

# OLNI's - Objetos Lunares No Identificados

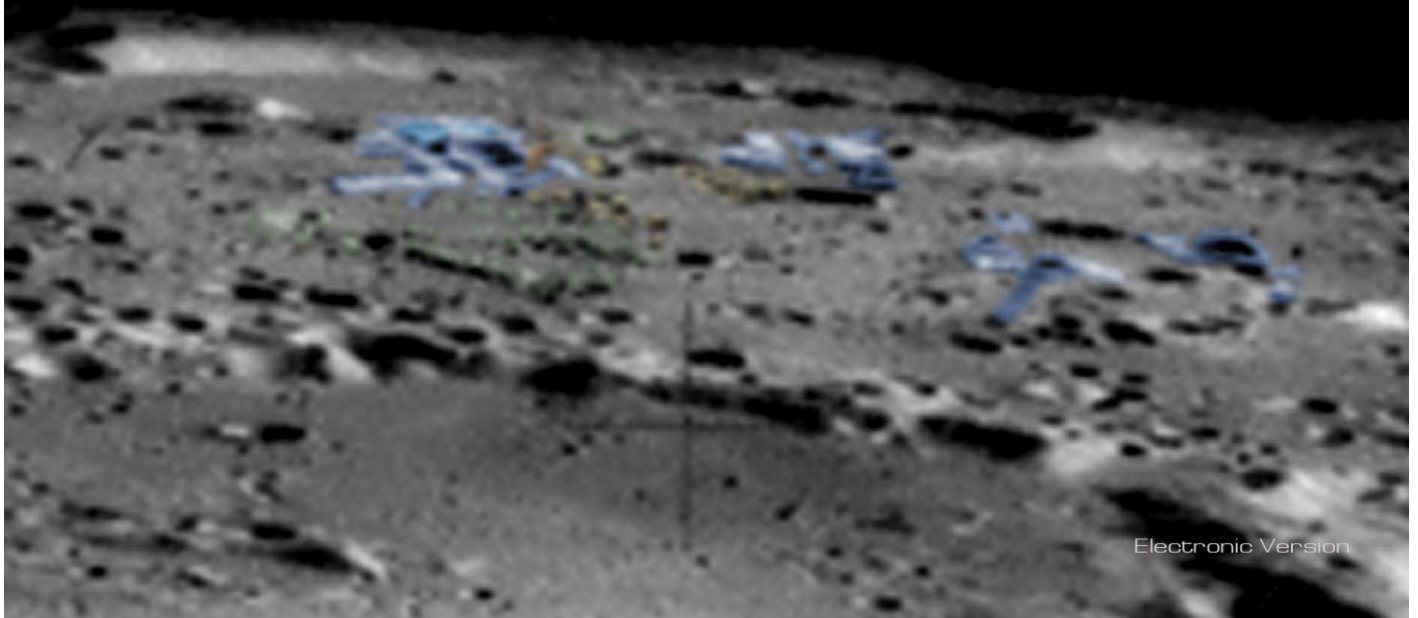
## Revelados en fotografias de la NASA por el comandante Gregory J. Smith

Ediccion limitada en 2009 en alta resolucion y en E-book, del libro impreso con titulo original: "ULOs - Unidentified Lunar Objects Revealed in NASA Photography" publicado por Allan Sturm en el 2008, compuesto por mas de 390 imagenes mostradas por el "Canal SyFy" en su programa especial titulado " Aliens en la Luna: La verdad revelada", que fue emitido por vez primera en Domingo, 20 de Julio del 2014. **La ediccion impresa del libro ya no se encuentra disponible en el mercado.**

# OLNI's

Objetos Lunares No Identificados revelados en fotografias de la NASA

por Allan Sturm



# OLNIs

Objetos Lunares No Identificados revelados en fotografías de la NASA

por Allan Sturm



## PUBLISHER'S NOTE

This is not a photocopy of the original book. Due to publishing software differences, this electronic version of the first print edition of ULOs is different in appearance. Some images have been moved or resized. Printing has been disabled.

## COPYRIGHT NOTICE

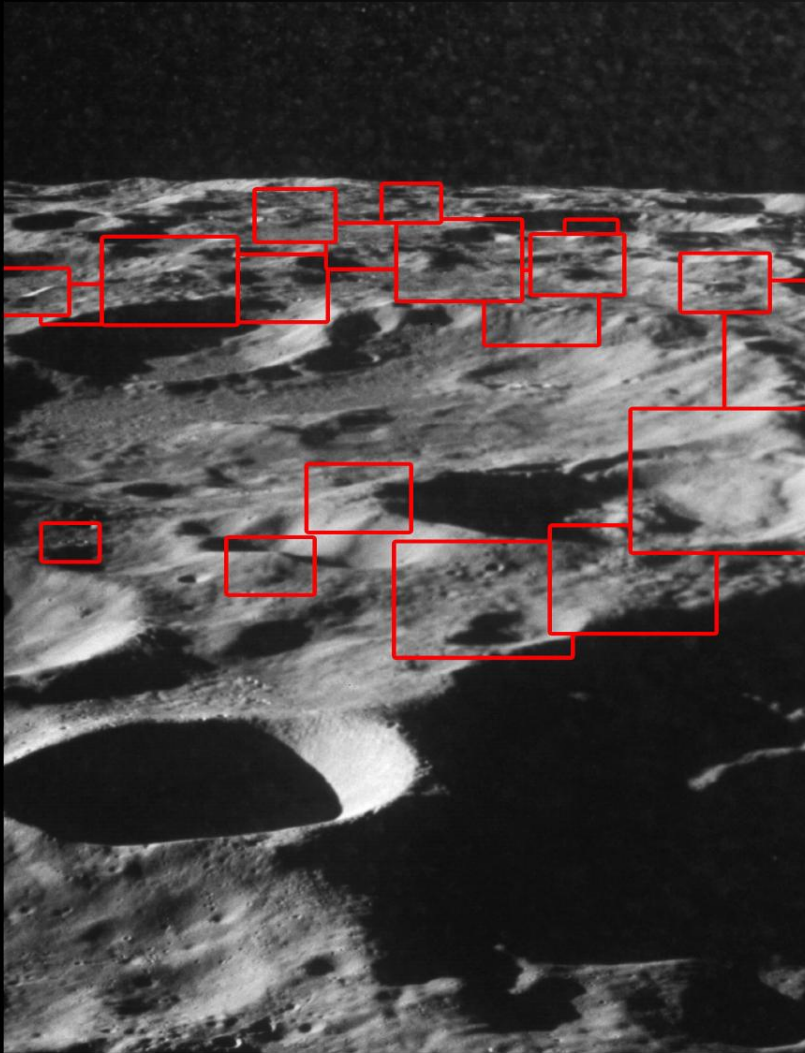
This electronic publication copyright © 2008, Lunomaly Research Group, LLC. All rights reserved. All images of the Moon used for analysis and interpretation in this publication are courtesy of the National Aeronautics and Space Administration (NASA), are subject to copyright terms as described online at [nasa.gov](http://nasa.gov) (dated 10/13/05) and were acquired from NASA, through their affiliated or authorized organizations or from private archives.

First Electronic Edition (05.01.08-E.01)



Lunomaly Research Group, LLC

Introduccion	6
Observacion Lunar	7
Cambio de enfoque	8
Una aguja en un pajar	11
Objetos Lunares no identificados	12
Estructuras humanas	14
Apollo 08	16
Apollo 10	46
Apollo 11	52
Apollo 12	58
Apollo 15	70
Apollo 17	82
Bibliografia	121



## INTRODUCCION

Fue una guía en los mares, la musa de poetas y compositores. El único objeto en el cielo nocturno, clara y detalladamente visible sin la necesidad de un telescopio. La Luna, tal como la conozco ahora, es un lugar intrigante y misterioso.

Lo que empecé como una simple revisión y búsqueda de fotografías raras y poco comunes para un libro, tomadas por las misiones Apollo, se volvió en algo que nunca espere. Se volvió en una colección de objetos extraños que yo pase a llamar OLNIs.

**Los OLNIs son Objetos Lunares No Identificados- Objetos con formas anómalas y al parecer, de carácter artificial esparcidos sobre la superficie lunar y que no se pueden identificar con ningún objeto producto de los procesos geológicos conocidos.**

Aclarados e iluminados digitalmente, los OLNIs de esta colección parecen torres o piezas de algo, cúpulas, estructuras geométricas complejas, caminos que van hacia o vienen desde enjambre de objetos, tuberías o redes de tuberías, objetos con formas de ruedas o estructuras que recuerdan los zigurats con sus anexos, y todos estos objetos citados solo por nombrar algunos.

Son todos ellos estructuras u objetos artificiales sobre la superficie Lunar? La respuesta de esto está en nuestro patio trasero. Y para poder dar algo por sentado habrá que volver a la superficie lunar y comprobarlo por nosotros mismos. Yo ya empecé este camino, pero permítanme empezar desde el principio...

## OBSERVACION LUNAR

Fui diseñador WEB por muchos años , y naturalmente mi búsqueda de imagenes empezo en Internet, de fuentes que ofrecian imagene raras y en alta resolucion de las misiones Apollo.

Enseguida descubri que existian, literalmente, decenas de miles de fotografias de la Luna tomadas por NASA pero que la mayoría de ellas no se ofrecian en alta resolucion.

Mi intencion era de incluir en el libro una buena cantidad de ellas asi que tuve que contactar con algunos de los bancos de archivos de imagen oficiales de la NASA, asi como con otros coleccionistas privados, como Keith Laney webmaster de la web [www.KeithLaney.net](http://www.KeithLaney.net) . El Lunar and Planetary Institute (LPI) es uno de los archivos oficiales en cual enorme base de datos empeze a indagar en busca de fotografias raras o poco comunes.

**Astronautas saludando la bandera, fotografias manchadas o de una exposicion poco clara, pero con unas fantasticas vistas . Habia de todo ahi.**

Con 16 años de experiencia en diseño grafico y fotografia pense en dar a estas imagenes una nueva vida.

Aumentando y navegando por las que estaban en alta resolucion empeze a observar cosas que no podría explicar. Exagonos con formas perfectas, formaciones de lineas rectas serca de los crateres

que acababan en un cruce, o extrañas formaciones rocosas en fotos de exposicion sercana, que parecian mas bien construciones artificiales que algo formado por la naturaleza.

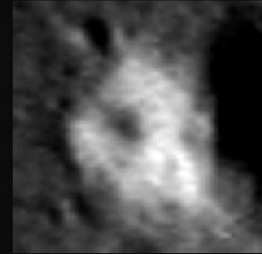
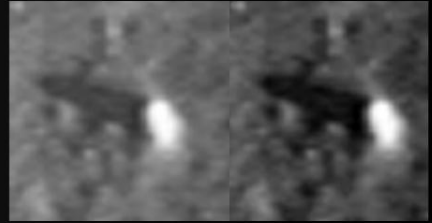
Despues de algnas pezquisas en internet y un par de libros leidos sobre geologia lunar no pude encontrar ninguna explicacion cientifica que me illumine lo suficiente sobre el caracter de estos ojetos extraños. Nadie, ni siquiera los conspiranoicos habian mencionado nunca lo que yo estaba viendo.

Estaba o no estaba yo observando evidencias de estructuras artificiales en la Luna?

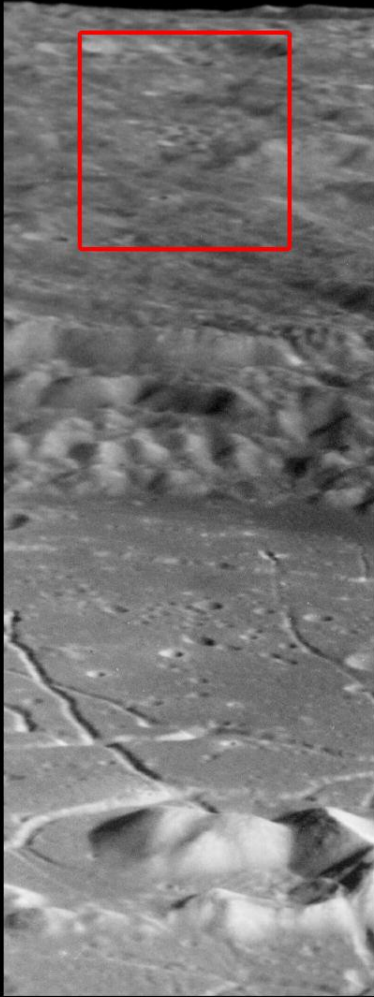
**My curiosidad hizo que siguiera buscando en internet mas exemplos similares o ver lo que otros decian haber descubierto.**

Entre la cantidad de paginas mostrando posibles anomalias lunares, navegue en la web de Glenn Steckling [www.gafintl-adamski.com](http://www.gafintl-adamski.com) que hacia una promocion del libro de edicion revisada de su padre "We Discovered Alien Bases On The Moon" , publicado en 1981.

Increible! 1981 fue mi segundo año en la universidad , vendia ordenadores en mis ratos libres y ahi estaba el bueno de Fred - padre de Glenn, haciendo un estudio profundo y diciendo que cualquiera que tenga tiempo para analizar podría ancontrar estructuras artificiales u otros signos de actividad inteligente en la Luna!



## CAMBIO DE ENFOQUE



Contacte con Glenn con la esperanza de que aceptara una conversacion en directo en my isla virtual en "Second Life" y nuestra charla rapidamente tomo otra direccion y empeze a comentarle todo lo que habia descubierto.

Hasta este punto, yo solo habia visto extrañas formas y probablemente algun que otro juego de sombras, pero Glenn era paciente con mi entusiasmo y me aconsejo que siga buscando más. Glenn estaba convencido en lo que decia y el no era el unico. Su libro era una exelente fuente de informacion, que me animaba a buscar mas profundamente!

Y sucedio que tras un par de conversaciones inspiradoras con Glenn y una docena de objetos y formas extrañas encontradas poco mas tarde, decidi cambiar el enfoque y en vez de que sea un fotolibro, opte por mostrar las anomalias Lunares que yo habia descubierto.

**Tuve que ver las cosas desde otra perspectiva, la que podria darme la oportunidad de encontrar algo que posiblemente haya pasado desapercibido por tres decadas, así que me centre en las imagenes Hasselband de formato medio y las de 35mm Nikon**

Viendo un video en youtube sobre el tema (ver Disclosure Project) vi afirmaciones de gente que denunciaba que muchos de los objetos extraños habian sido borrados de las fotos de las misiones Apollo.

Tras mi paso por la escuela de artes graphicas yo ya daba por hecho de que si en verdad hubo un borrado intencionado, no serviria de mucho buscar o indagar en el archivo fotografico de la mision Lunar Orbiter.

Las fotos se habian tomado casi en perpendicular y con mucho aumento, asi que si alguien quisiera, nada le impediria borrar cualquier cosa extraña que apareciese en ellas. Y quien notaria la diferencia? Nadie puede ver estos objetos, ni con los telescopios mas potentes, desde la Tierra!

Por suerte un gran numero de imagenes en formato medio y de 35mm fueron tomadas en un angulo obliquo y a menudo con vistas del horizonte. Por lo tanto resultaria extremadamente dificil hacer un retoque en algun area en particular y en especial existiendo otra imagen del mismo lugar pero tomada con un angulo distinto y que no se notase la manipulacion!

Mas objetos aparecieron ante mi, muchos mas que antes y si habia multiples imagenes tomadas en distintos angulos, era facil para mi determinar comparando las si los objetos eran o no una illusion optica, (podria ser un resultado de interpretacion de las luces y sombras de una mente creativa por ej.) o si de verdad se trataba de objetos tridimensionales.

**Llegados a este punto me sente y observando estas increíbles fotos en alta resolucion me percate que en la Luna no existia una atmosphaera como la que tenemos en la Tierra.**

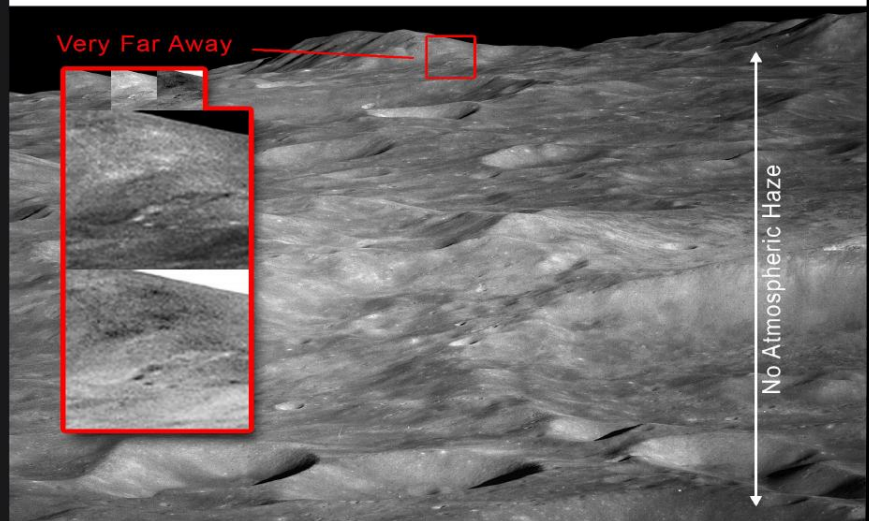
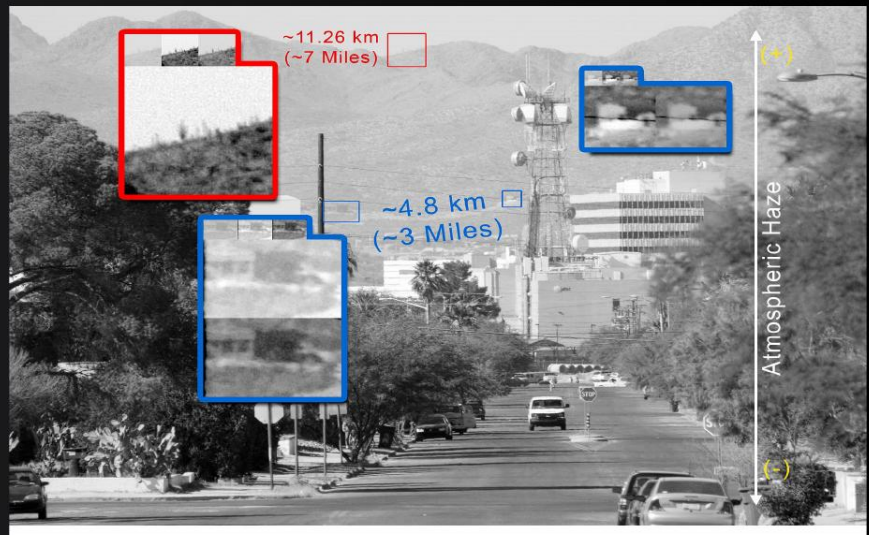


En la Tierra, los objetos lejanos tienden a perder su color y definicion como resultado de la interaccion de la luz que intenta hacerse paso entre las particulas del aire y la atmosfera- Efecto conocido como Neblina Atmosferica. Al carecer de atmosfera y por lo tanto de Neblina Atmosferica en la Luna los unicos defectos en las fotos en angulo obliquo podrian ser (exceptuando algun reflejo producido por la lente, movimiento de la camara, una exposicion incorrecta etc.) producidos por el grano de la pelicula que oscureceria los detalles cerca de linea del horizonte. Un ejemplo parecido puede facilmente comprobarse con una camara digital.

Tomando una foto digital con escasa resolusion en megapixeles y enfocando hacia el fondo de la calle, que esta llena de carteles, en algun punto lejano nosotros no somos capaces de leer las letras. Simplemente andamos escasos de pixeles para poder recrear las letras en esta resolusion.

En contraste a esto, la camara Hasselband usada en las misiones Apollo tenia un increible instrumental optico y urilizando una pelicula de formato medio, conseguia una resolusion equivalente a las camaras digitales de hoy dia de ~25 megapixeles.

Cuanto mas resolusion hay en un area fotografiada, mas detalle . Y esto es bueno, teniendo en cuenta que la mayoria de imagenes presentes en este libro se han tomado de entre 80 y 114 km de distancia.



## CAMBIO DE ENFOQUE

Again, no atmospheric haze, good lenses and high quality film should equal spectacular detail except for objects obscured by the film grain that are too small and far away.

But wait! I'm not standing in the darkroom making prints. I'm looking at these images on my computer.

The digital versions of these photos came in two forms: compressed and un-compressed. Compression schemes like JPEG are fine for emailing your smiley pictures to friends and family, but aren't good for details in photography.

Basically, JPEG'ing clumps up neighboring pixel colors that are similar, creating larger and larger blocks until you are either satisfied with the new file size or you can still identify the details - whichever is more important.

**Given a quality photo and scan, the detail from a medium format positive should be jumping out like Ansel Adams himself had taken the photograph.**

This whole process is further complicated by the quality of the scanning device, it's software, and operator skill. For the most part, the digital images I was receiving from LPI and others were of reasonable high quality and some were not.

Recordemos: Ausencia de neblina atmosférica, buen material óptico y película de alta calidad es igual a detalles excepcionales, excepto en los objetos oscurecidos por el grano de película, que son pequeño y muy lejanos.

Pero un momento Yo no estoy sentando en un laboratorio revelando carretes! Estoy inspeccionando estas fotos en mi ordenador.

La version digital de estas fotos esta disponible en dos formatos distintos: comprimido y no comprimido. La compresion tipo JPEG va muy bien para enviar nuestras imagenes divertidas por email a familiares y amigos, pero no es adecuada para resaltar detalles.

Basicamente los JPEG

I personally found these photos to be some of the more provocative. The Moon takes on a whole different appearance on the far side and I wish that someone would take the time to re-scan the original Hasselblad film instead of redistributing copies of copies...

**Most people examining these photographs are lunar and planetary scientists, not alien structure hunters.**

Scientists and other researchers use these photos for all kinds of purposes to include counting and measuring craters and attempting to determine the age of the Moon - they aren't looking for alien bases, Nazi outposts, or secret pre-1970's Russian facilities.

The resolution (and effects of compression) in these digital versions are adequate for most scientific research, so I continued examining what was available and singling out suspicious artificial looking geometric shapes.

**Then I saw it...**

## THE NEEDLE IN THE HAYSTACK

It was two o'clock in the morning. I sat there with my jaw on the keyboard, staring at something that I couldn't imagine having been formed by 30,000 mph meteor impacts in a low gravity environment. I stepped outside to get some air and wondered if the Men in Black were going to pull up. Thankfully they didn't, so I went back inside and stared some more at my "needle in the haystack".

A few enhancements later revealed even more detail. A series of spherical and concentric circular objects in the foreground and a collection of odd structural looking geometry behind them. I was shocked.

When my wife awoke that morning, I rushed her over to see what I had found. I excitedly pointed out how artificial and purposefully constructed it appeared against the surrounding rubble. In stark contrast to her previous lack of enthusiasm and dutiful patience, she too dropped her jaw.

**Once my eyes had tuned into the structural design of the "needle in the haystack", I could then see a whole new set of "alien" architecture in other Apollo photos.**

I didn't want to be chasing a ghost, so I began politely requesting better versions and custom scans while continuing to build

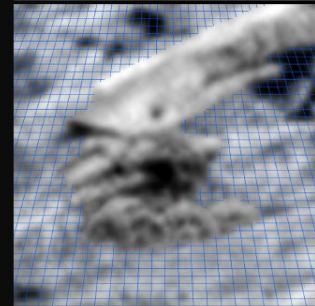
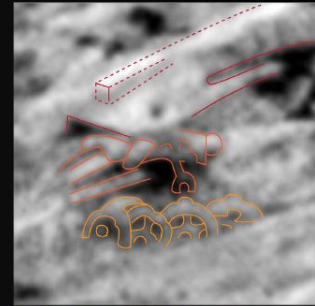
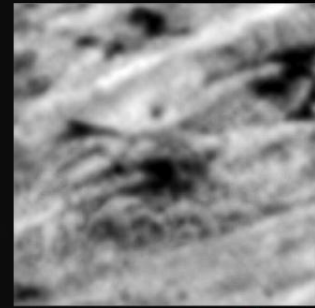
my archive of... of... just what can I call these things? They certainly look artificial to me, but I can't go up there and poke them with my finger.

I decided to call them "objects of interest" which, as it turned out, made it a lot easier for friends and family to openly discuss what they just might be. I also began posting some of these objects online in a dedicated blog and on other social media websites. People from all over the world found my research through search engines and some contacted me personally to discuss my findings. The widespread interest further motivated me to continue my research.

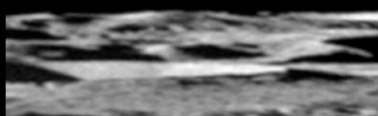
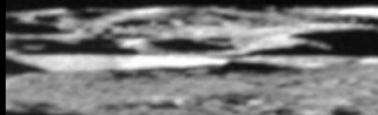
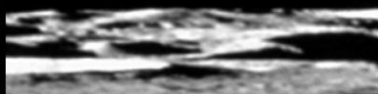
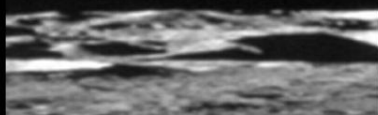
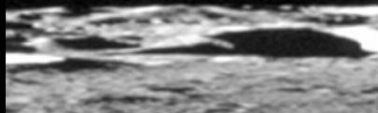
**Fast forward a few months and a couple hundred of these "objects of interest" later and I decided to call them ULOs.**

I define ULOs as anomalous shapes that appear artificial to the Moon's landscape and resist identification as known lunar geological features.

It would be irresponsible to describe these objects as alien bases, crashed starships or giant Tupperware containers because we can't resolve that level of detail in these photos and we certainly can't take a casual stroll on the surface of the Moon to see for ourselves.



## UNIDENTIFIED LUNAR OBJECTS



I have found literally hundreds of ULOs with some appearing as towers or spires, domes near terraced vertical walls, stacked geometry with spheres sitting on top, pathways leading to and from objects, clusters of objects resembling industrial operations, highlights forming geometric patterns, pipes and pipe grids intertwined or wrapping over each other, wheel-shaped objects with support arms, and ziggurat looking structures with annexes just to name a few.

The main photos presented here are in chronological order by Apollo mission. Not every mission made the cut for this publication. Within each main photo's section are various contrast-enhanced enlargements of a single or group of ULOs with both a colored and uncolored version. The colored versions will assist you in seeing some of the ULOs that I have found.

**In most of these enlargements, the bottom of the image is nearer to you than the top, just like a landscape photo taken here on Earth.**

If the ULO or group of ULOs being enlarged is near the horizon on the main photo, then the resolution is very low and moving your eye around within the image is like traveling quickly over a very large distance.

With this scale in mind, you can better visualize what it would be like if you were on the lunar surface, walking around and experiencing the ULOs in their setting.

### **What are these odd, dusty looking objects that appear geometric and artificial?**

Well, I'm not claiming that without a doubt, lunar mining operations or alien base camps exist on the Moon. If you see a collection of stacked squares in the middle of a valley with a sphere on top and small paths leading away to other geometric shapes, what appears to be a complex of built structures to you and I could very well be the result of lunar geological forces or meteor impacts yet to be scientifically explained.

In the future, the Lunomaly Research Group will work with other professionals, researchers and scientists from around the world to analyze these ULOs in greater detail. Taking an objective view on the whole topic, we'll attempt to categorize each ULO by describing in architectural and engineering terms its structural design and scale.

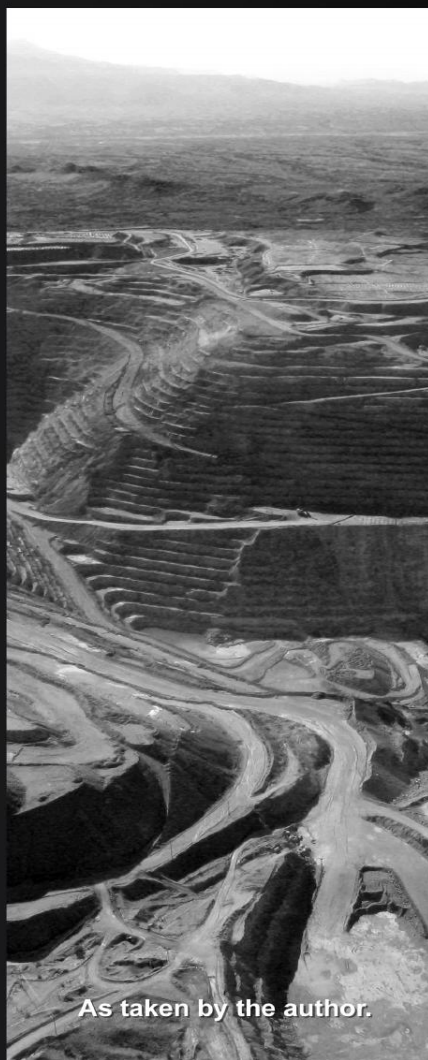
We'll also take into account the latest information available on lunar geology to determine, as best we can, if a particular ULO remains an anomaly or can be explained as a natural occurrence.

My hope is that the ULOs presented in this book will stimulate conversation and debate in public and academic circles. Should the research presented here pique your interest enough to start looking for yourself, you should use the ULO acronym in your emails, websites and videos.

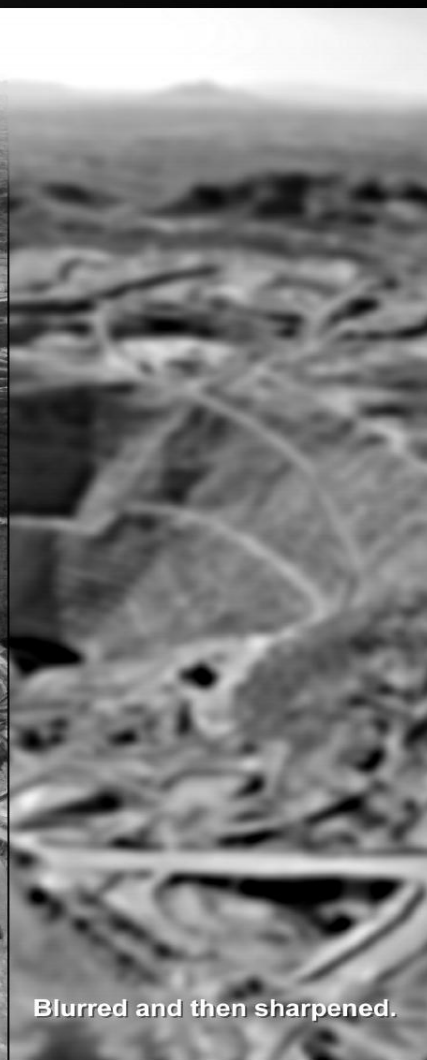
**Once adopted, a simple Internet search term of “ULO” or “ULOs” will return every-one’s research and opinion on the topic.**

In light of the revived interest in returning to the lunar surface (after 30 plus years of indifference); worldwide sharing of digital photos and video footage of numerous new UFO sightings; recent disclosures by experts, government and retired military personnel claiming first hand accounts of contact; growing public acceptance that we are not alone; and multitudes of ULOs found by myself and others, I believe that returning to what was once considered a desolate rock in the sky and meaningful to only a few, just may in fact be the stepping stone to our future among the stars.

*Right: Photo of an open pit mine in Southern Arizona.*



As taken by the author.



Blurred and then sharpened.

HUMAN STRUCTURES - ANCIENT



Ancient Ziggurat, Iraq



Pyramid of the Moon, Mexico



Chaco Canyon, USA



Pachacamac, Peru



Machu Picchu, Peru



Chaco Canyon, USA

# HUMAN STRUCTURES - MODERN



Kimberlite Diamond Mine, Namibia



Open pit mining, USA



Kennedy Space Center, USA



Biosphere 2, USA

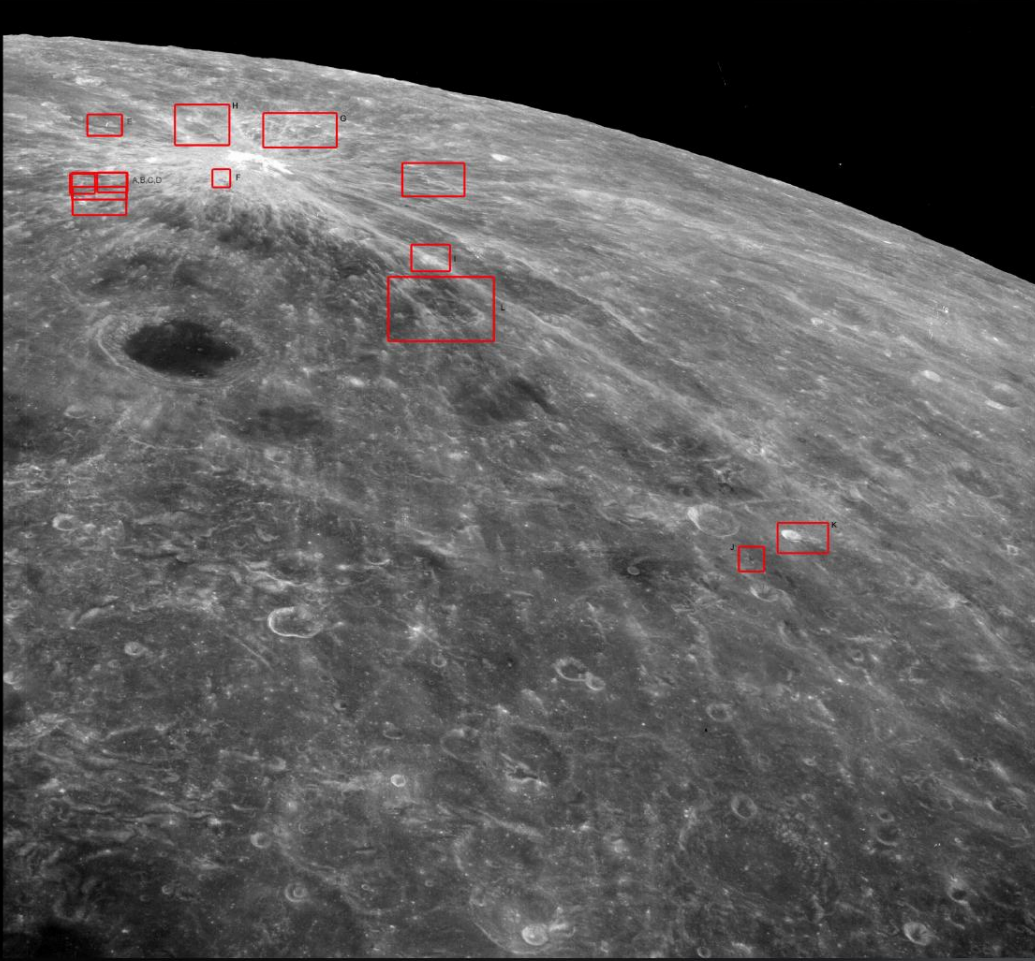


Moon Palace, Mexico

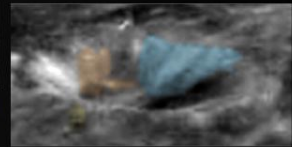
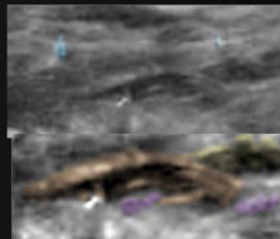
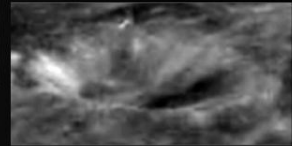
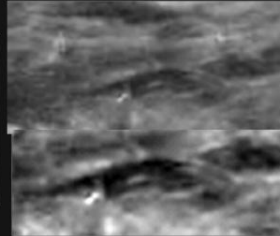


Baikonur Cosmodrome, Kazakhstan

AS08-12-2209





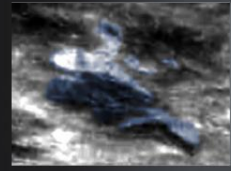
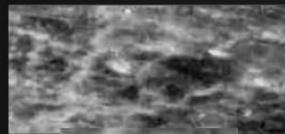
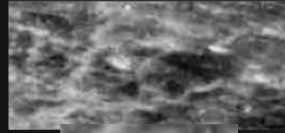
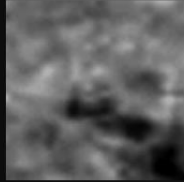


AS08-12-2209-A

AS08-12-2209-B

AS08-12-2209-C

AS08-12-2209-D



AS08-12-2209-E

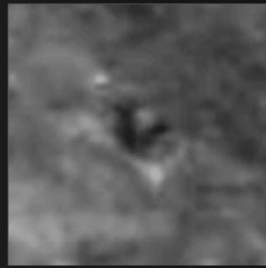
AS08-12-2209-F

AS08-12-2209-G

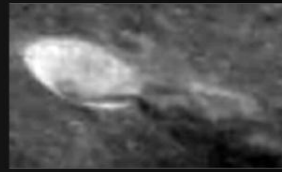
AS08-12-2209-H



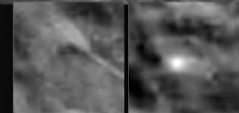
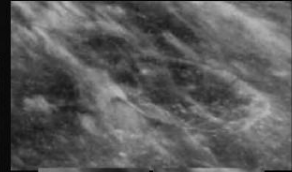
AS08-00-0000



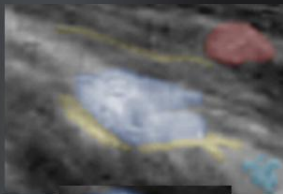
AS08-00-0000



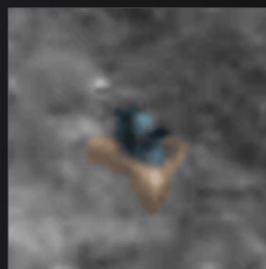
AS08-00-0000



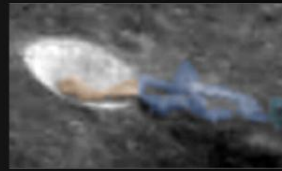
AS08-00-0000



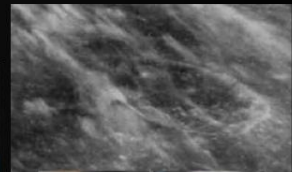
AS08-12-2209-I



AS08-12-2209-J

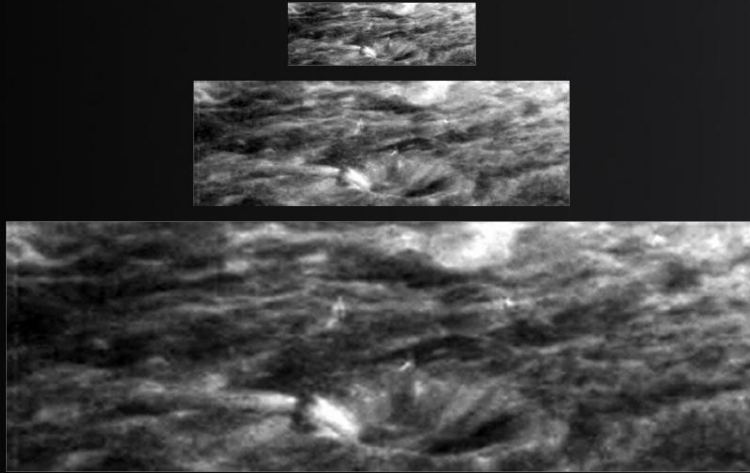


AS08-12-2209-K

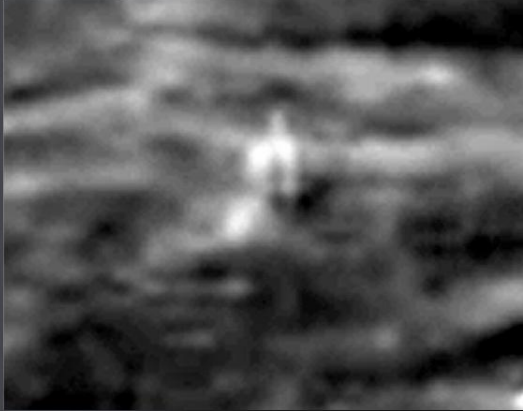


AS08-12-2209-L

AS08-12-2209

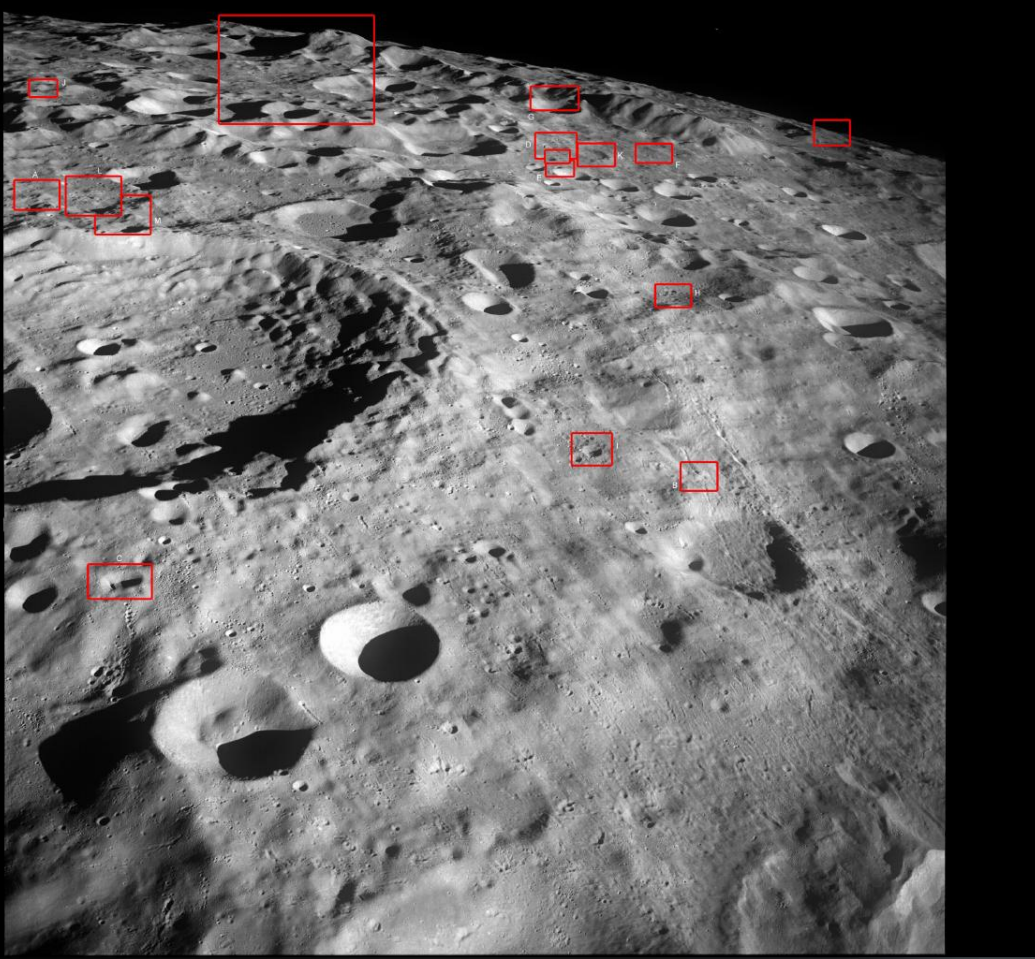


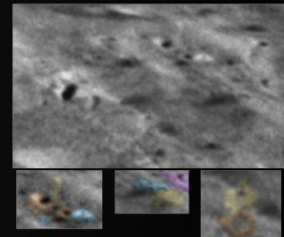
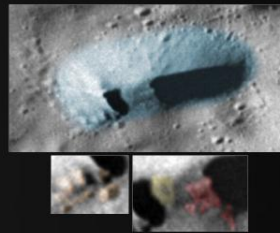
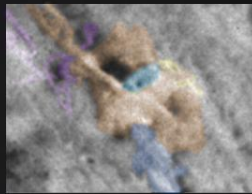
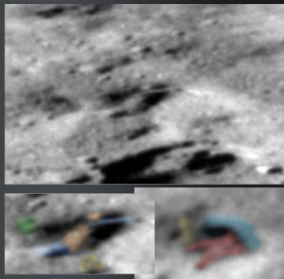
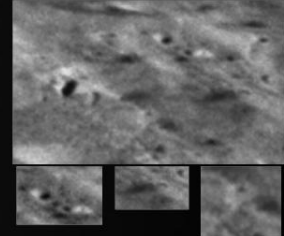
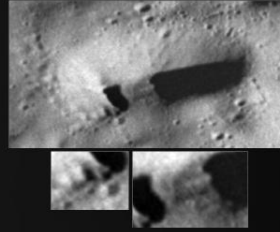
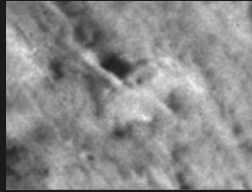
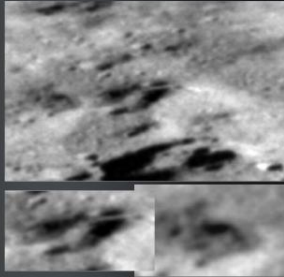
AS08-12-2209-A, B, C, D (AREA)



AS08-12-2209-A

AS08-13-2244



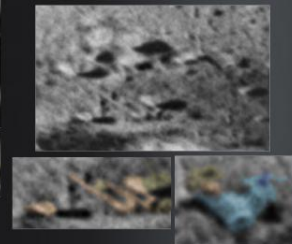
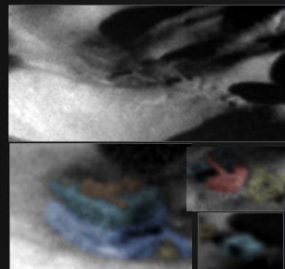
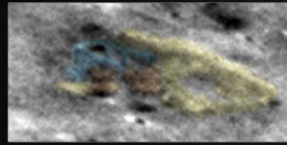
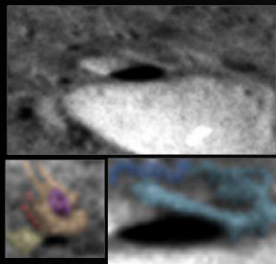
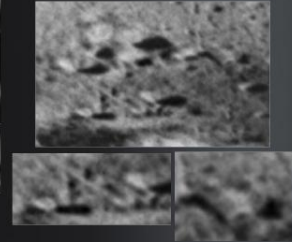
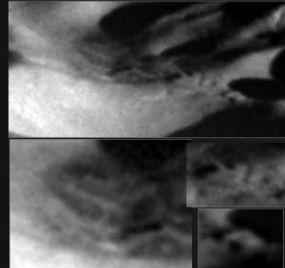
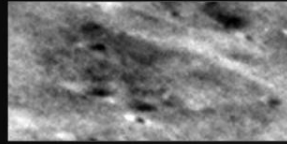
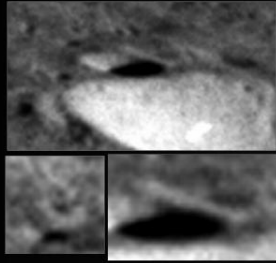


AS08-13-2244-A

AS08-13-2244-B

AS08-13-2244-C

AS08-13-2244-D



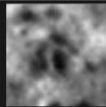
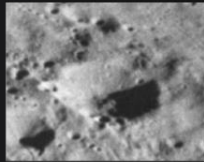
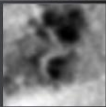
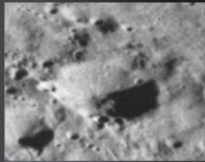
AS08-13-2244-E

AS08-13-2244-F

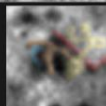
AS08-13-2244-G

AS08-13-2244-H

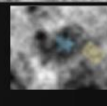




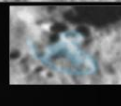
AS08-13-2244-11



AS08-13-2244-12

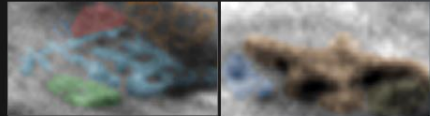
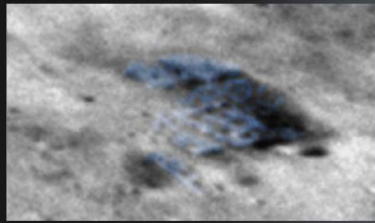
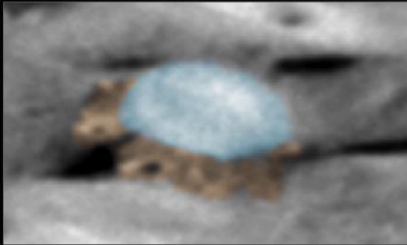
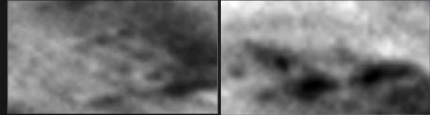
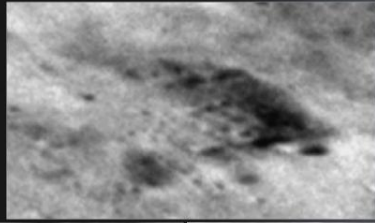
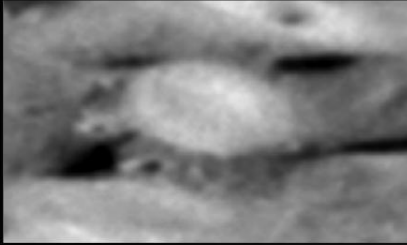


AS08-13-2244-13



AS08-13-2244-14

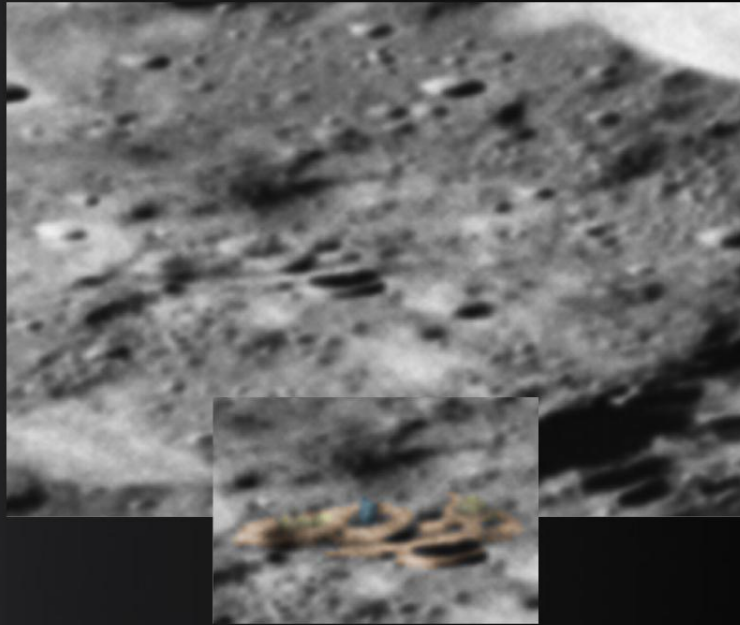
AS08-13-2244



AS08-13-2244-J

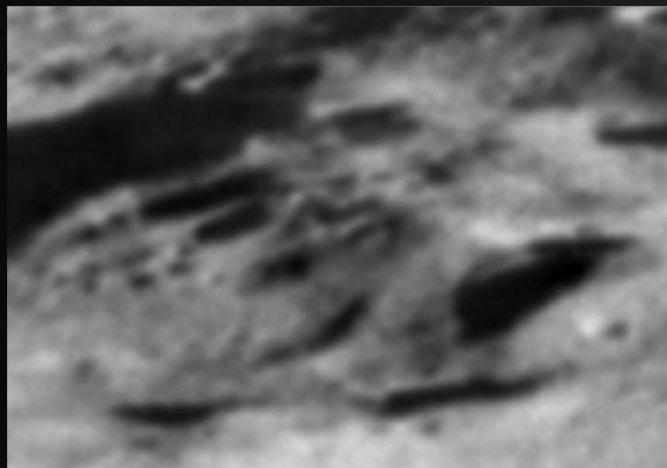
AS08-13-2244-K

AS08-13-2244

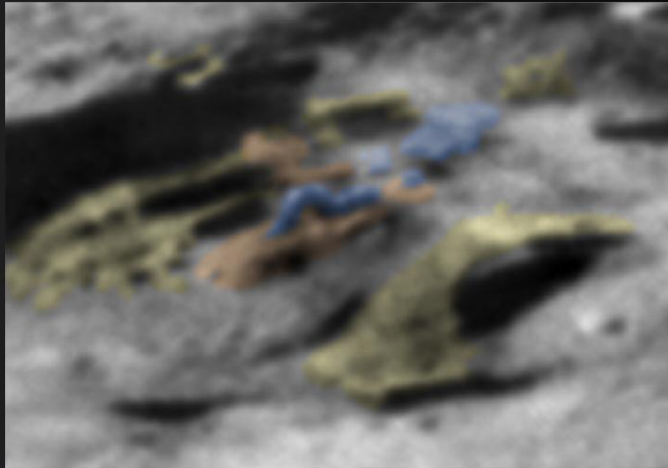


AS08-13-2244-L

AS08-13-2244

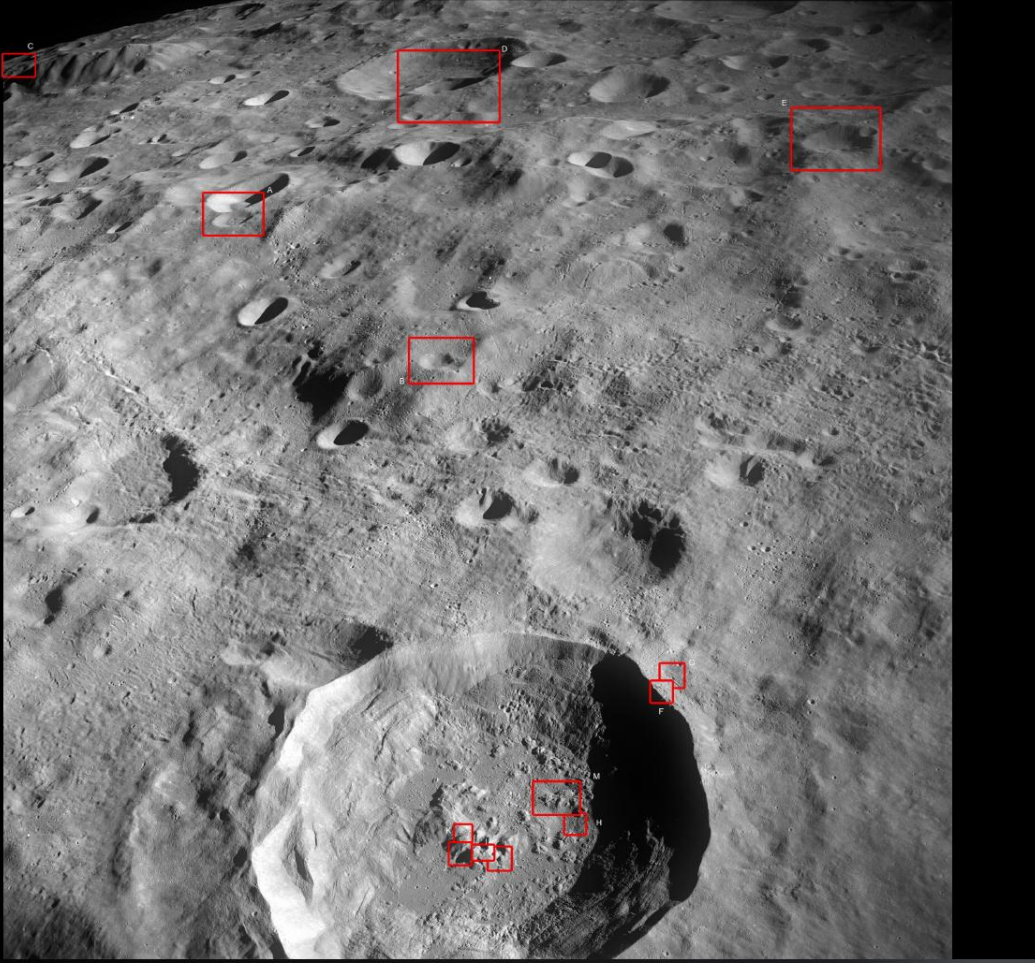


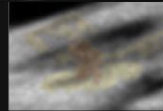
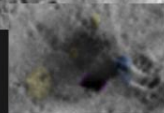
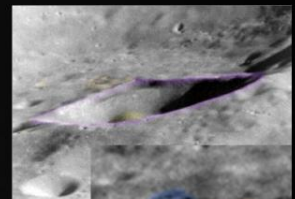
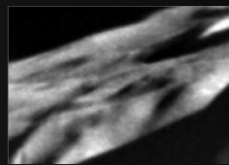
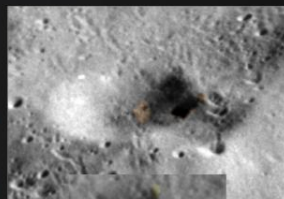
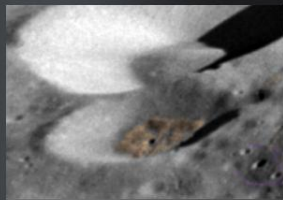
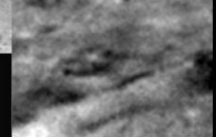
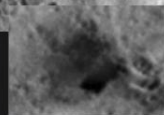
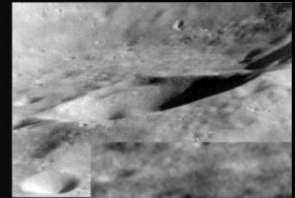
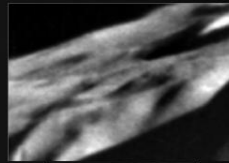
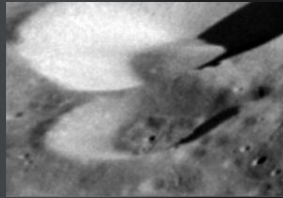
AS08-13-2244-M



AS08-13-2244-M

AS08-13-2246





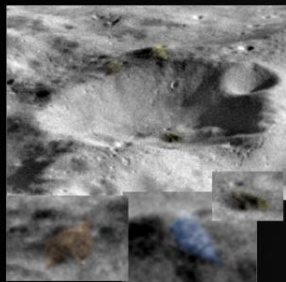
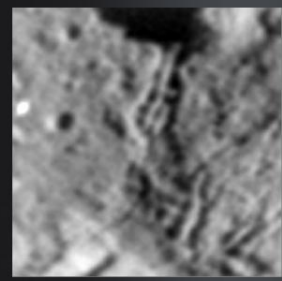
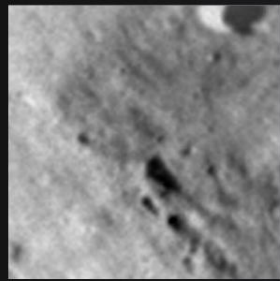
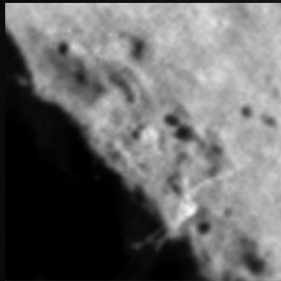
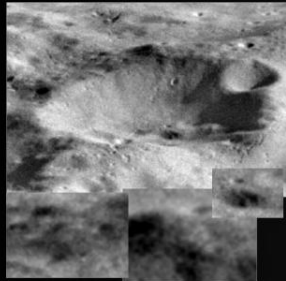
AS08-13-2246-A

AS08-13-2246-B

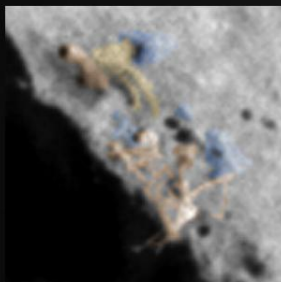
AS08-13-2246-C

AS08-13-2246-D

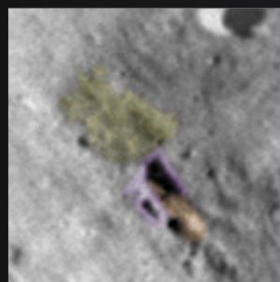
AS08-13-2246



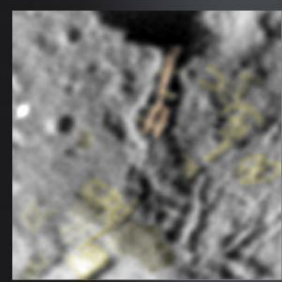
AS08-13-2246-E



AS08-13-2246-F

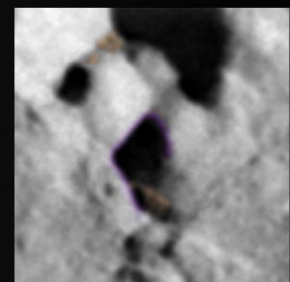
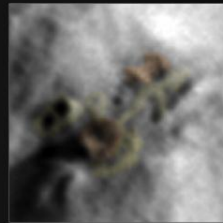
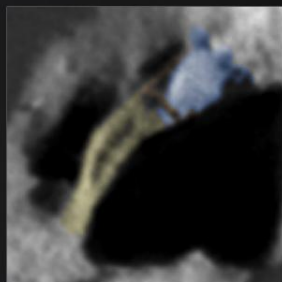
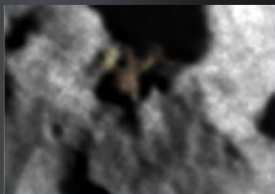
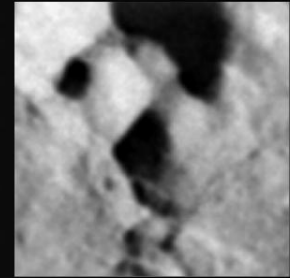
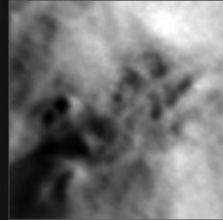
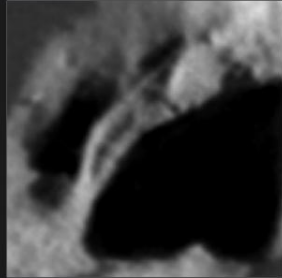
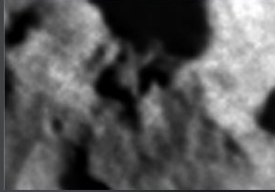


AS08-13-2246-G



AS08-13-2246-H





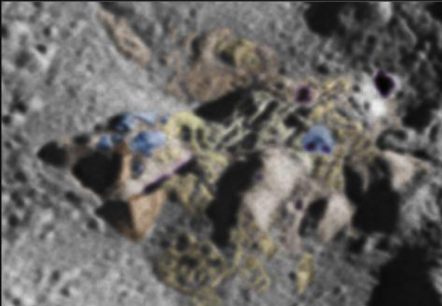
AS08-13-2246-I

AS08-13-2246-J

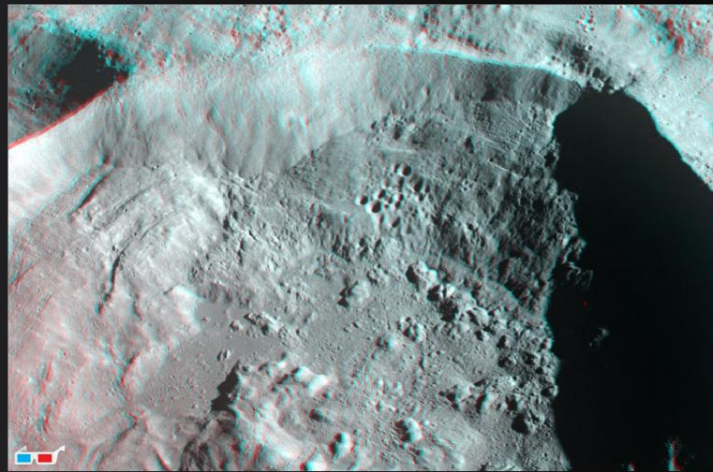
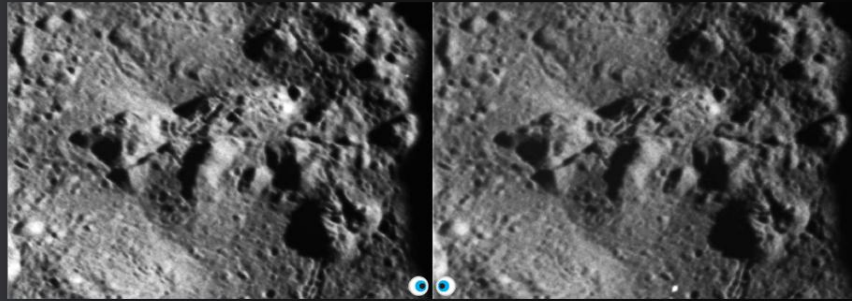
AS08-13-2246-K

AS08-13-2246-L

AS08-13-2246

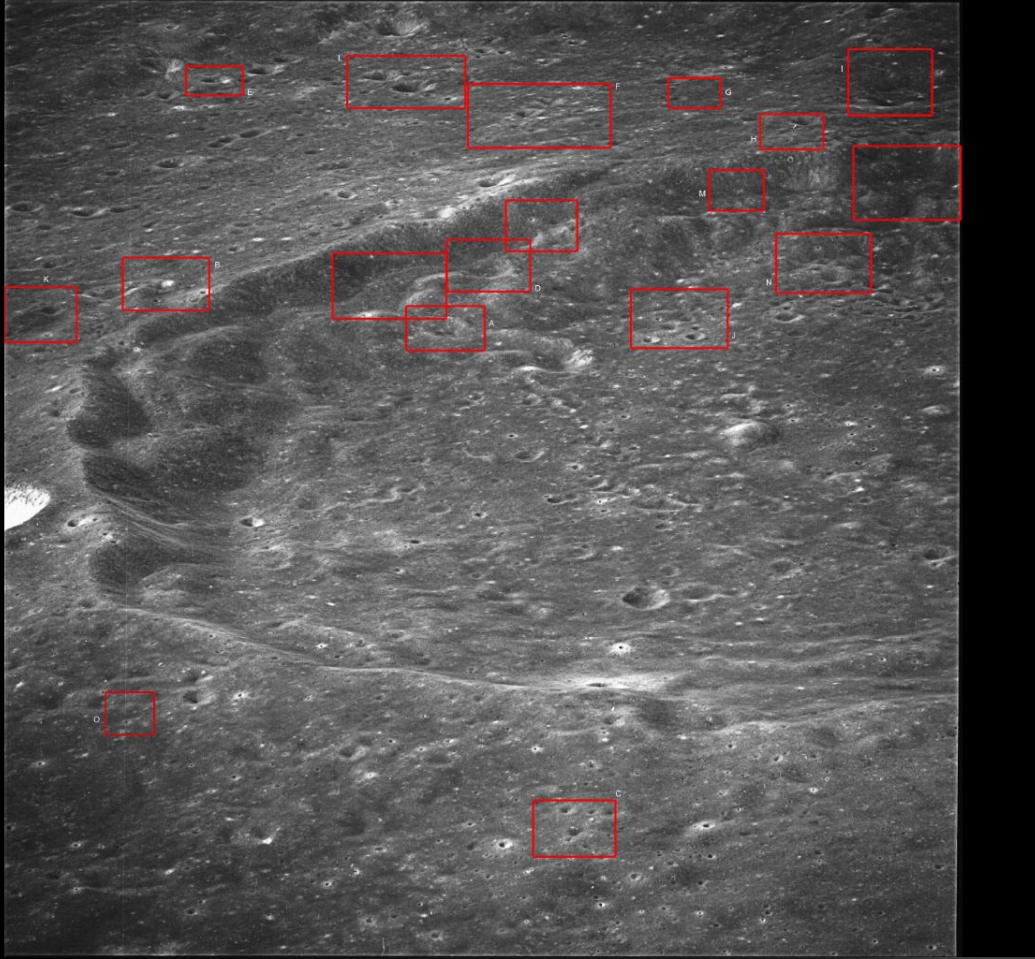


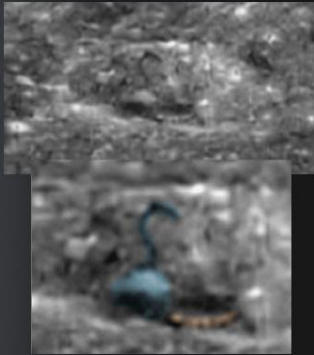
AS08-13-2246-M



AS08-13-2246-M (and AREA)

AS08-13-2267





AS08-13-2267-A



AS08-13-2267-B1



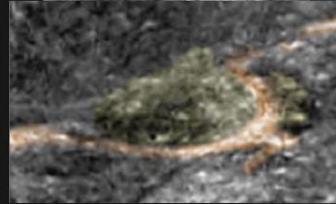
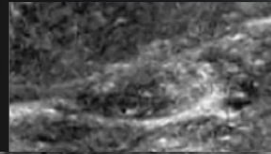
AS08-13-2267-B2



AS08-13-2267-B3



AS08-13-2267-C



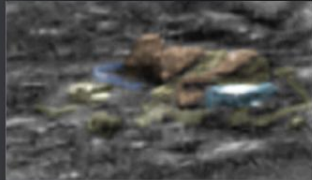
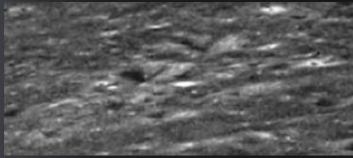
AS08-13-2267-D



AS08-13-2267-E1



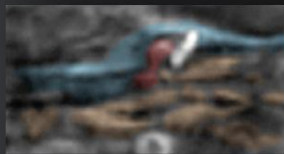
AS08-13-2267-E2



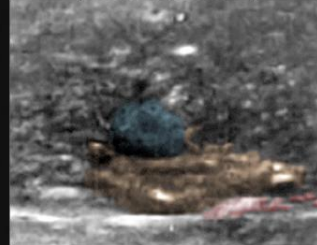
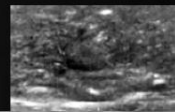
AS08-13-2267-F



AS08-13-2267-G



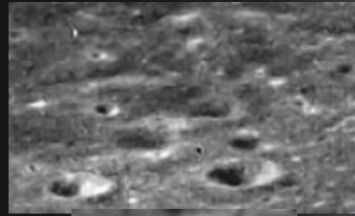
AS08-13-2267-H



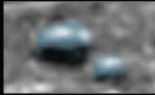
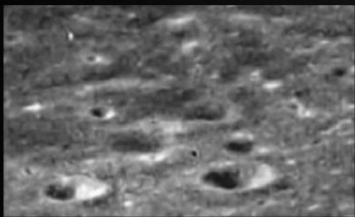
AS08-13-2267-I



AS08-13-2267-J1



AS08-13-2267-J2

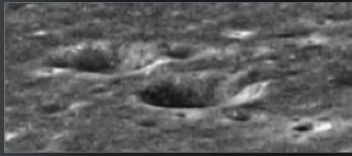


AS08-13-2267-J3

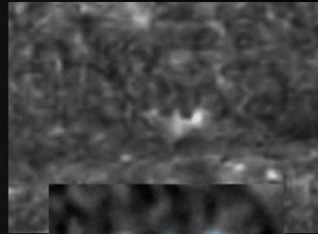


AS08-13-2267-K

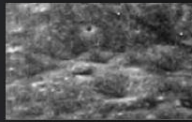




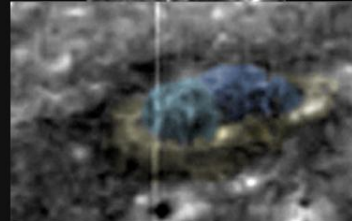
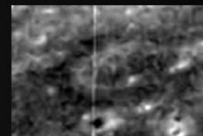
AS08-13-2267-L



AS08-13-2267-M

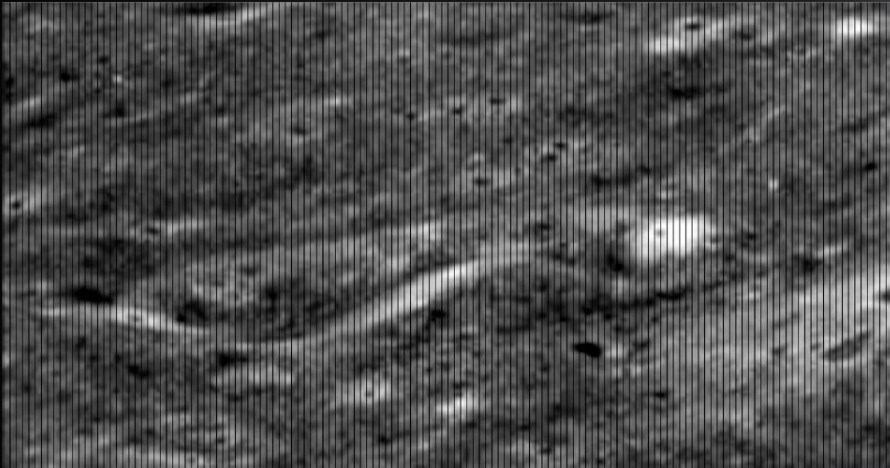


AS08-13-2267-N



AS08-13-2267-O

AS08-13-2267

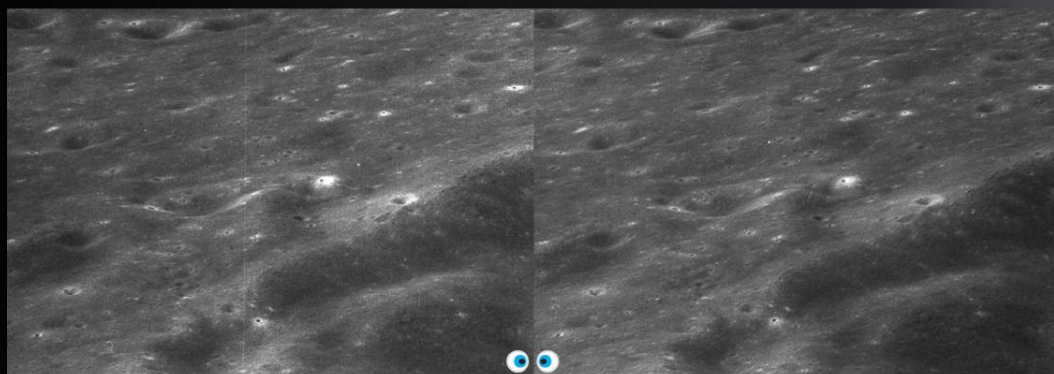


AS08-13-2267-B (AREA)

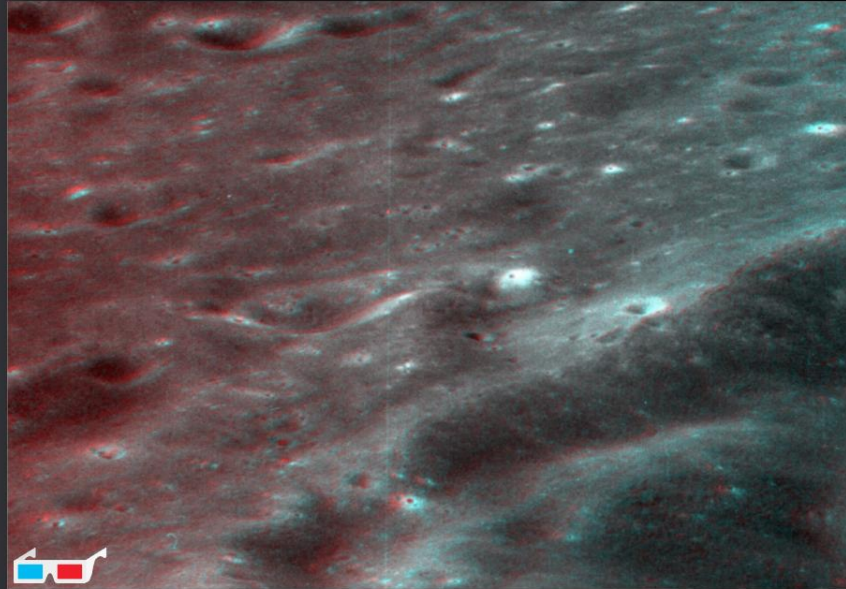


AS08-13-2267-B (AREA)

AS08-13-2267

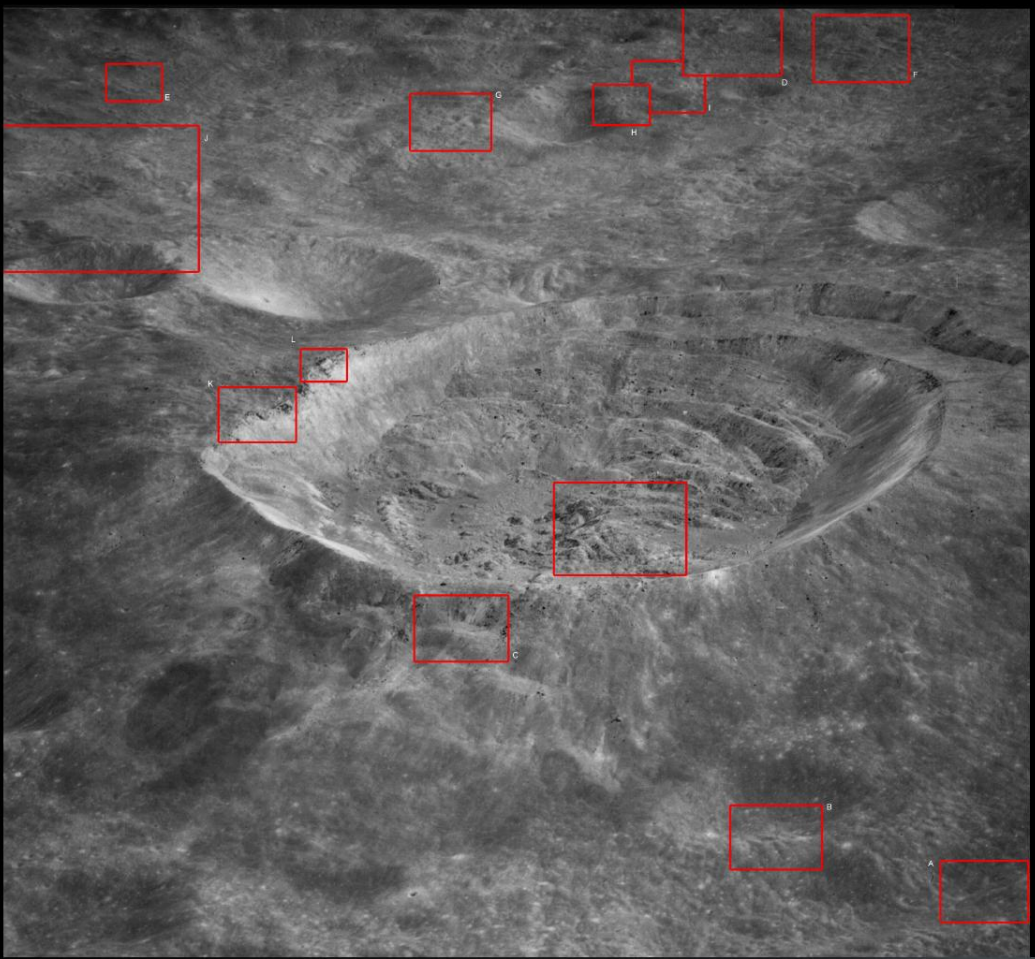


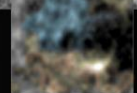
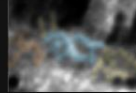
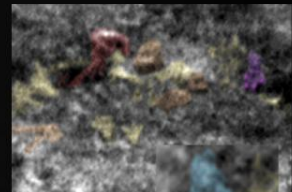
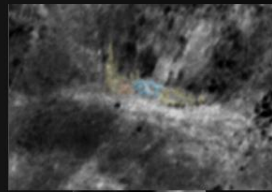
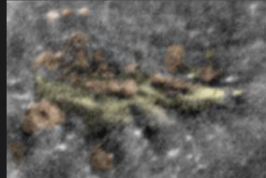
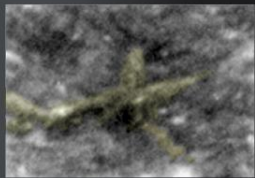
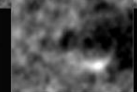
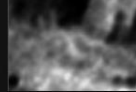
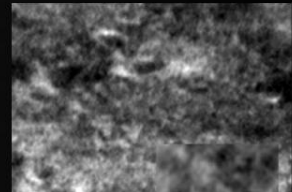
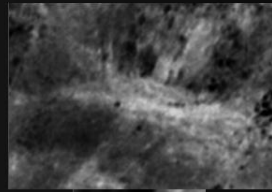
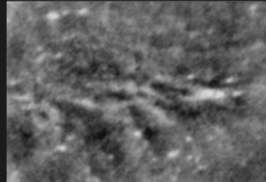
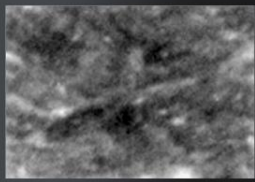
AS08-13-2267-B (AREA)



AS08-13-2267-B (AREA)

AS10-28-4012



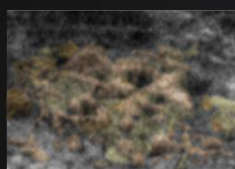
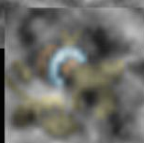
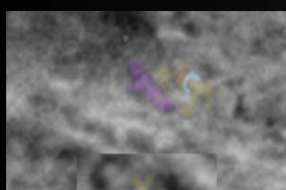
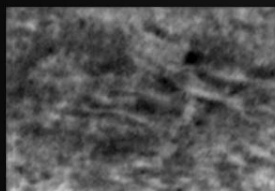
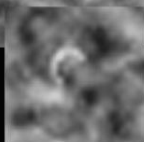
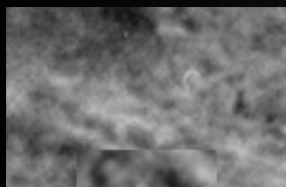


AS10-28-4012-A

AS10-28-4012-B

AS10-28-4012-C

AS10-28-4012-D



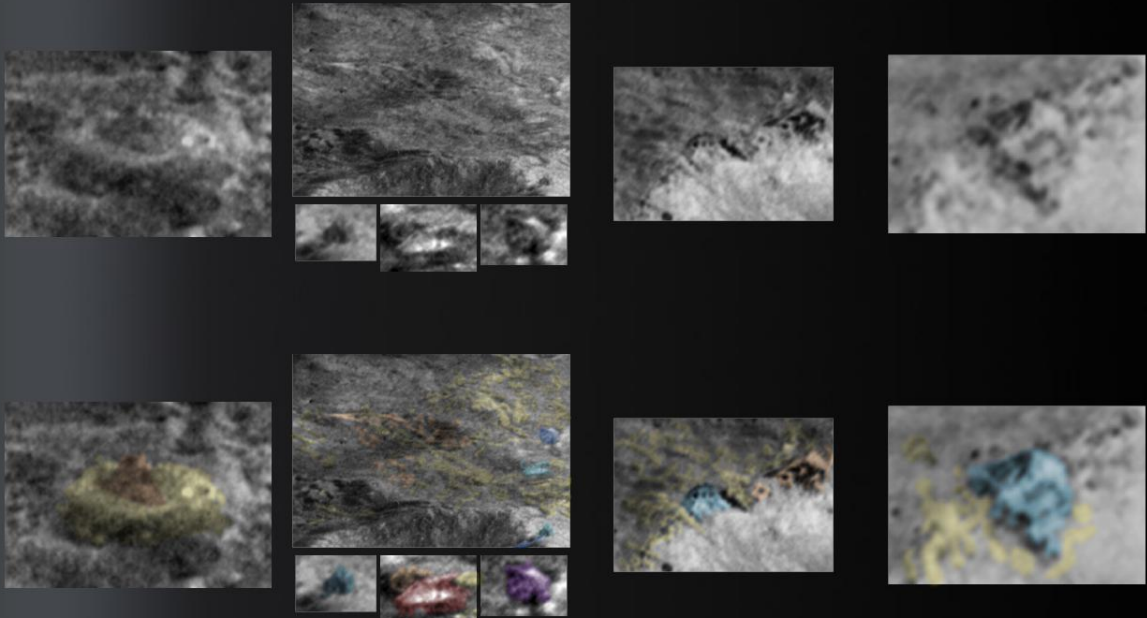
AS10-28-4012-E

AS10-28-4012-F

AS10-28-4012-G

AS10-28-4012-H



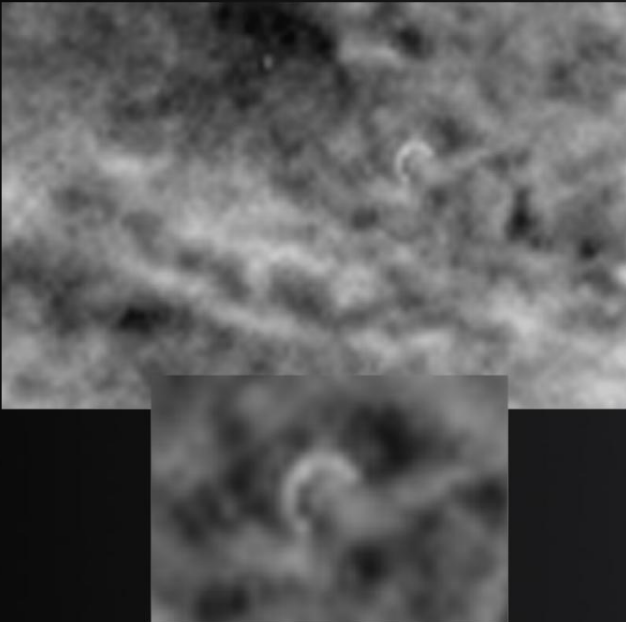


AS10-28-4012-I

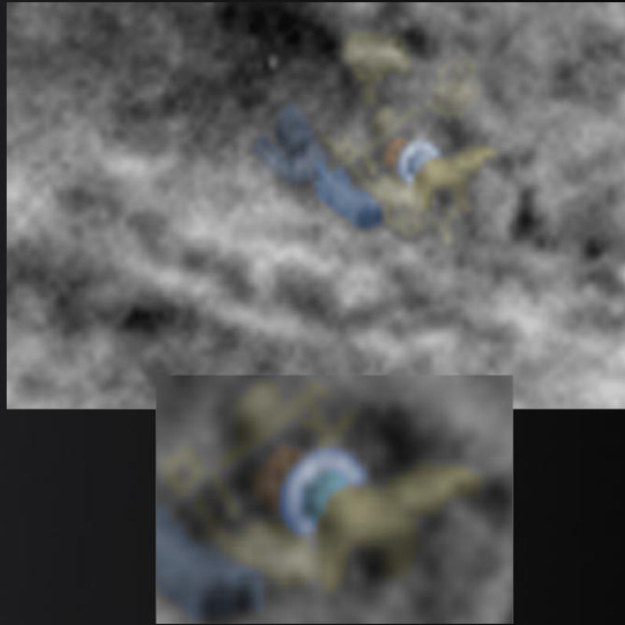
AS10-28-4012-J

AS10-28-4012-K

AS10-28-4012-L

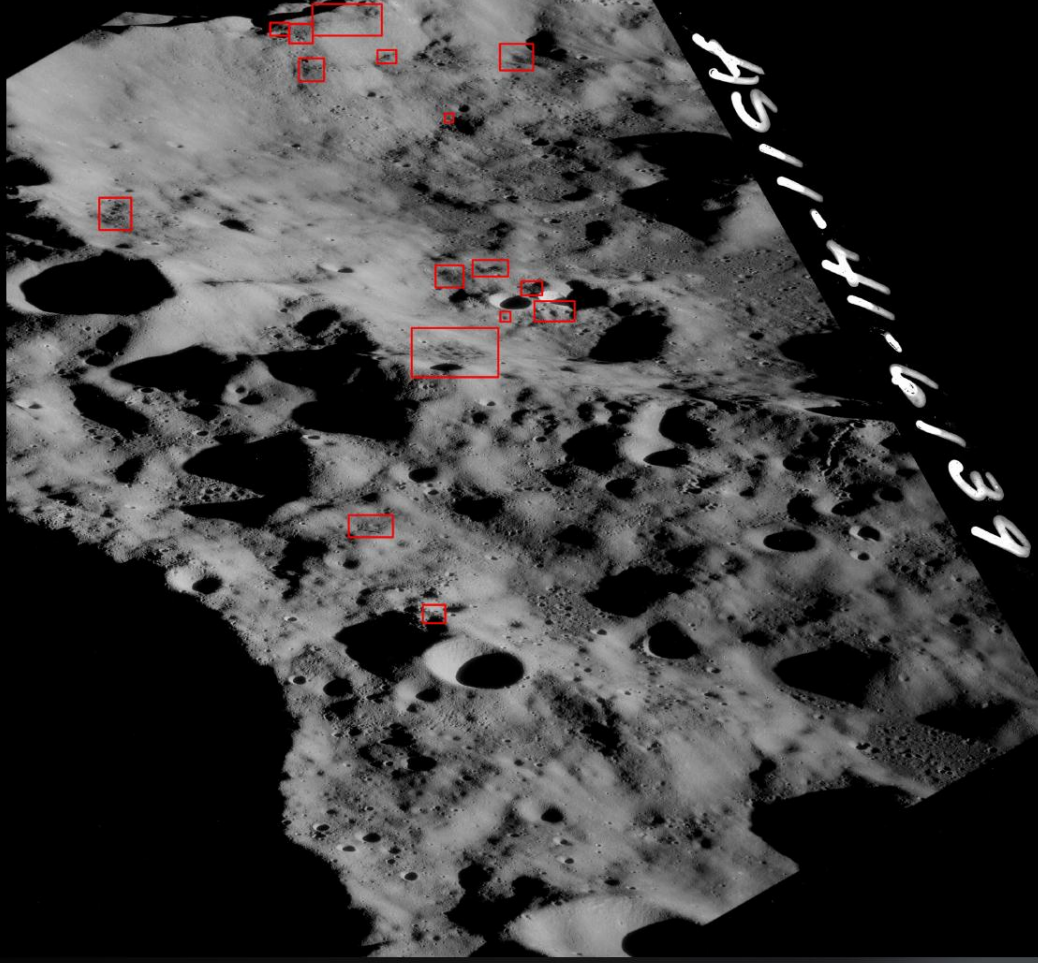


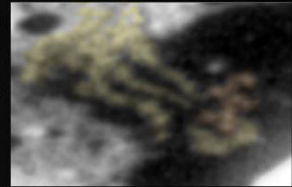
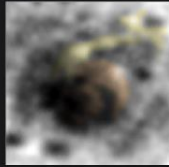
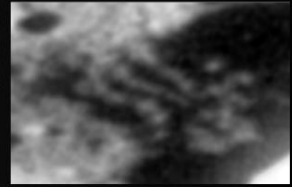
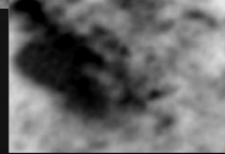
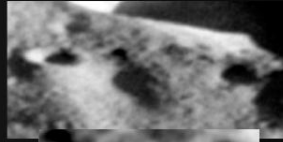
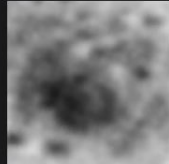
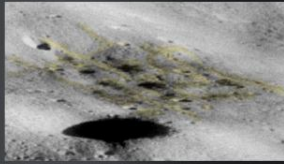
AS10-28-4012-E



AS10-28-4012-E

AS11-41-6139





AS11-41-6139-A

AS11-41-6139-B

AS11-41-6139-C

AS11-41-6139-D

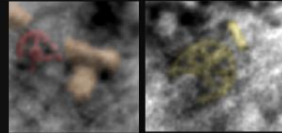
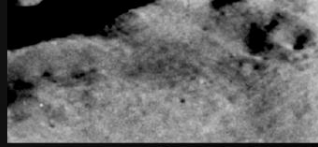
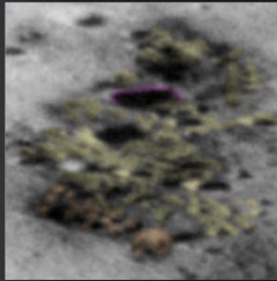
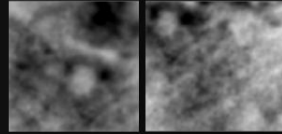
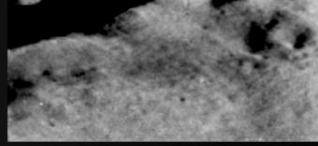
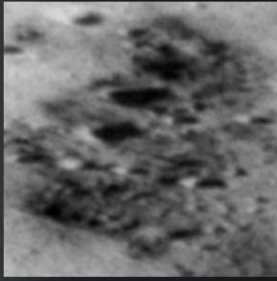


AS11-41-6139-E

AS11-41-6139-F

AS11-41-6139-G

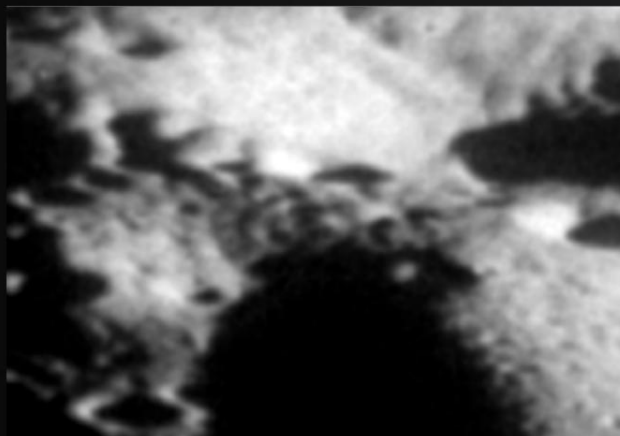
AS11-41-6139-H



AS11-41-6139-I

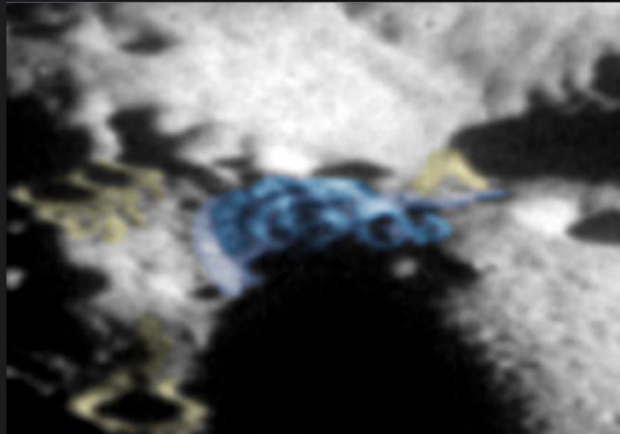
AS11-41-6139-J

AS11-41-6139



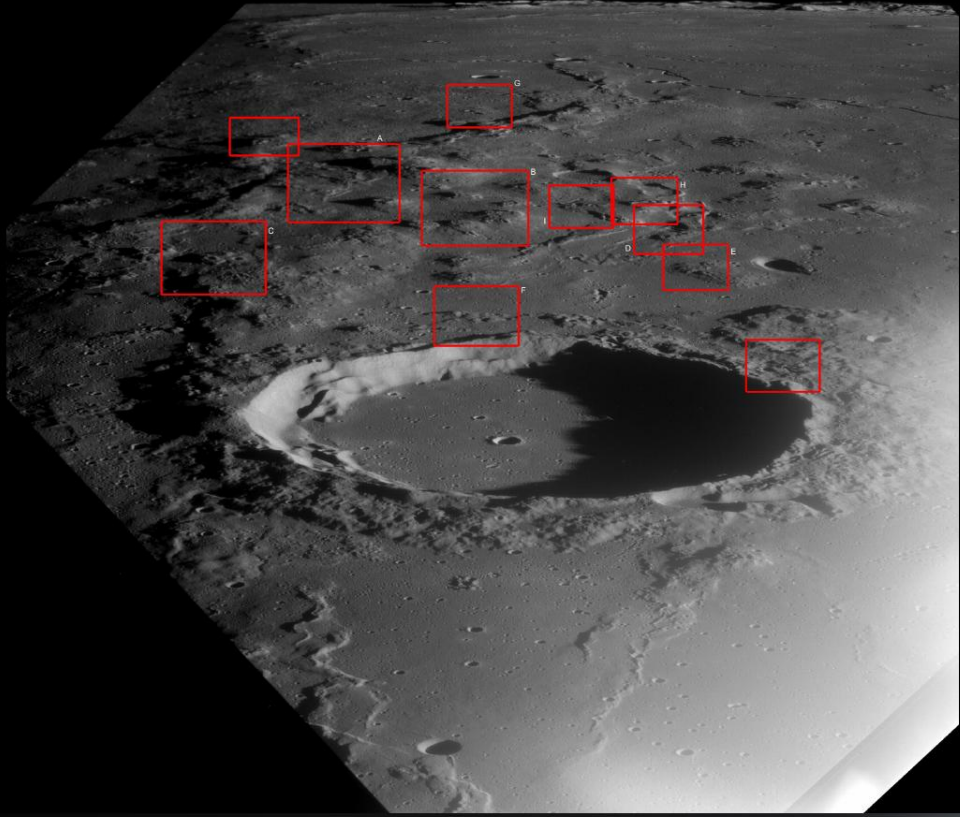
AS11-41-6139-K

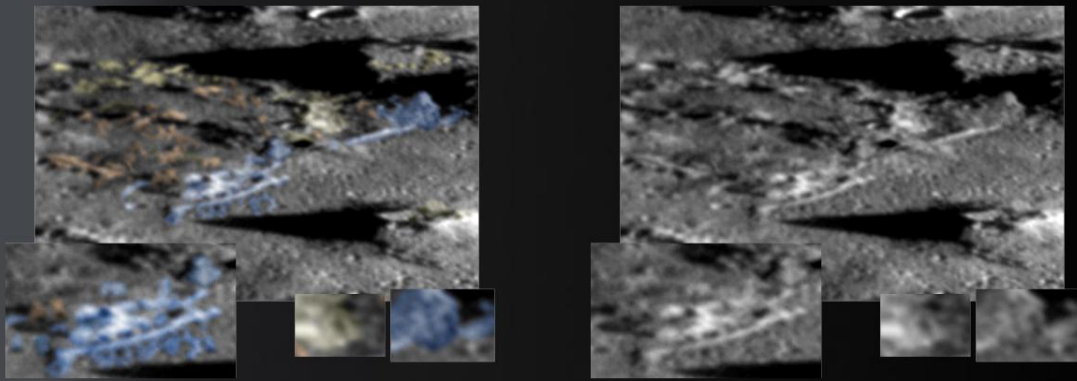




AS11-41-6139-K

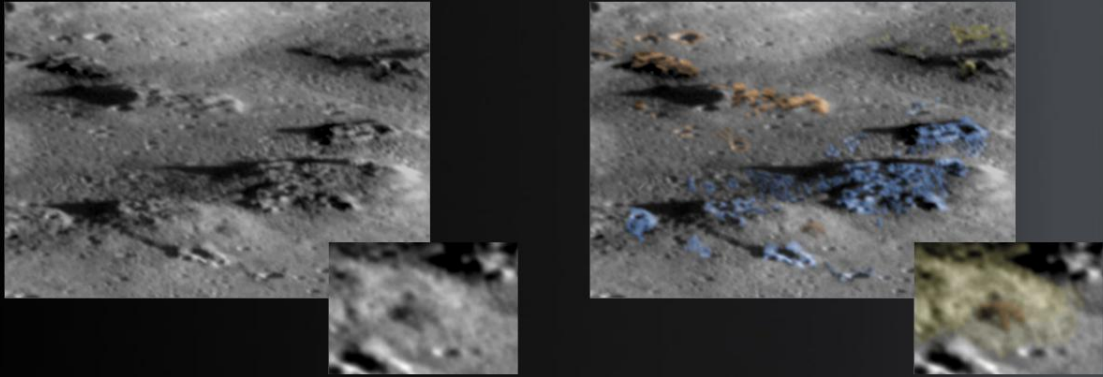
AS12-52-7757



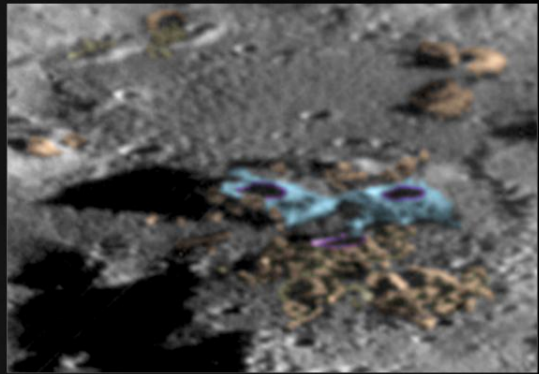
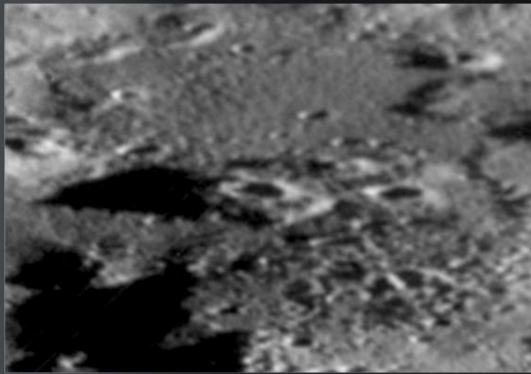


AS12-52-7757-A

AS12-52-7757

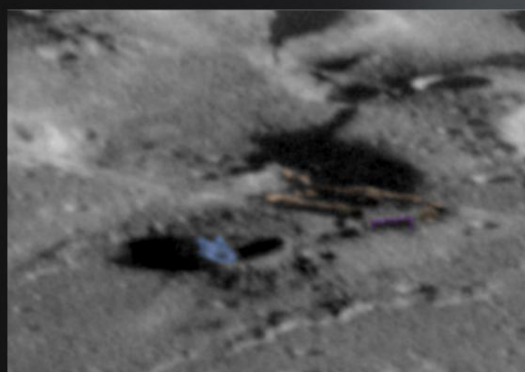


AS12-52-7757-B

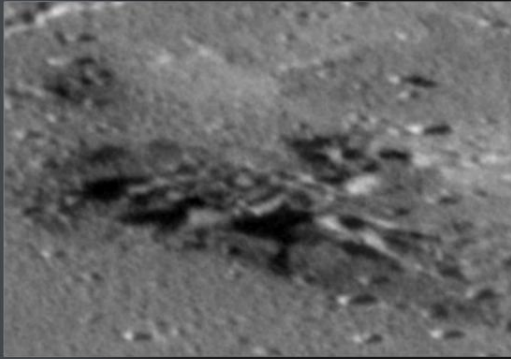


AS12-52-7757-C

AS12-52-7757

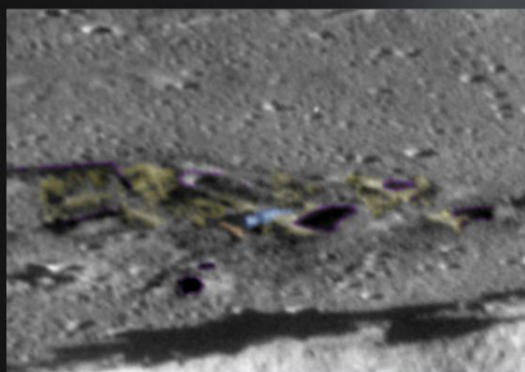


AS12-52-7757-D



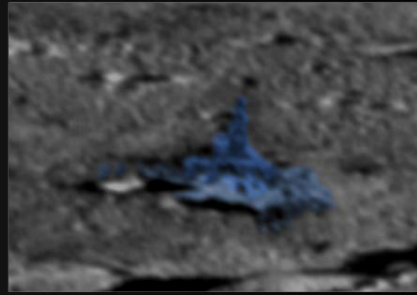
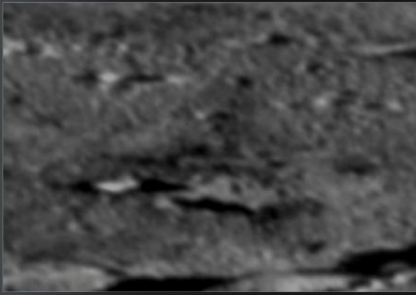
AS12-52-7757-E

AS12-52-7757

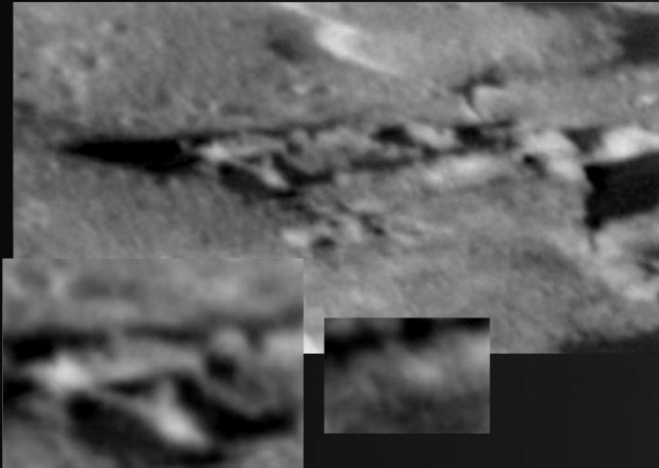


AS12-52-7757-F

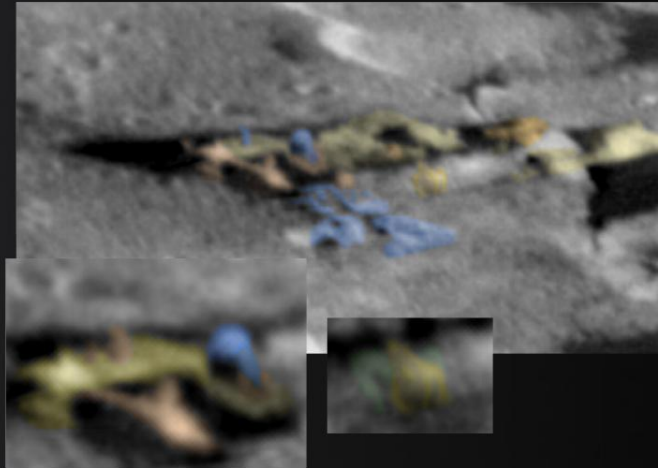




AS12-52-7757-G



AS12-52-7757-H

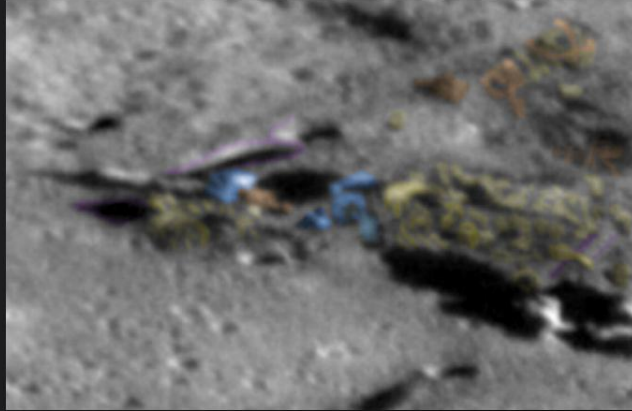


AS12-52-7757-H

AS12-52-7757



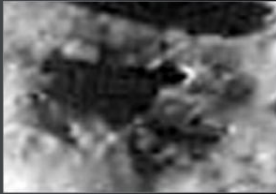
AS12-52-7757-1



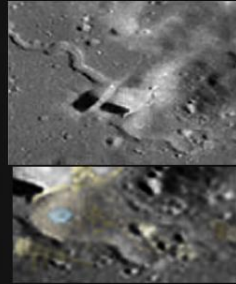
AS12-52-7757-1

AS15-88-12002





AS15-88-12002-B1



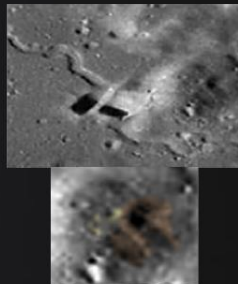
AS15-88-12002-B2



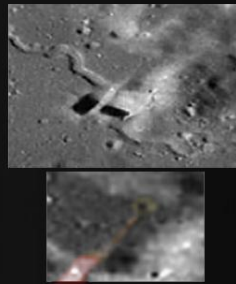
AS15-88-12002-B3



AS15-88-12002-A



AS15-88-12002-B4



AS15-88-12002-B5



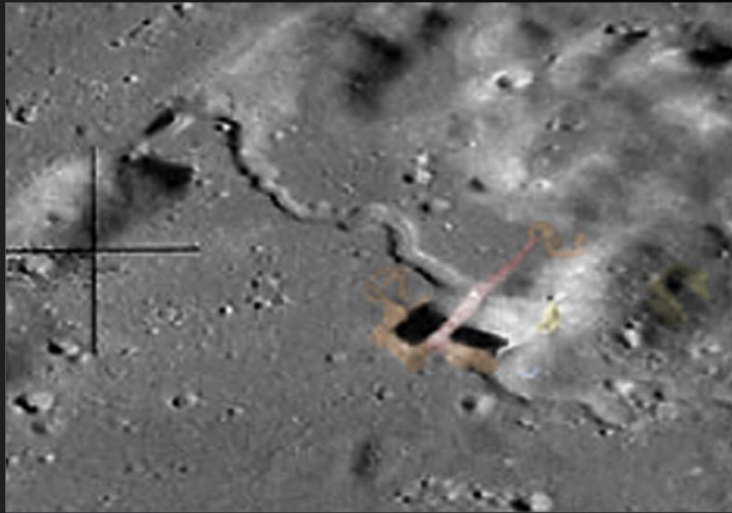
AS15-88-12002-B6

AS15-88-12002



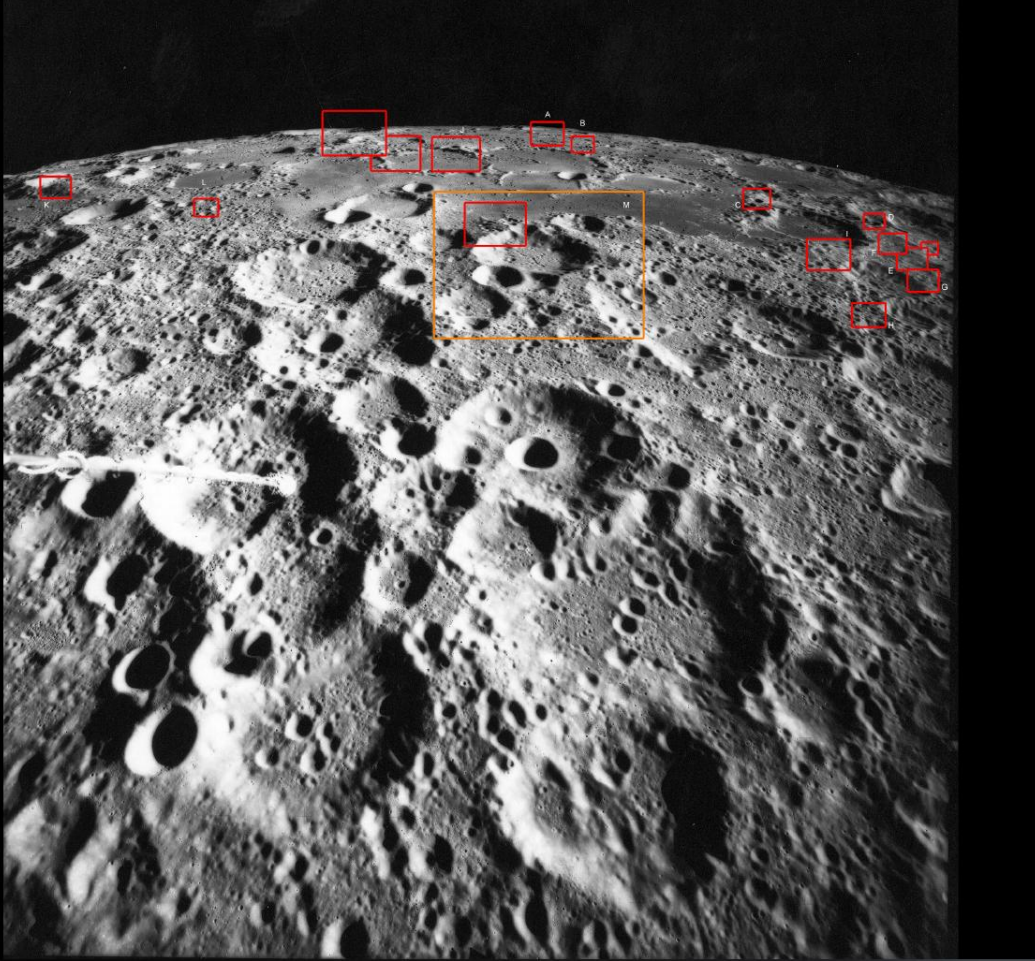
AS15-88-12002-B

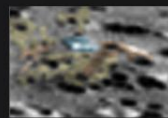
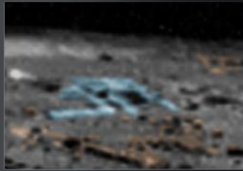
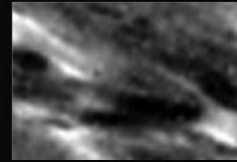
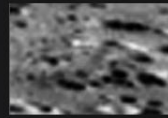
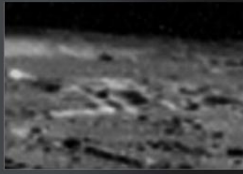




AS15-88-12002-B

AS15-M-2502





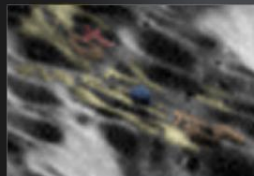
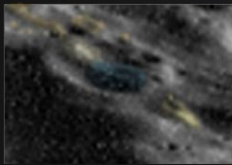
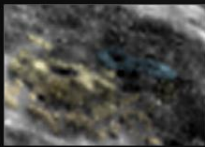
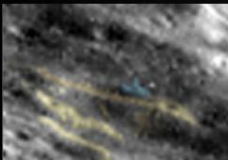
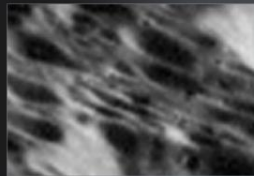
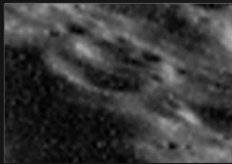
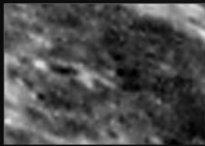
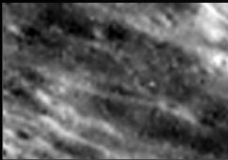
AS15-M-2502-A

AS15-M-2502-B

AS15-M-2502-C

AS15-M-2502-D

AS15-M-2502

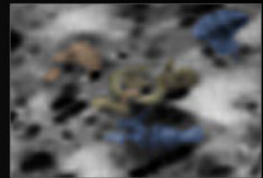
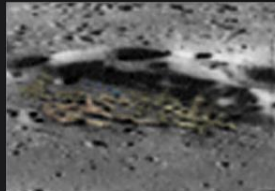
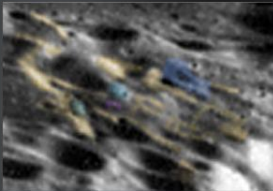
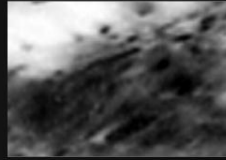
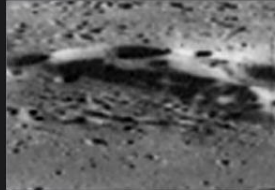
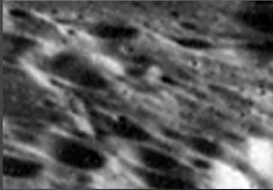


AS15-M-2502-E

AS15-M-2502-F

AS15-M-2502-G

AS15-M-2502-H



AS15-M-2502-I

AS15-M-2502-J

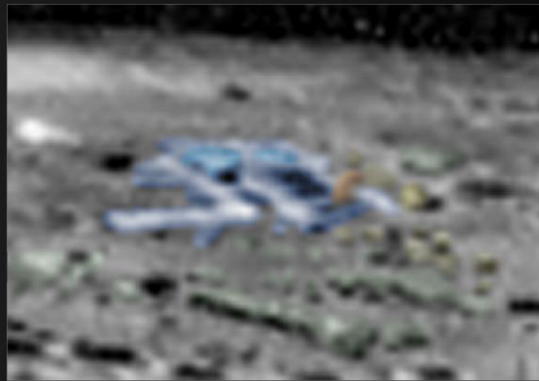
AS15-M-2502-K

AS15-M-2502-L

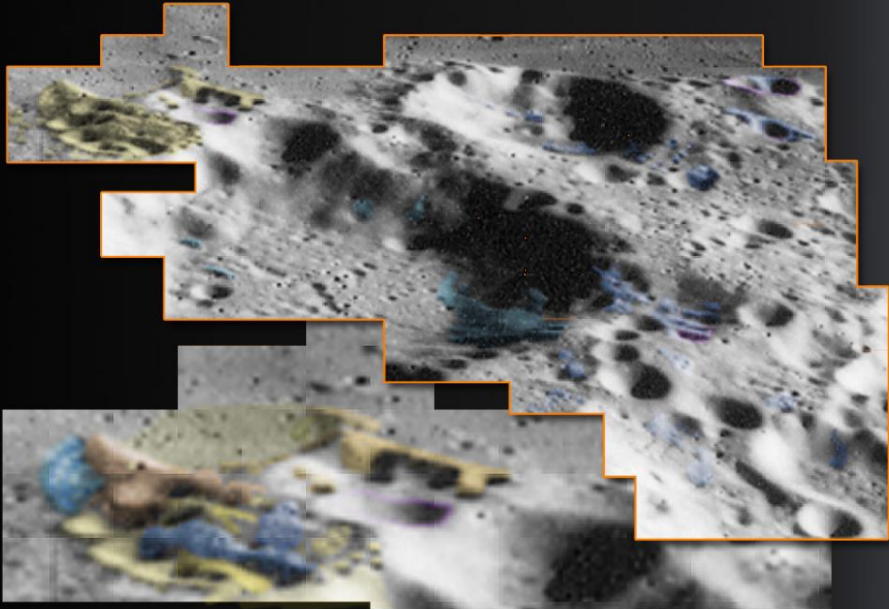
AS15-M-2502



AS15-M-2502-A

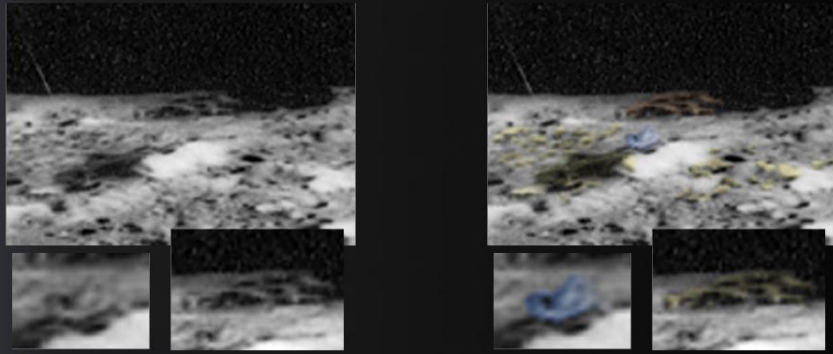


AS15-M-2502-A



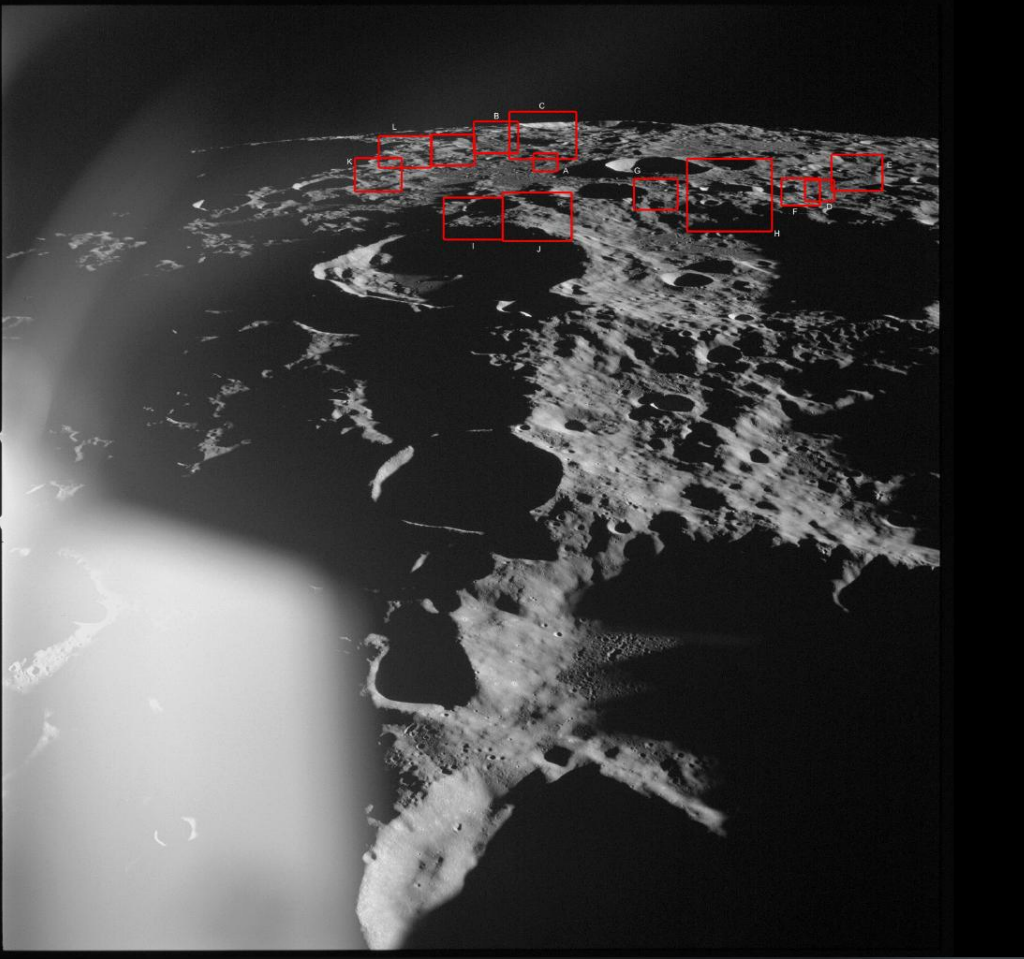
AS15-M-2502-M

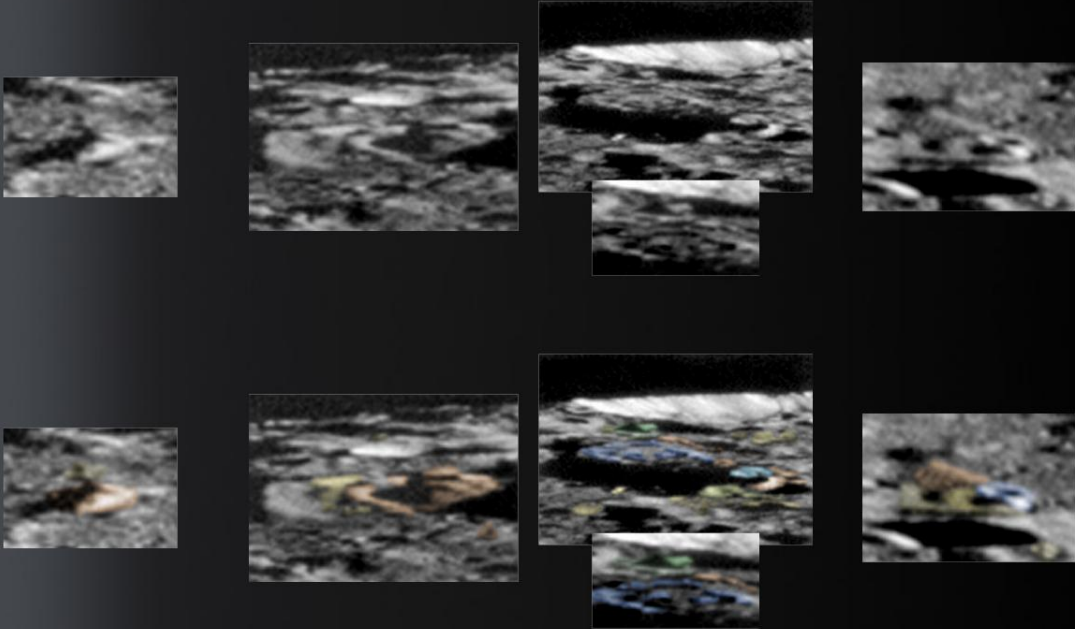




AS15-M-2502-X (NOT REFERENCED)

AS17-150-22942



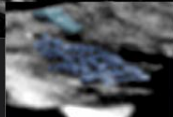
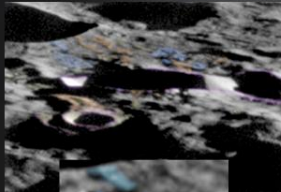
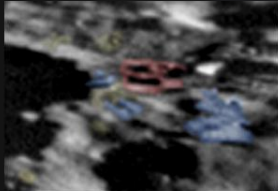
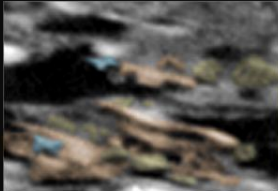
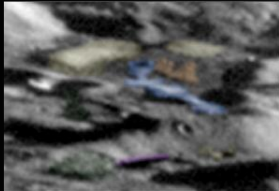
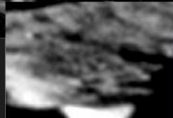
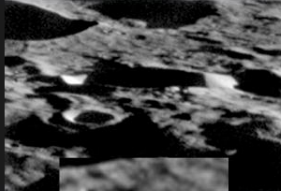
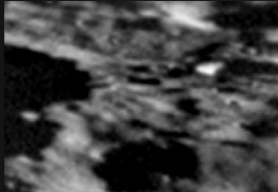
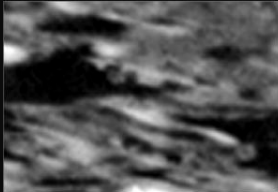
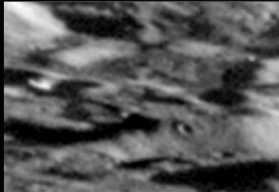


AS17-150-22942-A

AS17-150-22942-B

AS17-150-22942-C

AS17-150-22942-D

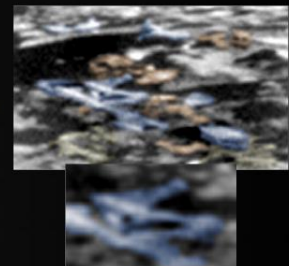
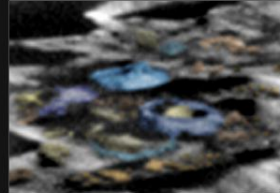
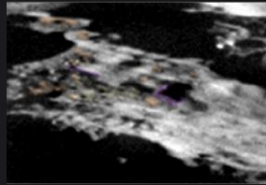
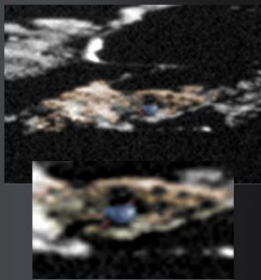
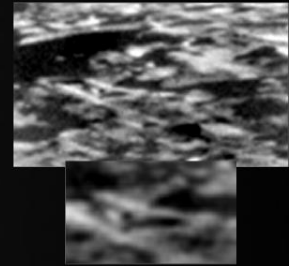
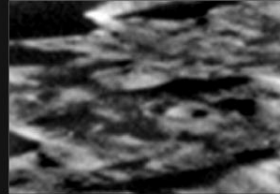
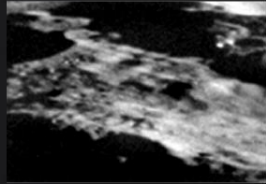
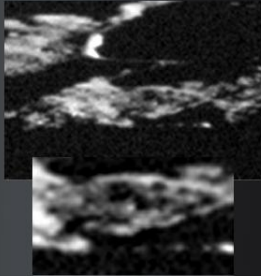


AS17-150-22942-E

AS17-150-22942-F

AS17-150-22942-G

AS17-150-22942-H



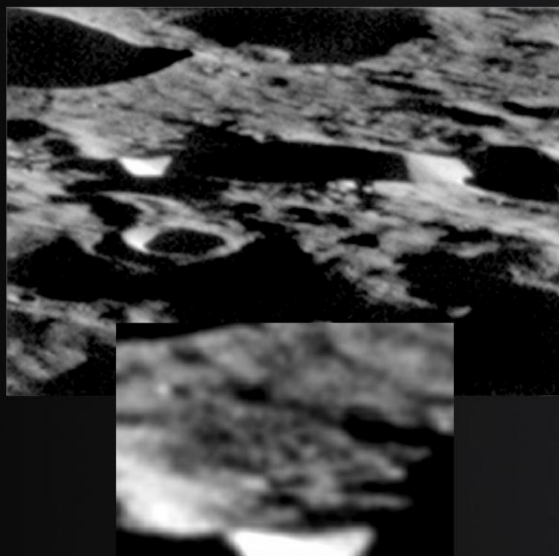
AS17-150-22942-I

AS17-150-22942-J

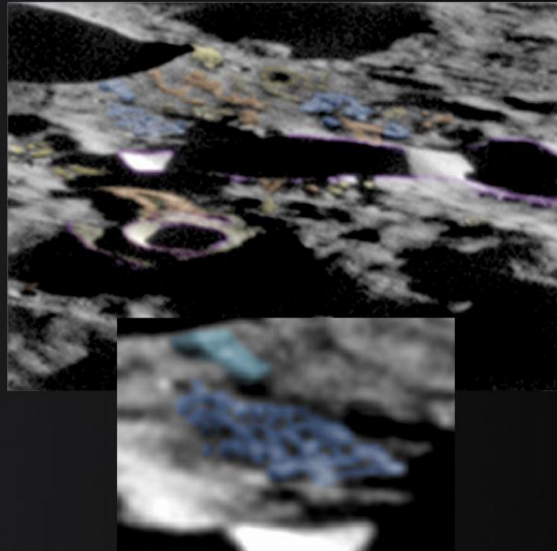
AS17-150-22942-K

AS17-150-22942-L

AS17-150-22942

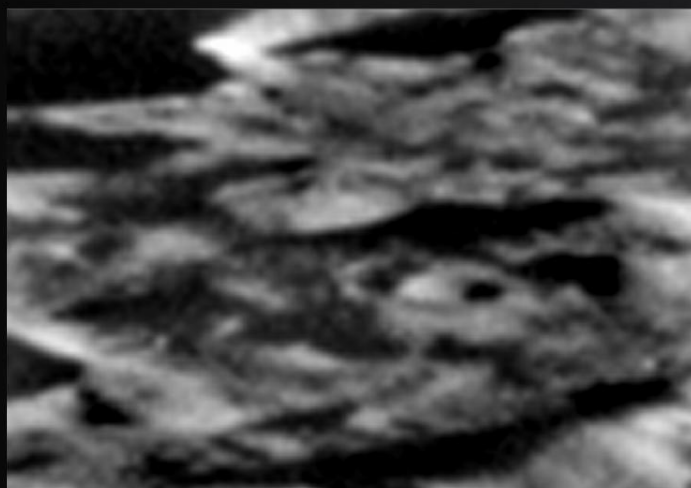


AS17-150-22942-H



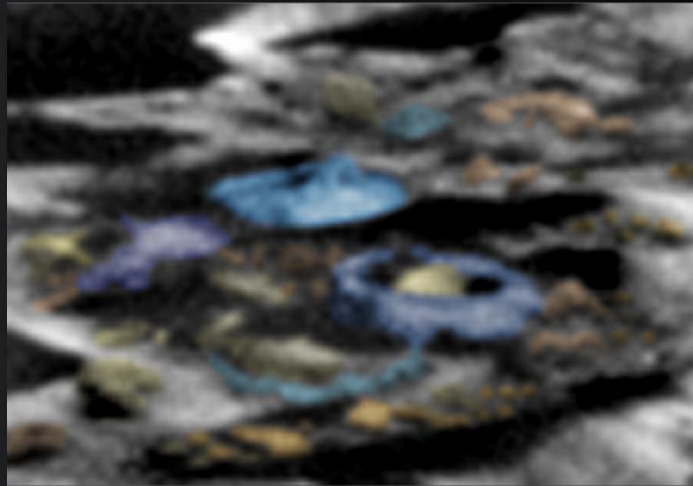
AS17-150-22942-H

AS17-150-22942



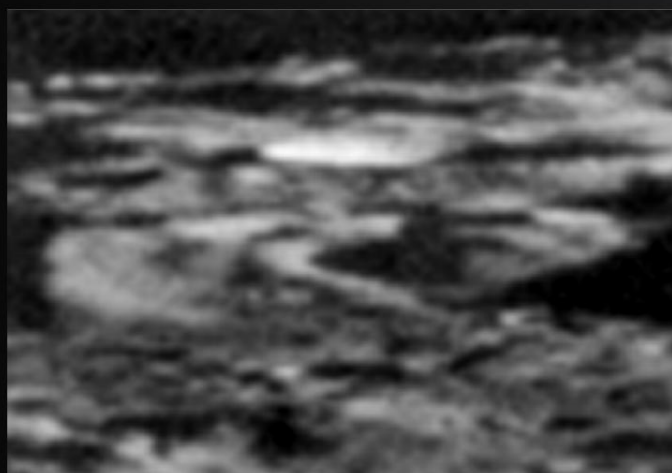
AS17-150-22942-K



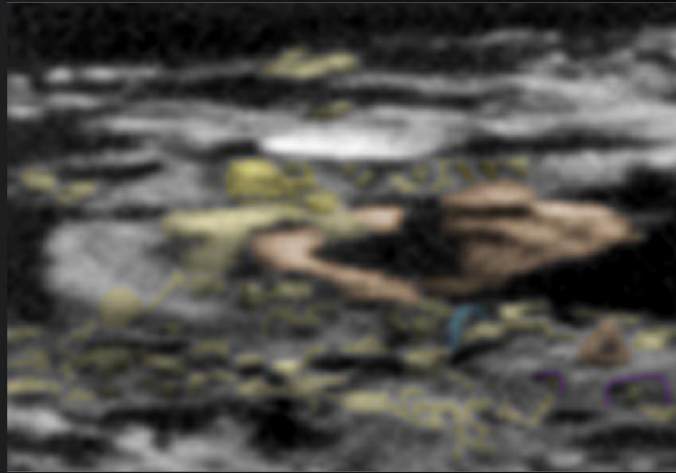


AS17-150-22942-K

AS17-150-22942



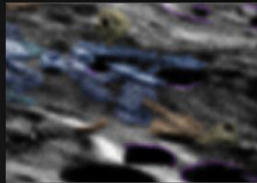
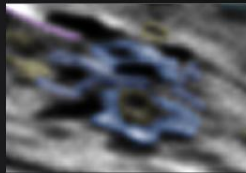
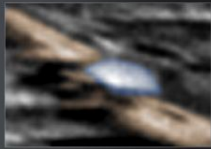
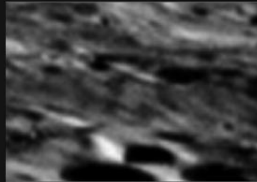
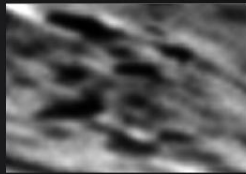
AS17-150-22942-B



AS17-150-22942-B

AS17-150-22948





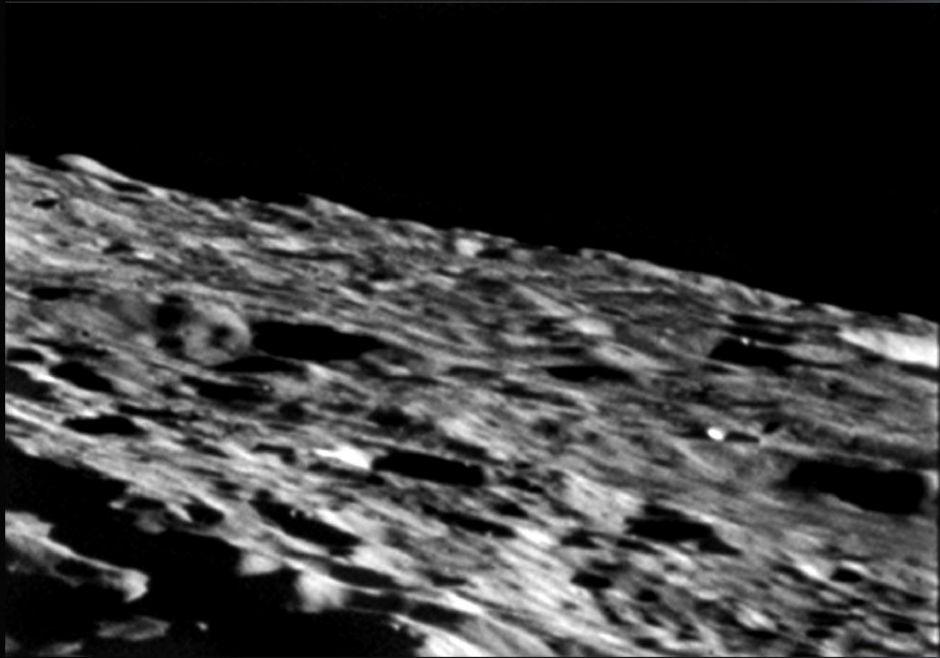
AS17-150-22948-A1

AS17-150-22948-A2

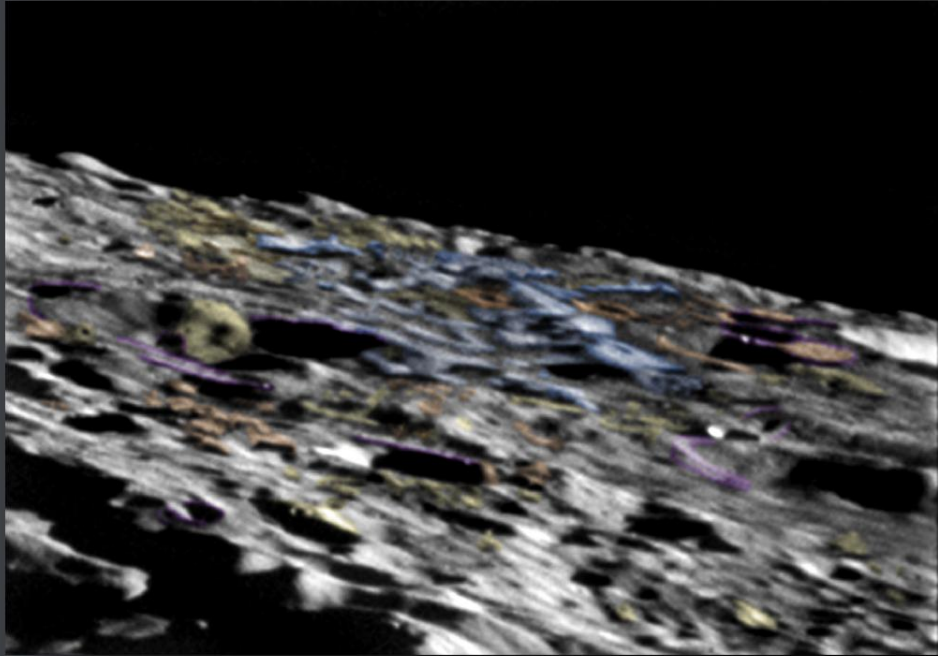
AS17-150-22948-B1

AS17-150-22948-B2

AS17-150-22948

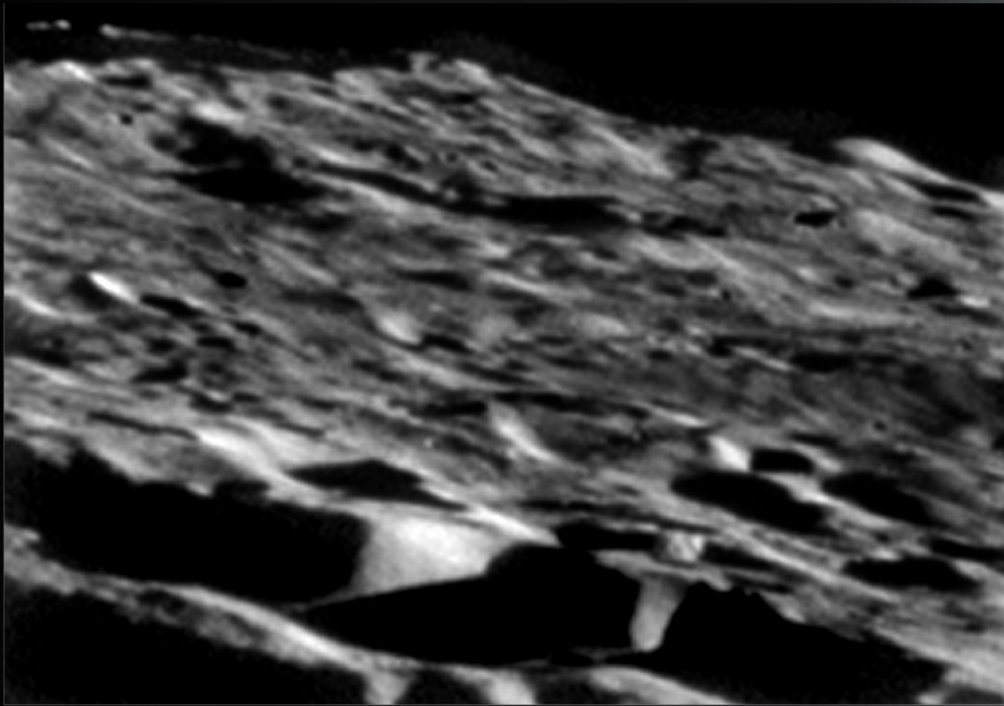


AS17-150-22948-A



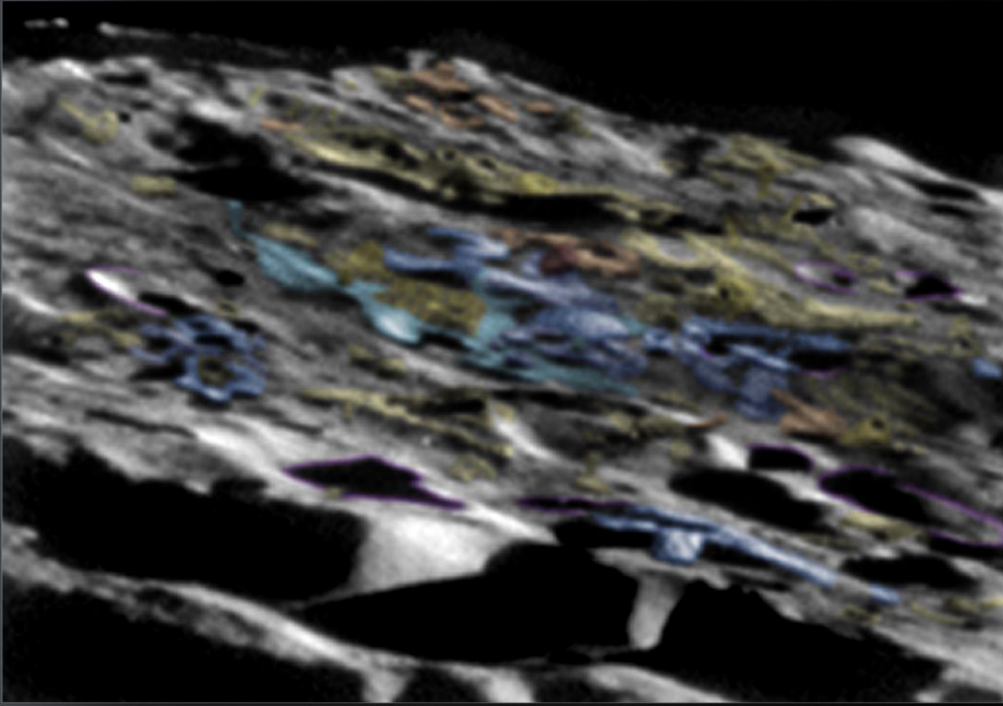
AS17-150-22948-A

AS17-150-22948



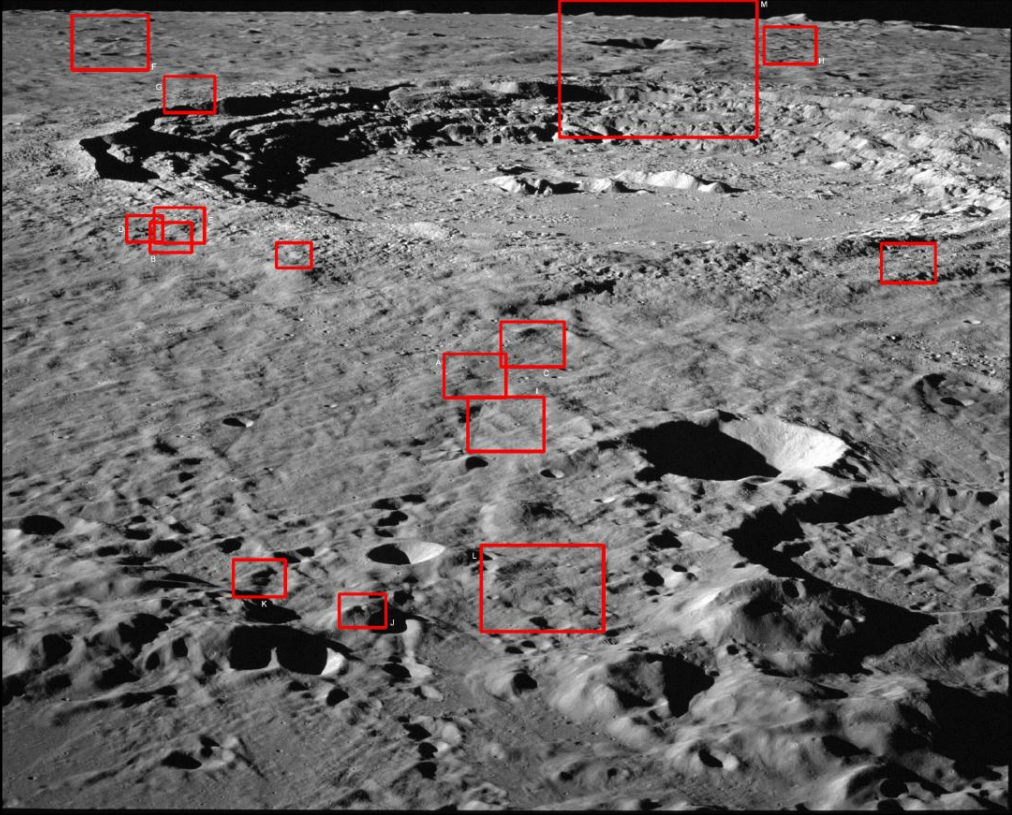
AS17-150-22948-B

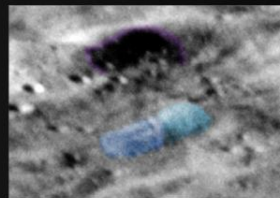
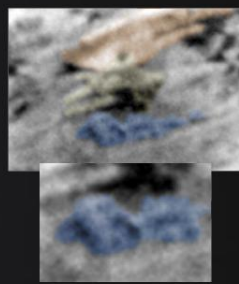
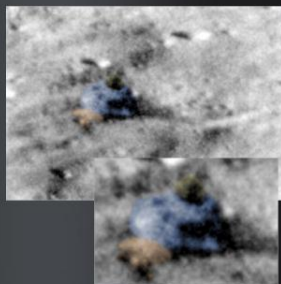
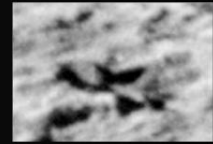
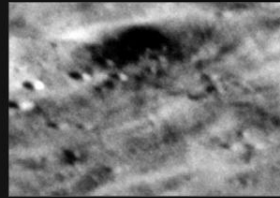
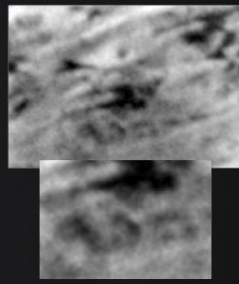
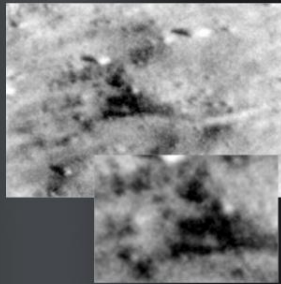




AS17-150-22948-B

AS17-151-23260





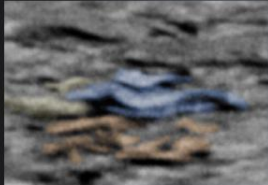
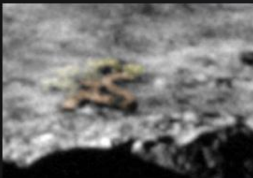
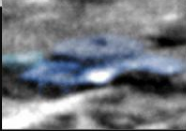
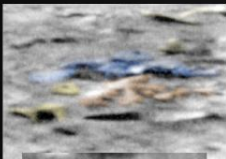
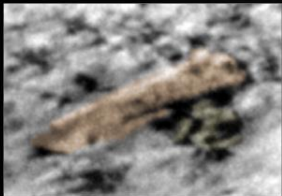
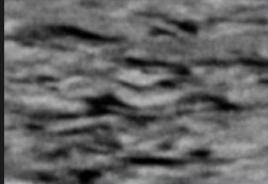
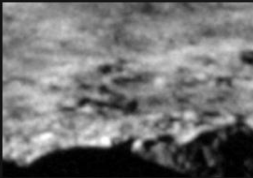
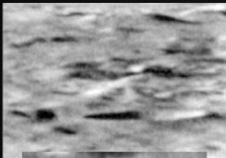
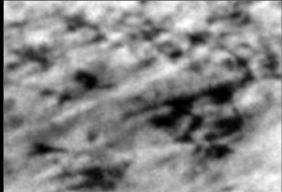
AS17-151-23260-A

AS17-151-23260-B

AS17-151-23260-C

AS17-151-23260-D

AS17-151-23260

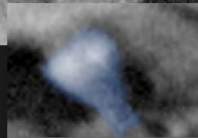
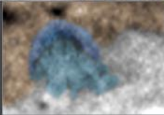
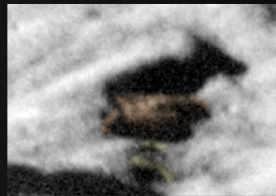
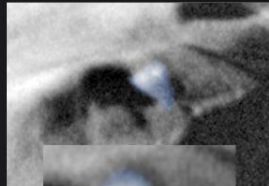
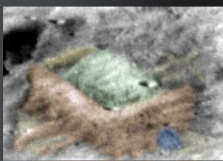
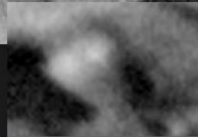
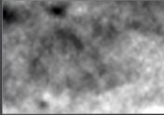
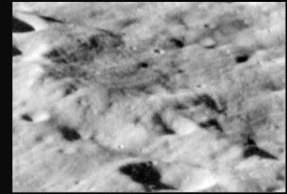
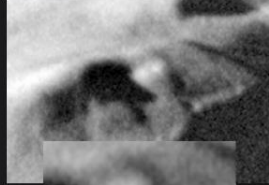
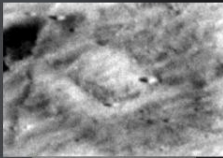


AS17-151-23260-E

AS17-151-23260-F

AS17-151-23260-G

AS17-151-23260-H



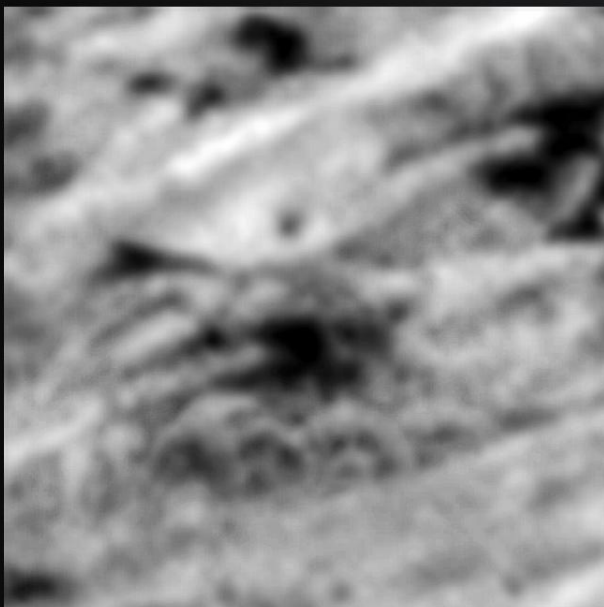
AS17-151-23260-I

AS17-151-23260-J

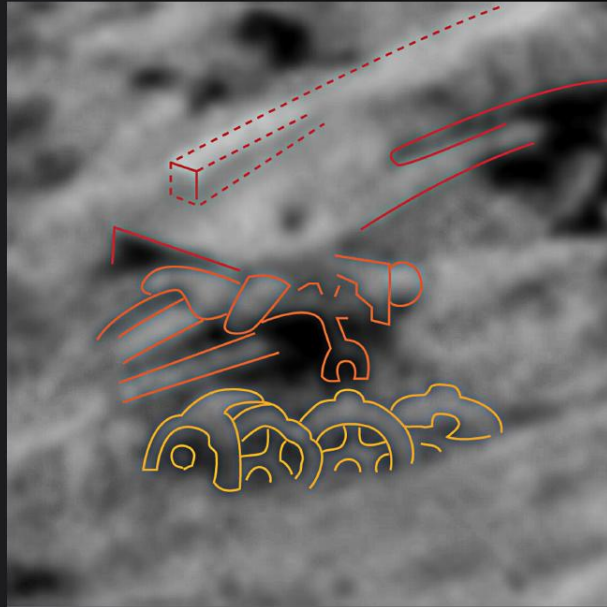
AS17-151-23260-K

AS17-151-23260-L

AS17-151-23260

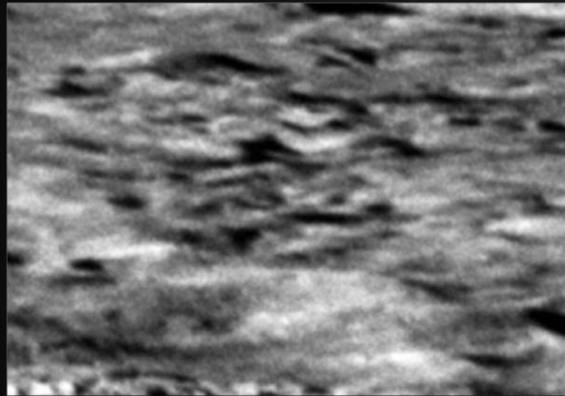


AS17-151-23260-B



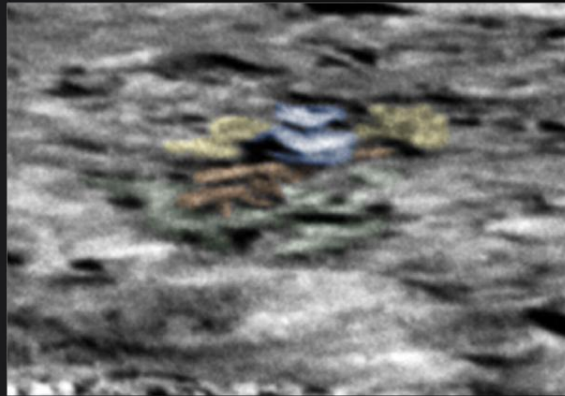
AS17-151-23260-B

AS17-151-23260



AS17-151-23260-H





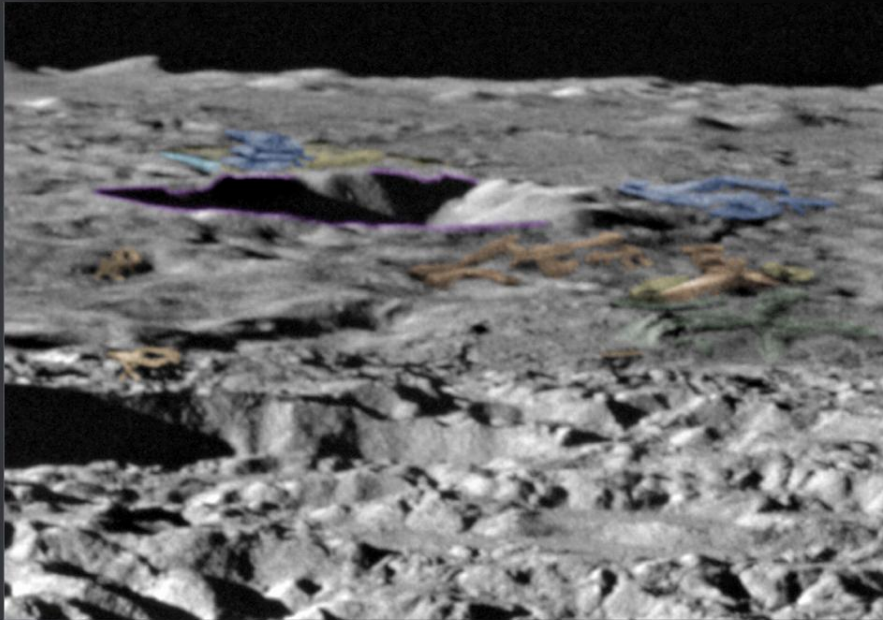
AS17-151-23260-H

AS17-151-23260



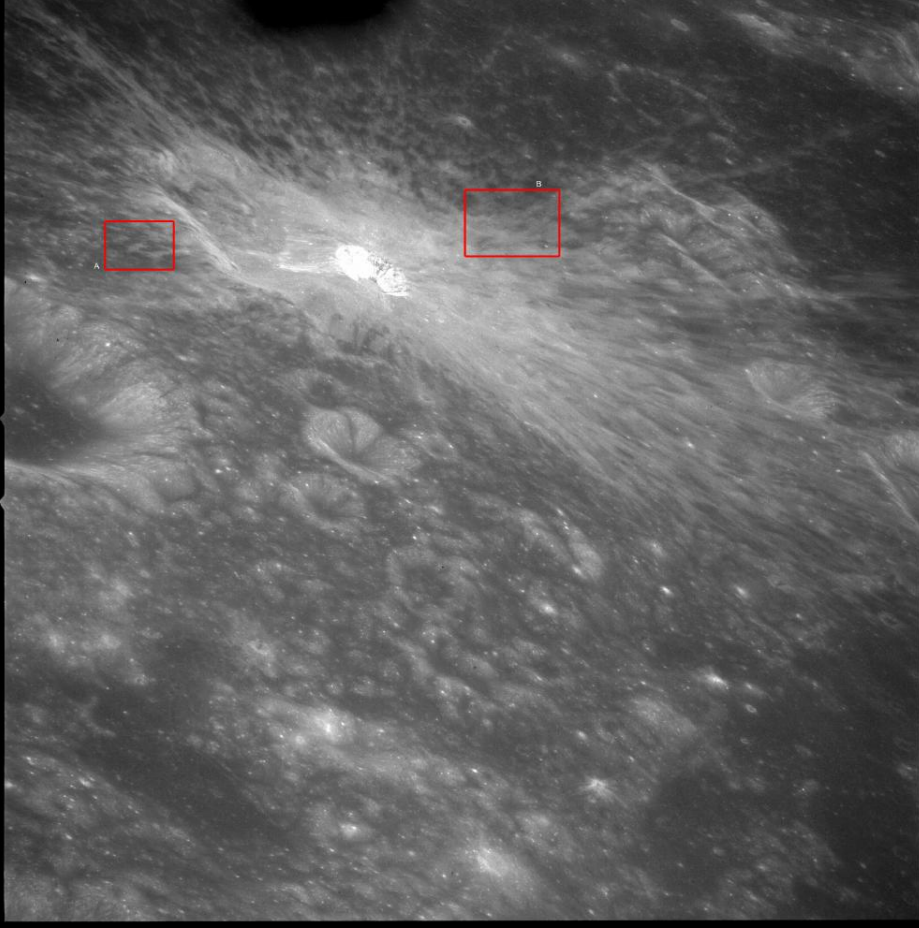
AS17-151-23260-M

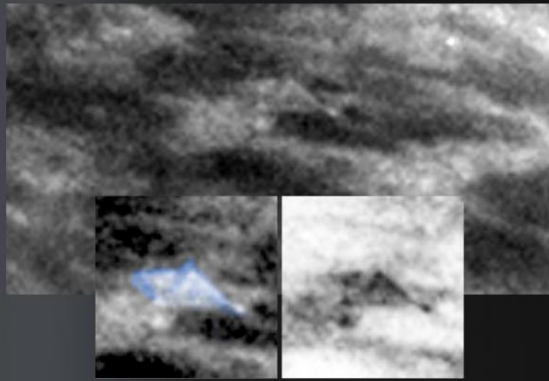
AS17-151-23260



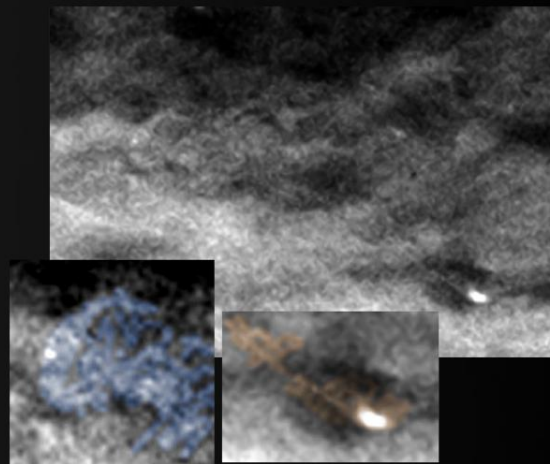
AS17-151-23260-M

AS17-151-23261



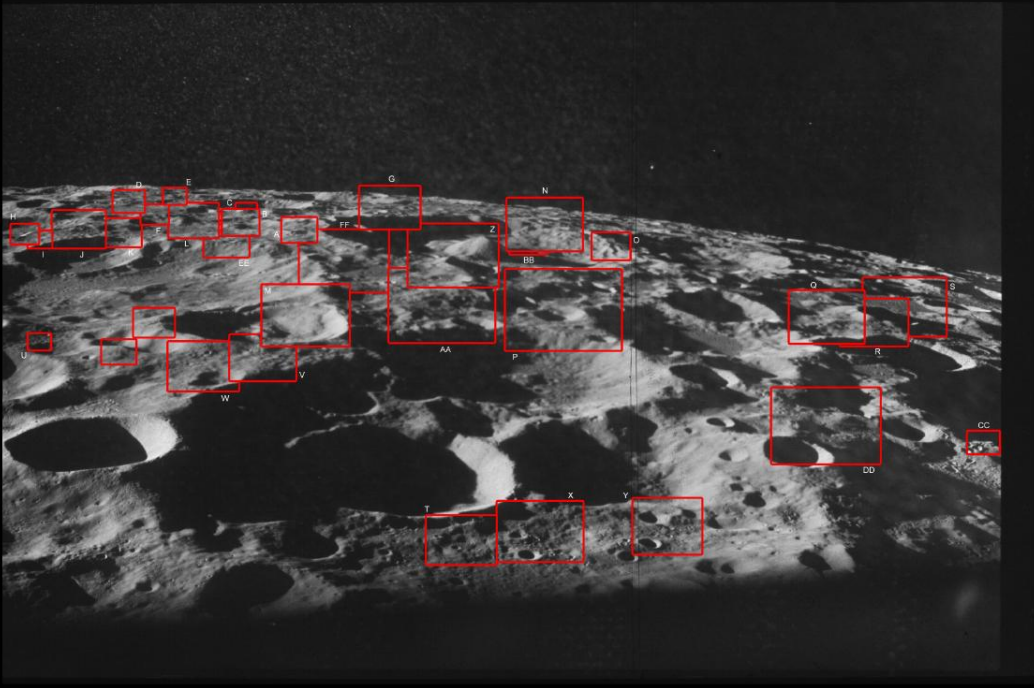


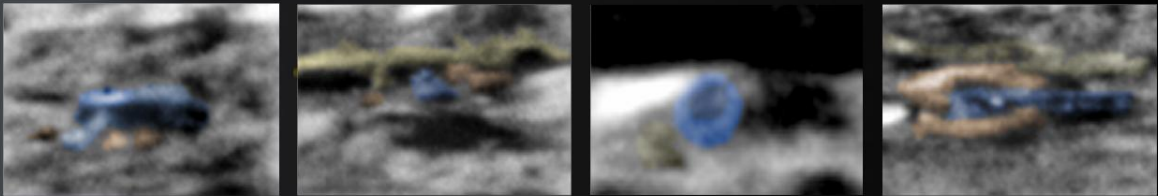
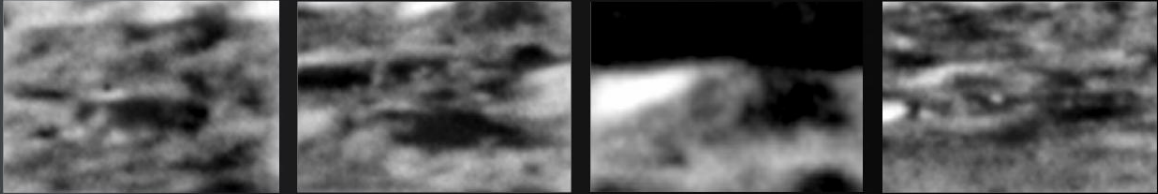
AS17-151-23261-A



AS17-151-23261-B

AS17-162-24106





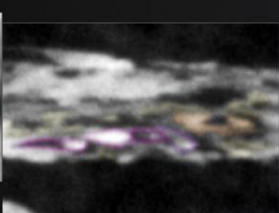
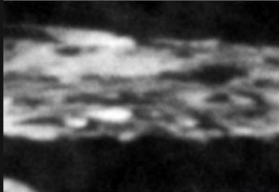
AS17-162-24106-A

AS17-162-24106-B

AS17-162-24106-C

AS17-162-24106-D

AS17-162-24106



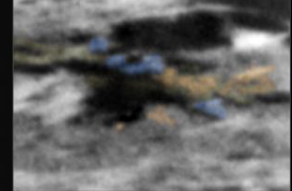
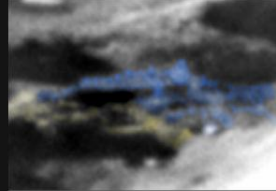
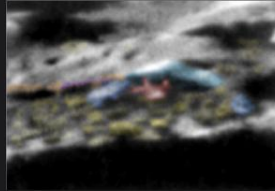
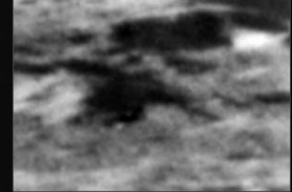
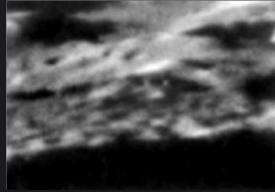
AS17-162-24106-E

AS17-162-24106-F

AS17-162-24106-G

AS17-162-24106-H





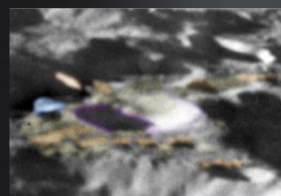
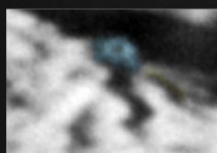
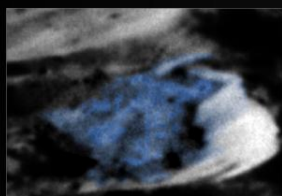
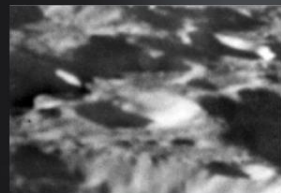
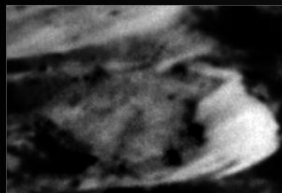
AS17-162-24106-I

AS17-162-24106-J

AS17-162-24106-K

AS17-162-24106-L

AS17-162-24106

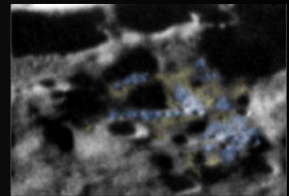
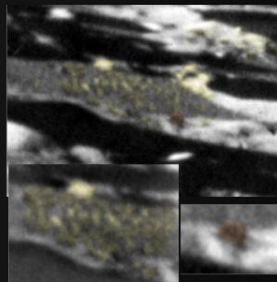
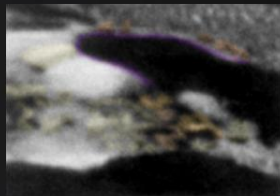
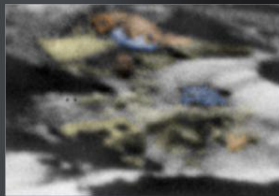
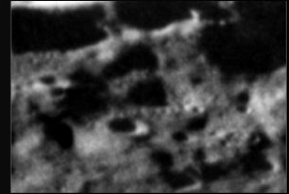
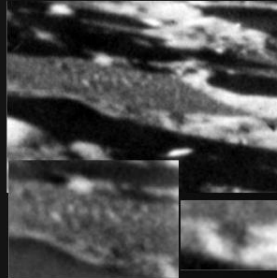
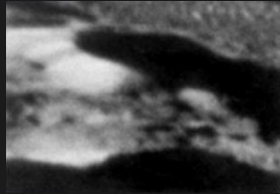


AS17-162-24106-M

AS17-162-24106-N

AS17-162-24106-O

AS17-162-24106-P



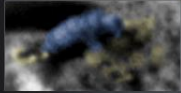
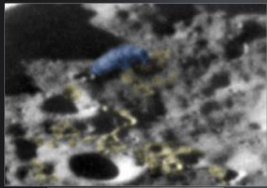
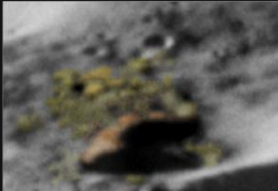
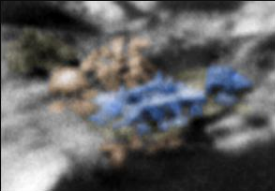
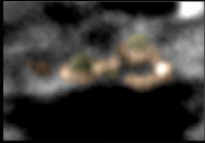
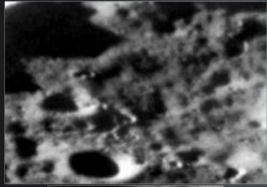
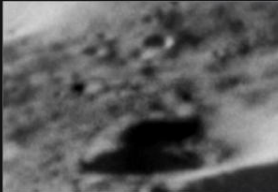
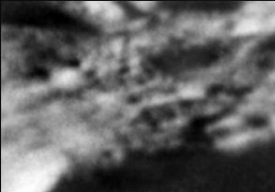
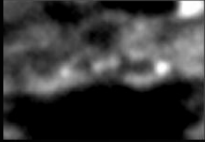
AS17-162-24106-Q

AS17-162-24106-R

AS17-162-24106-S

AS17-162-24106-T

AS17-162-24106

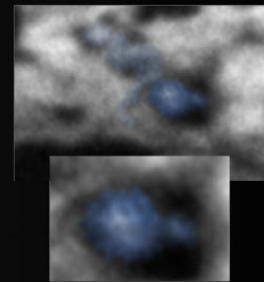
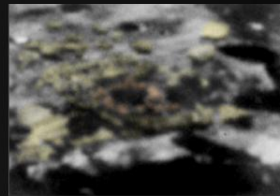
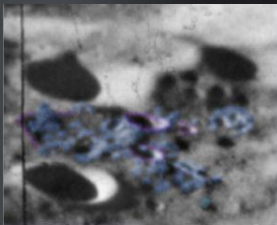
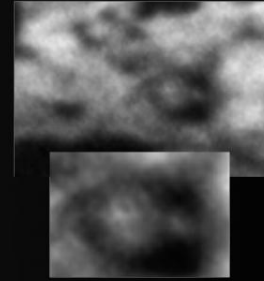
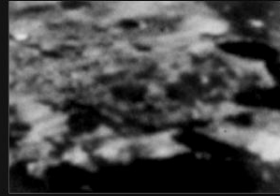
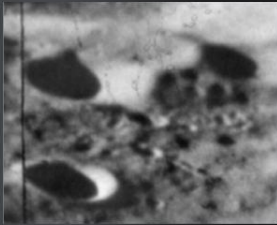


AS17-162-24106-U

AS17-162-24106-V

AS17-162-24106-W

AS17-162-24106-X

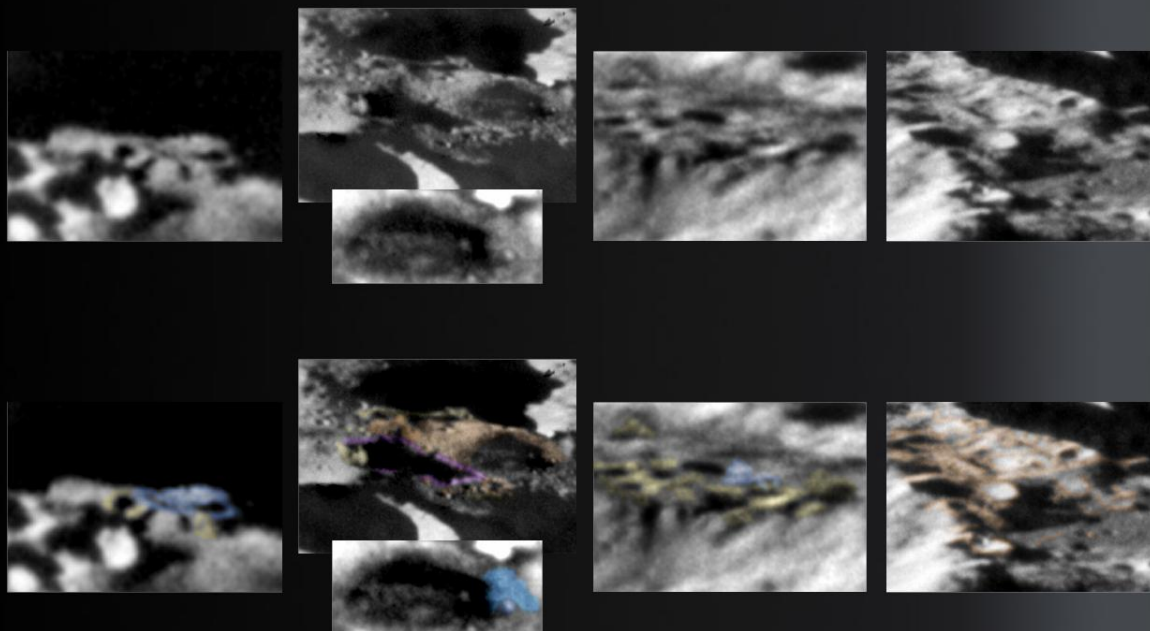


AS17-162-24106-Y

AS17-162-24106-Z

AS17-162-24106-AA

AS17-162-24106-BB

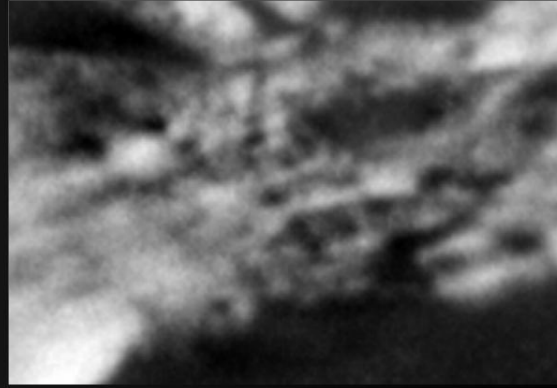


AS17-162-24106-CC

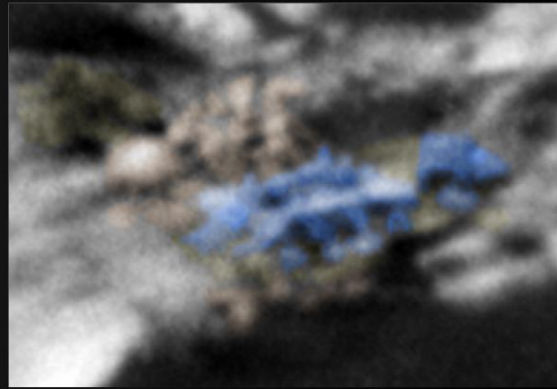
AS17-162-24106-DD

AS17-162-24106-EE

AS17-162-24106-FF

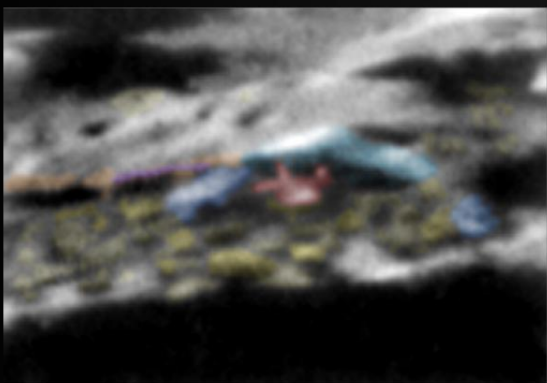
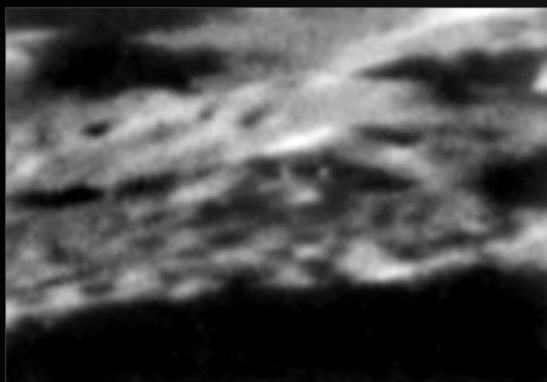


AS17-162-24106-A



AS17-162-24106-V

AS17-162-24106



AS17-162-24106-J

AS17-162-24106-B