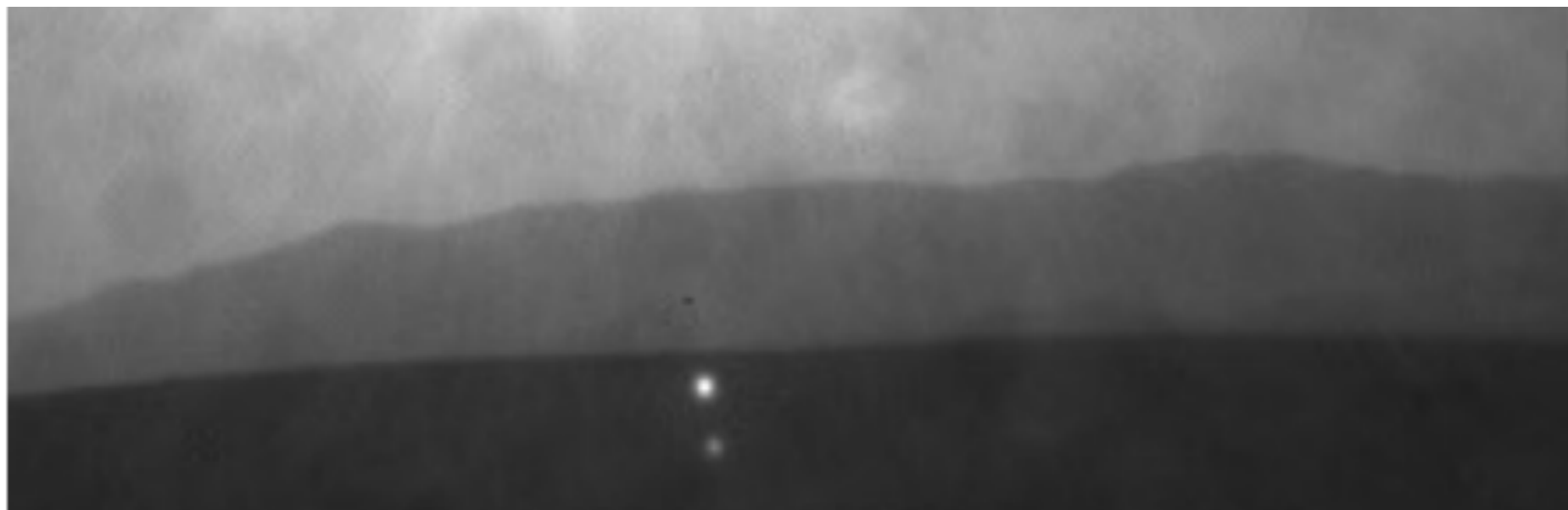




# Things in the Martian Sky

William S. Romoser, Ph.D.  
[scienceofentomology.com](http://scienceofentomology.com)



# BACKGROUND

- The material analyzed in this report is from NASA-JPL photos sent back to Earth primarily by Curiosity Rover. The images presented here contain objects that contrast with the Martian sky.
- Earlier I posted two slide presentations on this topic on ResearchGate and on YouTube. *“Unidentified Aerial Phenomena on Mars”* and *“Additional Evidence for Unidentified Aerial Phenomena (UAPs; UFOs) on Mars & Possible Grounded Aerial Craft”*.



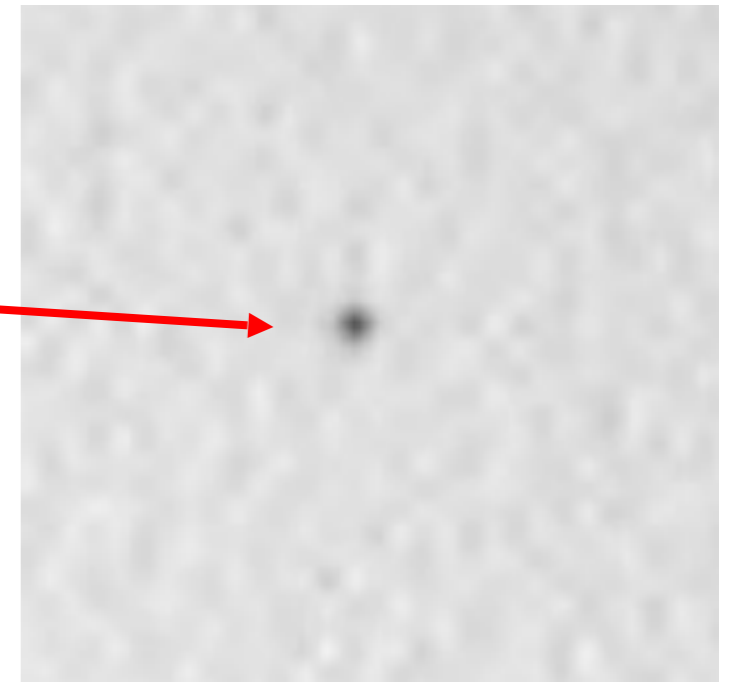
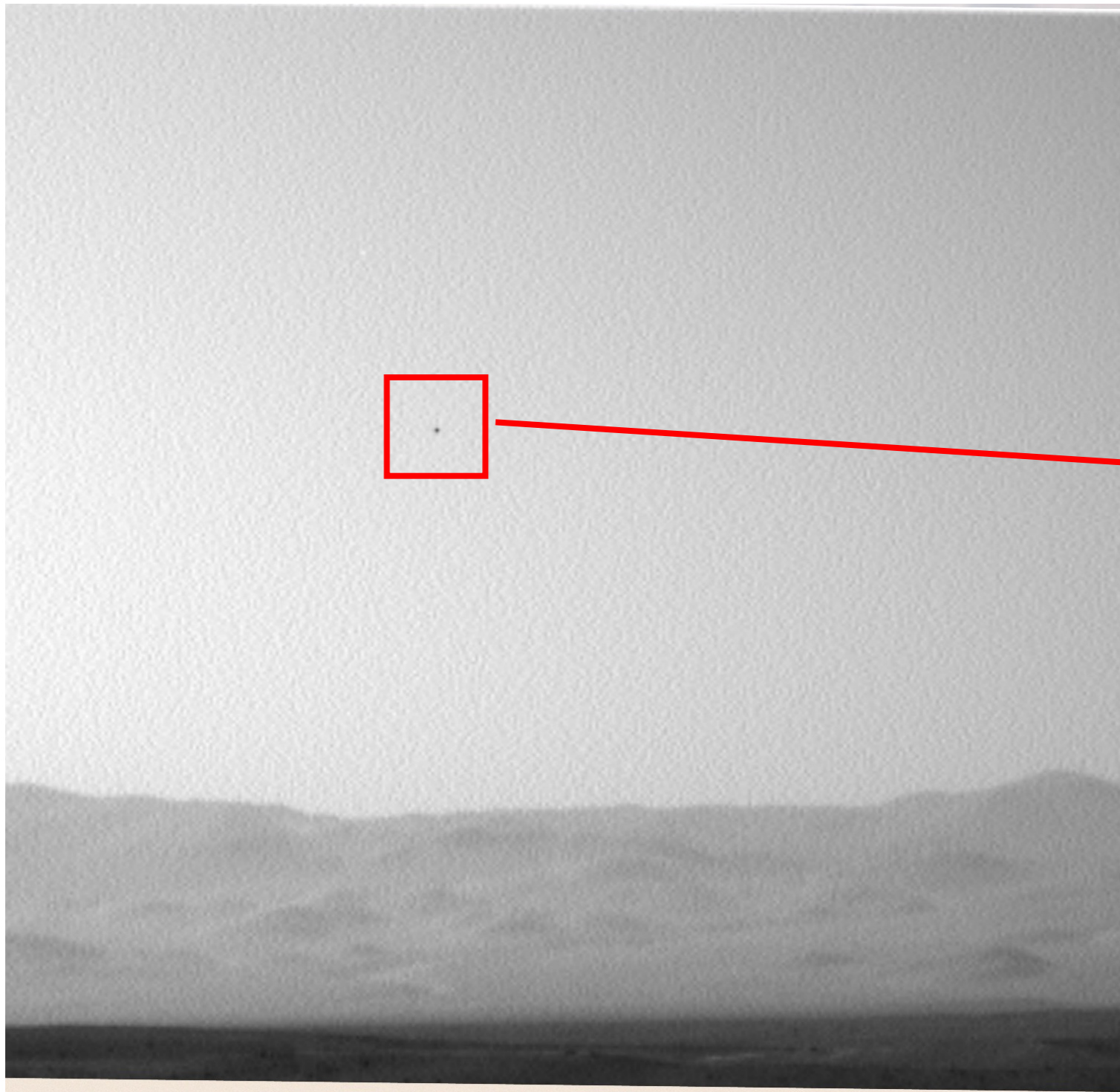
- The earlier presentations have become outdated in light of evidence of flying insect-like forms on Mars as presented in my poster at the 2019 meeting of the Entomological Society of America:
- [https://www.researchgate.net/deref/http%3A%2F%2Fdx.doi.org%2F10.13140%2FRG.2.2.12363.95520?\\_sg%5B0%5D=TDFFEYVT\\_ApwDWyCbSQYzMMiVGYcejiQ\\_FZSdFCYt7jxMggPNsjnYZMwfrMTndq1g2yFqpkGuvErKgDR9uwWAmk3A\\_4vHtKc\\_ZUcKSzDM2leFuJQtsH2NIEsTNPCbjXbqeh6tZoX\\_uy4FqFxIhr0wAN5sGSIKoHJ7fFMWHT7ih8KqYWw\)](https://www.researchgate.net/deref/http%3A%2F%2Fdx.doi.org%2F10.13140%2FRG.2.2.12363.95520?_sg%5B0%5D=TDFFEYVT_ApwDWyCbSQYzMMiVGYcejiQ_FZSdFCYt7jxMggPNsjnYZMwfrMTndq1g2yFqpkGuvErKgDR9uwWAmk3A_4vHtKc_ZUcKSzDM2leFuJQtsH2NIEsTNPCbjXbqeh6tZoX_uy4FqFxIhr0wAN5sGSIKoHJ7fFMWHT7ih8KqYWw)
- Here I have combined the two previous presentations and added information on the insect-like flying forms.

# Topics

- Dark objects in contrast with the light sky
- Insect-like flying forms
- Insect-like Forms Caught in Flight Sequence
- An artificial structure on the ground? Grounded aircraft?
- Mysterious glowing objects

# Dark Objects in Contrast with the Light Sky

- Some of these objects are dark, some glow, some are round, and some are disc-like. and more-or-less triangular
- The occurrence of these objects is common and only a few examples are presented here.
- Are these objects artifacts? ...flying organisms? ...flying craft of some sort? ...all of these?

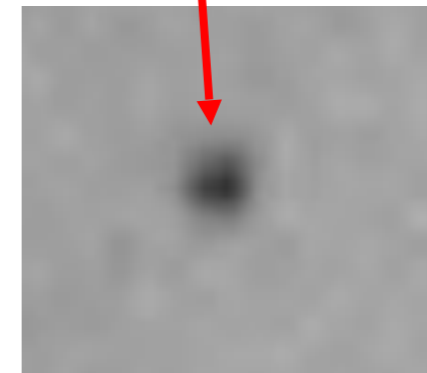
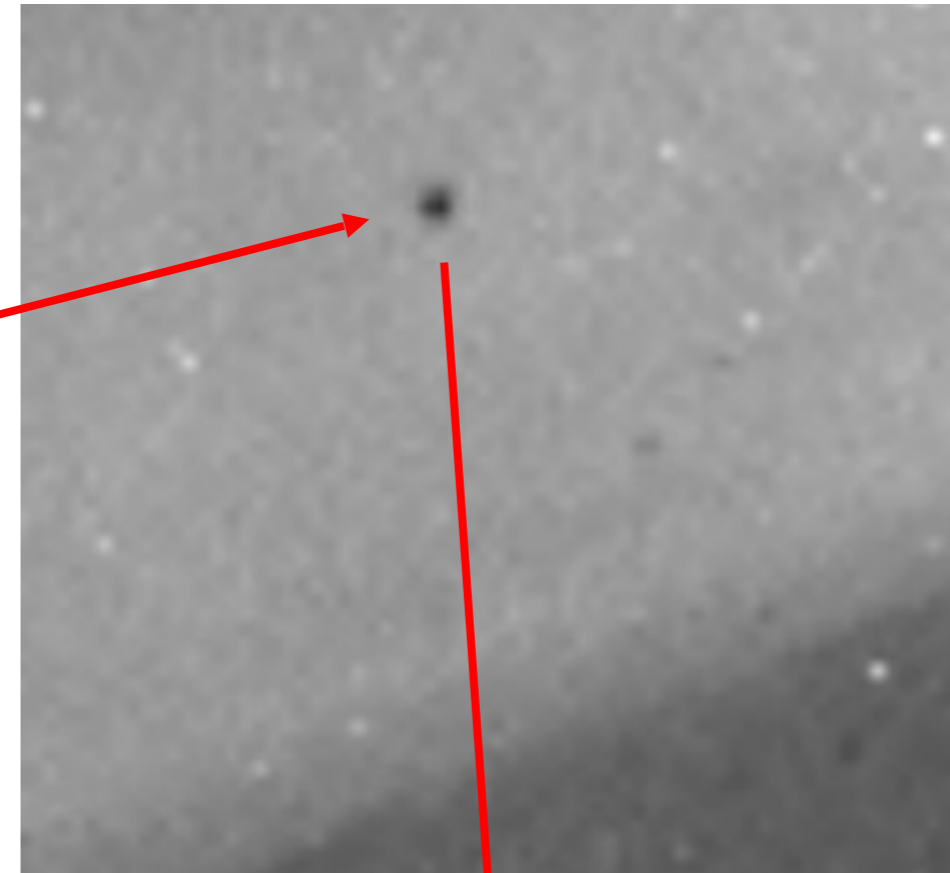
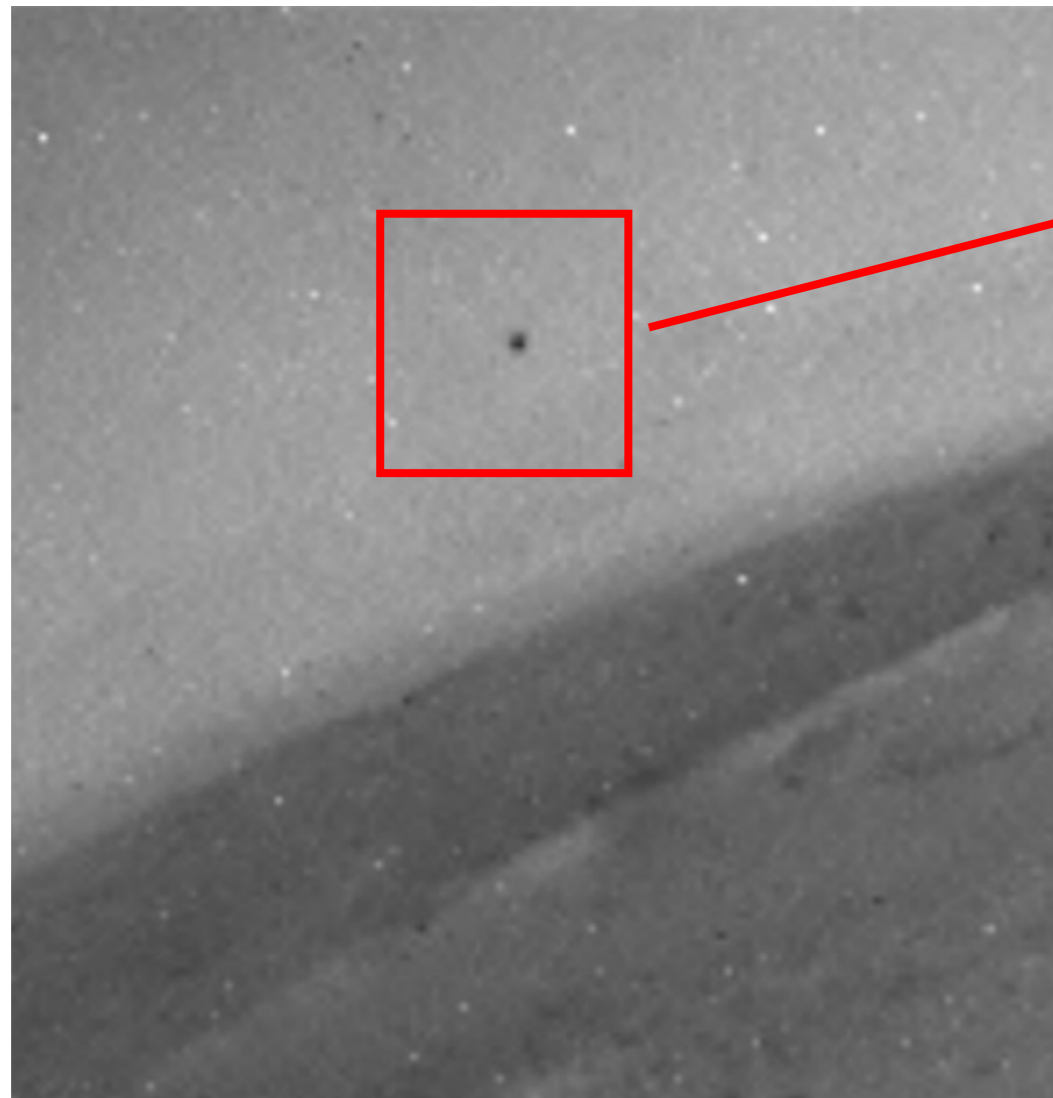


Circular  
profile

---

[http://marsmobile.jpl.nasa.gov/msl/multimedia/raw/?rawid=NRA\\_399807408EDR\\_F0030530NCAM00417M\\_&s=2](http://marsmobile.jpl.nasa.gov/msl/multimedia/raw/?rawid=NRA_399807408EDR_F0030530NCAM00417M_&s=2)

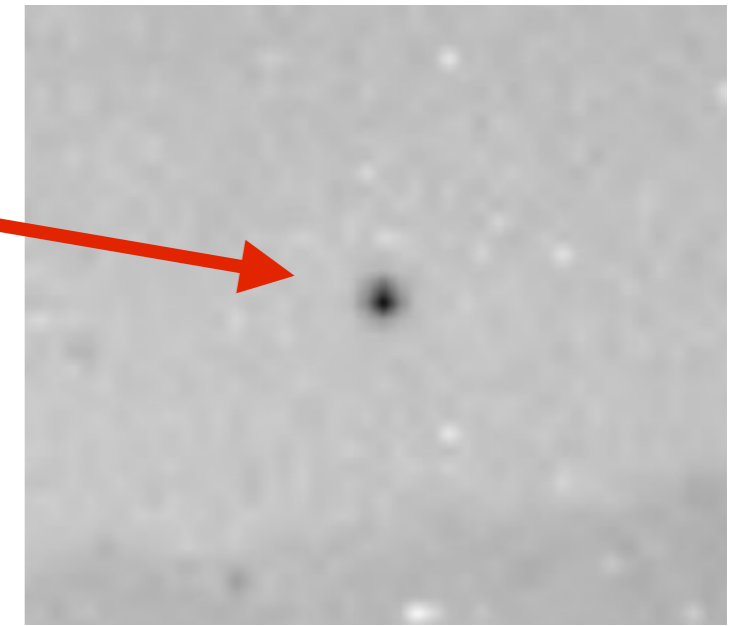
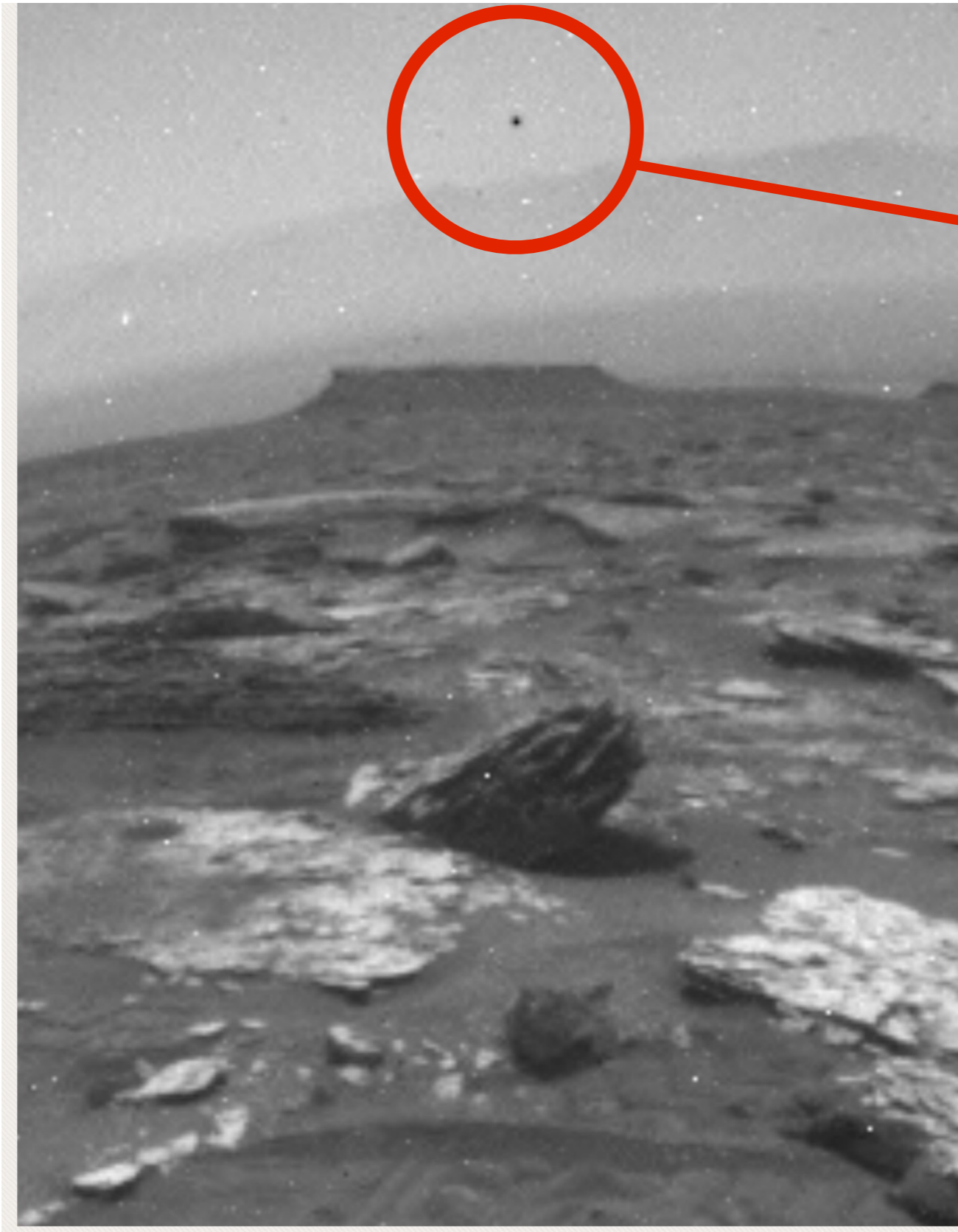
Aerial object?



Not a star or planet since not glowing  
above the faintly apparent mountain range

[http://mars.jpl.nasa.gov/msl-raw-images/proj/msl/redops/ods/surface/sol/00990/opgs/edr/rcam/RLB\\_485386540EDR\\_F0480876RHAZ00311M\\_.JPG](http://mars.jpl.nasa.gov/msl-raw-images/proj/msl/redops/ods/surface/sol/00990/opgs/edr/rcam/RLB_485386540EDR_F0480876RHAZ00311M_.JPG)

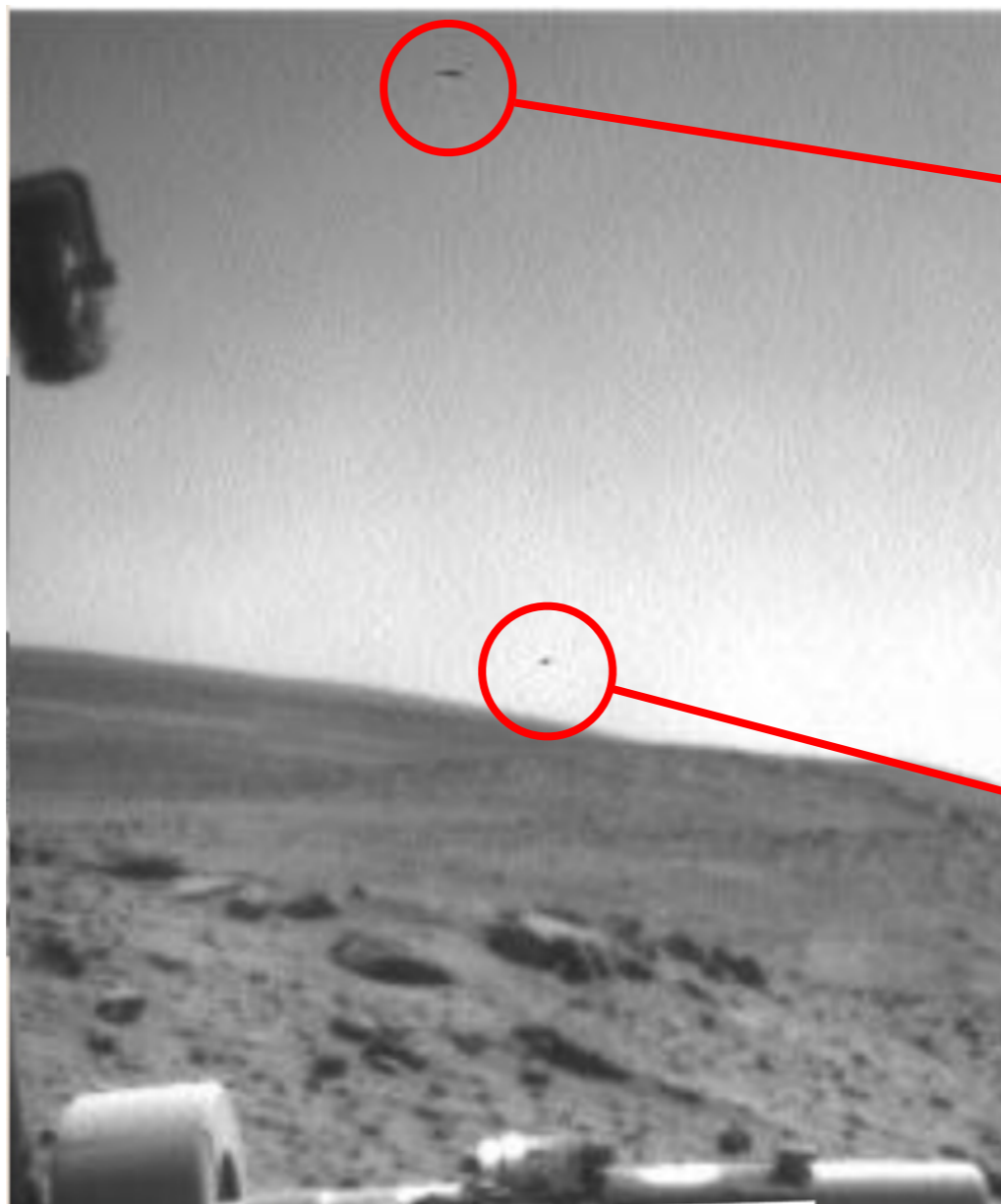
Circular  
profile



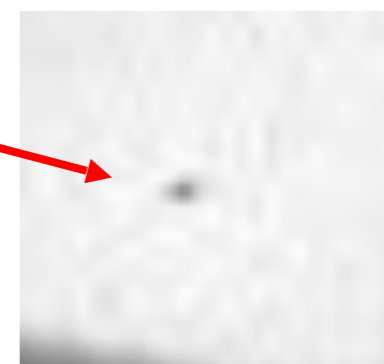
Circular  
profile

[http://mars.jpl.nasa.gov/msl-raw-images/proj/msl/redops/ods/surface/sol/01705/opgs/edr/rcam/RRB\\_548858551EDR\\_F0631636RHAZ00311M\\_.JPG](http://mars.jpl.nasa.gov/msl-raw-images/proj/msl/redops/ods/surface/sol/01705/opgs/edr/rcam/RRB_548858551EDR_F0631636RHAZ00311M_.JPG)





Disk profile



Oval profile

[HTTP://MARS.NASA.GOV/MER/GALLERY/ALL/2/F/  
2154/2F317591681EFFB2PGP1214LOM1.JPG](http://mars.nasa.gov/mer/gallery/all/2/f/2154/2f317591681effb2pgp1214lom1.jpg)

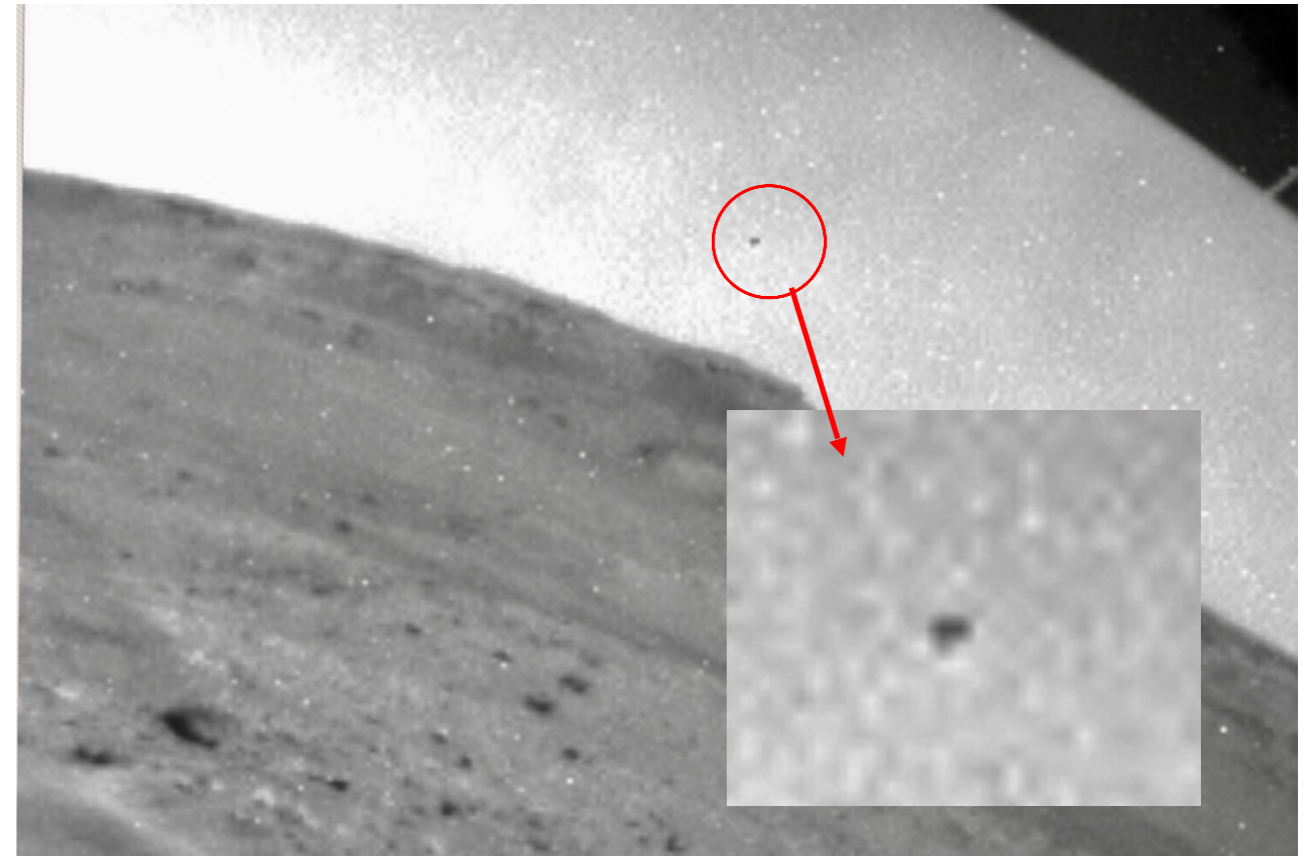




Disk profile

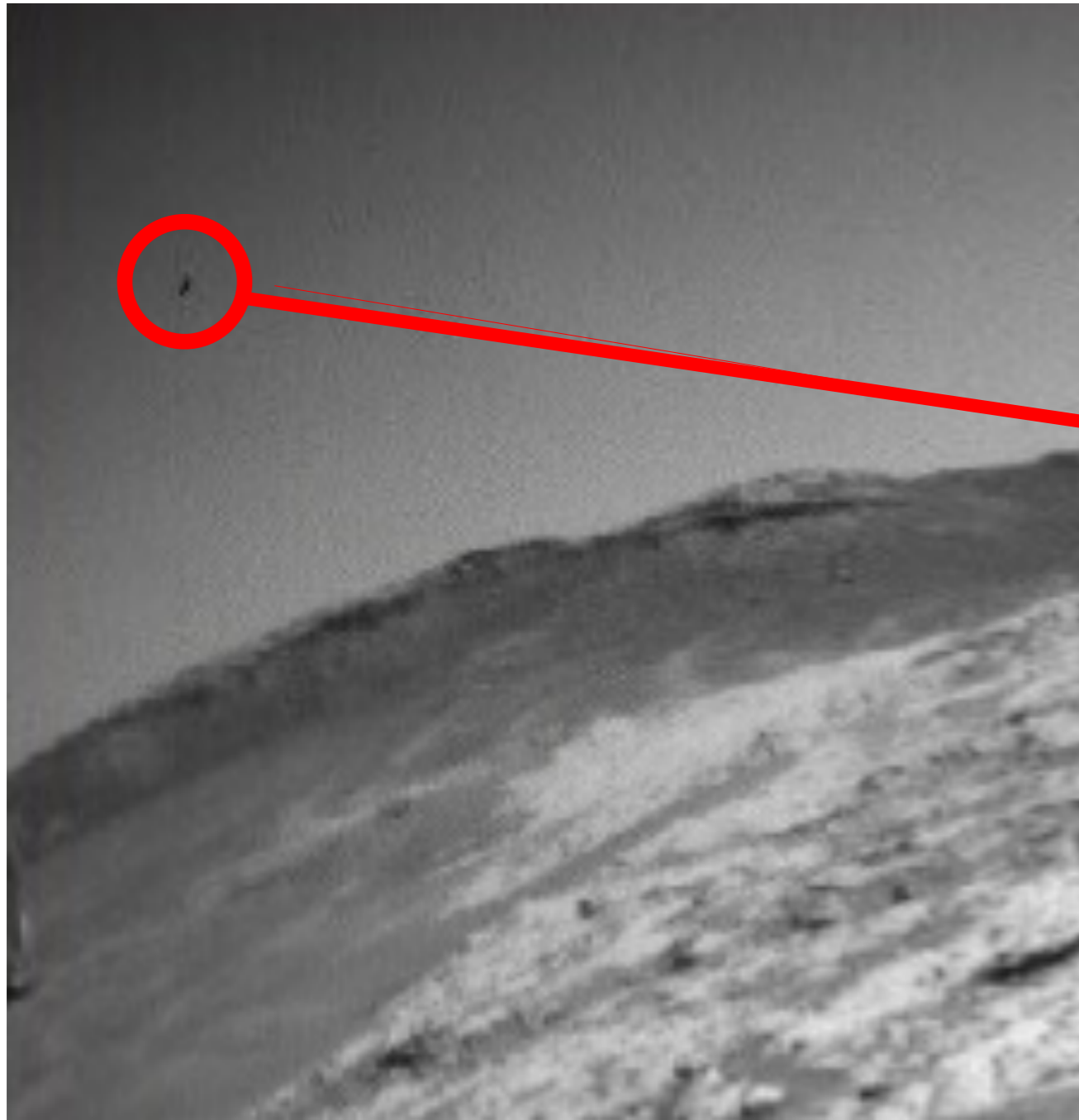
---

<http://mars.nasa.gov/mer/gallery/all/2/f/2165/2F318573331EFFB2ZJP1236L0M1.JPG>



[https://mars.jpl.nasa.gov/msl-raw-images/proj/msl/redops/ods/surface/sol/00973/opgs/edr/rcam/RRB\\_483872024EDR\\_F0470598RHAZ00323M\\_.JPG](https://mars.jpl.nasa.gov/msl-raw-images/proj/msl/redops/ods/surface/sol/00973/opgs/edr/rcam/RRB_483872024EDR_F0470598RHAZ00323M_.JPG)

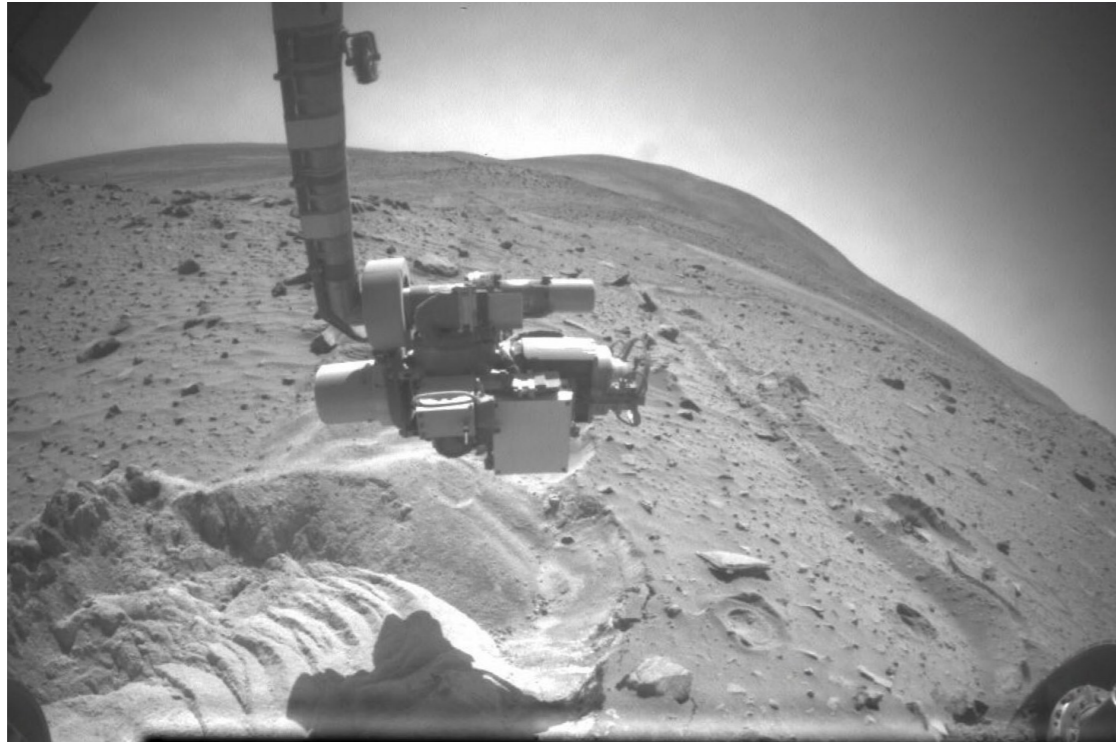
Triangular profile?



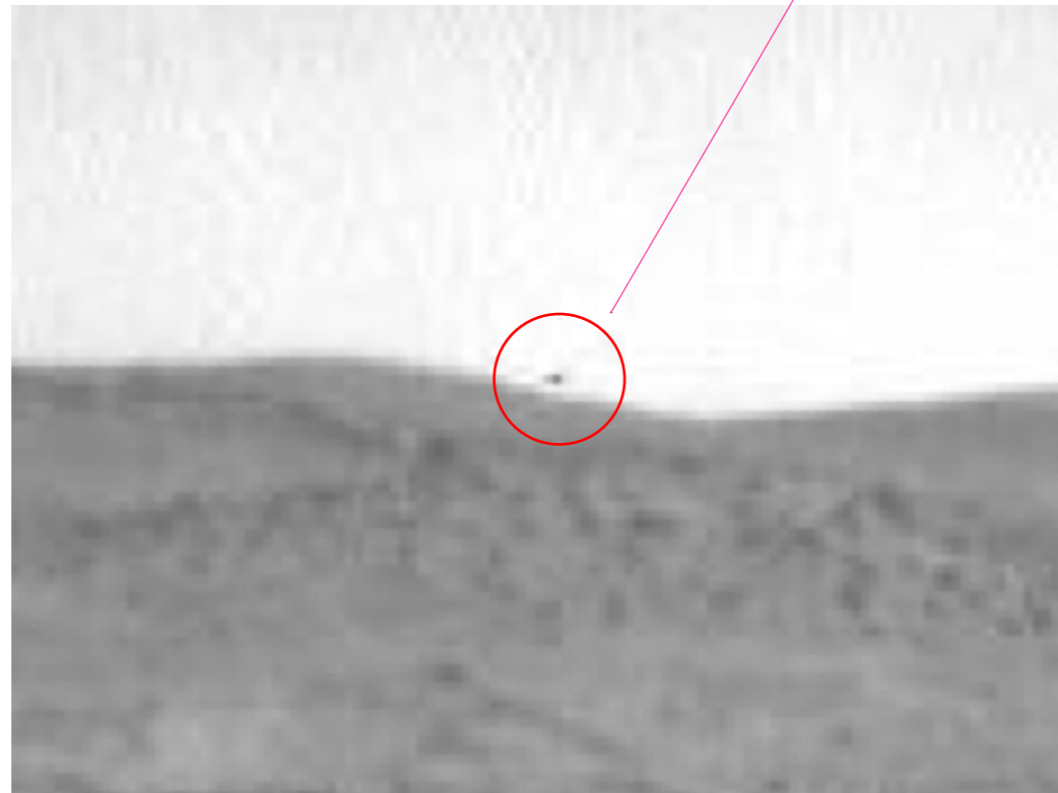
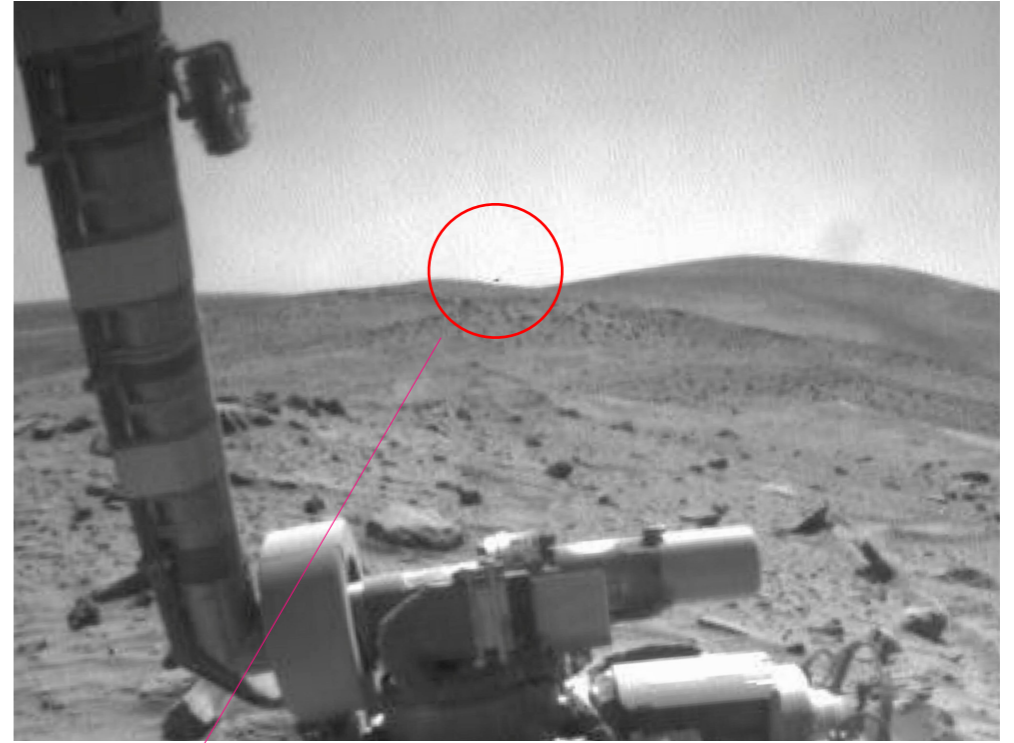
Dark central zone &  
possible wings?

[https://mars.jpl.nasa.gov/msl-raw-images/proj/msl/redops/ods/surface/sol/00893/opgs/edr/fcam/FRB\\_476773136EDR\\_F0450000FHAZ00323M\\_.JPG](https://mars.jpl.nasa.gov/msl-raw-images/proj/msl/redops/ods/surface/sol/00893/opgs/edr/fcam/FRB_476773136EDR_F0450000FHAZ00323M_.JPG)

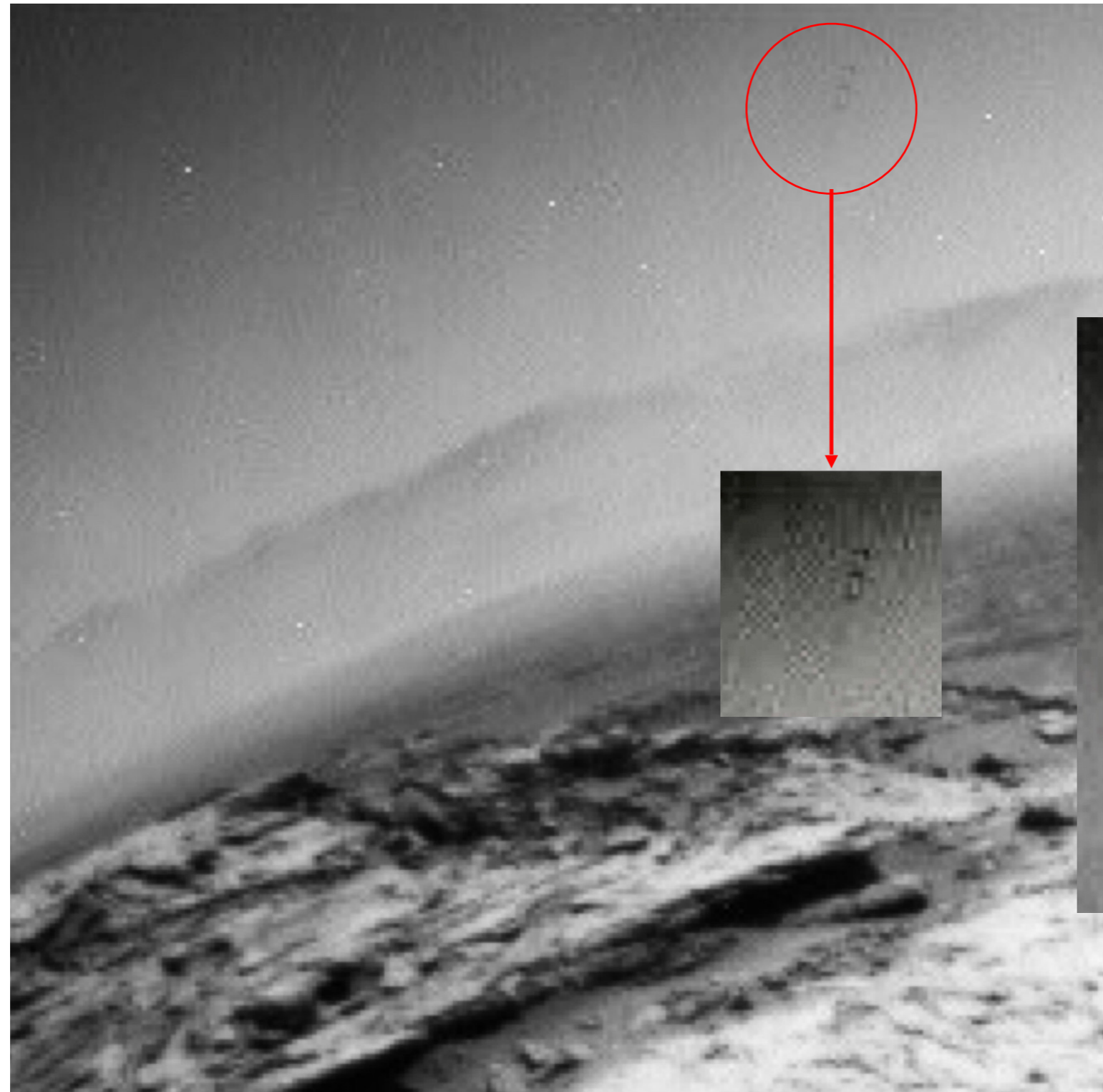




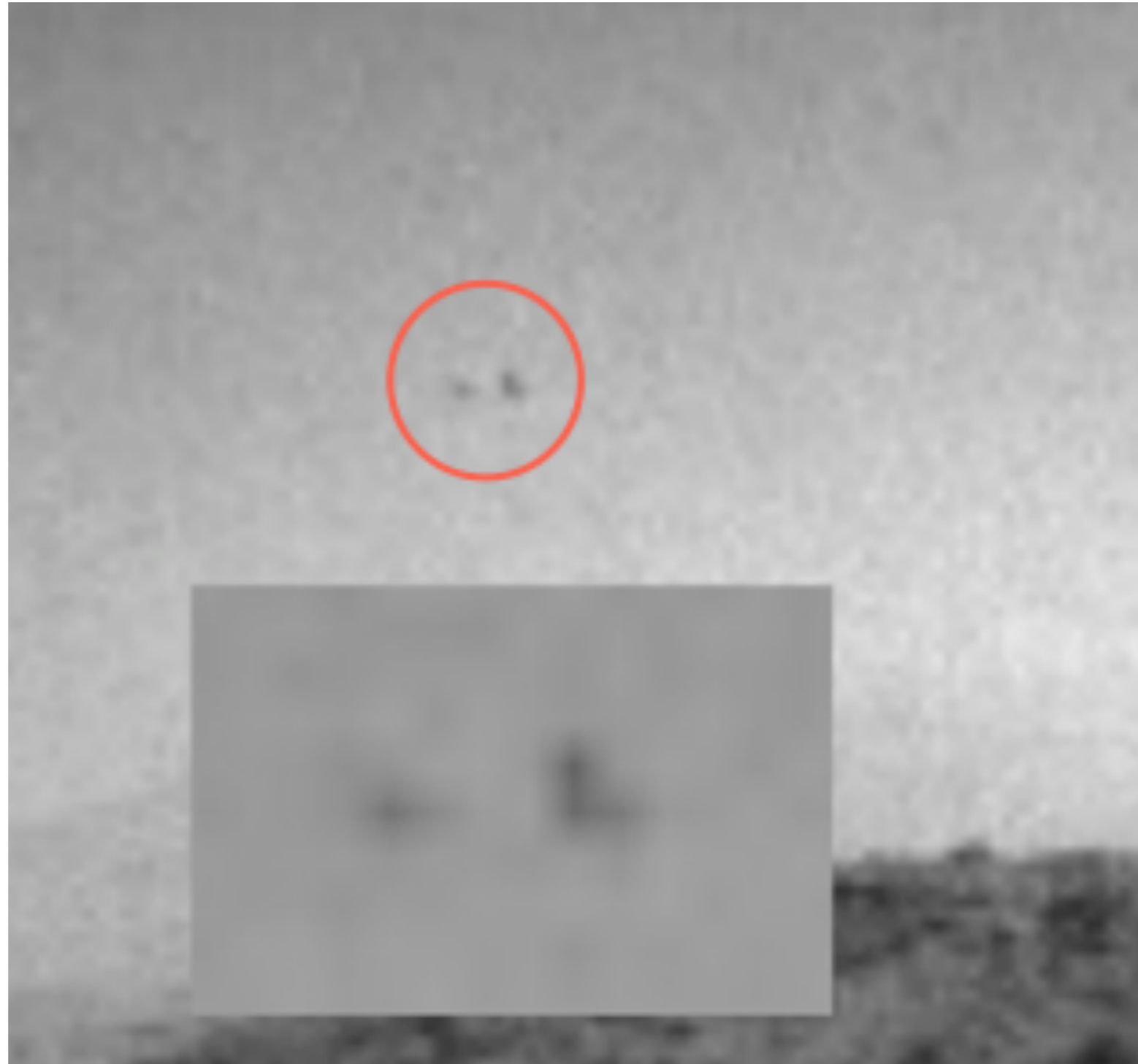
<https://mars.nasa.gov/mer/gallery/all/2/f/2150/2F317235854EFFB2IOP1254L0M1.JPG>



Dark central zone & possible wings?



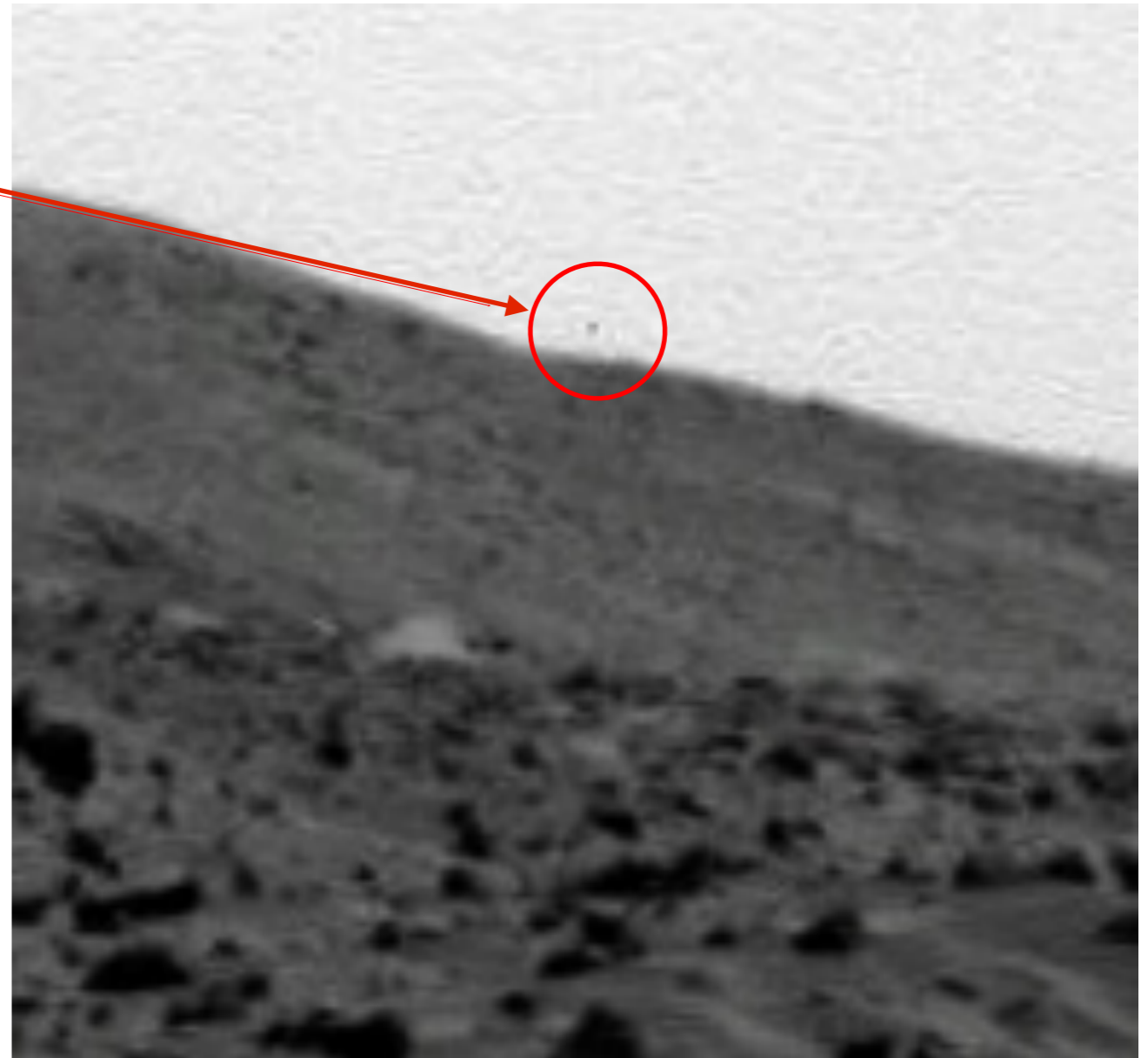
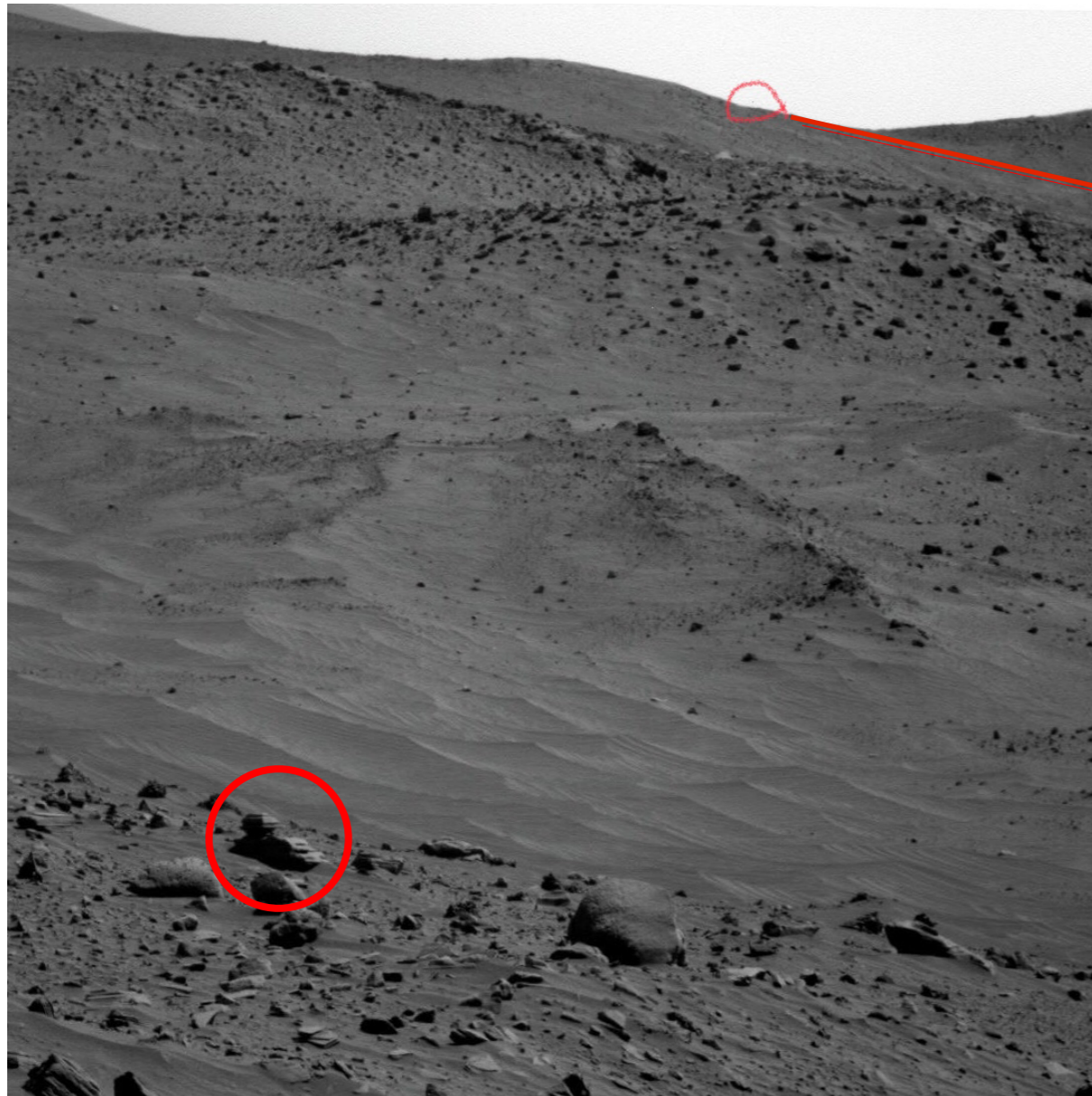
Winged shapes close together



Winged shapes close together

[https://mars.jpl.nasa.gov/msl-raw-images/proj/msl/redops/ods/surface/sol/02463/opgs/edr/rcam/RRB\\_616152329EDR\\_F0761786RHAZ00311M\\_.JPG](https://mars.jpl.nasa.gov/msl-raw-images/proj/msl/redops/ods/surface/sol/02463/opgs/edr/rcam/RRB_616152329EDR_F0761786RHAZ00311M_.JPG)





[HTTP://MARS.NASA.GOV/MER/GALLERY/ALL/2/P/2125/2P315012706EFFB2AUP2569L6M3.JPG](http://MARS.NASA.GOV/MER/GALLERY/ALL/2/P/2125/2P315012706EFFB2AUP2569L6M3.JPG)

Pixelated & unclear

The object circled in red in the lower left quadrant is shown in the next slide.





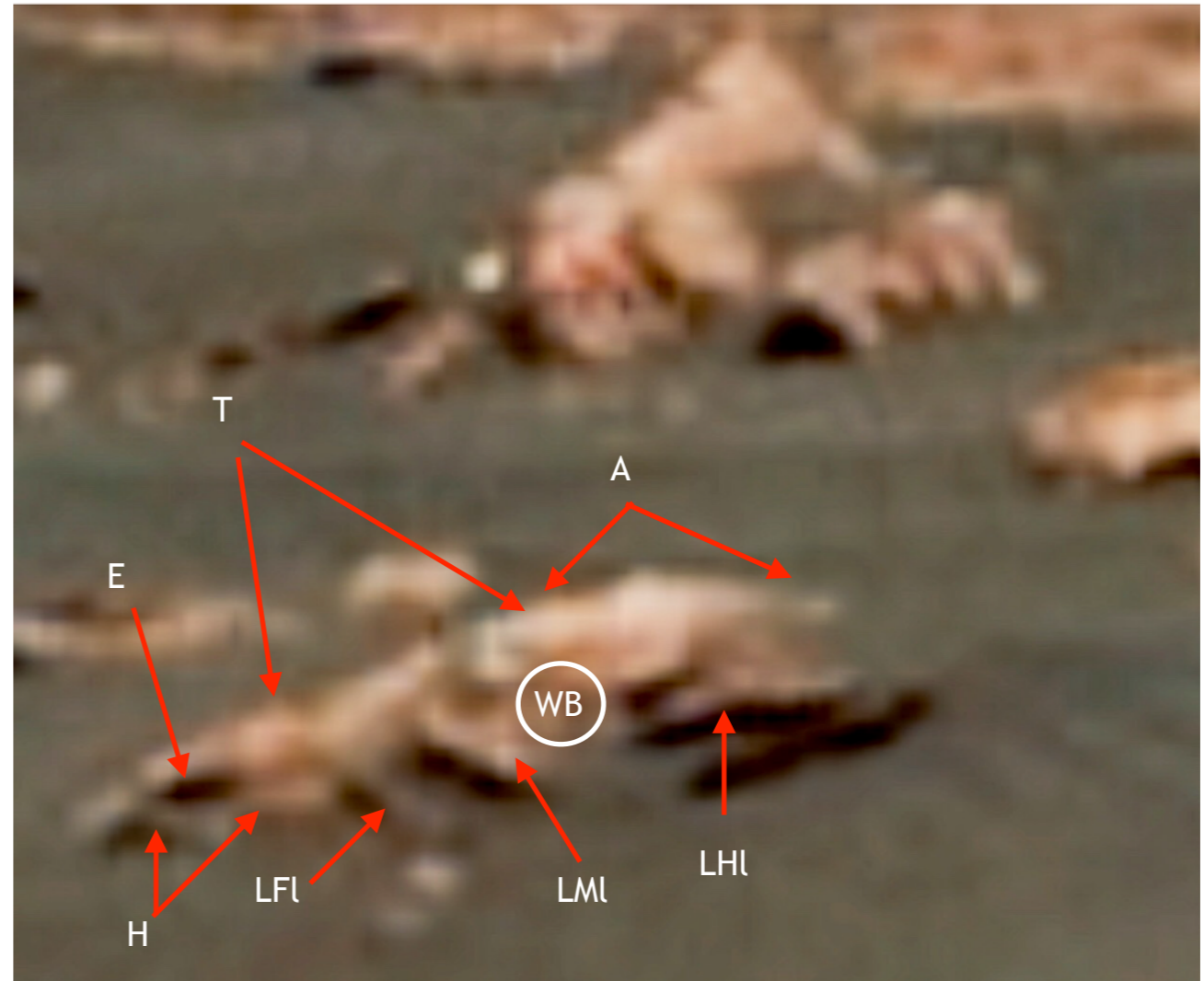
This object obviously isn't flying, but it does give credence to the idea that there are artificially constructed apparent vehicular objects on Mars.

[HTTP://MARS.NASA.GOV/MER/GALLERY/ALL/2/P/2125/2P315012706EFFB2AUP2569L6M3.JPG](http://mars.nasa.gov/mer/gallery/all/2/p/2125/2p315012706effb2aup2569l6m3.jpg)

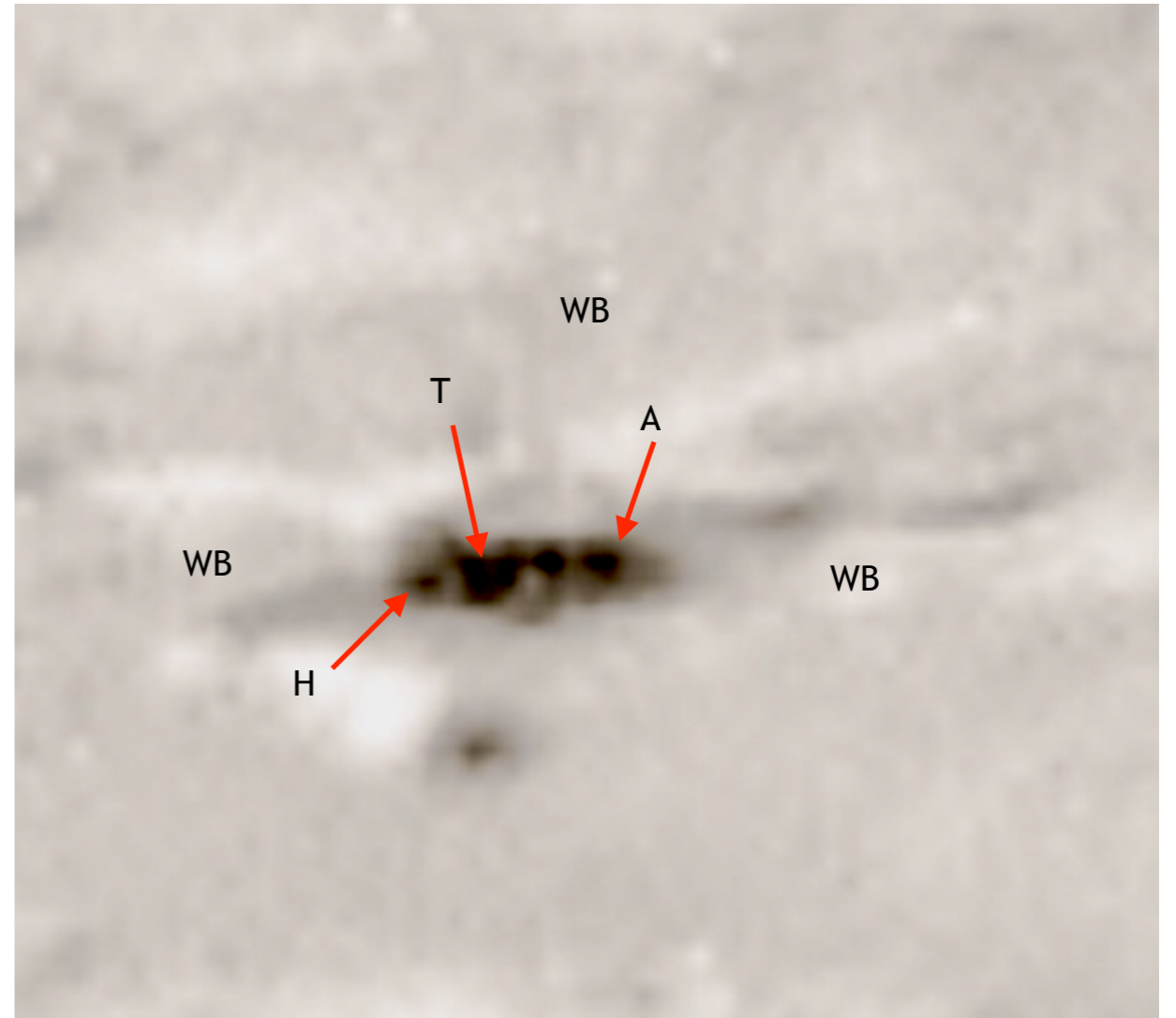
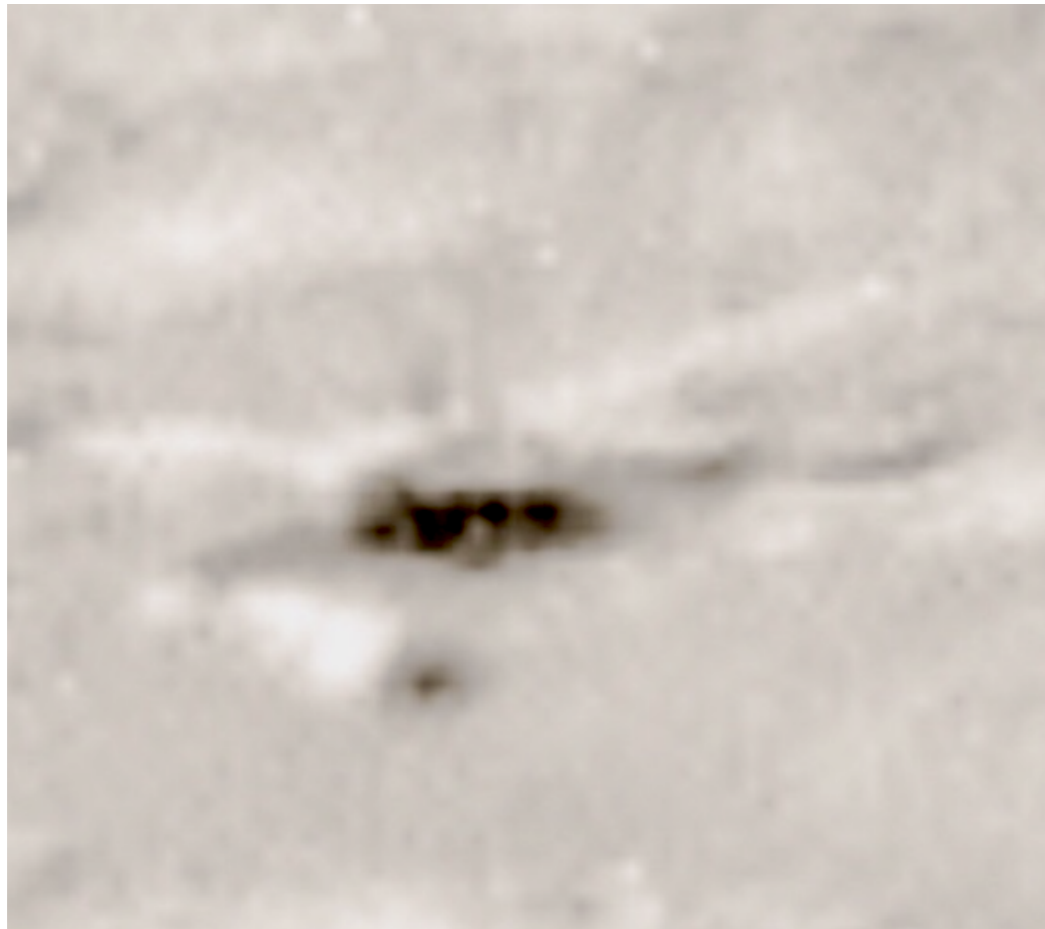
# Insect-like Flying Forms

# Background

- At least some, if not most, of the dark forms contrasting with the daytime sky are likely to be insect-like types. These insect-like forms are often difficult to see due to the fact they are in motion, e.g. when flying.
- It is common to see flying insect-like form bodies surrounded by a characteristic blur area caused moving wings.
- Insects typically have an overall Gestalt which makes them identifiable by an experienced eye. This is useful even in flying forms.



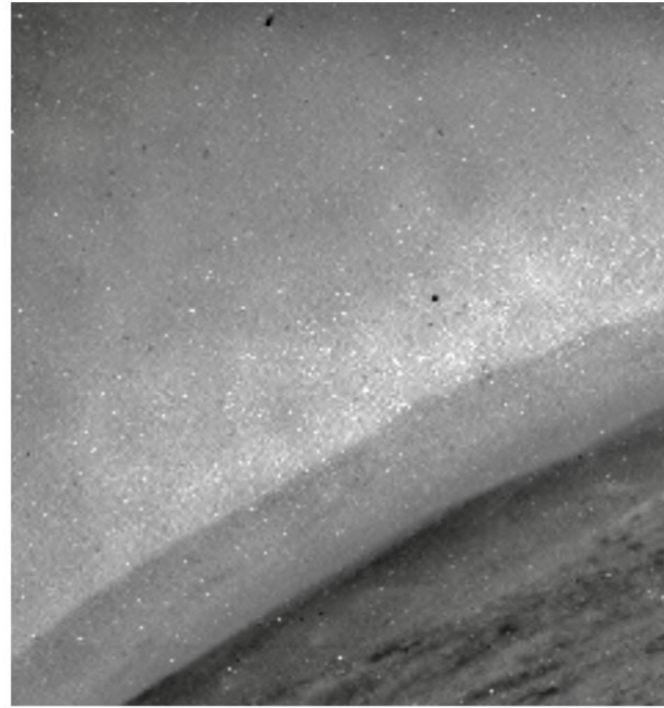
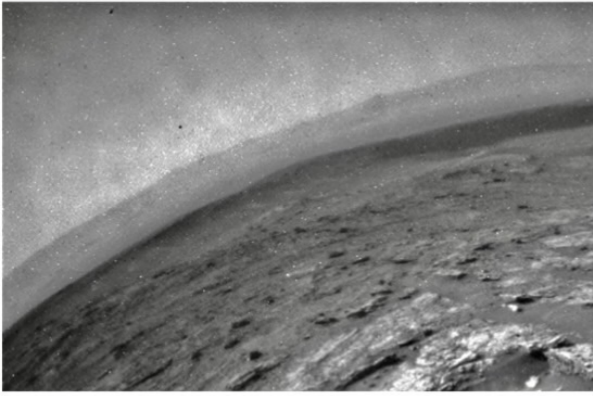
This image shows an two insect-like creatures flying. Their appearance is odd due to being in flight which results in a blurred appearance. A, abdomen; E, eye; H, head; LFI, left foreleg; LHI, left hidleg; LMI, left midleg; T, thorax; WB, wing blur.



Another insect-like form in flight. A, abdomen; H, head; T, thorax; WB, wing blur

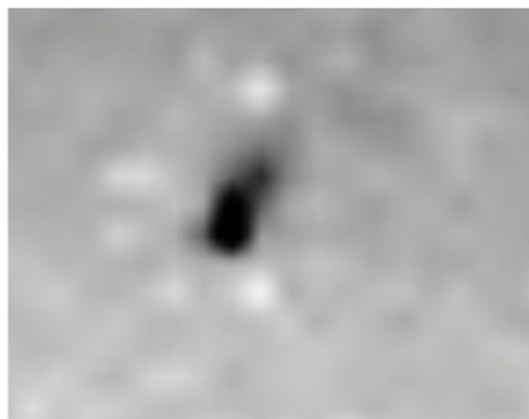
[https://mars.jpl.nasa.gov/msl-raw-images/proj/msl/redops/ods/surface/sol/02463/opgs/edr/rcam/RRB\\_616152329EDR\\_F0761786RHAZ00311M\\_.JPG](https://mars.jpl.nasa.gov/msl-raw-images/proj/msl/redops/ods/surface/sol/02463/opgs/edr/rcam/RRB_616152329EDR_F0761786RHAZ00311M_.JPG)





**Flight during crepuscular period**

**Silhouette against dimming sky**



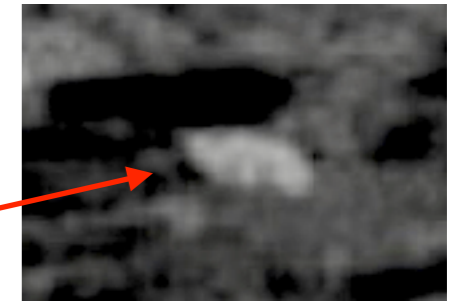
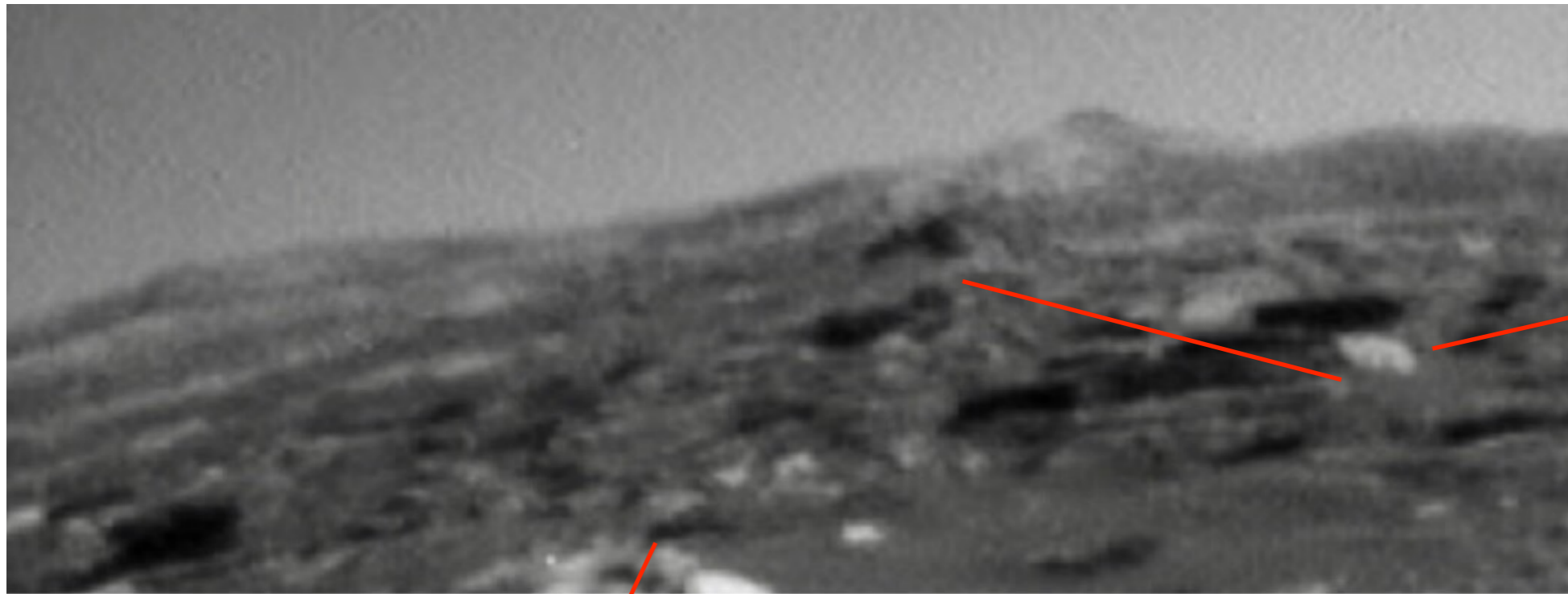
# Insect-like Forms Caught in Flight Sequence

- It is common to see flight paths of individual insect-like forms caught by the camera at different points during a flight.
- These are typically characterized by a relatively large image of an individual which tapers back over a distance as sequentially smaller and smaller images of the insect-like form.
- During these individual “flights” the wings can be seen in varying positions of wing movement, that is the wings may be elevated, depressed, or somewhere in between.

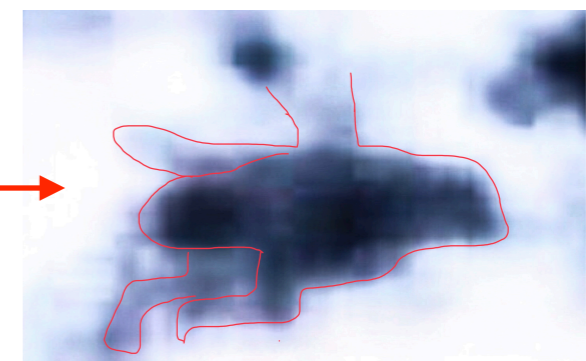
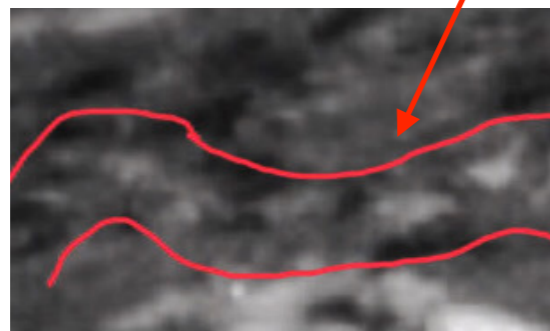
*Cetonia aurata*  
Rose Chafer,  
Public Domain





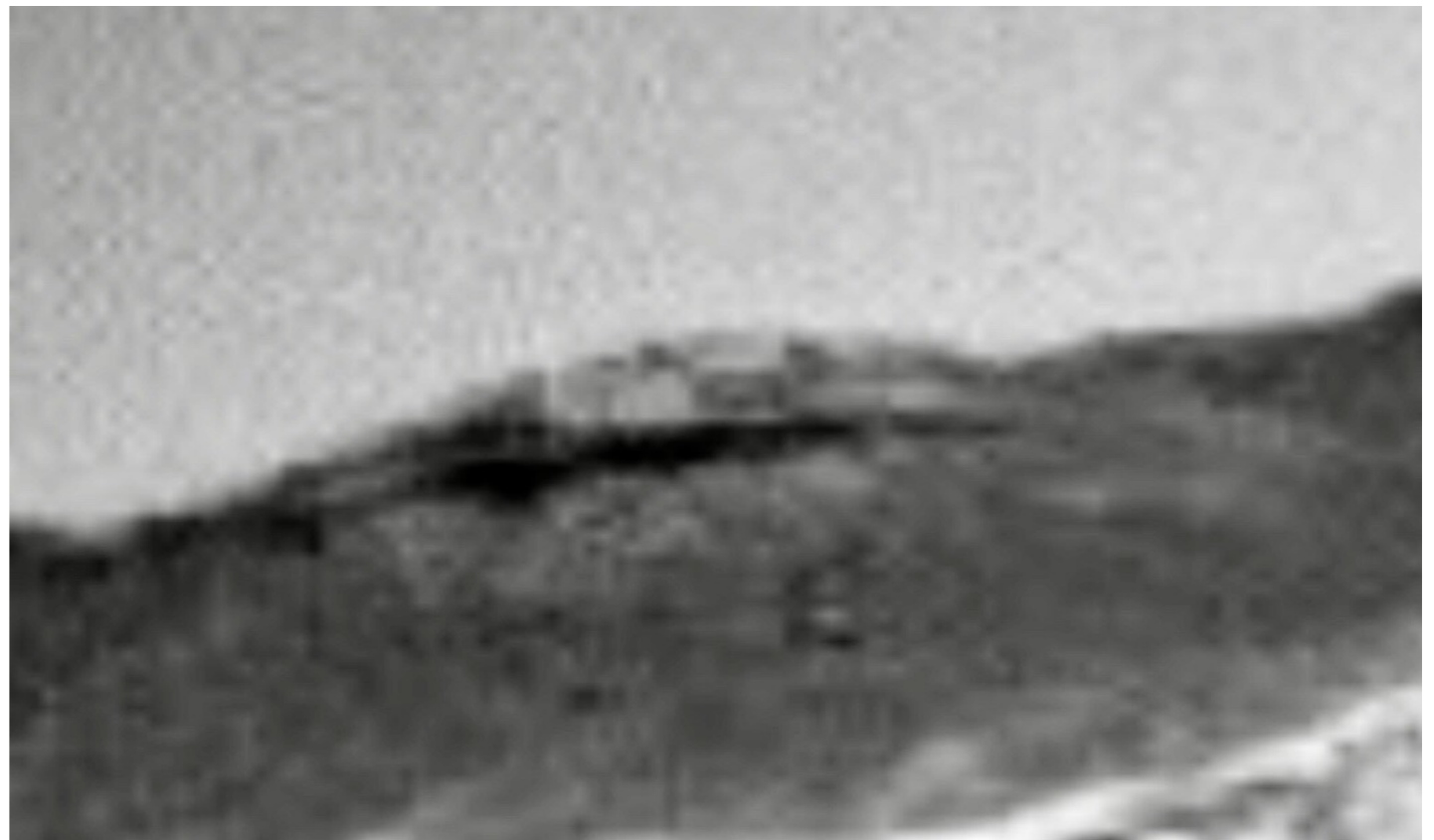
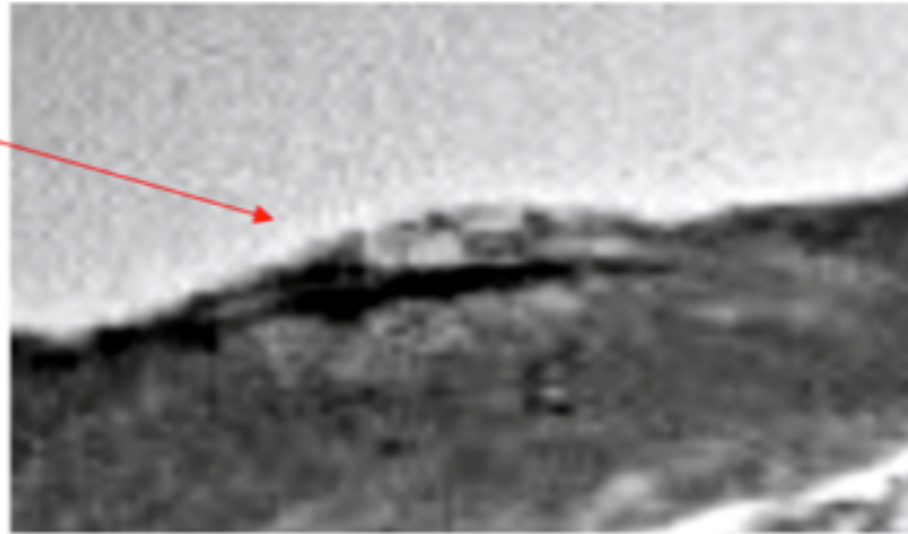
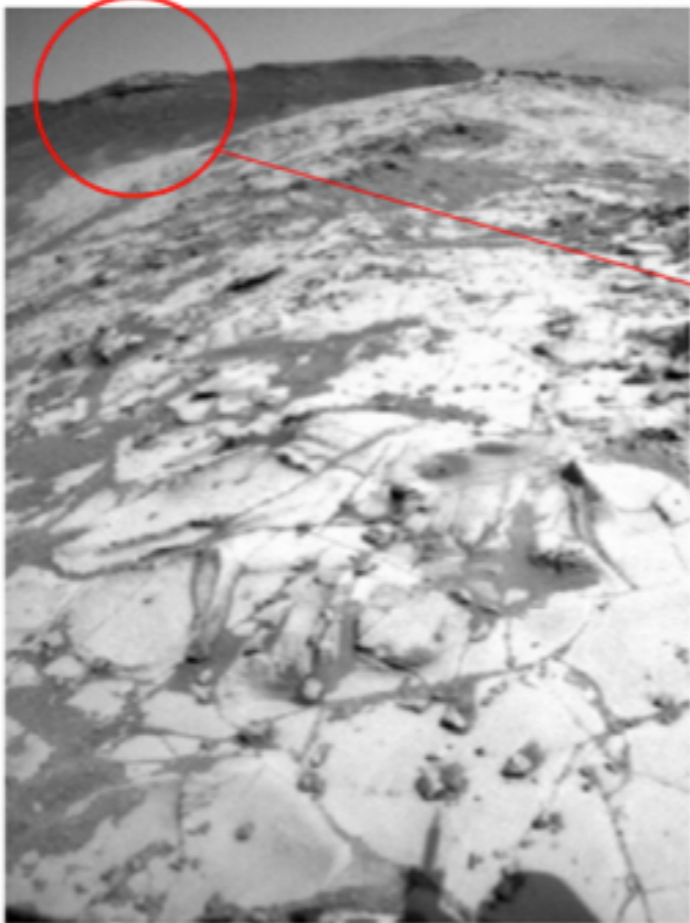


Several tracks of individual sequential flight positions can be seen in this image. Two are indicated below and to the right.



<http://mars.jpl.nasa.gov/msl-raw-images/proj/msl/redops/od/surface/sol/01715/opgs/edr/fcam/>  
FTR\_549756423FDR\_F0632086FHAZ00206M.JPG

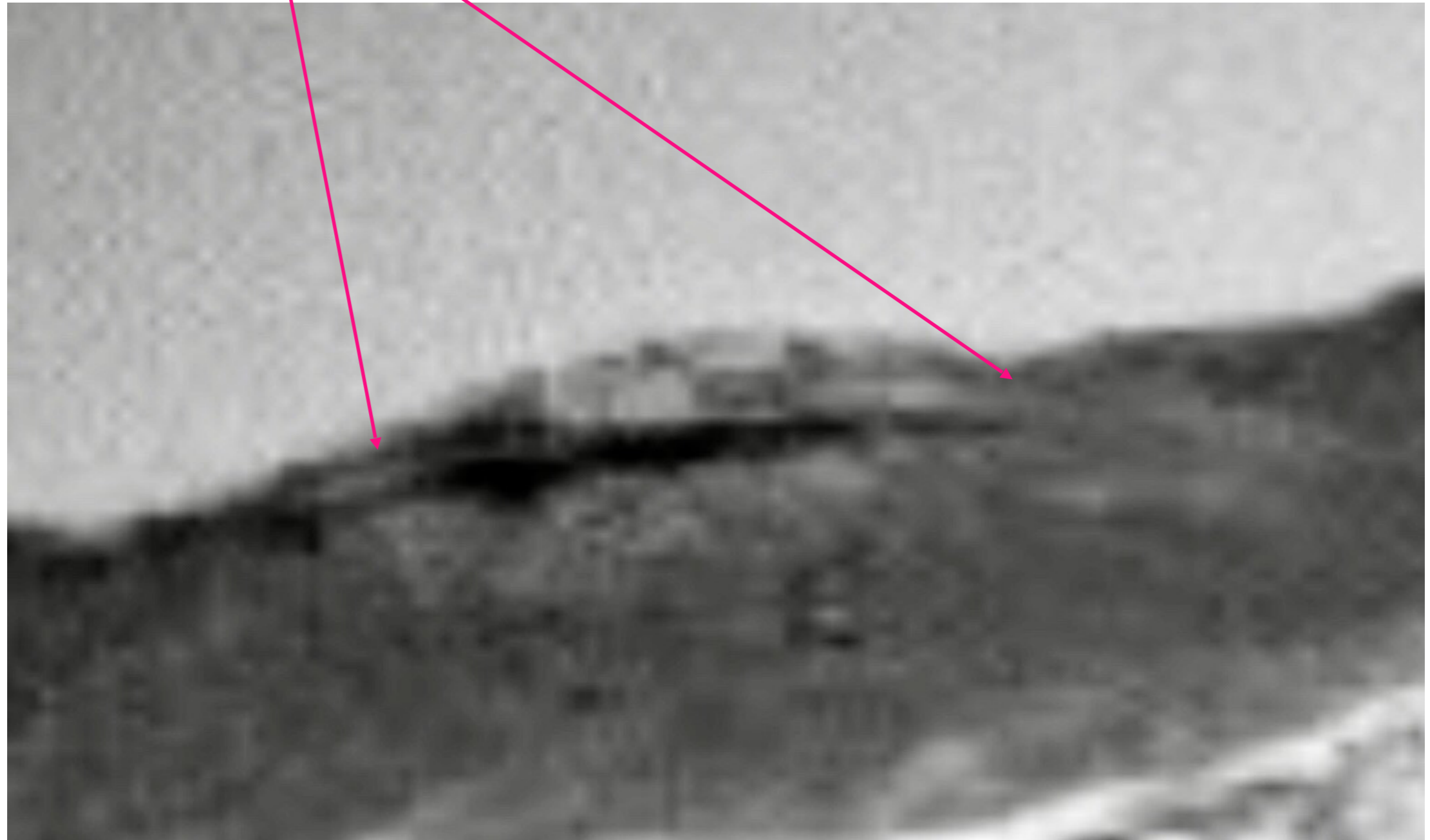
An artificial structure on the ground? Grounded aircraft?



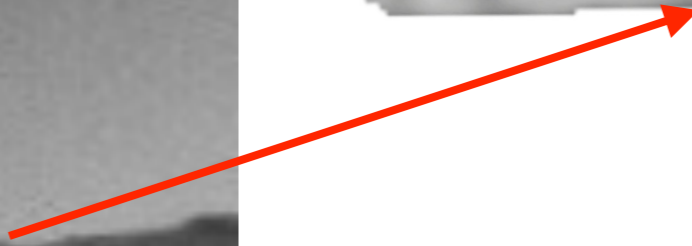
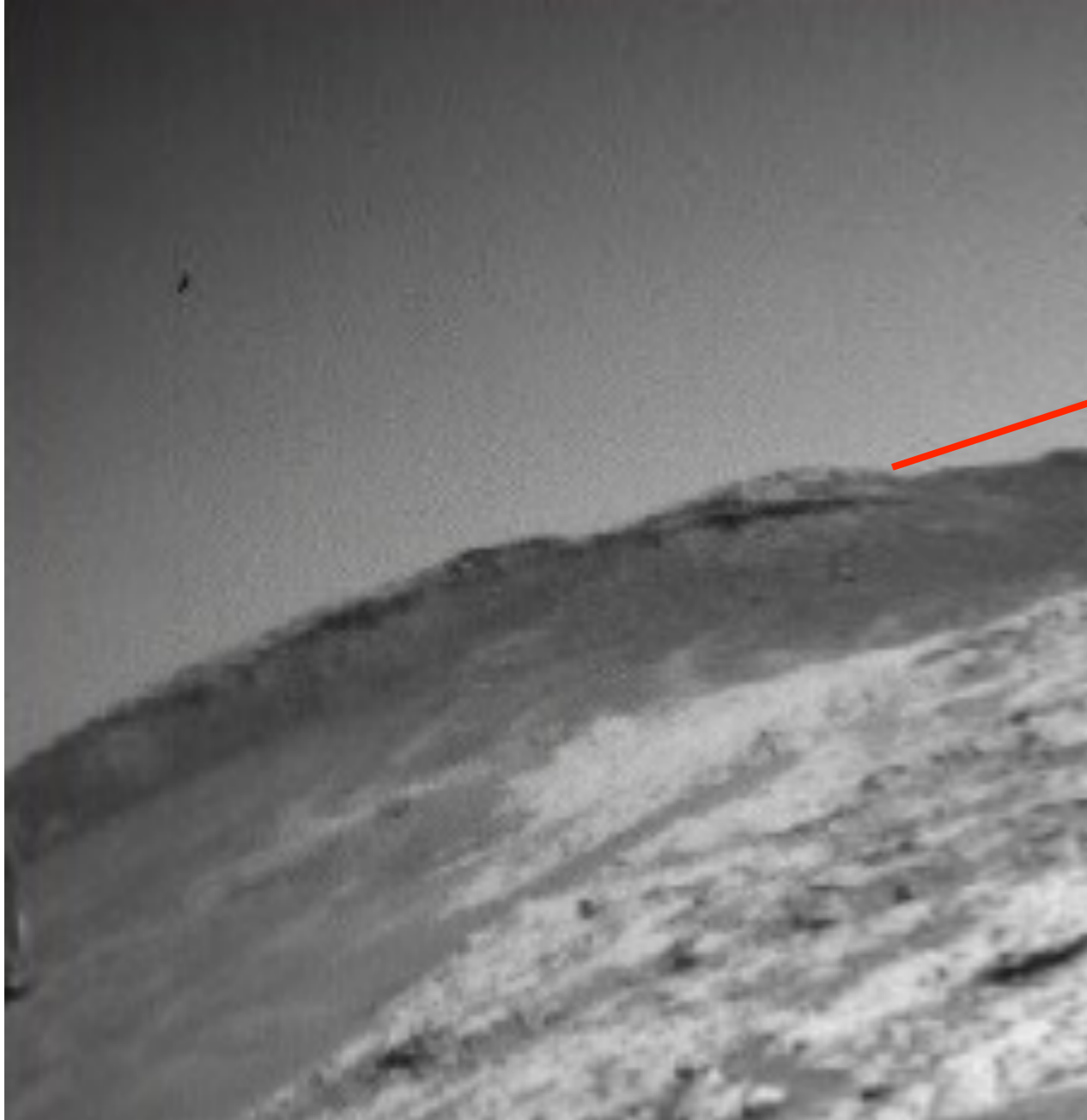
[https://mars.jpl.nasa.gov/msl-raw-images/proj/msl/redops/ods/surface/sol/00893/opgs/edr/fcam/FRB\\_476773136EDR\\_F0450000FHAZ00323M\\_.JPG](https://mars.jpl.nasa.gov/msl-raw-images/proj/msl/redops/ods/surface/sol/00893/opgs/edr/fcam/FRB_476773136EDR_F0450000FHAZ00323M_.JPG)

Appearance suggests  
grounded aerial craft?  
Angularity suggests  
stealth-like design.

Clearly in contrast with  
surrounding geological forms







# Mysterious Glowing Objects



[http://mars.jpl.nasa.gov/msl-raw-images/proj/msl/redops/ods/surface/sol/00000/opgs/edr/rcam/RLA\\_397504876EDR\\_F0010000AUT\\_04096M\\_.JPG](http://mars.jpl.nasa.gov/msl-raw-images/proj/msl/redops/ods/surface/sol/00000/opgs/edr/rcam/RLA_397504876EDR_F0010000AUT_04096M_.JPG)





[http://mars.jpl.nasa.gov/msl-raw-images/proj/msl/redops/ods/surface/sol/00000/opgs/edr/rcam/RLA\\_397504876EDR\\_F0010000AUT\\_04096M\\_.JPG](http://mars.jpl.nasa.gov/msl-raw-images/proj/msl/redops/ods/surface/sol/00000/opgs/edr/rcam/RLA_397504876EDR_F0010000AUT_04096M_.JPG)

Aerial object? No other  
dark spots present.

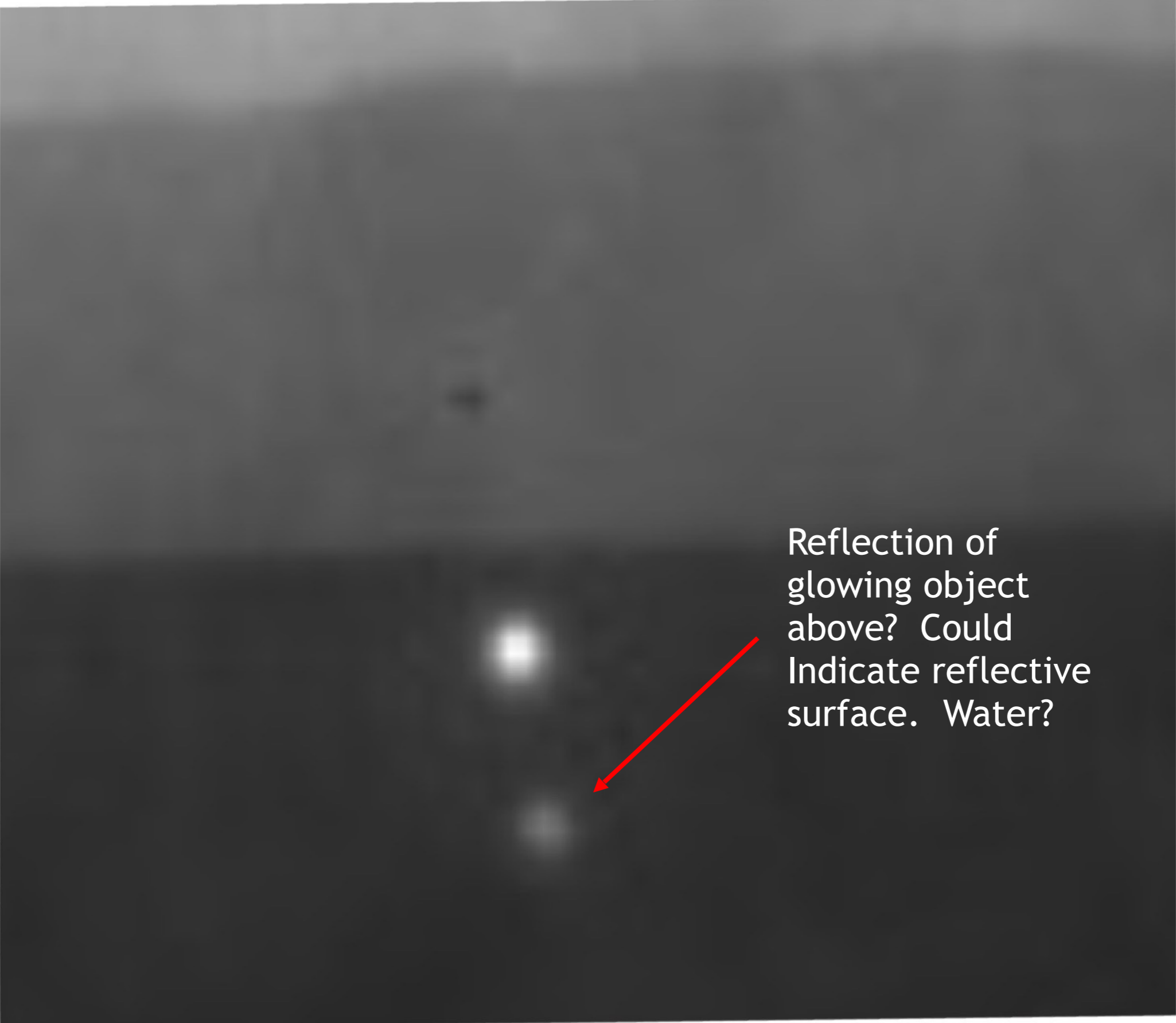


Glowing object

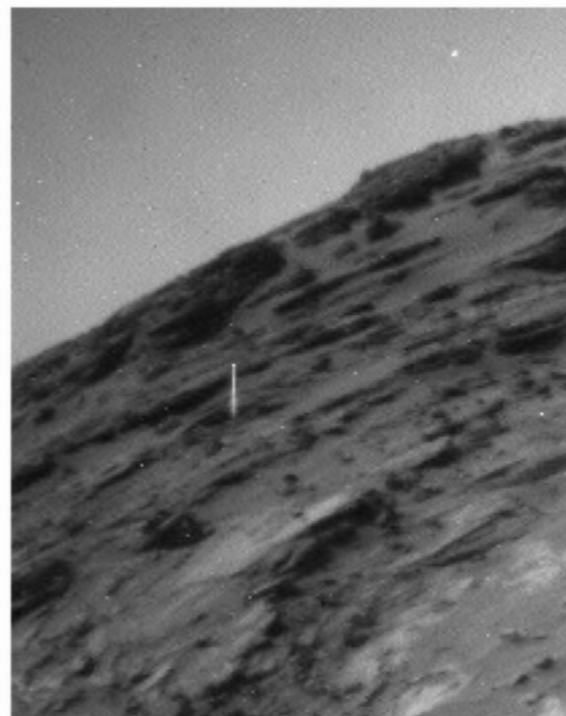
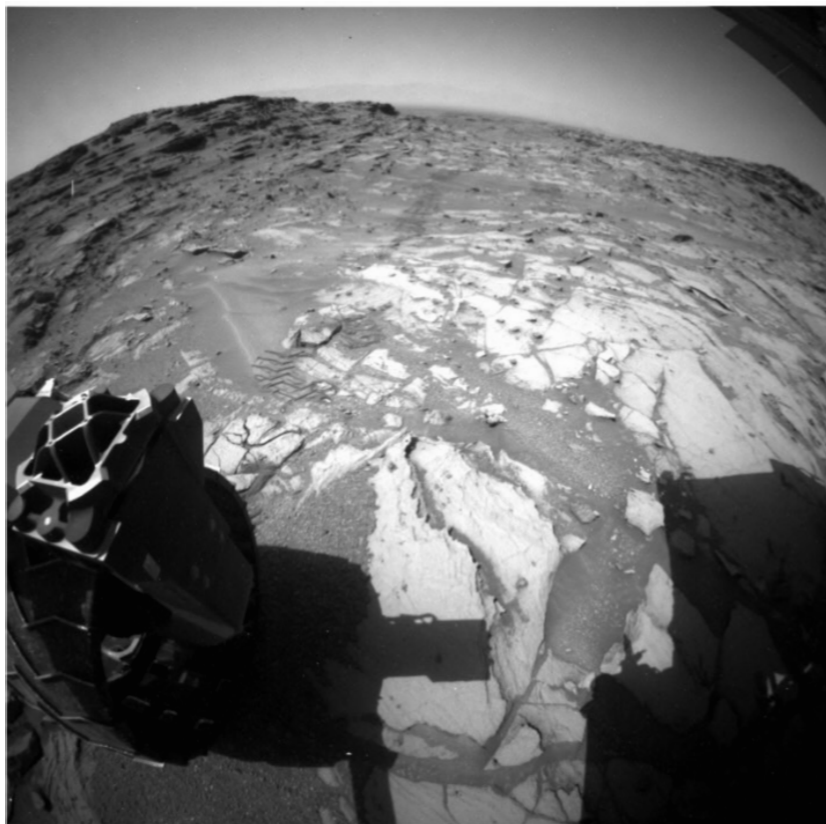


Object (?) with  
weaker glow



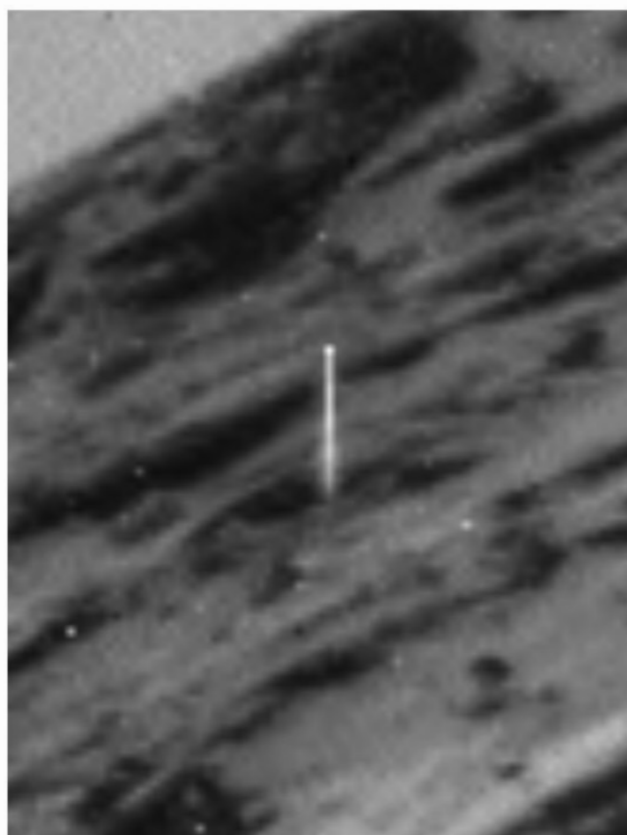


Reflection of  
glowing object  
above? Could  
Indicate reflective  
surface. Water?



Glowing object  
appearing to be coming  
out of the ground?

What is it and what  
could it mean?



[https://mars.jpl.nasa.gov/msl-raw-images/proj/msl/redops/ods/surface/sol/01072/opgs/edr/rcam/RLB\\_492664101EDR\\_F0490294RHAZ00311M\\_.JPG](https://mars.jpl.nasa.gov/msl-raw-images/proj/msl/redops/ods/surface/sol/01072/opgs/edr/rcam/RLB_492664101EDR_F0490294RHAZ00311M_.JPG)



# Conclusions & Discussion

- Examples of spherical, disc-shaped, chevron-shaped, and triangular entities in the skies of Mars have been identified here.
- It is unclear what these “aerial” forms are, but they are common in the NASA-JPL images. They could be bonafide aerial craft, organic forms, or such things as ink marks or damaged pixels.
- Evidence supports the idea that flying insect-like creatures are among the forms, perhaps most, seen in contrast with the Martian sky.

- A clearly artificial structure can be seen on top of a distant hill.
- By virtue of its streamlined appearance along with angular plates resembling stealth design, one can interpret the structure on the top of the hill as artificial, and as a possible aerial craft.
- This idea doesn't seem far-fetched when one considers the many trips space craft from Earth have made to Mars orbit, and landing on the surface in the case of the surface rovers.
- The presence of likely artificial structures, aerial or otherwise, that is, the possible grounded aircraft and what resembles a track vehicle, implies the past or current presence of intelligent life on Mars, whether as part of an established civilization or as visitors.
- This idea applies both to the Curiosity Rover and to the putative craft.