

EYES
ONLY
ACCESS

DEFENSE INTELLIGENCE AGENCY
OFFICE OF COUNTERINTELLIGENCE
WASHINGTON, D.C. 20333

EYES
ONLY
ACCESS



THIS IS A SECURITY COVER SHEET

• CLASSIFIED •

**ULTRA
TOP SECRET**

NO DISSEMINATION OR DECLASSIFICATION

WHATEVER THIS DOCUMENT CONTAINS INFORMATION AFFECTING THE NATIONAL DEFENSE AND SECURITY OF THE UNITED STATES OF AMERICA, WITHIN THE MEANING OF THE ESPIONAGE ACT, 50 U.S.C., 31 AND 32, AS AMENDED, ITS TRANSMISSION OR THE REVELATION OF ITS CONTENTS, IN ANY MANNER, TO ANY UNAUTHORIZED PERSONS IS PROHIBITED BY LAW. REPRODUCTION IN ANY FORM, OR THE TAKING OF WRITTEN OR MECHANICALLY TRANSCRIBED NOTES IS STRICTLY FORBIDDEN.

EYES
ONLY
ACCESS

READ-AND-DESTROY

EYES
ONLY
ACCESS

TOP SECRET

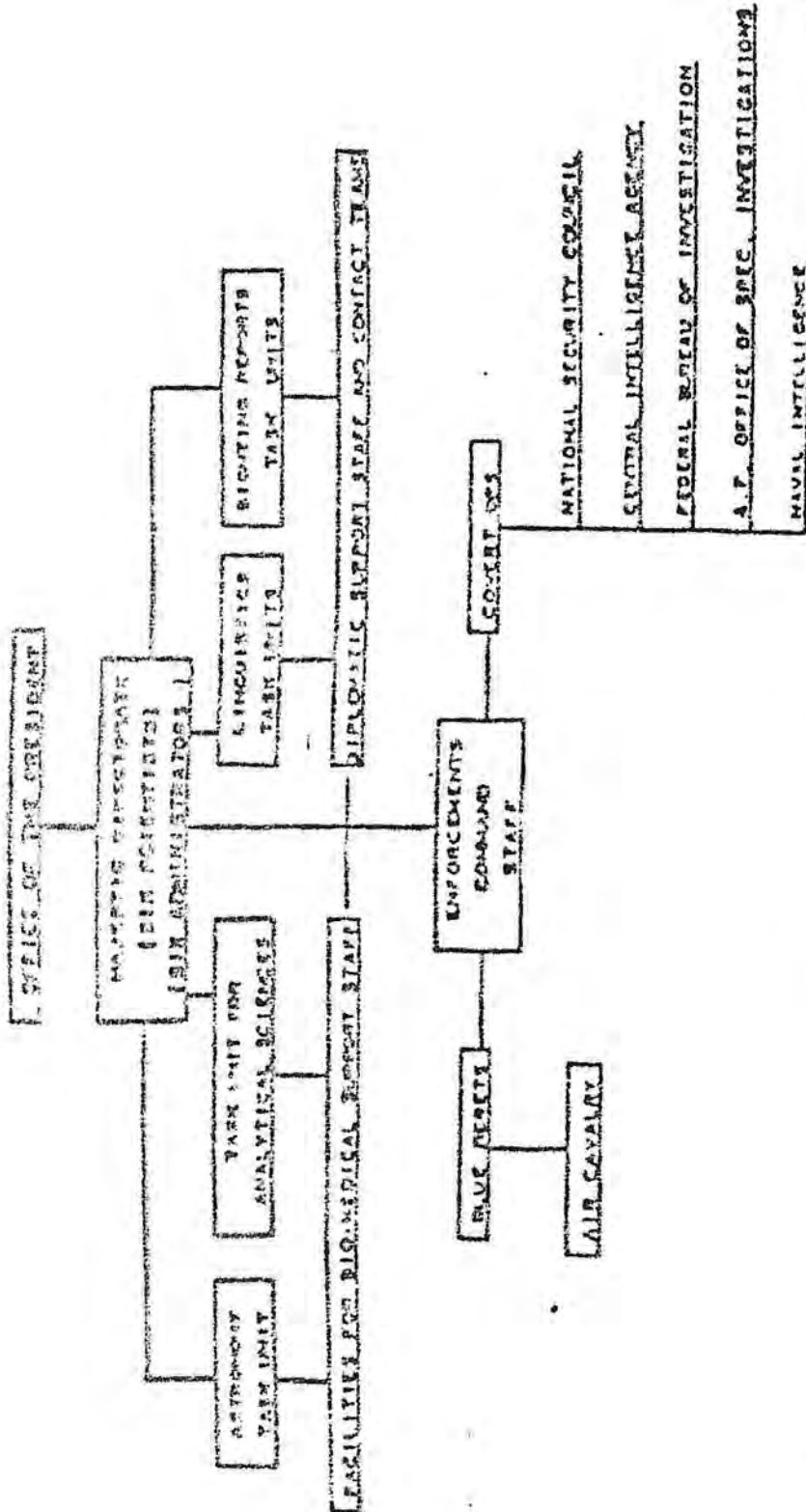
SECURITY CLASSIFICATION (OTHER DATA UNCLASSIFIED)

REPORT DOCUMENTATION PAGE		ATLAS (FOR FORM 100)
1. REPORT NUMBER 405389	2. ACQUISITION NO. T-39 EXEMPT	3. ORIGINATING AGENCY NO. MJ-12-729
4. TITLE AND SUBTITLES Assessment of the Situation/ Statement of Position on Unidentified Flying Objects		5. REPORT NUMBER MJ-12-729
7. AUTHOR(S) CLASSIFIED		8. CONTRACT OR ORDER NO. 405389
9. PERFORMING ORGANIZATION NAME AND ADDRESS Defense Intelligence Agency Office of Counterintelligence Washington, D.C. 20535		10. PROGRAM ELEMENT, PROJECT, REPORT NUMBER 405389
11. CONTROLLING OFFICE NAME AND ADDRESS Operation Majestic/MJ-1 ADDRESS CLASSIFIED		12. REPORT DATE 08 JAN 1969
14. MONITORING AGENCY NAME AND ADDRESS OFFICE OF THE PRESIDENT		13. DECLASSIFICATION SCHEDULE <input type="checkbox"/> YES <input type="checkbox"/> NO DOWNGRADING DATA T-39 EXEMPT
16. DISTRIBUTION STATEMENT OF ABSTRACT (IF DIFFERENT FROM 17) NONE. NO DISSEMINATION/DISTRIBUTION (EXC. ONLY CLASSIFIED)		
17. DISTRIBUTION STATEMENT OF REPORT DO NOT DUPLICATE		
18. SUPPLEMENTARY NOTES CLASSIFIED		
19. KEY WORDS (CONTINUE ON REVERSE AND IDENTIFY BY BLOCK NUMBER) CLASSIFIED		
20. ABSTRACT (CONTINUE ON REVERSE AND IDENTIFY BY BLOCK NUMBER) CLASSIFIED		

SECURITY CLASSIFICATION

TOP SECRET

AN ORGANIZATIONAL STUDY OF EDUCATION MAJORITY



SECTION A: FIGURE 11

DO NOT DUPLICATE

:TOP SECRET:

EYES ONLY

EYES ONLY

HISTORICAL PRECEDENTS

AT

**ROSVELL, NEW MEXICO
(07 JULY, 1947)**

SECTION B

(6 pages)

AREA REPORT NUMBER 100-100

EYES ONLY

EYES ONLY

DO NOT DUPLICATE

TOP SECRET

REPORT DOCUMENTATION PAGE
CONTINUED

READ INSTRUCTIONS
BEFORE COMPLETING FORM

CONTINUE WITH BLOCK NUMBER REFERENCE (FROM OTHER SIDE)

CLASSIFIED

DD FORM 89 1473 PREVIOUS EDITIONS OBSOLETE
DEFENSE DOCUMENTATION CENTER

1949

1949

DISCONTINUED
 TYPE 1001
 DDC TAB
 UNANNOUNCED
 JUSTIFICATION PARIC-12
!! IRA TOP SECRET CLEARANCE
REQUIRED RE: WHITE HOUSE!!
PHI Mance

AVAILABILITY-DISTRIBUTION CODES
 AVAILABILITY _____
 DISTRIBUTION WONE WONE WONE
405384
 SPECIAL CODE _____

* TOP SECRET *

NO DISSEMINATION OR DECLASSIFICATION

PRELIMINARY BRIEFINGS

(ENTRY-LEVEL)

FOR

01 JANUARY 1959

ON:

OPERATION
MAJESTIC

CODE NAME:

"PROJECT AQUARIUS"

(COPY ONE OF ONE)

WARNING: This is an ULTRA-TOP SECRET, YOUR EYES ONLY document containing essential compartmentalized information for the national security of these United States of America. Access to the enclosed material is strictly and only limited to persons possessing MAJIC-12 CLEARANCE. Approval is issued by PRESIDENTIAL AUTHORITY ONLY! Reproduction in ANY form or the taking of any sorts of notations is STRICTLY prohibited.

* TOP SECRET *

NO DISSEMINATION OR DECLASSIFICATION

NO DISSEMINATION OR DECLASSIFICATION

405285

:TOP SECRET:

EYES ONLY

EYES ONLY

NOTICE: The **ULTRA-TOP SECRET** classification utilized in this briefing paper is a **DEFENSE INTELLIGENCE AGENCY/PENTAGON** designation. Other agencies and/or departments of the various military and executive divisions will use another form of security-level nomenclature. **ALL** accession is by **PRESIDENTIAL AUTHORITY ONLY**, and the following cross-reference of departmental designation is for the reader's information **ONLY**.

DEPT. OF THE ARMY: Top Secret, Red-one (STA/R-1).
 DEPT. OF THE AIR FORCE: Top Secret SIOP/ESI, or, Top Secret SCI.
 DEPT. OF THE NAVY: Top Secret-Ultra, level "S", or, Code Four.
 NATL. SECURITY AGENCY: Top Secret-Ultra, or, Above Top Secret.
 CENTRAL INTELLIGENCE AGENCY: Top Secret, "Red Level-Alpha".
 DEPT. OF STATE: N. S. Provision Exempt/N.S.P.E. Classified.

NOTICE: Within this paper, certain names have been changed or deleted in order to protect the safety and/or privacy of living persons. This is within the meaning and scope of the Right To Privacy Act, and/or is being carried out under the Dept. of Justice's Federal Witness Relocation Program in some instances. True identities of these persons **MAY** be provided upon special request by **PRESIDENTIAL APPROVAL** and on a **NEED-TO-KNOW** basis **ONLY**!

AGENCY REPORT NUMBER

105389

: TOP SECRET :

EYES ONLY

EYES ONLY

LIST OF CONTENTS BY SECTION

- SECTION A: Objectives, History and Organization of Operation Majestic (four pages).
- SECTION B: Historical Precedents at Roswell, New Mexico (six pages).
- SECTION C: Historical Precedents at Aztec, New Mexico (10 pages).
- SECTION D: Selected and Condensed Conversations with the Aztec, HM, Extraterrestrial Biological Entity (seven pages).
- SECTION E: Assessment of the Situation and a Statement of Position on Unidentified Flying Objects. Prepared for Entry Level Majic-12 (six pages).
- APPENDIX 1: Selected Illustrations.

SECRET NUMBER

405389

EYES ONLY

DO NOT DUPLICATE

EYES ONLY

:TOP SECRET:

EYES ONLY

EYES ONLY

OBJECTIVES
HISTORY
AND
ORGANIZATION
OF
OPERATION MAJESTIC

SECTION A

(4 pages, one illustration)

ADJUTANT GENERAL'S REPORT NUMBER

405389

: TOP SECRET :

EYES ONLY

EYES ONLY

page A1-of-4

SUBJECT: OPERATION MAJESTIC-12 PRELIMINARY BRIEFING
PREPARED: 08 JANUARY 1989
BRIEFING
OFFICER: MJ-1

NOTE: This document has been prepared as a preliminary briefing only. It should be regarded as introductory to a full operations briefing intended to follow.

OBJECTIVES.

OPERATION MAJESTIC-12 (MAJIC-12 or MJ-12) is a ABOVE TOP SECRET Research and Development/Intelligence operation responsible directly and only to the President of the United States. Operations of the project are carried out under control of the MAJIC-12 Group which was established by special classified executive order # 092447 of President Truman on 24 September 1947, upon recommendation by Dr. Vannevar Bush and Secretary of Defense James Forrestal.

Objectives of the Group include the evaluating of risk, control and containment of the violation of United States air space and of national security by unknown and possibly hostile aliens of one or more advanced races of beings presumed to have originated elsewhere than on the planet Earth. The development of effective countermeasures and the application of any scientific or technical discoveries made during the operations is also of the highest concern. The following are some established aspects of the situation:

- Advanced beings of non-human nature are continuously being detected along with their flying-disc craft in the controlled space of the U.S. since 07 July 1947.
- The remains of seven (7) flying craft and the bodies of twenty-seven (27) deceased non-human beings have been recovered as of this briefing date, and are at present being studied by MAJIC-12 scientists.
- Three of the recovered craft are nearly intact and one such machine has maintained some of its power since retrieval in 1948.
- Since 1957, no additional alien craft have been available for study. The assessment is that these beings have adapted or perfected the machines to the conditions of our world, so as to avoid any further such revealing crashes.

EYES ONLY

DO NOT DUPLICATE

EYES ONLY

TOP SECRET

ONLY

EYES ONLY

page A2-of-4

HISTORY

As for the history of the MAJIC-12 Group and its membership and investigations, the complete records are available with proper clearance through the office of counterintelligence of the DEFENSE INTELLIGENCE AGENCY and are on microfilm at this time. The written minutes and transcripts of all directorate meetings as well as a full record of all investigations in their original form are located at the NJ-11HQ, codenamed "Bigger Command" and situated at the decommissioned Marine Air Station at Flat Rock, Nevada. This site is now under the covering authority of the Nuclear Regulatory Commission, the story having been circulated widely that this base is involved in the long-term monitoring of residual radiation levels that resulted from the A-bomb testing nearby in the 1950's. With the exception of a monitoring task unit at Wright-Patterson Air Force Base, for the sending up of all sightings reported through the Dept. of the Air Force, all gathering operations are now located at the Nevada site. Over a period of years, all recovered evidence from the crashed alien craft has been transported to underground storage at Flat Rock, making full use of the large complex of fallout shelters built there starting in 1954.

Scientific and technical research and analysis for MAJIC-12 is being conducted at several places around the country. Small monitoring task units remain in place within the command structure of certain other branches of the armed forces. These include MCRAB in Colorado and SAC in Nebraska - for reporting of radar sightings, and SEACOM in Virginia and PACCOM in California for reporting of Naval encounters. The aeronautical research is being carried out by the Redstone Arsenal in Alabama, and linguistic studies are conducted at NASA's Ames research center in California. A team from Johns-Hopkins University and the National Institute of Health is reducing the biological and medical intelligence gathered by the project.

Just as the title implies, MAJIC-12 is headed by a directorate of twelve persons chosen for life (or until retirement), six are military and/or administrative positions, and six are private sector scientists and engineers with long histories of governmental affiliations. All vacancies on the directorate are filled by a unanimous vote of seated directors. The President may recommend an appointment, but while all other decisions relating to this office, membership on the MAJIC-12 directorate is finally decided solely by that group. Such limitation of executive authority is a long-standing historical decision based on the conviction that these twelve persons belong to a small family of highly skilled experts. Only from within such a family is it possible to have a taste of the "special mix" required for this very extraordinary kind of work. It has been said by a former director of the group that the understanding of alien minds requires an alien mind.

EYES ONLY

DO NOT DUPLICATE

EYES ONLY

A05389

A05389

: TOP SECRET :

EYES ONLY

EYES ONLY

ORGANIZATION

page A1-of-4

The organizational structure of OPERATION MAJESTIC-12 is arranged into three (3) tiers or levels, by order of a need-to-know information flow process. These are:

- **DIRECTORATE** - Composed of twelve members sharing equal authority and complete access to all information. The President is accepted to be the thirteenth member of this body, as well as its final authority.
- **TASK UNITS** - Composed of a variable number of scientific and information gathering groups and/or persons. The complete listing of current consultants in the sciences is available on request. Identities of Military monitoring units and individuals must be requested through the directorate.
- **ENFORCEMENT** - Composed primarily of selected recruits from the Army Special Forces Command. These units are organized into Companies known as "Blue Berets", and are trained and supported by Air Cavalry units based out of **DIGGER COMMAND** in Flat Rock, Nevada. Purpose includes containment of tactical situations, control of public awareness, panic, evacuation, etc. Originally created for the security of recovery rights during investigations and the transporting of sensitive evidence. Also includes a number of plainclothed operatives whose purpose is the spread of cover stories to avoid public fears about the inability of the Government to control the situation. These members also operate diversions for civilian investigators to discourage such efforts so as to aid in control of public information and interest.

NOTE: The identities of the directorate, MJ-12 are held in the strictest secrecy. They are known only to each other and to the seated President of the United States. These names are never to be written down.

The purpose and need for the highly covert and ABOVE TOP SECRET designation of this operation will become apparent with the study of the following reports which led to the forming of OPERATION MAJESTIC-12. Since the time of these events, over forty years ago, the state of our science has advanced to the degree that we may see a measure of shortsightedness in the then-expedient actions of the administration. As a result of actions taken at that time, several sensitive developments have resulted which are of ever-increasing concern to the National Security of the United States of America.

1
2
3
4
5
6
7
8
9
10
11
12
13
14
15
16
17
18
19
20
21
22
23
24
25
26
27
28
29
30
31
32
33
34
35
36
37
38
39
40
41
42
43
44
45
46
47
48
49
50
51
52
53
54
55
56
57
58
59
60
61
62
63
64
65
66
67
68
69
70
71
72
73
74
75
76
77
78
79
80
81
82
83
84
85
86
87
88
89
90
91
92
93
94
95
96
97
98
99
100

5389

EYES ONLY

EYES ONLY

DO NOT DUPLICATE

:TOP SECRET:

EYES ONLY

EYES ONLY

page 8-2-of-6

The crash near Roswell occurred sometime in the evening of 2/3 July 1947. At about 20:47 hours at least two dozen persons in the area observed a bright yellow or "sun colored" disc-shaped object over the area. On 3 July 1947, in the early afternoon, the widely scattered wreckage was discovered by local ranch manager William Brazel and his son and daughter. The authorities at the Roswell Field Army Air Forces Base were alerted by Mr. Brazel at 09:18 of 07 July, 1947 and two officers of the base were guided to the crash site by the ranch manager. These were Major Jesse Marcel, staff intelligence officer of the 509th. Bomb Group Intelligence Office, and Captain Lee Cerns of the Counter-intelligence Corps.

When the two officers returned to Roswell Field with samples of the crash site material, they immediately reported to Colonel William Blanchard of Air Tactical Command. It was at this point that the first of many decisions were made that have gone into the historical posture of this government's position on the public's need-to-know about the situation. Colonel Blanchard released an official press statement confirming that wreckage of a flying disc had been recovered. This was phoned in to an Albuquerque, New Mexico radio station without approval from higher level command in the Army Air Corps. Indeed, no one in the Pentagon or anywhere else was notified or consulted prior to the release of this information.

In defense of Colonel Blanchard's actions, it should be noted that no established procedure on the issue existed at the time. There were no Office of Special Investigations, Central Intelligence Agency, National Security Agency, or Defense Intelligence Agency or any other similar such organizations at that time. It should be noted that within less than two years following this incident, and as its direct result, all of the above agencies were established with the exception of the Defense Intelligence Agency which was chartered in 1961.

At nearly the same time on the evening of 07 July, two events were taking the incident in widely different directions at widely separated locations. In Roswell, Major Marcel was ordered by Colonel Blanchard to load the debris onboard a B-29 aircraft, and fly it to Wright Field (now Wright-Patterson AFB) at Dayton, Ohio, for examination. As this was being done, a reporter from the Albuquerque radio station called to Wright Field to confirm the crash with the commanding general there. This was Lt. General Nathan Twining, Air Materiel Command, where any such reported incident should have been filed. In fact, the wreckage and all persons involved were already on their way to Wright Field. But this was the first that General Twining had heard of the matter. Twining was forced to state that he knew nothing of a crashed disc craft.

SECRET

405389

EYES ONLY

DO NOT DUPLICATE

EYES ONLY

NO DISSEMINATION OR DECLASSIFICATION

: TOP SECRET :

ONLY

EYES ONLY

page 8-3-of-6

Upon finally receiving verbal confirmation by open telephone line from Colonel Blanchard at Roswell Field, General Twining did three things in rapid order in an effort to contain the situation. First, he sent clear orders by secured teletype to Blanchard at Roswell, instructing him to do nothing and talk to no one until further orders from him. Second, Twining used the same system to contact General Roger Ramey, who was in command at Carswell Army Air Forces Base (HQ-5th. Air Force), Fort Worth, Texas, ordering him to direct Major Marcel to vector a landing for an intermediate stop at Carswell, which was on his flight plan. General Ramey was instructed to: A., remove the recovered debris from Marcel's aircraft and place it onboard another in sealed crates to be forwarded to Wright Field. B., order Marcel and his crew not to talk to reporters. C., notify the press of a photo conference to be held at Carswell where an explanation would be given. D., state at the conference that the wreckage was only the remains of a weather balloon and its attached inflight radar target and prominently display created evidence of same. E., return Major Marcel at once to Roswell Field. Then General Twining sent an open teletype to the newsrooms at the two Albuquerque radio stations ordering them to cease transmission of the original story and to contact the Roswell Office of Public Information for the correct release. Finally, General Twining boarded a plane and flew directly to Roswell Field in New Mexico.

At his arrival in Roswell, General Twining relieved Colonel Blanchard of command and ordered troops to set up a secured perimeter around the exact crash site. He then personally supervised the total policing of the area and removal of all remaining evidence, as well as the four day debriefing of Major Marcel and the six day debriefing of rancher Brazel as he held incommunicado until the clean-up was complete.

The wreckage recovered at Roswell consisted of three hundred and eighty-seven (387) fragmented pieces of various structural debris. Most prominent among these were beams of many lengths and ranging in diameter thickness from just over half an inch, to just under two inches. These were found to be composed of a very light and porous metal alloy composed of extremely pure aluminum and silicon mixed with zirconium in an unknown crystalline structure. The beams were flexible and were totally unaffected by both oxyacetylene and oxyhydrogen blowpipe cutting torches. Several of these contained hieroglyphic and alphabetic markings of unknown type raised onto their surfaces. Also found were many pieces of a thin metallic foil-like material presumed to have been the outer coating of the craft's hull, or skin.

 3
A
4
3
4
4
3
C
R
E
E
T

405389

EYES ONLY

TOP SECRET

:TOP SECRET:

EYES ONLY

EYES ONLY

page 2-4-of-6

Following the discoveries near Roswell, New Mexico it became obvious to the intelligence officers working under the newly appointed Secretary of Defense, James V. Forrestal, that a special operations group was going to be needed to coordinate the accumulation & dissemination of data on this subject. This became known as the Majestic-12 Group when President Harry Truman chartered them in September, 1947.

The original directorate of the Group were as follows:

- Dr. Lloyd Berkner - Scientist and Executive Secretary of the Joint Research and Development Board in 1946 (under Dr. Vannevar Bush). Also headed the special committee to establish the Weapons Systems Evaluation Group. Was Scientific Consultant to the Central Intelligence Agency on UFO's during his years with MJ-12.
- Dr. Detlev Bronk - Internationally known physiologist and biophysicist who was chairman of the National Research Council and the Medical Advisory Board of the Atomic Energy Commission (later, Nuclear Regulatory Commission). Also, Chairman of the Scientific Advisory Committee of the Brookhaven National Laboratory.
- Dr. Vannevar Bush - Recognized as one of the United States leading scientists. Organized the National Defense Research Council in 1941 and the Office of Scientific Research and Development in 1943, which led to the wartime establishment of the Manhattan Project to develop the first atomic bomb. After the war, he became head of the Joint Research and Development Board. Was responsible for the recommendation, along with Secretary Forrestal, to President Truman that the Majestic-12 operation was required. Dr. Bush was a principle organizer of the efforts to bring many German scientists, including Albert Einstein, to the U.S. before and after the war.
- James V. Forrestal - Served as Secretary of the Navy before he became Secretary of Defense under President Truman in July, 1947. Among his first acts as the Defense Secretary was the responsibility for organizing the crash recovery of the flying disc from Roswell, New Mexico, which occurred in the same month he took office. He was the first to approach President Truman about the need for an operation like MJ-12, and was in charge, along with Dr. Bush, of setting up an international intelligence gathering organization to monitor world-wide UFO activity. The results of these efforts would grow to include the Central Intelligence Agency and National Security Agency, both of which were founded shortly after the Roswell and Aztec crashes.

SECRETARY OF DEFENSE

405389

EYES ONLY

DO NOT DUPLICATE

EYES ONLY

:TOP SECRET:

EYES ONLY

EYES ONLY

page B-5-of-6

As a direct result of circumstances surrounding the Aztec, New Mexico recovery, Secretary Forrestal suffered a mental breakdown in March, 1949, & was admitted to Bethesda Naval Hospital under the cover story of needing a "routine physical check-up". While he was at that facility, he is supposed to have committed suicide by jumping from an upper story window in May, 1949. A special committee of counter-intelligence of the Central Intelligence Agency later concluded that the highest probability scenario involves his having been either drugged, tricked, or pushed into his fatal fall. The presumed reason for this involves details of the Aztec crash which will follow in that section.

- Gordon Gray - Assistant Secretary of the Army at the time of MJ-12 initialization and Secretary of the Army in 1949. In 1950, was appointed as Special Assistant on National Security Affairs to President Truman. In 1951, headed the Psychological Strategy Board for Unidentified Flying Object Impact (PSBUFOI), under Central Intelligence Agency Director Walter Bedell Smith.
- Vice Admiral Roscoe Hiltenkoetter - Third Director of Central Intelligence (DCI) from 1947 to 1950. Founding Director of the Central Intelligence Agency, established in September, 1947 to direct international information gathering on UFOs. Was covertly placed on the board of directors of the civilian UFO organization, National Investigations Committee on Aerial Phenomena (NICAP) to monitor their activities and control the release of their information to the public. Was forced to take an early retirement after he broke security making the public statement that "UFOs are real and through a process of official secrecy and ridicule, many citizens are led to believe the unknown flying objects are nonsense." In defense of his position, it must be noted that by this time, the events of the Aztec, New Mexico recovery and the death of Secretary Forrestal had depressed and demoralized most of the original members of the investigating group. By 1951-52, MJ-12 had to be entirely reconstructed due to the feelings of many of the directorate that the public had a right to know the facts.
- Dr. Jerome Hunsaker - Aircraft designer and head of the Departments of Mechanical and Aeronautical Engineering at the Massachusetts Institute of Technology. Chairman of the National Advisory Committee for Aeronautics. Was in charge of studies of the machined portions of the debris recovered from the crash sites. Expert in X-ray and microscopic details analysis.

SECRET REPORT NUMBER

405389

:TOP SECRET:

EYES ONLY

EYES ONLY

page 5-6-of-6

- Dr. Donald Menzel - Director of Harvard College Observatory and a consultant to the National Security Agency on astronomy. Held a Top Secret Ultra clearance.
- General Robert Montague - Base Commander at the Atomic Energy Commission Installation at Sandia Base, Albuquerque, New Mexico from July, 1947 to February, 1951. Was reassigned and transferred following a heated disagreement over National Policy of MJ-12 regarding sightings around nuclear research facilities. Felt the risk to the public health was of greater issue than security and control of the situation.
- Rear Admiral Sidney Souers - First Director of Central Intelligence (DCI) from January-June, 1946. Upon initialization of MJ-12, became Executive Secretary of the National Security Council, in order to control domestic security of UFO information. Following the Aztec, New Mexico recovery and related actions, Souers resigned (1950) his positions in national security and his commission in the Navy. He was retained as a consultant on security to the Executive Branch.
- General Nathan Twining - The principle "ramrod" for high security in the Matter of Unidentified Flying Objects and an opponent of scientific release of data or the involvement of civilian scientists. Twining was an outstanding commander of bombing operations in both the Pacific and European theaters in World War II. In 1945 he was appointed Commanding General of Air Materiel Command, based at Wright Field (Wright-Patterson AFB). Organized Project Sign and Project Grudge (later became Project Bluebook) to control and discredit civilian sightings and civilian investigations. Chief proponent of covert investigation and clandestine contact attempts regarding UFOs and the EBIs (Extra-terrestrial Biological Entities).
- General Hoyt Vandenberg - After an outstanding career in the Army Air Forces, was appointed the second Director of Central Intelligence in 1946 until May, 1947. Following the Aztec, New Mexico incident, he joined General Twining in supporting the sensitive nature of releasing any UFO information to the public. When the Air Technical Intelligence Center published its Top Secret "Estimate of the Situation" indicating the belief that UFOs were interplanetary in origin, in August, 1948, General Vandenberg ordered the document burned before it could be distributed to government scientists with the required clearance. This was directly related to the outcome of the Aztec investigation which began in March of that same year.

It is possible to disclose the identities of the original MJ-12 directors because they are all deceased. It is necessary in order to understand the climate of confusion and anxiety resulting from the second recovery incident at Aztec, New Mexico in 1948.

57 NUMBER

405383

EYES ONLY

DO NOT DUPLICATE

EYES ONLY

HISTORICAL PRECEDENTS

AT

ARTEC, NEW MEXICO
(25 MARCH 1948)

SECTION C

(10 pages)

AGENCY REPORT NUMBER

405389

: TOP SECRET :

EYES ONLY

EYES ONLY

page C-1-of-10

ATTEC, NEW MEXICO
(25 MARCH 1948)

On 25 March, 1948 at approximately 16:19 (4:19PM) hours, Mountain Standard Time (local time, or LT), a disc-shaped flying machine came down about twelve (12) miles northeast of the small community of Attec, New Mexico. The controlled landing occurred in a small desert canyon on the private grazing land of a local farmer and rancher.

The approach of the disc was tracked with the aid of three (3) high powered missile tracking radar stations belonging to the recovery network of the White Sands Test Range and located in classified areas of southwest New Mexico. The disc-craft was first observed in violation of the restricted air space of this facility. The disc was flying on a level glide path and on a heading from the southwest-to-northeast at about 3,200 feet altitude when first detected. This track detection resulted in an Air Defense Command Alert that included the scrambling of squadrons of jet interceptors from the nearby Sandia and White Sands bases. Also, per a recent memorandum issued through Operation Majestic, the Commander-in-Chief of Air Defense Command (CICADC) immediately notified Secretary of State General George C. Marshall.

At 17:53 hours LT (5:53PM, MST) the disc-craft appeared to lose both speed and altitude at nearly the exact moment that it was triangulated by returns from all three (3) radar dish antennae in an effort to vector the interceptor squadrons towards their target. At the time, it seemed to be an evasive tactic on the part of the disc-craft. The current assessment is that the microwaves from these long range radars almost certainly evidenced a damage to the power or flight control systems of the disc-craft.

At 18:02 hours LT, the craft dropped below radar some four (4) minutes before the White Sands jet squadron would have reached intercept point (IP) and engaged-to-disc-craft. Estimates later indicated the disc-craft impacted or landed at approximately 18:19 hours LT. The exact position of the landing zone (LZ) was determined within minutes by calculation of the last radar triangulated tracks and confirmed and by a visual fly-over of interceptors from the White Sands Base. The LZ-IP was at the bottom of Hart Canyon, a dry wash area about 12.2 miles northeast of Attec, New Mexico and 2.3 miles northwest of the Cave Creek bend in the Animas River. This was on private land about 1.7 miles north of the state highway and nearly $\frac{1}{2}$ mile west of unpaved county road S-141 south.

At 18:26 hours LT (6:26PM, MST), on 25 March 1948, the crash site was visually confirmed by the commander of the 152 tactical fighter wing and relayed to the Air Defense Command officer at Sandia Base, Albuquerque, New Mexico. This information was conveyed at once to the CICADC who contacted Secretary of State Marshall. By 18:35 hours LT, General Marshall had made contact with the Army Air Force's Interplanetary Phenomenon Unit (IPU), a section of the Army Counterintelligence Directorate. The IPU was maintained and supported out of nearby Camp Meade, Colorado and was the closest group able to secure, recover, transport and store a disabled disc-craft. This action was entirely correct in the interval before a MAJESTIC operation could be activated and the preparations of the IPU group while awaiting a MAJICOPS crew saved valuable time.

EYES ONLY

EYES ONLY

DO NOT DUPLICATE

SECRET

405389

: TOP SECRET :

EYES ONLY

EYES ONLY

page C-2-of-10

The IPU was formed after the Roswell, New Mexico crash recovery and was later absorbed into the enforcement division of OPERATION MAJESTIC at the time that the Department of the Air Force was established as an entity separate from the U.S. Army.

The disc-craft was recovered and the LZ declared secured by 22:45 hours LT through the actions of an IPU scout team sent to the Hart Canyon area. Meanwhile, General Marshall had contacted Dr. Vannevar Bush - scientific head of MAJICOPS - and a joint IPU/MAJICOPS team was assembled under NJ-12 command for the purpose of investigating and clearing the LZ, or crash site. The local rancher who owned the land and [REDACTED] were held incommunicado while the field analysis and subsequent clean-up was conducted at Hart Canyon. Visiting with the rancher at that time and planning to hunt for game animals on his land, were the owner of a local radio repair shop plus a unemployed oil hunter and inventor. These last two parties were later to get together and tell their story to a columnist from Esquire Magazine named Frank Scully. This author later published a book in 1950 detailing parts of the Aztec recovery story. This breach of security was accelerated by the use of a cover story for the IPU/MAJICOPS workers that proved to be ineffective. It was decided to disguise the Aztec efforts as an exploration for oil by a fictional drilling company, a fact that was not in agreement with the knowledge of the unemployed oil hunter who knew that there was no oil in the area. Later both this independent oil hunter and the columnist Scully were discredited by facts leaked to a writer at True Magazine by covert operatives of the MAJESTIC Enforcement Division. This action was unfortunate but very vital in light of the sensational nature of the Aztec discoveries. Fortunately, Scully labeled this fortune hunting wildman as a "scientist" in his book and during the period of the book's sales, this adventurer was convicted of fraud for trying to peddle a device he claimed would find oil. Mostly by luck, the security breach healed itself and the book was quickly forgotten with only minor help from NJ-12.

That evening of 25 March, General Marshall ordered ADC off of alert status and requested that they send teletypes to the radar stations advising them that there had been a false alarm. Time was an important factor here since the disc-craft had landed intact and had the appearance of having been landed under the control of it's operators. No means of entry was immediately available and members of the IPU scout team considered it possible that some of the crew of the disc-craft might still be alive inside it.

At 01:20 hours LT, 26 March, the team of NJ-12 scientists assembled by Dr. Beck arrived at Durango Air Field, Colorado about thirty-five (35) miles northwest of Aztec. All members of the teams of IPU and MAJICOPS investigators were then sworn to an Ultra-Top Secret security oath. All personal property and identification was left in lockers at Durango and the teams boarded trucks headed for the Hart Canyon site. It must be remembered that the helicopter was still in experimental development at this stage and trucks were the best means of entering the rugged terrain as well as the fact that they would cause far less attention than the noisy and unfamiliar helicopter, which was, however, used to bring in the initial IPU scout team.

2 Name withheld to protect a living individual's privacy.

EYES ONLY

EYES ONLY

DO NOT DUPLICATE

AGENCY SECURITY NUMBER

405389

: TOP SECRET :

EYES ONLY

EYES ONLY

page C-3-of-10

In order to fully follow the course of the Aztec, R.A. recovery and investigation it is important at this point to detail the names and the backgrounds of the members of the IPU/HAJICOPS team before returning to a chronology of the events at Hart Canyon. Only four of these persons were on the HAJICOPS directorate. These were: Dr. Lloyd Berkner, Dr. Dotlev Bronk, Dr. Vannevar Bush, and Dr. Jerome Nussaker. Their biographies may be found in the preceding file of the Roswell, N.M. incident.

The following were selected by the W-12 directorate to accompany the IPU/HAJICOPS recovery team to the Hart Canyon landing site:

- Dr. Carl A. Helland, Director and senior scientist of the Geophysics and Magnetic Sciences Laboratory of the Colorado School of Mines. Was instrumental in discovering that sections of the Aztec disc-craft were held together by molecular magnetic bonding along finely polished seams and determined a means for it's disassembly.
- Dr. John von Neumann, former consultant on the Manhattan Project (atomic bomb) in 1943 and a close personal friend of Dr.'s Bush and Oppenheimer from same. Expert in both mathematics and computing machines. His work on the Aztec disc eventually led to the binary computer language used today in all modern electronic computers.
- Dr. Robert J. Oppenheimer, was Director of the Institute for Advanced Studies at Princeton University from 1947 after a distinguished period of service during the war as head of the Los Alamos atomic bomb project. Also, was Chairman of the General Advisory Committee of the Atomic Energy Commission (later Nuclear Regulatory Commission). Acting for his friend, Dr. Bush, who had not yet arrived at Aztec, he selected most of the recovery team members and arranged with the U.S. Navy for storage in their facilities at Los Alamos until permanent sites could be prepared.
- Dr. Johann von Roesler, an expert nitrogen chemist whose work led to development of Nitrogen Mustard Gas, Nitro-glycerin derivatives leading to Trinitrotoluene (TNT) and worked with Dr.'s Bush and Oppenheimer on triggering devices for the atomic bomb. Originally included as a consultant on the possible need to gain forced entry to the disc-craft by use of high explosives, he eventually worked with Dr. Dotlev Bronk on investigating the liquid nitrogen cooled cryogenic suspension system used aboard the disc-craft by it's crew members.

EYES ONLY

DO NOT DUPLICATE

EYES ONLY

:TOP SECRET:

EYES ONLY

EYES ONLY

page C-4-of-10

- Dr. Marie A. Tuve, worked with Bush and Oppenheimer for the Office of Scientific Research and Development (Manhattan Project) during World War Two. Top pioneer in radio-wave propagation in the upper atmosphere. Later was part of the Bell Laboratories team which developed the principles of laser light physics derived from study of systems found aboard the Aztec disc-craft.
- Dr. Horace van Valkenberg, was Director of the School of Metallurgy at the University of Colorado, expert in analytical chemistry. Was useful in determining proper materials handling of components of the Aztec disc-craft during investigation and disassembly. Later pioneered science of X-ray crystallography, crystal holography and electron microscopic metals analysis as well as the holder of over thirty (30) patents through Arizona State University in metal alloy processes. Most of the above were the result of research he began after his analysis of the structural materials of the disc-craft.

Although not present during the recovery phase of the Aztec operation at Hart Canyon, it is important we acknowledge the contributions made later by Lambert Callihanes and William Friedman who are experts in language and cryptology and whose analysis of the writings and symbols found aboard the disc-craft led to a degree of understanding of the cryogenic suspension system used to freeze the ship's occupants. Also, Dr. Paul A. Scherer, whose supply of refrigeration and nitrogen cooling and pumping equipment aided greatly in the revival of the suspended occupants aboard the disc-craft at the field laboratory set up at Los Alamos. Both Callihanes and Friedman went on to work for OPERATION MAJESTIC for many years in our Covert Operation Section of the Enforcement Division as deep planted agents within the National Security Agency. Dr. Scherer led an illustrious career as Research and Development Director for Air Research Corp.

The IPU/MAJICOPS convoy took routes to the Hart Canyon site that avoided main roads, and on arrival they set up road blocks and secured a two (2) mile perimeter around the canyon rim and landing site. In exchange for his silence, private land was leased from the farmer who owned the field in Hart Canyon for the construction of a controlled access road to and from the area. Equipment carrying trucks were camouflaged to look like oil and gas drilling rigs and personnel involved wore coveralls with the name of a fictional oil exploration firm created by MAJICOPS for this purpose. Later a fence was constructed around the perimeter of the canyon and bore the name of the oil company and warning of blasting on signs attached to it.

When the time came for removal and restoration of the site, trucks were used that were labeled "High Explosives" and were escorted by Blue Berets disguised as National Guardsmen. The cover story which was very effective in keeping the explosives away was spread that these trucks were removing large amounts of nitro-glycerine used in blasting during oil explorations. This was the reason given for the "National Guard" escort; that the governor of the state requested the escort to avoid the theft of the explosives.

EYES ONLY

DO NOT DUPLICATE

EYES ONLY

:TOP SECRET:

EYES ONLY

EYES ONLY

page C-3-of-10

Shortly after sunrise on 26 March 1948 the IPU/MAJICOPS team began operations at the Hart Canyon location. Measurements of the radiation levels around the craft and the landing site were taken and proved negative (i.e., nothing out of the ordinary). Some high concentrations of potassium chlorate powder were detected in soil samples surrounding the disc-craft. A fine, yellowish dust composed of particles less than five (5) microns in diameter was detected coating the nearby underbrush. Chemical analysis showed that this was composed of sulfurous substances in an unfamiliar combination having a bivalent, rhombic crystalline structure and was mixed with an unknown and extremely highly electro-positive element in the iodide group. It is now known that this was a form of disinfectant automatically discharged by the craft upon any touch down to a planet's bioactive soil. Linear calibration surveys were taken by theodolite (surveyor's transit) and photographs were taken from every possible angle with a Graflex 4"x5" plate camera equipped with special calibration overlay masks to register dimensions on the film. The ship was determined to be 99.983 feet in diameter and 42.638 feet in height, or thickness, including the 9.451 foot extension of the landing pods supporting it off of the ground. These three round, hemispheric pods beneath the craft had obviously been extended from within the hull during a controlled landing effort. These were measured to form the points of an equilateral triangle 22.3 feet on a side, center-to-center and were 16.45 feet each from the epicenter of the craft's bottom hull. Both upper and lower hull surfaces were smooth with no means of entry or even of propulsion immediately in evidence. The hull was the color of dull, unpolished aluminum and was apparently metallic in nature with a normal surface temperature. No seams, hatches, rivets or portholes were obvious. Photographs taken at closer than fifteen (15) feet were found to be blurred. Later, both infrared and magnetic radiation fields were found to surround the craft and were no doubt responsible for fogging of the films in close photographs. Watches and other ferric (iron-based) tools and instruments left within this zone around the craft were found to become magnetized.

Eventually the team crawled across the upper hull surface with access by a scaffold erected around one side of the craft. Upon conducting a close examination, they discovered a small, hairline crack at the base of a slight bulge in the domed top of the upper hull. Careful study determined this crack to be irregular enough as to be a result of accidental impact with a solid object (much later a civilian witness was debriefed in Albuquerque who testified that he observed the craft strike the side of a cliff along the south bank of the Animas River at about the same time the power ship dropped below radar). After banging on the hull and yelling through a loudspeaker failed to receive any response from the presumed occupants of the disc-craft, it was decided to attempt to widen this crack in an attempt to gain entry. At first the discussion was held as to the possibilities of the craft's internal atmosphere being explosive or that our air could be poison for the occupants to breathe. Finally, Dr. Bush waved off such debate on the grounds that if some action was not taken immediately, any chance for survival of members of the ship's crew would run out with the passage of time.

405389

405389

EYES ONLY

DO NOT DUPLICATE

EYES ONLY

:TOP SECRET:

EYES ONLY

EYES ONLY

page C-6-of-10

First heat from blowpipes was applied in excess of ten thousand (10,000) degrees and finally diamond-tipped drill bits were used until the crack was at last extended longitudinally and finally widened into a gap great enough to shine a small electric light inside and look around. Another plate of material of similar construction seemed to be solidly blocking the view. However, at a seam along the bottom edge of the panel, another breach was located. It was then assumed that the craft was constructed of both an inner and an outer hull separated by only a few inches. After many minutes more of effort, the drill broke through into another empty space. Upon extending this opening and looking in, the research team were surprised to discover the interior to be well illuminated with sunlight. It was discovered that the original opening was forced at the lower corner of a sort of large rectangular window or porthole which had been cracked. These portholes were not visible from the outside, but were extended all the way around the compartment in huge curved rectangles and separated by only a thin structural brace between them. The exception was the cracked one by which the team gained entry; it had turned a milky translucent color like frosted glass. Later testing showed that the entire outer hull was covered in this transparent material that was then blocked off by an opaque inner hull where desired by the ship's designers. This was a thin and inflexible skin barely thicker than four sheets of typing paper and yet direct blows from sledgehammers would not dent or rupture this foil-like substance.

After experimentation with a long, thin rod used to probe at what looked like levers or buttons inside, a panel in the lower hull extended down along what seemed like invisible seams and became a ramp leading up into the craft. When calling out provided no reply, the team obtained flashlights and other equipment and entered the disc-craft. The greatest discoveries were made on the lower level, dubbed the "cargo hold", but the team of investigators did not immediately find the closed door or hatch to this compartment. Instead they found themselves in a small circular chamber about the size of an elevator cab. A spiral ramp of very steep incline led up around a center post to the upper chamber dubbed the "flight deck". Since the team had already observed some details of this upper chamber and had observed the bodies of two (2) small creatures slumped in chairs, it was decided to investigate these first in case they might be alive.

Inside the upper cabin room the team found the bodies of two (2) small humanoids about four feet in height and strapped into seats like those in a jet cockpit (acceleration couches) which faced a row of instrument panels built into a curved countertop circling the cabin just below the portholes they had previously seen from outside. The extraterrestrials were dead. Later study determined that the normal atmosphere inside the cabin was much thinner and colder than our air. When the crack in the windowframe happened the two (2) "pilots" died from sudden increase in pressure and temperature which caused skin hemorrhages like bruises and gave a brownish hue to their skin that first seemed like burns. The seats holding the bodies were found to adjust in size to fit almost any human form and to glide around a track in the floor that followed the instrument panels.

405389

- 1 - COPY DUPLICATE

EYES ONLY

:TOP SECRET:

EYES ONLY

EYES ONLY

page C-7-01-10

The group soon recognized that the instrument panels were active and some symbols were backlit by a blue-green glow. Some of these were changing as they watched. At this point Dr. Oppenheimer consulted with Dr. von Neumann and suggested that the team proceed with extreme caution since the craft was obviously still under some form of power and it might be activated into operation either by their interference or by electrical automation from within or without by radio control. Dr. Tuve suggested that the team should explore the construction of the controls rather than attempt to operate them on the chance of being able to trace the power to its source and deactivate some until some understanding of the purpose of each instrument could be determined. This was agreed upon and the work began. Among the first discoveries was that each panel of instruments in the flight deck counter-top slide out like a drawer along nearly invisible lines less than 0.2 millimeters wide and in a track or rail composed of a single strip of plastic wrapped in a continuous "S" curve around two metal rollers at the front and rear. There were no ball bearings, springs or motors. And yet each drawer slid both open and shut at the slightest touch of a fingertip as if self-powered. Later it was found that the rear roller bar traveled back-and-forth on a track of its own as the drawer was operated. This second track was curved so as to balance the force imparted by the bond in the plastic strip and thus created an almost frictionless mechanism. The type of plastic was then unknown to earthly science, but has since been developed and has what is known as a "molecular memory" of its ideal unstressed state, to which it will naturally return. Later it was determined that each section of controls or instruments aboard this craft was self-contained as to its power needs, by some means integrated into its nuclear structure that gathered electromagnetic and other energy from the space around it; in this case the fields of the Earth. There was no central power system anywhere on the ship and the control, flight and environmental systems drew their power from unknown sources. Instrumentation was eventually found to interconnect and communicate with each other on the molecular level by means of waves or vibrations set up in the atomic structures of each device. No wires or other recognizable electrical components were found.

The sections of the saucer hull which contained both upper and lower deck cabins were joined along microscopic lines by means of electromagnetic locking action engineered into their molecular structure. When Dr. Beth and a team of military engineers found several interlocking key-like devices in a cabinet built into the wall, Dr. Belland determined that these could be used to dismantle the craft into sections. At the joints, the operator of the keys, which linked together for different sized tasks, simply passed the tool over the seam. The device, which looked like a tuning fork and had each tine magnetized with opposite polarity, unlocked the joint when passed over it in one direction and rejoined the sections when it was drawn in the other direction. Even after disassembly and prolonged storage, the separate sections of this craft still maintain their power and operating capabilities to this day. All attempts to alter the magnetic fields that connect sections of the craft, performed with the use of powerful electromagnets under exacting laboratory conditions, have failed to change the degree of the interlocking effect. Also, kinetic force (repeated blows) has failed to alter molecular magnetic alignment according to crystal holographic imaging tests recently conducted.

EYES ONLY

DO NOT DUPLICATE

EYES ONLY

: TOP SECRET :

EYES ONLY

EYES ONLY

page C-8-of-10

The entire inner hull structure was built over a light-weight framework of flexible beams supporting the two main cabins and formed into pie-shaped equal thirds around a single, central, vertical shaft or pole running through the thickness of the craft and connecting the upper and lower outer hulls which also divided into equal thirds. The pole running through the saucer was about forty-one (41) feet long and about sixteen (16) inches in diameter. It was a perfect cylinder of a solid carbon/zinc alloy. When maintained or stored in a vertical position, this pole has no special power or ability. But when laid down at the Hart Canyon site on it's side, the pole began to drain electrical current from machines, generators and batteries and to broadcast a powerful magnetic field which damaged sensitive instruments and magnetized tools. For this reason, all tools had to be transported in an upright fashion.

Many other discoveries were made, including three different styles of writing; first, a form of symbolic pictographs, second, an alphabetic style of pictograph which seemed to break down the complex drawings into words, and third, a form that looked like the raised symbols in the Braille lettering for the blind but was not. Much later, Callhamos and Friedman showed this last form to be a sort of mathematical code based on binary counting and read from right-to-left like Hebrew. But the most important discoveries were made on the lower level cabin, which has been labeled the "cargo hold".

While attempting to take apart the "levels" in the lower entry chamber, the team discovered a hatchway in the wall that disappeared so well when closed that they over-looked it earlier. The hatch was opened and closed by touching a pictograph located in the wall beside it. This was curved to match the walls of the chamber. The mechanism was first called the "central chamber" and later, the "airlock" because it had no frame around it. The mechanism had no motor and worked similarly to the wheel-less magnetic levitation railroads we are currently planning to construct. The technology adapted by study of this door mechanism. The entire airlock chamber rotated like a geared cylinder inside another larger cylinder that formed a center core at the heart or center of the lower cabin, until the two openings in the two cylinders lined up. The material was so thin that the opening in the inner wall nearly went unseen. Inside the cargo hold were found a number of what appeared to be scientific work tables and medical examination tables. Just as Dr. Bronk was about to suggest that the "cargo" routinely carried might be a biological or even human one, Dr. van Valkenberg found a number (14) of small tube-like chambers built into the wall beside a clam-shell couch that looked like it would close to contain a human body. This couch was fitted with hoses for filling it with some liquid or gas when the two sections would come together and seal. A closer look at the sealed tubes which looked like the doors of clothes dryers at a laundromat revealed that they were a complex form of refrigeration system. Two were empty and twelve contained the bodies of what looked like human adults and small children as well as infants, all frozen as if preserved for specimens.

The decision was made to remove these from what had now been nicknamed "the saucer", and pack them in dry ice for preservation until a later autopsy could determine if they were alien or abducted earth humans.

EYES ONLY

EYES ONLY

DO NOT DUPLICATE

:TOP SECRET:

EYES ONLY

EYES ONLY

page C-9-of-10

In the process of transferring the frozen EBE bodies from their capsules, in the cargo hold of the disc-craft, to containers of dry ice for shipment, Drs. Bronk, von Roessler, Scherer and two Army pathologists from the IPU were amazed to discover that one of the small humanoid adults, similar to the "pilots" found deceased on the flight deck, had thawed out with a pulse, limited respiration and had lived in an unconscious state for several minutes before expiring. The shocked scientists then realized that the capsules were actually cryogenic suspension chambers and that the EBE's were still technically alive inside them. Although this concept was almost unheard of in western medicine at that point in time, Dr. Bronk dimly recalled reading about secret experiments conducted in Nazi concentration camps during the war. Such experiments had centered inhumanely on the suspending of the vital life signs and their resuscitation by freezing and thawing of the bodies of inmates who were used against their will like laboratory animals.

By this time, the scientists had determined that each section of the ship was able to maintain some operating power even after disassembly. A test showed this to be true for the cryogenic capsules as well. Due to the lack of proper facilities at the landing site, and the lack of a secured holding area for any living EBE's, (or convalescent provisions) it was decided to remove the entire cryogenic section of the craft, and to relocate to better research and medical laboratories on a military compound of some sort before attempting to restore any of the EBE's to consciousness. The story was quickly circulated that, yes, bodies had been found - all deceased, and that these would be removed for later analysis. The bodies of the two small "pilots" were shown to some other members of the recovery team who had heard about them, and then sealed in dry ice chambers, as was the corpse of the EBE who had expired in the cargo hold after thawing. A big display of this was carried out in full view of the other team members, and other dry ice transportation capsules were secretly loaded with dirt and stones before the entire group was loaded into a refrigerator truck labeled "high explosives" for transport. The rest of the craft, in pieces, was loaded onto flatbed trucks, covered with tarpaulins and labeled "explosives". Dr. Oppenheimer arranged for full use and needed remodeling of the restricted Navy Auxiliary Airfield complex at Los Alamos Base. The convoy proceeded at night and by the most unobserved route possible, to these facilities, while units of the IPU/MAJICOPS team assisted by Army Airborne "Rangers" stayed at the Hart Canyon site to effect final clean-up operations. The disc-craft arrived and was put into secured storage for analysis on 5 April 1948.

Two separate laboratories were set up at the Los Alamos site. One was for the detailed photographing and cataloging of each component of the disc-craft and the effort to decipher the forms of writing found onboard. The second facility was organized around the efforts of teams of doctors led by Dr. Detlev Bronk, to attempt the revival of the craft's occupants. Neither group knew what was the purpose or progress of the other's research. Only Dr. Oppenheimer was in a position, acting as go-between, to see all phases of the work in progress and to disseminate the findings of each to the appropriate investigators within each group. This was done in order to limit the risk of information reaching the public and causing a panic situation based upon a fear of undetectable aliens among them. The thought of riots and murders was on everyone's mind.

EYES ONLY

DO NOT

EYES ONLY

405389

:TOP SECRET:

EYES ONLY

EYES ONLY

page C-10-of-10

Eventually, the medical team was able to resuscitate one adult Earth-like humanoid male and three (3) Earth-like humanoid infants, all about six (6) months of age; two male and one female. The rest of the infants and one more short, grey-skinned, large-handed humanoid EBE, perished in the attempt to revive them. This was largely the result of Dr. s Bronk and Bush having decided to experiment first on the infants, who were of little intelligence value, in the hope of reviving the short EBE and the adult humanoid for a detailed debriefing.

The adult, Earth-like humanoid male turned out to be, himself, an EBE. But he spoke perfect English with a slight and untraceable accent and exhibited many telepathic and psychic skills as well. This EBE was, in his general appearance, completely human; internally, there were only slight differences in the formation of the heart valves, pancreas, lungs and he possessed two livers and an unfamiliar organ where the gall bladder would be in an earthman. Also, his digestive and gastro-intestinal systems were simpler and less able to process the wide range of foods that earthmen are used to. He was surprised to discover the scientists had unfrozen him alive, but was otherwise undisturbed to find himself in the company of earthmen. He stated within minutes of regaining consciousness that his only surprise would have been if the investigators had not chosen to "hold me captive out of your honest curiosity". After a hasty tele-conference with President Truman, it was explained to the visitor that if his intentions proved to be non-hostile and he cooperated in an information exchange, he would be granted diplomatic status and soon be repatriated to his own kind when the arrangement could be made. To this he readily agreed, provided he was not asked to give away any scientific secrets that could alter the course of our natural cultural development.

All together, the Aztec EBE lived under our protective custody on the Los Alamos complex for nearly a full year, from late April 1948 - until March of 1949. After that, he was sequestered at a private safehouse set-up by Army intelligence in rural Vermont, during which time he met with the President and other top government and military administrators, prior to his being returned to his people in August of 1949. He gave the scientists and military debriefers a great deal of mostly non-technical information about his civilization and it's motives for being on our Earth; a total of six hundred and eighty-three (683) pages of transcripts were made of recorded conversations. A condensed version of some noteworthy points from these many debriefing sessions follows at the end of this section.

The EBE saw little harm in allowing us to keep the remains of his space craft for study, since he felt our understanding of it would only gradually develop. He did suggest that his people would "probably have to drop one in stalker condition in the lap of the Soviet Union - just for the balance of things to be maintained.", and, "You are welcome to take this up with any higher authority you can find willing to listen to you, if you do not approve of this course". The team of scientists were told that the human-like infants were destined for our world anyway, and we were welcome to keep them. On 21 August 1949, the Aztec EBE was returned to his own kind at a meeting site southwest of Kirtland Air Force Base, Texas, and arrangements were made for a future meeting at the same location, to open diplomatic relations.

 Y
N
K
N
4
P
V
O
B
4
2
C
E
E
R
K

105389

- DO NOT DUPLICATE -

EYES ONLY

:TOP SECRET:

EYES ONLY

EYES ONLY

SELECTED AND CONDENSED
CONVERSATIONS WITH THE AZTEC, NEW MEXICO EBE

SECTION B

(7 pages)

EYES ONLY

DO NOT DUPLICATE

EYES ONLY

428887

:TOP SECRET:

EYES ONLY

EYES ONLY

page 0-1-0/-7

CONDENSED CONVERSATIONS WITH THE AZTEC, NEW MEXICOEXTRATERRESTRIAL BIOLOGICAL ENTITY
(from April, 1948-to-March, 1949)

The following conversations were held over an eleven (11) month interval between various interrogators, labeled here as INT, and the Aztec EBE. These are reduced from many hours of recorded debriefing, and are included here to give the reader a degree of insight into the character and the personality of the subject. These statements are not intended to provide complete answers to questions. All transcripts of the debriefing and the original tape recordings of the same are available through special request (and with proper clearance) from the DIA office of counterintelligence or the MASICOPS-MQ, code; "DIGGER COMMAND", re: "PROJECT AQUARI". These may be procured through the EXCOMCON-NET Liaison office at the Pentagon's Joint Strategic Objectives Staff Division (National Defense Section).

INT: "What shall we call you, what is your name in your native language?"

EBE: "Oh! Now even that isn't easy for me because you will not get the phonetic pronunciations correct without practice. And I am not able to write it down for you because we do not use an alphabetic printed language that I could translate to English easily."

INT: "Why don't you try it out on us anyway?"

EBE: "Of course; Sethlous (or Setimus, or Seck-the-mous) will do; that is the first of four names I am known by. In our written language, this would be shown by a single graphic symbol that would explain my entire lineage."

INT: "Why is your written language so different from ours?"

EBE: "Why is yours so different from the Egyptian of thirty centuries ago? Forgive me, but that is not a simple problem. The group I belong to gave up any identification with any one planet, or it's culture, before your people learned to make fire. There were once thousands of languages, both oral and written, in our many civilizations. It became important to use symbols to represent whole words and even concepts that all of us held in common. Soon your culture will do the same with public signboards at first. Travel and intercommunications of many peoples will always cause this to happen."

INT: "Why are you here?"

EBE: "Specifically to bring you these children. And we like trees."

Y
A
R
K
O
U
T
R
A
N
S
M
I
T
T
E
D

405389

EYES ONLY

DO NOT DUPLICATE

EYES ONLY

:TOP SECRET:

EYES ONLY

EYES ONLY

page 0-2-of-7

INT: "Would you mind expanding on that?"

EBE: "Certainly; in what direction? You see, we would hate to see you blow-up such a pretty little planet; to ruin so many nice trees. If you only knew how hard it is to make a tree from scratch! People are easy - they follow naturally, but not without trees, of course. Green things must be respected above all else except children, and are very much alike."

INT: "What are the intentions of your government by sending you here? WHO sent you and WHY? If this isn't the first time, evidenced by your familiarity with English, why haven't there been official contacts made?"

EBE: "(sigh) In reverse order; what? and be strung-up from one of those beautiful trees? Why? Because you sent us an invitation we could not resist, for our own curiosity, as well as safety. We sent ourselves, or I volunteered - take your pick. And we have no government; we outlawed it, or rather we outgrew it. I suppose you can not outlaw a thing without laws, and those require governments, do they not?"

INT: "I don't understand."

EBE: "I know that. Try laughing. You still will not understand, but you will feel better about your ignorance."

INT: "But that's not good enough! Make me understand!"

EBE: "It will have to suffice. One can not teach until a student wants to learn. How good do you want us to be? I will not harm you. We will not harm you or interfere anymore than you want us to. We are only here to offer what you asked for in a manner we know you will accept; and you did ask us to come and visit."

INT: "When? Who sent for you? Who invited you?"

EBE: "Almost fifty of your years ago, you sent us signals. You were looking for us, and you scared us with a signal you should not have been capable of sending. So we answered. But you didn't understand our answer then, just as you don't now. We do our best to please others. When you didn't respond to our message to you, and you did not come for a visit, we felt that we really ought to stop by and see how you were doing. It has been a long time, and it was the neighborly thing to do, of course. Besides, it was right on the way to another destination; your world, I mean."

INT: "You've been here before?"

EBE: "I know! We were surprised that you had forgotten us!"

TOP SECRET

EYES ONLY

DO NOT DUPLICATE

EYES ONLY

NO DISSEMINATION OR DECLASSIFICATION

:TOP SECRET:

EYES ONLY

EYES ONLY

page D-)-of-7

INT: "I don't see how we could forget you! Are you serious?"

EBC: "Very seldom. But, yes, your culture, which now dominates this civilization, did forget us. Actually, your people seem to have undergone a period of history in which you were so afraid of old truths, that you erased them in favor of religious fantasy. Some of your people remembered us orally in their legends, such as those who speak the Kahuatl, Narragansett, or Athapaskan dialects. They lived where we last visited. But the high point of their cultures is long passed."

INT: "I've never heard of them."

EBC: "Not surprising, your history shows that the conqueror seldom preserves any history of their victims. I speak of the natives in this land mass; those called Indians; mostly on your eastern and southern borders and in the ribbon of land that connects yours to the southern continent. Navahos? Aztecs? Incas? The Olmec's and Toltec's cultures? These were all greater than your own civilization at a time when you were burning witches and killing their cats, which brought a plague that killed millions of your ancestors. Of course, you drove them mad and destroyed them with venereal diseases and smallpox; those you didn't slaughter for their gold."

INT: "Oh."

EBC: "And your social pundits speculate and joke about why we don't land in front of your nation's capitol building and shake hands? We are different, not, insahel!"

INT: "But we have changed. Western civilization is now the leader in this world; for freedom and humanity."

EBC: "Two things; First, we believe that, or we wouldn't be here now. Also; tell that to the millions of Hebrews your western civilization has destroyed in the past decade, or the millions of Negro families whose sons died to stop the madman Hitler, but who do not have plumbing in their homes as we speak. Yes, you make progress; that is hopeful for you. But emotionally you are very different from us. Not primitive, that label would be pure egotism on our parts, but you are very different and frightening to us. We are trying to learn to overcome those differences before your runaway technology thrusts you upon us without choice."

INT: "We have no space travel capability, how could we harm you?"

EBC: "In our terms, you are very close to that point. Do you have small children? Yes? Well, they will grow up in a world where space travel is taken for granted. And before they make you a grandfather, earthmen will be in space."

SECRET REPORT NUMBER

405309

DO NOT DUPLICATE

EYES ONLY

:TOP SECRET:

EYES ONLY

EYES ONLY

page 0-4-of-7

INT: "All right, so you have been visiting us for some time. I have no choice but to accept that, even though I'd love some proof. But you still didn't tell me who sent you the message from Earth that brought you back here?"

EBE: "Funny you should connect those two subjects. If you dig in a place I will show to you on any world map, you will find your proof. Unfortunately, I am now in the wrong country for this, but others of my people will instruct the proper government to dig there if you do not mind. You see, in a remote part of the nation you call Yugoslavia, we visited and helped the people there to build a very advanced culture over seven thousand years ago. It will be found. But there is a beautiful mystery in the fact that the person who sent us your first message forty-nine years ago (1895) did come from this nation originally. His transmission was sent from near here, however, in the state you call Colorado."

INT: "Can you tell us his name? Are there any other proofs of your earlier visits?"

EBE: "Thousands of proofs, if you look around. The scientist I spoke of was an electrical researcher named Nikola Tesla. You are old enough to have heard of him when he was still alive. You know, I just thought of a very good puzzle for someone of you to solve; on an island you named the Isle of Pines in your Pacific Ocean, you will find what is left of a concrete landing platform we built there one hundred and fifteen (115) of your centuries ago. You can not miss finding that, since the footings we put down still cover many acres. Look for those if you would like to; no culture on your planet could have built them at that time. It would be fun for me if you ever locate them, because my great-grandfather helped to pour the mortar for them!"

INT: "What? How long do your people live?"

EBE: "Somewhat too long, I think at times. We have built-up our age somewhat. It would vary, but I was alive when your whole continent was practically a question-mark on the sea charts."

INT: "What about these babies we found with you? Are they human? What are we supposed to do with them?"

EBE: "Raise them, of course, as I would have done. Certainly they are human; perhaps more-so depending on whose definition we use. You are too far away from understanding the whole science of bio-engineering yet for this to be sensible, but just accept that we have sown the seeds of a rich harvest for your culture. And this will continue. They are only children, not monsters. But raise them well, please, because the care of children is one of a few things we do not laugh about."

EYES ONLY

EYES ONLY

DO NOT DUPLICATE

:TOP SECRET:

EYES ONLY

EYES ONLY

page D-5-of-7

INT: "I remember this man, Tesla, you spoke of; he died during the war (1943), but I never heard that he tried to contact other worlds."

EBC: "It was in all the papers, along with the story of how he was always being taken to court by his neighbors for creating lightning which struck their properties. Besides, when Tesla wouldn't answer, we sent a reply to your great inventor, Marconi, that we had arrived for a visit."

INT: "Really? When was this? I'm sure he never reported it!"

EBC: "You see how you hear, but don't really listen? Again, it made all the papers. We'd just arrived here in, oh, 1920 or '22 (it was 1922), and we sent him the letter Y in his own code. It meant that he had visitors! He told everyone that he knew for certain that the signal came from outer space, but nobody really listened. Well, after that we began to figure out that your man Tesla was way ahead of the rest of your science! Even by accident, he shouldn't have learned how to do what he did in his lifetime."

INT: "Why did it take twenty years for you to answer Tesla's message?"

EBC: "It did not. We answered it immediately! Oh! I see! Our arrival took twenty-two (22) years, not twenty, because that is how long it takes to get here from where we were when we got Tesla's invitation."

INT: "So long! You took such a far journey just to find us, and didn't even contact us?"

EBC: "As I said, it was on the way to somewhere else we were planning to visit anyway. Besides, how long or far is all relative, is it not, when we live as long as we do? And you do not see even now that we always live in space. We outgrew our origin worlds many generations ago. In fact, you have to try and understand that you are really living in space too. The only difference is that we left our natural planet and built a new home to go where we wanted. You did the same thing when you left your caves and built huts; and for the same reason. So it's all relative."

INT: "But why not contact us after such a journey?"

EBC: (laughing) "I am sorry! But you still do not see! We did contact you. We are contacting you; all to the limits of your ability to hear our message. I keep telling you that it is relative. Please! Laugh about it! I am trying to explain a limit to your perception which is caused by your limited perception! Do you see the wonderful paradox?"

EYES ONLY

DO NOT DUPLICATE

EYES ONLY

:TOP SECRET:

EYES ONLY

EYES ONLY

page 8-6-of-7

- INT: "If you say so, but such a trip has no purpose in our way of seeing things."
- EBE: "Of course not. That is why we do what we do. Listen now, because this could go on forever if you do not. We are at home where ever we park our craft. It is huge by any standards you could apply. We are concerned because this area of space is one we cross regularly as a simple matter of course, like your campers who vacation at the same place every year. Suddenly we find our camping site threatened by bears! But bears are protected, you are not supposed to hurt them; so you must tame them or give up the whole vacation. Do you see that although you are a long way from travel to other stars, by our standards, you will be overrunning the whole area by the next time our children pass by here? Do you see why it is vital, unless you destroy yourselves first, for us to tame you now, before you come to us? Would you let savage headhunters roam the streets of a city without sending them to school first? We cannot interfere with you anymore than you would interfere with bears in your parks. Someday we would rather you joined us, visited our worlds where we do make camp, and joined us on our long voyage of discovery. Or not. It is your destiny, as long as you do not try and alter ours. Try and grow into our perspective, and all the illogic you question will seem very reasonable. It is all a matter of scale. Centuries instead of decades. Someday you will be just about like us, and you will see. Some new, short-lived species will think you are a crazy metaphysical paradox too. And you will have to learn to treat them gently as children, without letting your egos get in the way."
- INT: "But with your science, you could make any world your own personal paradise; why live in spaceships?"
- EBE: "Yes, and with our weapons we could take what we want as well. But why have one world when you can see them all? You all covet land, a very old idea and only natural when the supply is limited. Just try to accept that we are in paradise when we are seeing and understanding something new. Our god is change and our religion is understanding. Searching for truth is our greatest social challenge and purpose. When you build up your ego, this will become as clear to you as why you must breath air."
- INT: "It sounds like yours is the ideal, perfect world."
- EBE: "No. When you have more years, filling them profitably is a real problem. And the trouble with being a loving species is that you want to prove it by making more of your kind with a partner you love. Of course this must be closely regulated in a culture such as ours, and so relationships of an intimate nature are difficult to leave to one's heart."

EYES ONLY

EYES ONLY

DO NOT DUPLICATE

NO DISSEMINATION OR DECLASSIFICATION

SECRETARY TREASURY NUMBER

405389

:TOP SECRET:

YES ONLY

EYES ONLY

page D-7-of-7

INT: "You speak of the heart being the seat of emotions. This is a concept we use on Earth, but we know it to be a sort of romantic fiction. Why does an advanced race like yours maintain such a notion?"

ESC: "Well, I used that particular expression for your benefit. But why do you object to romance? Your species is driven by little else except romantic vision. Why not ours as well? Certainly our way of life must seem romantic to you? It does to us. We write poems and express ourselves with works of art just as you do. Many of the greatest works of construction on your world were inspired by a joyful effort of our people and yours, in your distant past. We leave these wherever we go. And you romantic creatures have tried for many generations to explain why such huge monuments to human engineering were ever built in the first place. Why, they were built to express the joy of living, of course! And the great sense of satisfaction our people have gotten from working side-by-side with yours has been one of our biggest joys in life. That is another reason for our being here. Surely even a small child can understand such joy?"

INT: "You keep talking about a message for us. Can you define that a little more?"

ESC: "We simply are. We have no deeper purpose than to be. We do not wish direct contact with your people. You would reject us in your present frame of mind. So we seek to be accepted at the lowest level possible, and hence the broadest one possible. That is as a cultural myth; we seek to be the next Santa Claus to put it bluntly. This must come to your people, from your people. The understanding will be given you by the widened perceptive skills of those children we are bringing you. For your sakes this must not come from political or religious leaders. It must flow evenly throughout all the common cultures of the Earth. The message is not that we are here, but that each of you can control where you are going. Be like us, or different; as you choose. But you choose, not your political leaders who believe that only a tiny percent of the elite can rule wisely over their masses; or those who spread fear of death in order to enrich their lives through religion. Knowledge is only good when spread like seeds from which wisdom might grow; and faith has purpose only when it is not created of fear. With faith in the wisdom of truth, and in each other, your world will come to ours soon enough. Our hope is to be able to receive you as friends and equals when you arrive. That is our message. You must do the work for yourselves. If you do, you will keep all the rewards."

SECRET

405389

:TOP SECRET:

EYES ONLY

EYES ONLY

ASSESSMENT OF THE SITUATION
 STATEMENT OF POSITION
 ON
 UNIDENTIFIED FLYING OBJECTS
 PREPARED FOR ENTRY LEVEL MAJIC-121 (EYES ONLY)

SECTION 2

(6 pages)

REC-15

EYES ONLY

EYES ONLY

DO NOT DUPLICATE

:TOP SECRET:

YES ONLY

EYES ONLY

page E-1-of-6

ASSESSMENT OF THE SITUATION

In any attempt to properly assess the present situation as it relates to the issue of national security or the risk of cultural upheaval, it is important to take full advantage of hindsight and historical retrospective. It is both an interesting footnote of history and a key point of reference that the human race itself is directly responsible for its being contacted in this century by beings from other worlds.

Through dialogs with representatives of these alien pilots of the flying disc-crafts, we have learned that our own scientific curiosity led to the visitations which have been ongoing throughout this century.

In 1899, the Yugoslav electrical scientist, Nikola Tesla, most noted for his introduction of alternating current to electrical power transmission and for a laboratory device named after him (the Tesla coil) embarked on a series of researches that have made this the saucer century. Tesla had long proposed that it was possible to directly broadcast pure electrical energies at a distance without loss of power and without wires. By 1899, and with the aid of government and private scientific backing, Tesla had chosen a site near Colorado Springs, Colorado to conduct a massive and never repeated experiment. Nikola Tesla's purpose was to gather the Earth's own magnetic field and to use the Earth as a huge transmitter to send signals to outer space in an attempt to contact whoever might be living there. Tesla had no idea that the specific type of power he had generated was coursing through space and caused great havoc many light years away. Modern science has all but forgotten Tesla's work. The sorts of energies and magnetic waves he was working with were never fully defined or explained and almost all of his original designs are lost or were destroyed by their creator in his later years. But it is now obvious that this single action by a scientific outlaw generated serious concerns among the other intelligences in the near reaches of our galaxy. Although others have attempted to use radio waves to broadcast messages into outer space, none used the energies that Tesla did.

We have now determined by discussion with the extraterrestrials who have contacted this government since 1947 that the type of power Tesla used is a very important form of energy. It has apparently been largely overlooked by modern electrical engineers and physicists although certain information gathered by the Central Intelligence Agency (CIA) indicates a strong program of research of this type inside the Soviet Union. According to the alien sources we have debriefed, Tesla's work was a technical fluke at least one hundred years ahead of its time. Development of these energy fields will only logically occur after we have fully understood laser beam devices.

The extraterrestrials have reportedly been visiting and regularly monitoring the progress of life on Earth for thousands of our years and they were very concerned about this odd signal we sent coursing through space. Among other things, it seems that these energy waves can disturb the process of ecology, alter weather patterns and damage ozone levels in whatever planetary atmosphere they might encounter.

YES ONLY

EYES ONLY

DO NOT DUPLICATE

SECRET REPORT NUMBER

405389

:TOP SECRET:

EYES ONLY

EYES ONLY

page [2-of-6]

Evidently, Tesla was sending huge amounts of an unknown form of energy into space along with his intended signals but was unable to detect these due to the fact that instruments for their measurement did not and do not now exist.

The extraterrestrial intelligences (EI's) attempted to respond to his transmissions in a form of binary code that they routinely use for long range communications (evidently these energies act instantly at a distance and are not limited to the speed of light) and ask that he cease sending. Of course, Tesla had no way of understanding the message he received back from space. Fortunately, the anger of local residents at the side effects of his research forced him to shut down the Colorado Springs experiments in the same year he began them.

This, then, was the actual start of the so-called "flying saucer age" in our times. As it became clear that our people were on the verge of an explosion of technical progress, the EI's decided on a long term program of carefully calculated and seemingly random contact with the eventual goal of raising our awareness of our place in the galactic community. With the advent of the Atomic Age, this program was escalated to include eventual diplomatic contact with many of Earth's governments. The same approach of staging apparent "accidental" contact was chosen for it's low psychological impact on the human race. This was the situation in the case of the United States of America (re: Roswell and Aztec, New Mexico files, this briefing).

The problem with direct contact was stated early in our relationship by one of the extraterrestrial biological entities (EBE's), "Right now there are people on this planet who do not know that your moon circles your world or how long it takes your world to orbit your star (sun). I am not speaking of a small number, but perhaps as many as half of the global population. We have been mistaken for being gods or devils in your past and this sort of slow education is best. As a cultural myth, we stand the best chance of acceptance by the masses of your citizens."

There are now hundreds of compiled studies of the EBEs, their worlds and their objectives. In several cases, volunteers from our armed forces have participated in diplomatic and cultural exchanges during the 1970's and early 1980's and have visited some of the EBE's worlds. The following is a short assessment of the situation as we now understand it.

- There are four basic types of EBEs so-far confirmed; And they are listed here in descending order of their influence on our studies.

A. Earth-like humanoids. There are several variations more-or-less like ourselves. The majority of these are friendly and are the bulk of our EBE contacts. Most have a high degree of psychic ability and all use science and engineering of an advanced nature.

EYES ONLY

EYES ONLY

DO NOT DUPLICATE

: TOP SECRET :

YES ONLY

EYES ONLY

page E-1-of-6

B. Small humanoid or "Greys". The Greys, so-called for the hue of skin possessed by most of this type, are a sort of drone. They are not unlike the worker ants or bees. They are a type of genetic clone (incapable of sexual reproduction. With little or no independent will, they are mostly under the psychic control of the Earth-like humanoids who raise them like pets (or a kind of slave). A detailed explanation of this cultural oddity and it's role in the form of space travel these EBEs employ is addressed elsewhere in this briefing. Assuming the Greys are under benign control, they are harmless.

C. Non-humanoid EBEs. These are in several classes and come from worlds where dominant morphology took a different evolutionary course. Many of these are dangerous not for organized hostile intentions, but because such creatures do not hold human life as sacred. To them, we are animals despite our intelligence. A few are friendly because their cultures forbid all acts against living creatures. Thus far, contact has been minimal with only a handful of unfortunate encounters.

B. Transmorphic Entities. Of all the forms of EBE studied so far by Operation Majestic, these are the most difficult to understand or even to give a description of. Essentially, such entities are not "beings", or "creatures". TEs exist in some other dimension or plane which is to say not in our space or time. They do not use devices to travel in space. Only once has a member of an MJ-12 contact team been privileged to be present when introduced by an Earth-like EBE to a TE. In essence these entities are composed of pure mind energy. They are not unlike "ghostly spirits" and seem to be only curious about our universe. They are said (by other EBEs) to be capable of taking on any physical form that they "channel" their energy into as matter.

* The principle means of travel used by the humanoid EBE is of a mechanical nature and involves very large craft that cannot land on a planet. These employ the forms of energy discovered accidentally by Nikola Tesla to cause themselves to be thrust from or pulled towards the stars they wish to visit. Some alteration or control of the passage of time onboard the intransit craft is used as well.

ANNEX REPORT NUMBER

405389

EYES ONLY

EYES ONLY

DO NOT DUPLICATE

:TOP SECRET:

EYES ONLY

EYES ONLY

page E-4-of-6

- Since the huge interstellar (between stars) craft cannot approach the powerful gravity and magnetic fields of the stars from which they draw their power, they are placed into a "parking orbit" far outside the planetary family (solar system) of any star they approach. This may be millions of miles from the world the EBE's wish to visit. Smaller craft, often but not always disc-shaped, are used to travel the distances remaining. These draw their power and propel themselves by use of "electrogravity". This is a means of balancing a gravity wave against an electromagnetic wave in a manner that generates a third kind of wave similar to that which powers their larger vessels. This journey between worlds takes time in the small craft, and the humanoid EBE's suspend the effects of aging by freezing themselves in small chambers. The psychic powers of the humanoid EBE's are not lessened during this state of "suspended animation", so they are still able to control their craft. Towards that end and to provide for some external control over unforeseeable circumstances while frozen, the humanoid EBE's developed a host/parasite culture thousands of years ago with the small "Grey" EBE's. Since then, these Greys have become an extension of their controller's senses to such a degree that most humanoid EBE's rely heavily on their use at all times. "They are not unlike the symbiotic empathy between a pack of hunting dogs or a team of horses, and their earthly masters - simply like tools or partners in work," explained one EBE.
- During the current wave of interest in our planet by the EBE's, there have been three interstellar craft, or "mother ships" stationed outside our solar system. These have been rotated at twenty-two (22) year intervals since the early 1930's. During a contact debriefing in 1964, an EBE explained that this was no hardship for them. "Our genetic science is about where yours will be in another millennia or two. Although the basic grasp of engineering the GMA will come within another eighty (80) years or so, if you survive as a species. Our friends will still be living when we return home. And most of us bring our families with us so we can watch our children mature." Their family structure is very different from ours and often includes several "models" of each set of parents, specifically engineered to produce offspring of certain mental character adapted to different physical forms needed in their culture. All of these live together as a family unit often as many as would be in a small village or neighborhood in our civilization.

4051100

4051100

EYES ONLY

DO NOT DUPLICATE

EYES ONLY

: TOP SECRET :

EYES ONLY

EYES ONLY

page E-5-of-6

Onboard the "mother ship" almost every race and culture is represented. There is no recognizable form of government behind the actions of these representatives from many worlds. It has been explained that as any species evolves physically, it evolves psychically or spiritually. The outcome of this process is that any form of political organizing, including the politics of religious structure, becomes a "personal moral transgression" of higher shame to any who practice such pursuits, than any good that could come from them. Although this attitude makes any discussion of their faith or beliefs nearly impossible, it has become very clear that most races capable of interstellar travel support the principles of self-determination. In short that there is no empire of conquerors threatening our planet. "A little cross-cultural nudge, like urging a small child to walk towards you, is o.k. But these guys wouldn't let Darth Vader sweep their streets," as a member of a majestic diplomatic task group put it after several years of analysis of contacts.

Many volumes could be written and have been on the details of this on-going contact process. Much of the contact of individual citizens by these EEC's seems absurd on the surface and we remain largely incapable of controlling such contact. The pattern developing, however, seems to indicate that a course of action is not directly needed. Little threat to national security has occurred. In fact, the EEC's have informed us that we are a sort of "protectorate" not unlike a wildlife preserve in their eyes. They will not protect us from ourselves, but are not interested in making us become like them either. There do appear to be forces in outer space that are hostile in the sense that they would exploit us although not conquer us. And we have been informed that a large part of the alien presence on earth is to isolate us from doing any damage to the alien's own culture until we are more morally evolved as a species. With these things in mind we arrive at a statement of official position.

STATEMENT OF POSITION

"In so far as no threat, either implied nor expressed and either of a military, civil or societal nature has been forwarded by the visitation of the association of visiting extraterrestrials against the governments and the peoples of these United States of America; and in so far as great and many cultural and technical advances have been derived by such exchange, we hereby grant full, complete diplomatic status and recognition to these individuals from beyond our world. Furthermore, let it be known that we seek to provide shelter, comfort and aid in all their peaceful endeavors so far as these are respectful of the laws of our land and the right to self-determination and free will expressed in our national constitution. And until such time as the objectives or methods of either parties in this agreement shall deem otherwise, this bond between our peoples shall remain in effect."

AGENCY REPORT NUMBER

405389

DO NOT DUPLICATE

:TOP SECRET:

EYES ONLY

EYES ONLY

page E-6-of-6

The preceding diplomatic treaty was drafted by the directorate of the MAJESTIC-12 operation and a joint committee of extra-terrestrial visitors and representatives of the U.S. Diplomatic Corps, as a statement of intent. It was ratified and signed at Kirtland Air Force Base, Texas on July the eighteenth, 1954 by President Dwight D. Eisenhower and an individual on the behalf of the EBE's.

Each subsequent holder of the executive office has continued to uphold the intent of this policy towards these aliens.

Beyond the statement of intent, basic agreement has been reached on the following negotiated issues:

- The extraterrestrials will refrain where and when possible from open display of their presence to the public at large.
- The extraterrestrials will submit substantiating proof and listings of all persons contacted from among the public at large or that have been removed from the Earth for purpose of contact or cultural exchange. In no case shall anyone abducted by the EBE's be subjected to knowing harm or kept against their will for longer than forty-eight (48) hours.
- The extraterrestrials will avoid any willful contact with representatives of the public news media or any private investigators of the UFO phenomenon, groups or writers dedicated to the same intentions.
- The U.S. government will, provide through the Defense Logistics Agency's Reutilization and Marketing Service such items as needed for the personal comfort of those visiting EBE's who may be sequestered in it's care.
- The U.S. government will provide a section of the MAJESTIC headquarters base in Nevada as an embassy compound for the EBE visitors and equip it to their needs.
- Any exchange of technical, scientific or social information will be conducted item-for-item and in such manner as to assure that both parties have equal gain from the process.

Except for many fascinating details which are available under separate cover through either Operation Majestic (MAJOPSIHQ) or the Defense Intelligence Agency's Office of Counterintelligence, this concludes the assessment of the situation and statement of position section of this preliminary briefing paper.

EYES ONLY

EYES ONLY

DO NOT DUPLICATE
 1
 2
 3
 4
 5
 6
 7
 8
 9
 10
 11
 12
 13
 14
 15
 16
 17
 18
 19
 20
 21
 22
 23
 24
 25
 26
 27
 28
 29
 30
 31
 32
 33
 34
 35
 36
 37
 38
 39
 40
 41
 42
 43
 44
 45
 46
 47
 48
 49
 50
 51
 52
 53
 54
 55
 56
 57
 58
 59
 60
 61
 62
 63
 64
 65
 66
 67
 68
 69
 70
 71
 72
 73
 74
 75
 76
 77
 78
 79
 80
 81
 82
 83
 84
 85
 86
 87
 88
 89
 90
 91
 92
 93
 94
 95
 96
 97
 98
 99
 100
 101
 102
 103
 104
 105
 106
 107
 108
 109
 110
 111
 112
 113
 114
 115
 116
 117
 118
 119
 120
 121
 122
 123
 124
 125
 126
 127
 128
 129
 130
 131
 132
 133
 134
 135
 136
 137
 138
 139
 140
 141
 142
 143
 144
 145
 146
 147
 148
 149
 150
 151
 152
 153
 154
 155
 156
 157
 158
 159
 160
 161
 162
 163
 164
 165
 166
 167
 168
 169
 170
 171
 172
 173
 174
 175
 176
 177
 178
 179
 180
 181
 182
 183
 184
 185
 186
 187
 188
 189
 190
 191
 192
 193
 194
 195
 196
 197
 198
 199
 200
 201
 202
 203
 204
 205
 206
 207
 208
 209
 210
 211
 212
 213
 214
 215
 216
 217
 218
 219
 220
 221
 222
 223
 224
 225
 226
 227
 228
 229
 230
 231
 232
 233
 234
 235
 236
 237
 238
 239
 240
 241
 242
 243
 244
 245
 246
 247
 248
 249
 250
 251
 252
 253
 254
 255
 256
 257
 258
 259
 260
 261
 262
 263
 264
 265
 266
 267
 268
 269
 270
 271
 272
 273
 274
 275
 276
 277
 278
 279
 280
 281
 282
 283
 284
 285
 286
 287
 288
 289
 290
 291
 292
 293
 294
 295
 296
 297
 298
 299
 300
 301
 302
 303
 304
 305
 306
 307
 308
 309
 310
 311
 312
 313
 314
 315
 316
 317
 318
 319
 320
 321
 322
 323
 324
 325
 326
 327
 328
 329
 330
 331
 332
 333
 334
 335
 336
 337
 338
 339
 340
 341
 342
 343
 344
 345
 346
 347
 348
 349
 350
 351
 352
 353
 354
 355
 356
 357
 358
 359
 360
 361
 362
 363
 364
 365
 366
 367
 368
 369
 370
 371
 372
 373
 374
 375
 376
 377
 378
 379
 380
 381
 382
 383
 384
 385
 386
 387
 388
 389
 390
 391
 392
 393
 394
 395
 396
 397
 398
 399
 400
 401
 402
 403
 404
 405
 406
 407
 408
 409
 410
 411
 412
 413
 414
 415
 416
 417
 418
 419
 420
 421
 422
 423
 424
 425
 426
 427
 428
 429
 430
 431
 432
 433
 434
 435
 436
 437
 438
 439
 440
 441
 442
 443
 444
 445
 446
 447
 448
 449
 450
 451
 452
 453
 454
 455
 456
 457
 458
 459
 460
 461
 462
 463
 464
 465
 466
 467
 468
 469
 470
 471
 472
 473
 474
 475
 476
 477
 478
 479
 480
 481
 482
 483
 484
 485
 486
 487
 488
 489
 490
 491
 492
 493
 494
 495
 496
 497
 498
 499
 500
 501
 502
 503
 504
 505
 506
 507
 508
 509
 510
 511
 512
 513
 514
 515
 516
 517
 518
 519
 520
 521
 522
 523
 524
 525
 526
 527
 528
 529
 530
 531
 532
 533
 534
 535
 536
 537
 538
 539
 540
 541
 542
 543
 544
 545
 546
 547
 548
 549
 550
 551
 552
 553
 554
 555
 556
 557
 558
 559
 560
 561
 562
 563
 564
 565
 566
 567
 568
 569
 570
 571
 572
 573
 574
 575
 576
 577
 578
 579
 580
 581
 582
 583
 584
 585
 586
 587
 588
 589
 590
 591
 592
 593
 594
 595
 596
 597
 598
 599
 600
 601
 602
 603
 604
 605
 606
 607
 608
 609
 610
 611
 612
 613
 614
 615
 616
 617
 618
 619
 620
 621
 622
 623
 624
 625
 626
 627
 628
 629
 630
 631
 632
 633
 634
 635
 636
 637
 638
 639
 640
 641
 642
 643
 644
 645
 646
 647
 648
 649
 650
 651
 652
 653
 654
 655
 656
 657
 658
 659
 660
 661
 662
 663
 664
 665
 666
 667
 668
 669
 670
 671
 672
 673
 674
 675
 676
 677
 678
 679
 680
 681
 682
 683
 684
 685
 686
 687
 688
 689
 690
 691
 692
 693
 694
 695
 696
 697
 698
 699
 700
 701
 702
 703
 704
 705
 706
 707
 708
 709
 710
 711
 712
 713
 714
 715
 716
 717
 718
 719
 720
 721
 722
 723
 724
 725
 726
 727
 728
 729
 730
 731
 732
 733
 734
 735
 736
 737
 738
 739
 740
 741
 742
 743
 744
 745
 746
 747
 748
 749
 750
 751
 752
 753
 754
 755
 756
 757
 758
 759
 760
 761
 762
 763
 764
 765
 766
 767
 768
 769
 770
 771
 772
 773
 774
 775
 776
 777
 778
 779
 780
 781
 782
 783
 784
 785
 786
 787
 788
 789
 790
 791
 792
 793
 794
 795
 796
 797
 798
 799
 800
 801
 802
 803
 804
 805
 806
 807
 808
 809
 810
 811
 812
 813
 814
 815
 816
 817
 818
 819
 820
 821
 822
 823
 824
 825
 826
 827
 828
 829
 830
 831
 832
 833
 834
 835
 836
 837
 838
 839
 840
 841
 842
 843
 844
 845
 846
 847
 848
 849
 850
 851
 852
 853
 854
 855
 856
 857
 858
 859
 860
 861
 862
 863
 864
 865
 866
 867
 868
 869
 870
 871
 872
 873
 874
 875
 876
 877
 878
 879
 880
 881
 882
 883
 884
 885
 886
 887
 888
 889
 890
 891
 892
 893
 894
 895
 896
 897
 898
 899
 900
 901
 902
 903
 904
 905
 906
 907
 908
 909
 910
 911
 912
 913
 914
 915
 916
 917
 918
 919
 920
 921
 922
 923
 924
 925
 926
 927
 928
 929
 930
 931
 932
 933
 934
 935
 936
 937
 938
 939
 940
 941
 942
 943
 944
 945
 946
 947
 948
 949
 950
 951
 952
 953
 954
 955
 956
 957
 958
 959
 960
 961
 962
 963
 964
 965
 966
 967
 968
 969
 970
 971
 972
 973
 974
 975
 976
 977
 978
 979
 980
 981
 982
 983
 984
 985
 986
 987
 988
 989
 990
 991
 992
 993
 994
 995
 996
 997
 998
 999
 1000
 1001
 1002
 1003
 1004
 1005
 1006
 1007
 1008
 1009
 1010
 1011
 1012
 1013
 1014
 1015
 1016
 1017
 1018
 1019
 1020
 1021
 1022
 1023
 1024
 1025
 1026
 1027
 1028
 1029
 1030
 1031
 1032
 1033
 1034
 1035
 1036
 1037
 1038
 1039
 1040
 1041
 1042
 1043
 1044
 1045
 1046
 1047
 1048
 1049
 1050
 1051
 1052
 1053
 1054
 1055
 1056
 1057
 1058
 1059
 1060
 1061
 1062
 1063
 1064
 1065
 1066
 1067
 1068
 1069
 1070
 1071
 1072
 1073
 1074
 1075
 1076
 1077
 1078
 1079
 1080
 1081
 1082
 1083
 1084
 1085
 1086
 1087
 1088
 1089
 1090
 1091
 1092
 1093
 1094
 1095
 1096
 1097
 1098
 1099
 1100
 1101
 1102
 1103
 1104
 1105
 1106
 1107
 1108
 1109
 1110
 1111
 1112
 1113
 1114
 1115
 1116
 1117
 1118
 1119
 1120
 1121
 1122
 1123
 1124
 1125
 1126
 1127
 1128
 1129
 1130
 1131
 1132
 1133
 1134
 1135
 1136
 1137
 1138
 1139
 1140
 1141
 1142
 1143
 1144
 1145
 1146
 1147
 1148
 1149
 1150
 1151
 1152
 1153
 1154
 1155
 1156
 1157
 1158
 1159
 1160
 1161
 1162
 1163
 1164
 1165
 1166
 1167
 1168
 1169
 1170
 1171
 1172
 1173
 1174
 1175
 1176
 1177
 1178
 1179
 1180
 1181
 1182
 1183
 1184
 1185
 1186
 1187
 1188
 1189
 1190
 1191
 1192
 1193
 1194
 1195
 1196
 1197
 1198
 1199
 1200
 1201
 1202
 1203
 1204
 1205
 1206
 1207
 1208
 1209
 1210
 1211
 1212
 1213
 1214
 1215
 1216
 1217
 1218
 1219
 1220
 1221
 1222
 1223
 1224
 1225
 1226
 1227
 1228
 1229
 1230
 1231
 1232
 1233
 1234
 1235
 1236
 1237
 1238
 1239
 1240
 1241
 1242
 1243
 1244
 1245
 1246
 1247
 1248
 1249
 1250
 1251
 1252
 1253
 1254
 1255
 1256
 1257
 1258
 1259
 1260
 1261
 1262
 1263
 1264
 1265
 1266
 1267
 1268
 1269
 1270
 1271
 1272
 1273
 1274
 1275
 1276
 1277
 1278
 1279
 1280
 1281
 1282
 1283
 1284
 1285
 1286
 1287
 1288
 1289
 1290
 1291
 1292
 1293
 1294
 1295
 1296
 1297
 1298
 1299
 1300
 1301
 1302
 1303
 1304
 1305
 1306
 1307
 1308
 1309
 1310
 1311
 1312
 1313
 1314
 1315
 1316
 1317
 1318
 1319
 1320
 1321
 1322
 1323
 1324
 1325
 1326
 1327
 1328
 1329
 1330
 1331
 1332
 1333
 1334
 1335
 1336
 1337
 1338
 1339
 1340
 1341
 1342
 1343
 1344
 1345
 1346
 1347
 1348
 1349
 1350
 1351
 1352
 1353
 1354
 1355
 1356
 1357
 1358
 1359
 1360
 1361
 1362
 1363
 1364
 1365
 1366
 1367
 1368
 1369
 1370
 1371
 1372
 1373
 1374
 1375
 1376
 1377
 1378
 1379
 1380
 1381
 1382
 1383
 1384
 1385
 1386
 1387
 1388
 1

:TOP SECRET:

EYES ONLY

EYES ONLY

APPENDIX

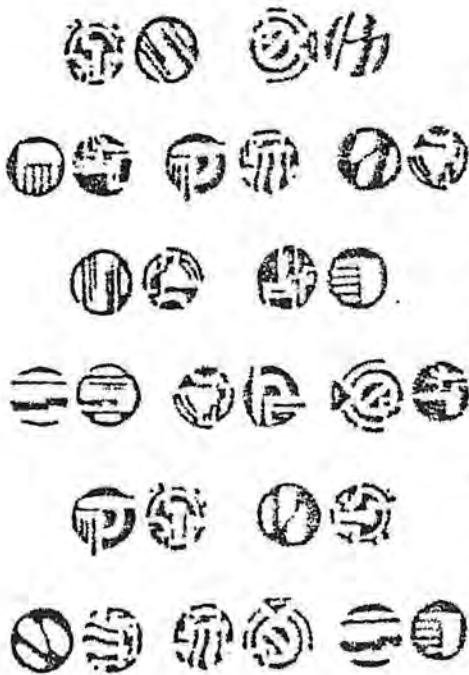
AGENCY REPORT NUMBER

405389

: TOP SECRET :

EYES ONLY

EYES ONLY



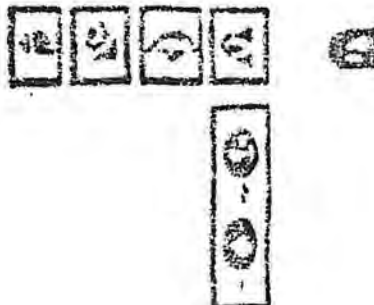
TYPE B. CONCEPT ICONS (Complete Story Told)



TYPE C. NUMERICAL LANGUAGE



TYPE A. WORD ICONS
(On Control Panel)



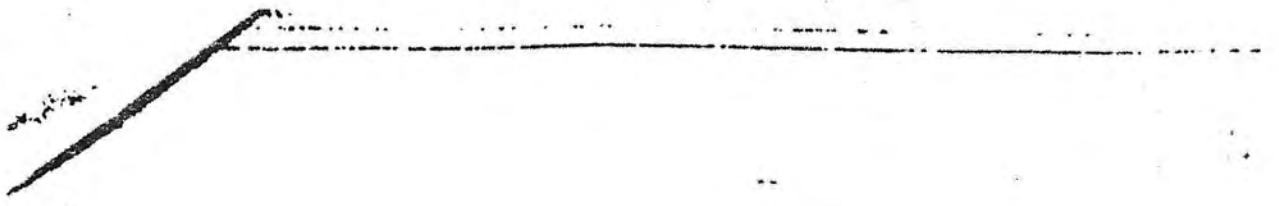
APPENDIX: Artist's rendering of pictographic icon writing from Assoc. W.I. disc. draft.

205076

EYES ONLY

EYES ONLY

DO NOT DUPLICATE



PROPERTY
OF
U. S. GOVERNMENT



INTENTIONAL MISUSE MAY RESULT IN FINE, IMPRISONMENT, OR BOTH.

DO NOT REMOVE FROM PREMISES