

**A STUDY OF
HEALING AND REGENERATION
THROUGH POLARITY**

FOR RESEARCH ONLY

By JOHN F. CRANE, JFC CORP.

HEALING AND REGENERATION THROUGH POLARITY



BY JOHN F. CRANE; JFC CORP.
4246 Pepper Drive,
San Diego, California, 92105

BALANCED POLARITY EQUALS BALANCED HEALTH
POLARIZE TO CORRECT YOUR BODY'S POLARITY

FIRST EDITION

Polarity publication taken from
"ELECTRON THERAPY" Copyrighted
1968 by John F. Crane, JFC Corp.
Library of Congress Catalogue
Card Number 78-72588

Copyrighted by John F. Crane, 1979
for John F. Crane Corporation
PUBLISHED IN U.S.A.

BEFORE TOUCHING ANY PERSON OR BEFORE AND DURING ANY OPERATION
DOCTORS SHOULD WEAR POLARIZERS TO PREVENT DEATH FROM NEGATIVE
POLARITY and all operating instruments must be polarized positive
AS WELL AS THE OPERATING TABLE AND ALL CONNECTING INSTRUMENTS.
In the old days doctors didn't wash their hands; today they do
not polarize for the same reason.

P R E F A C E

When one thinks of polarity, polarized light generally comes to mind, not the accumulation of electron charges that continually come from every cell in your body. It is a miracle of modern technology, whose magic in the human body cannot be exceeded.

Of the billions of body cells producing electrons for the support of a useful potential energy level in the brain which controls the movement of some 430 muscles that could never move internally and externally if the electrons did not activate them. The brain is a computer which receives data and is programmed by all the senses. It can store over six billion items of information. All six billion items can be extracted by induced stimulation. In sleep or in other states the potential energy level accumulates. When negative polarity takes over, life ceases with it. Your own polarity, when it gets too negative, will seal your fate.

An audio frequency pacemaker, a miniature frequency instrument located inside the wall of the right atrium emits a series of 60 to 80 pulses per minute or approximately 1 Hertz plus which cause the heart to pump blood through the arteries by audio stimulation which is hooked up direct and is far more vigorous than an indirect connection. Without polarity signals sensing a balance of a lateral differential pressure within our head, our sense of balance would be lost. Everything we feel and discern must be converted into electron use and conductivity to the brain before the brain will respond. A well regulated feedback loop consisting of electronic polarity functions through the autonomic nervous system to regulate all organs.

Biomedical technology is retarded because little is taught in medical schools about polarity, electronics and biofeedback. The use of the electron and polarity can reveal advance clues to every known disease and malfunction. The electronics revolution presents a vital need for bioelectronic and biomagnetic and biocosmic men who understand the concepts, who can operate and maintain electron type instruments and who can communicate with doctors who must begin to relearn advanced polarity in order to beat the killer diseases which the drugs, radiation, x-rays and unpolarized surgery have caused at a cost of \$200-billion per year.

Polarity holds the keys to health and after working with it for 28 years, it has been demonstrated by Royal R. Rife, before me, from 1920 and on, to have decisive benefits for all natural science. In serious scientific research there is an obligation to recognize facts which the government and the Food and Drug Administration have refused to do to the unfortunate demise and suffering of millions of citizens all over the world. It has been neither proper or possible for me to evade the issues or the facts. In time the vital and enormous significance of these facts will be recognized and the real civil rights violators, as usual, will be let off Scot-free. We have billions for drugs and radiation but not one cent allowed for master controlling polarity.

John F. Crane

Contents :

	Page
Electron Therapy puts the Cell's Own Electrons to Work	1
Polarity Definitions, Flow of Electron Charges, Flow of Electron Charges from Electro-magnetic Energy Cycles, Flow of Electrostatic Field, Flow of Magnetic Field;	
Review of Polarity Postulates; Physiology of the Human Cell; Polarity Manipulates Body Functions	1
Two Major Polarity Junctions; Basic Body Polarity Poles; A Few Benefits from Polarity; The Polarity Brotherhood and Aid	2
Death starts in the Colon; Polarize Food Positive; Electron Polarity Therapy	3
Congestion and Pollution Relieved by Electron Therapy; Negative Polarity Pollution; Polarize to Achieve Strength	4
Polarity Regeneration (CHART) By Dilation, Constriction, Stimulation and Contraction	5
General Discussion on Magnetic Therapy	6
Background Research on Magnetotherapy	7
Biocosmic Energy from Pyramids & Electromagnetism	9
Frequency Instrument for Magnetotherapy	10
Scientific Breakthrough in Treatment with Polarizers	14
The Polarity is negative when the Body is not Well	15
Application of Positive Polarity to Food and Drink	16
The Effect of Polarity on Heart Attacks, blood Clots and Diseases	17
Heart Attacks	18
Potential Energy Level of Body Determines Polarity	19
Effect of Radionics on Polarity and Polarization Charges	20

The Intensity of Polarity Can Indicate the Degree of Body Health	Page 22
Polarity Function in the Human Anatomy	24
Selected Points for Injection for Appropriate Treatment can best be Studied by the Following Diagrams	25
An Outline of the Theory & Practice for Polarity Therapy in the Human Body	
Location for Injection of Polarity by Means of Reference Letters	26
Explanation of Selection Points for injection of Positive and Negative poles	
Section of the Skin of the Body - The Integument	27
Control of Expansion and Contraction of Blood Vessels	28
Epistemology. Health and Ill Health	29
The Causation of Disease - Improper Cultivation	30
Immaturity - The Alkaline Colon	31
Successive Chills to the Skin	32
General Observations	34
Summary	37
Diagnosis	38
Ancillary Methods of Diagnosis	39
Diagram of Nerves of Upper Right Arm - Anterior Aspect	40
Diagram of Nerves of Upper Right Arm - Posterior Aspect	41
Diagram of Nerves of Lower Right Leg - Anterior Aspect	42
Diagram of Nerves of Lower Right Leg - Posterior Aspect	43
Diagram of Body Distribution of Cutaneous Nerves - Front	44
Diagram of Body Distribution of Cutaneous Nerves - Rear	45
Diagram of Body Muscles - Front View - Biofeedback	46
Electro Physical Therapy Chart - Sympathetic Nervous System showing stimulation areas to regenerate polarity	47
Diagram of Different Forms of Electricity - Chart No. 1	48
Application of Polarity to the Torso area	

Chart No. 2 and 3: Torso and Forearm Areas	Page 49
Chart No. 4 and 5: Lower Left Leg and Head Area	50
Muscle, Posterior and Anterior of Left Leg	51
Muscle, Posterior and Anterior of Left Arm	52
Muscle, Posterior and Anterior of Left Upper Torso	53
Advantages of using polarity	54
Electron Therapy Polarizer Polarity Energy Regeneration	
APPLICATION OF POLARIZED ENERGY TO BALANCE THE COSMIC LIFE FORCES	
WHAT IS ELECTRON THERAPY?	
APPLICATIONS WITH POLARIZERS [Use Chart]	55
Index	57

ELECTRON THERAPY PUTS THE CELL'S

OWN ELECTRONS TO WORK !

Polarity Definitions:

Unlike charges attract.

- (1) Sun to earth; North seeks South
- (2) Positive pole to negative pole

Like polarity charges repel

- (1) Positive repels positive
- (2) Negative repels negative

Flow of electron charges.

- (1) Positive: more electrons flow in a clockwise direction than counter-clockwise
- (2) Negative: more electrons flow in a counter-clockwise direction than clockwise. With pendulum, normal rotation would be counter-clockwise; opposite for positive predominant energy flow pattern.

Flow of electron charges from Electro-magnetic energy cycles.

- (1) Negative flows to positive
- (2) Electric flows are horizontal;
- (3) Magnetic flows are vertical with respect to treated object
- (4) circular flow spirals from origin of polarity direction.

Flow of electrostatic field.

- (1) Negative flows to positive between flat metal surfaces and flow in slightly curved paths at all edges.
- (2) Electrons flowing at right angles are equipotential lines of force to create any desired patterns.

Flow of magnetic field.

- (1) Positive(South)to Negative North with radiating circular fields from North to South
- (2) random when uncharged.

Flow of a conductor.

- (1) Negative flows to positive
- (2) Looking south, flow is counter-clockwise in a circular path series of patterns and is attracted by north pole of a compass.

REVIEW OF POLARITY POSTULATES

- (1) Polarity is the cause of disease. Control of polarity can eliminate disease, pain and suffering.
- (2) Polarity can be changed by means of polarizers which consist of magnets using high strength magnetic or electromagnetic energy forces.
- (3) Polarity can polarize bacteria so they can't reproduce and expire in about 5 days.
- (4) Polarity stays negative when infection persists. Health is improved with balanced polarity.
- (5) Polarity prevents decay and makes food less perishable for longer time periods with continued use.
- (6) Polarity in food must be changed to positive for better taste, quality, and digestion. All food grown in the soil is negative. Polarity is normally polarized positive in two minutes.

PHYSIOLOGY OF THE HUMAN CELL

The function of the human cell is oxidation and reduction accompanied by the giving off of electrons to charge up the nervous system and some minor excretion.

The cosmic energy frequency from the sun 24 hours per day is the highest frequency known to exist. It is in the billions of cycles per second. All cells are aided by cosmic energy transmissions through the body.

POLARITY MANIPULATES BODY FUNCTIONS

Polarity seeks a balance in body.

Two opposing cell forces are:
Tension causing expansion of
the cells by overwork and,
Compression caused by cell re-
laxation or contractions.

TWO MAJOR POLARITY JUNCTIONS

Electron energy governs all
body movements directed from the
brain. The brain being the posi-
tive pole in woman and the nega-
tive pole in man. The opposing
pole from the brain is the solar
plexus which is negative in
woman and positive in man. For
benefits apply polarizers or
frequency instruments using the
proper polarity. Check blood
pressure and pulse before and
after to see results. Reverse
poles if desired. Then recheck
for improvement or use other
monitors.

BASIC BODY POLARITY POLES

In addition to those given
above the male reproductive or-
gan is positive while the female
is negative. For both male and
female the following apply:
Outside right hand - positive
Inside right hand - negative
right knee cap - - ~~negative~~
left knee cap - - - positive
right breast - - - negative
left breast - - - positive
right eye - - - - negative
left eye- - - - - positive

Note: the above parts are
"looking forward".
Polarity remains the same for
both left & right handed people.

A FEW BENEFITS FROM POLARITY

Control of spasms all over
Control of sinus infections
Control of asthma attacks
Better fertility in man
Elimination of blood clots

Control of stomach stress
Control of hypertension
Control of kidney functions
Control of gastric secretions
to eliminate ulcers
Polarization of blood positive
Control of labor
Control for shorter menstration
Control of inflammation & swelling
Control of arthritis
Control of nerve ailments
Control of allergy
Control of high blood pressure
Control of cell reactivation
Control of diseases

THE POLARITY BROTHERHOOD & AID

Polarity energy enlivens all forms
of cells and sustains them by linking
them together in cohesive electronic
bonds. Life is nourished by polarity
energy flowing in the nervous system,
flowing in the blood activated by an
electrolyte of salt. The blood takes
poison and dirt from the lymph system
into organs and waste outlets.

Negative polarity can be readily
reversed by a sufficient higher con-
centration of positive polarity to
overcome it. This has been accomplish-
ed by polarizers, frequency instrumens,
pulsors, electromagnetic pulsed pyra-
mids and Rife ray tubes using electron
therapy. Such instruments have been
proven to control diseases and bring
the body back to a healthy state.
These instruments rebuild and repair
body cells when properly applied.

Their use builds up the potential
energy level of every cell in the
body to a proper level through the
miracle of electron therapy. There is
no longer any need to fear germs.

Many persons have developed fears of germs causing them to use drugs and nicotine to excess resulting in sickness, weakness, with excessively negative polarity.

DEATH STARTS IN THE COLON

Intestines provide areas that nourish germs for digestion of foods. Negative polarity can cause germs to be destructive when enzymes are overheated and rendered useless. Pesticides and preservatives are other poisons that plague the body from rancid and polluted foods. Water, loaded with hard minerals and inorganic salts does not support good health.

Colon bacteria that protect us from diseases is acidophilous. Such bacteria grow in highly acid media. Foods that are very acid may help the culture. Digestion of meat can be aided by positive polarity. After electron therapy treatments, acidophilous should be taken orally or by the pint in enema irrigation for 20 minutes.

Constipation is often caused by hard water. Elimination is aided by proper polarity and exercise. Negative polarity in positive areas causes body aches, distress- headaches, tension and reduced oxidation and reduction of the body cells which blocks the production of positive electrons. Idleness causes decay and cell degeneration, while exercise and body movements create electrostatic energy that charge electrons for stronger energy levels.

POLARIZE FOOD POSITIVE

With proper polarized eating, the normal life span should be increased to 150 years. Just as in batteries, the amount of acid aids control of heat interchange in the electrolyte. pH or degree of hydrogen ion concentration of acids and alkalis we eat and drink controls temperature,

polarity, frequency in cycles per second that the body operates with and governs the increase or decrease of potential body energy levels of microvolts.

The brain uses electron energy to control all body movements. The cerebellum being the positive pole in woman and the negative pole in man. For good health: keep the head cool, feet warm, drink distilled water, maintain positive polarity overbalance, keep the waste outlets open, let sunshine in and when in distress, use electron therapy and polarize.

Food, eaten to sustain life, should be mostly uncooked to prevent the destruction of enzymes and all food and drink is negative as it comes from earth which is negative. The polarity should be changed to positive.

Polarizing food and drink positive before digestion has been found to improve taste, quality, and to neutralize harmful negative poisons. Polarizing food and drink positive is to improve digestion, to aid in establishing better sleep, and to aid in attaining better health.

Maintaining a good state of body polarity balance through polarized raw foods and liquids may prove to be the best protection to recover and for preventative treatments for excellent health.

The cause of bad breath starts with negative polarity from negative nutrients which set up germ odor. See Reprint No. 77 from Lee Foundation at 3 cents each.

ELECTRON POLARITY THERAPY

Excess negative polarity results in hypertension, fever, redness, swelling, and heat beyond normal in any gland, area or organ. Sensitive thermometers pinpoint these areas. Heat causes exhaustion & expansion. A weak right pulse and a strong left pulse are signs of incorrect polarity out of balance which can cause devastation and famine in the related area. The brain, spinal cord and sympathetic centers are in a state of hunger for lack of oxygen

and nutrients from the blood. The correction of polarity can help by polarizing the blood to increase the flow of oxygen in the blood stream which releases the roadblocks along the way of negative pileups and neutralizes the negative charges that restrict the flow of blood and that prevent the valves from working at their peak efficiency. These valves are particularly noticeable in varicose veins.

CONGESTION AND POLLUTION RELIEVED BY ELECTRON THERAPY

If you suffer it may be due to congestion. Forces of attraction and tension fight with nervous energy contraction and repulsion and neither is strong enough to eliminate the poisons and ferments of food and drink. You can become an alcoholic merely by eating fruits and vegetables at the same meal and reap the results of their fermentation later.

Electron therapy reactions increase blood circulation and the polarization of the blood gives easier blood flow.

Electron therapy provides resuscitation, cell rebuilding to activate dormant body and blood cells that do not function and also acts as an aid to germ control that start diseases.

Pollution comes to us in many forms: from sustained high noises, from too much heat or cold, from radiation and from polluted water and food that is grown from depleted soils or from soils that are overconcentrated with chemicals that we cannot assimilate. Lobsters, crab and shrimp often have 40 times more iodine than the body can assimilate thereby causing sickness in glands, etc.

NEGATIVE POLARITY POLLUTION

Negative pollution comes to us from things we touch all day long to our demise from electro-

static discharges, from electromagnetic discharges and from other polarity discharges that affect our polarity balance. Negative attractors are aluminum in the form of pots and pans and containers, plastic and glass.

Negative pollution comes from pesticides, telephone contact, television contact, touching your automobile, your typewriter, your computer, stereo, kitchen appliances, vacuum cleaners, refrigerators, microwave ovens, blenders, and electronic gadgets of all types. These units can be neutralized with polarizers sitting on top or at the side of them to protect you.

Color pollution is very common coming to you from objectionable colors that you see or have to live with. Red is particularly disturbing. The eyes are fatigued by excessive light intensity pollution and while driving on the highway both day and night with continual concentrations of lights glaring into your eyes.

Electromagnetic pollution is constantly bombarding you day and night from radar, radio stations, the electrical fields around your house wiring, from sonic and ultrasonic devices, from trains, from planes, from radiation that is harmful.

Adverse body polarity causes tension, weakness, frustration, and other side effects. Contact with sicker people also discharges your positive polarity and you must repolarize to replace it.

POLARIZE TO ACHIEVE STRENGTH

A weak body can be made strong by applying a negative polarity of the polarizer over the adrenal glands adjacent to the kidneys on the left side of the body above belt level. Raise the right arm to the horizontal sideways position before and after to check the increase of strength. If the increase is not apparent, reverse the polarizer poles and try it again. Exercise is an energy builder and should be used.

POLARITY REGENERATION BY DILATION, CONSTRICTION,
STIMULATION AND CONTRACTION

H O W T O P O L A R I Z E P R E S S U R E P O I N T

A R E A S F O R R E G E N E R A T I O N H E A L I N G

Time----		Cosmic or Magnetic Units: 5 Min. to 5 Hrs.					
MEDIUM POLARIZED - TIME		CYCLES PER SECOND OR HERTZ BY USE OF:					
IN AREA OF (Ray 30 sec. ea)		RIFE RAY	FREQUENCY	COSMIC	MAGNETIC		
LOCATION (Freq. Inst. 2 min)		TUBE INSTR.	INSTRUMENT	POLARIZER	POLARIZER		
			R Left	R Left	R Left		
BRAIN-----	20 to 2K	20	Neg.	POS	Neg.	POS	Neg.
EYES-----	20	20	Neg.	POS	Neg.	POS	Neg.
EARS-----	20 to 880	Same	Neg.	POS	Neg.	POS	Neg.
NOSE-----	20 to 880	Same	Neg.	POS	Neg.	POS	Neg.
LARYNX-----	20 to 880	Same	Neg.	POS	Neg.	POS	Neg.
LUNGS-----	9	Same	Neg.	POS	Neg.	POS	Neg.
HEART-----	20 to 162	Same	Neg.	POS	Neg.	POS	Neg.
PULSE-----MEN-----	70 to 72	Same	Neg.	POS	Neg.	POS	Neg.
PULSE-----WOMEN-----	78 to 82	Same	Neg.	POS	Neg.	POS	Neg.
PINEAL-----	20	Same	Neg.	POS	Neg.	POS	Neg.
STOMACH-----	20	Same	Neg.	POS	Neg.	POS	Neg.
ADRENAL (Near Kidneys)-----	10	Same	Neg.	POS	Neg.	POS	Neg.
PANCREAS-----	15	Same	Neg.	POS	Neg.	POS	Neg.
SPLEEN (Left side under arm)	20	Same	Neg.	POS	Neg.	POS	Neg.
SMALL INTESTINE-----	10 to 880	Same	Neg.	POS	Neg.	POS	Neg.
LARGE INTESTINE-----	10 to 880	Same	Neg.	POS	Neg.	POS	Neg.
COLON-----	20 to 880	Same	Neg.	POS	Neg.	POS	Neg.
APPENDIX-----	10 to 880	Same	Neg.	POS	Neg.	POS	Neg.
OVARIES-----	1 to 880	Same	Neg.	POS	Neg.	POS	Neg.
TESTES-----	1 to 880	Same	Neg.	POS	Neg.	POS	Neg.
LYMPH GLANDS-----	10 to 880	Same	Neg.	POS	Neg.	POS	Neg.
KIDNEYS-----	8 to 880	Same	Neg.	POS	Neg.	POS	Neg.
THYROID-----	20 to 160	Same	Neg.	POS	Neg.	POS	Neg.
ADENOID GLANDS-----	20 to 880	Same	Neg.	POS	Neg.	POS	Neg.
PROSTRATE-----	20 to 2K	Same	Neg.	POS	Neg.	POS	Neg.
TONSILS-----	20 to 880	Same	Neg.	POS	Neg.	POS	Neg.
MUSCLES-----	20 to 240	Same	Neg.	POS	Neg.	POS	Neg.
WORMS-----	60 to 125	Same	Neg.				
STROKE-----	20	Same	Neg.	POS	POS	POS	POS
APOPLEXY; PARALYSIS-----	20	Same	Neg.	POS	POS	POS	POS
CRAMPS-----	26	Same	Neg.	POS	POS	POS	POS
FEVER; SUNSTROKE-----	20 to 880	Same	Neg.	POS	Neg.	POS	Neg.
SYPHILIS; GONORRHEA-----	600 to 700	Same	Neg.	NEG	Neg.	NEG	Neg.
BLOOD (Over heart area)-----	20 to 2.2K	Same	Neg.	POS	POS	POS	POS
BRAIN WAVES - ALPHA STATE--	13 to 18	Same	Neg.	POS	Neg.	POS	Neg.
BRAIN WAVES - BETA STATE--	14 to 30	Same	Neg.	POS	Neg.	POS	Neg.
BRAIN WAVES - DELTA STATE--	.5 to 3.5	Same	Neg.	POS	Neg.	POS	Neg.
BRAIN WAVES - THETA STATE--	4 to 7	Same	Neg.	POS	Neg.	POS	Neg.
STAPHYLOCOCCUS-----	725 to 730	Same	Neg.	POS	Neg.	POS	Neg.
PNEUMONIA-----	770 to 780	Same	Neg.	POS	Neg.	POS	Neg.
STREPTOTHRIX (FUNGI)-----	781 to 790	Same	Neg.	POS	Neg.	POS	Neg.
E-COLI; TUBERCULOSIS ROD---	799 to 804	Same	Neg.	POS	Neg.	POS	Neg.
STREPTOCOCCUS-----	875 to 885	Same	Neg.	POS	Neg.	POS	Neg.
TUBERCULOSIS VIRUS-----	1.5K to 1.6K "	Neg.		POS	Neg.	POS	Neg.
THYPHOID VIRUS-----	1.5K to 1.6K "	Neg.		POS	Neg.	POS	Neg.
SARCOMA VIRUS-----	2 K to 2.1K "	Neg.		POS	Neg.	POS	Neg.
CARCINOMA VIRUS-----	2120 to 2130 "	Neg.		POS	Neg.	POS	Neg.

GENERAL DISCUSSION ON MAGNETIC THERAPY

The treatment of the human body by electromagnets shows great promise in balancing the negative and positive polarity as required for good health. Where excessive build-up of human magnetized fields has been established, causing pain, relief can also come from demagnetization from advanced techniques.

The American Medical Association has retarded progress by claiming that all such treatments are false, and suppresses all results, and yet medicine is defined as "all devices" under their controlled Food and Drug Regulations. Magnetic belts and small permanent magnets were worn in various places on the body in the past with various results but the potential energy level is not believed sufficient to provide the desired relief.

In 1916 Albert Abrams, M.D., stated that electromagnetic and alternating magnetic energy of low power, properly tuned and applied discloses and assists the body to normalize diseased tissue. The A.M.A. fought him in court and he was beaten; the ensuing years of vicious suppression finally took their toll on Abrams and Fred Hart who had to give up.

At San Diego, from 1913 to 1960, Royal R. Rife also worked with electromagnetic and cosmic energy to cure cancer and practically every other major incurable disease. In 1920 Rife discovered an electronic defense or blockade in the human body against virus diseases and continued his work in the Rife Research Laboratory which became

internationally famous and equally suppressed by the A.M.A. Rife hit the virus with resonant frequencies that killed them instantly without harm to human cells. He discovered that cells could be made immune by giving them the right kind of electronic defense. Rife worked with thousands of cultures and the basic bacteria E. Coli. Rife used the electrical charges as electrostatic electrocuting weapons against the virus and found that when they were all positive or all negative, no reproduction was possible. Rife's 10,000X to 50,000X optical prismatic microscopes built only for his research could readily see the viruses of all diseases and readily stain them with his variable light frequency spectrum control in their own true colors. Rife's Universal Microscope, published by the Franklin Institute and in the Annual Report of the Smithsonian Institution of the United States Government by R. E. Seidel, M.D., explained that cancer and other infectious diseases were observed to succumb under the Universal Microscope by the use of Rife's electromagnetic electron therapy device.

In Dorland's Illustrated Medical Dictionary (23rd Ed. p. 789) a magnet or electromagnet is used for removing particles of iron or other metals from the eye (or other body parts). Magnetism is described as magnetic attraction or repulsion (negative or positive polarity) and also having a hypothetical nervous power which can be transferred to another person for curative or other purposes. Magnetoo constriction is a change in the body dimensions produced by a magnetic field. Magnetropism is the turning of the direction of growth or an organism under the influence of a magnet. Magnetotherapy is the treatment of disease by magnets or by magnetism.

Aurthur Yale, M.D., used Rife's Ray Tube Frequency Instruments for 22 years and attained outstanding results against venereal diseases, cancer, and all types of diseases. Yale set up the Yale Electronic Medical Foundation and built dozens of the Rife Frequency Instruments to help people.

James B. Couche, M.D., used Rife's Ray Tube Frequency Instruments for 22 years in San Diego and treated thousands of incurable patients and eliminated their diseases when orthodox medical treatments failed to help against all diseases.

R. T. Haimer, M.D., treated patients with the Rife Ray Tube Frequency Instruments and had outstanding successes against tuberculosis, cancer, chronic colitis and other diseases until he was forced to give up by A.M.A. pressure.

Arthur I. Kendall, Professor of Bacteriology of Northwestern University Medical School and E. C. Rosenow, M.D., of Mayo Clinic worked with Rife and wrote about the results against cancer and other diseases where they worked with Rife in the University, the Mayo Clinic and in the Scripps home clinic conducted by Milbank Johnson, M.D., and his Special Medical Research Committee of the University of Southern California which cured clinically 16 out of 16 hopeless cancer cases in 1934.

Charles F. Tully, D.D.S., used Rife's Ray Tube Frequency Instruments for eight years curing all types of infections and lupis vulgaris and cancer cases in San Diego.

A.M.A. pressure has been responsible for the denial of free

enterprise and the right to market Frequency Instruments while framing and entrapping doctors who use this energy with the help of stooges hired by the American Cancer Society using undercover techniques and unconstitutional Food and Drug laws. Radiation and drugs and surgery have sealed the fate of countless numbers of patients who are denied other safe forms of therapy which have been demonstrated to be 100% effective against diseases, and other disorders of the human body, animals, and plants.

The Rife Ray Tube Frequency Instruments, although reviewed only briefly herein, are considered to provide electro-magnetic and cosmic energy and some magnetic energy but do not employ the true reversible magnetic polarity desired from electromagnets and do not induce direct electrocuting frequencies direct to the body such as the Frequency Instruments developed by John F. Crane in which some 100 instruments were built for testing and experimental use that attained outstanding results against virus, bacteria and worm diseases and in aiding body metabolism as well. This form of electromagnetic energy was also suppressed by the A.M.A. and refused to be allowed on the public market.

BACKGROUND RESEARCH ON MAGNETOTHERAPY

Note: The author wishes to gratefully acknowledge information from Alternating Magnetic Therapy by Thomas Colson of the Electronic Medical Foundation, 1200 Hyde Street San Francisco and "Magnetic Treatments" published by Northern Book House, Box 1000, Gravenhurst, Ontario, Canada.

Blood is a good conductor of electric current as well as nervous tissue and connections. It is well established that when any conductor

lism and the function of the endocrine glands, changes to more normal functions.

The profound effect which magnetism has on water was first noted in reducing boiler scale and similar deposits which were easily removed and later has been applied to diseases of the kidney, bladder, etc. A catheter may be used to inject magnetic water or the patient may simply drink magnet-treated water, tea, coffee, soups, etc., instead of the ordinary water which breaks up kidney stones that pass in the urine and prevents further stone formation.

There is magnetism in the field around the north and south poles and the polarity is measured as negative and positive and also reversible. There is magnetic field intensity, magnetic flux density, magnetic moments of force of the potential energy level. In magnetizing water first determine salt content in mg./liter of 400 or 800 gauss magnets of the permanent type. The water is passed through the poles of the gap and 1/10th second is enough.

Patients are first treated with 1/5th of their total daily water intake with magnet treated water which is slowly increased to no more than 70 per cent of their total water consumption.

Alternating magnetic energy has been denounced as having no effect on the devitalization of pathogenic organisms. The microscopic tests with such organisms reveal that no effect is noticeable in their devitalization and none is anticipated. Magnetic energy is intended for the repair of cell and tissue damage, supporting and aiding the lymphatic system, and changing and

correcting polarity conditions.

Thomas Colson of the Electronic Medical Foundation wrote that all living cells are made up of two colloidal solutions, the cytoplasm and the nucleus, separated by a semi-permeable membrane. The cytoplasm is alkaline in its electrical charge. The nucleus is comparatively acid in its reaction and positive in its electrical charge.

Hugo Fricke (J.Gen.Physiol., 1924,vi,741,746) has shown that the ions and electrons present in the cell are indicated as accumulations of electron charges. Certain parts of the cell are positive and other parts are always negative.

Mathews (Physiological Chemistry N.Y.1920) says these electron charges are produced in the cell by oxidation and accumulate on the opposite sides of the lipoidal dividing membrane of the cell much the same as a charge is held on an electronic condenser.

Crile (A Bipolar Theory of Living Tissue, N.Y.,1926) states that oxidation and the consequent acidity are primary parts of the most fundamental processes of the cell. He then concludes that the primary function of the cell is to make electrical energy by oxidation-reduction (ionization procedures) processes much the same as is done with acids and bases of the man-made battery.

Each living cell requires a certain hydrogen ion concentration for its normal activity and even a slight change in this pH concentration fundamentally alters the cell. When the change in oxidation goes beyond the normal limits, the cell is injured.

In infections where there is

excessive oxidation, there is an excessive electrical charge built up in the cells. This is manifested in a too-high positive potential on the nuclear side and to too-high negative potential on the cytoplasmic side of the lipoid membrane for the cells. The charge of the potential energy level is above normal for the cell. This state presents a condition resembling a permanent bar type magnet. These abnormal charges in the cells often interfere with the repair work of reducing an inflammation. Changing magnetic fields reduce the abnormal potential energy levels in the cells to hasten recovery.

Thus, changing magnetic fields can reduce quickly the high electrical cell charges to alleviate pain, swelling, and other discomforts in cuts, bruises, and injuries. Professor Muttowski of the University of Detroit wrote how he used electromagnets to treat mutilated flatworms and described how the lost body parts regrew more rapidly than the untreated "controls".

Changing Magnetic Fields is accomplished three ways: (1) By the application of positive polarity; (2) By the application of negative polarity; and (3) by DeGaussing or demagnetizing.

One case where much pain was suffered each morning and during the day resulted from a metal plate inside the body which was acquiring magnetic charges while the owner played an organ at times during the day. The solenoids being operated often were causing magnetic fields to charge the metal. Demagnetizing

stopped the pain and elimination of the beautiful organ stopped the source of the magnetizing field. Why suffer?

Great help has been reported from the treatment of nervous spasms which seem to be caused by negative polarity charges over-riding the normal nerve system controls. Application of positive polarity neutralized the pain and spasms in a few days and immediate relief from the spasms was reported. Other similar cases have been known to require six months of hospital care before recovery with traction and bed rest.

Several terrible toothache pains have been eliminated by the application of positive polarity from electro-magnetic fields in the area of 2,000 gauss units each pulling 2.2 amperes and being conservatively applied in an 18-inch radius from a small magnetometer reading. In all cases automatic intermittent pulsations were used in the approximate rate of 3 seconds "ON" and 2 seconds "OFF" which takes advantage of exercising the lymphatic system thoroughly that is a constant source of trouble due to its stagnation dormant tendencies without normal stimulations. The time of application of the electro-magnetic energy applied ranged from 5 minutes to 10 minutes (one time only).

BIOCOSMIC ENERGY FROM PYRAMIDS AND ELECTRO-MAGNETISM

A new device designed and built by John F. Crane has revealed exciting new applications of magnetic and cosmic energy which are concentrated in stainless steel pyramids lined with specular aluminum for the purpose of retarding old age. It has been

revealed by other researchers such as Dr. G. Patrick Flanagan that body cells have been preserved for thousands of years in pyramids that were not activated by "Electron Therapy" devices and with the application of Crane - Electron Therapy devices inside the metal pyramid envelope - some outstanding results are believed to be one of our new heritages.

The pyramid built by Crane in four sizes for the first experimental work is planned to be tested on the growing of sprouts and the preservation of food and other tests. With the ability to retard old age, it is believed that all of the other diseases will succumb in the normal course of the application of such bio-cosmic energy for the sole purpose of retarding old age with the combination of drinking 50"50 parts of wheat grass juice and carrot juice followed by the use of Dr. Ann Wigmore's seed and fresh nutrient recipes for a healthy life and a target life span of 500 to 1,000 years.

FREQUENCY INSTRUMENT FOR MAGNETOTHERAPY

A new device designed and built by John F. Crane has been created to utilize the effects of magnetic energy in the human body and to reverse the polarity as desired. This instrument consists of a DC power supply feeding eight electromagnets each having the capacity to induce 2000 gauss in an 18-inch diameter area. Two thousand gauss diminishes rapidly in any field.

The right side of the human body is said to have a positive polarity while the left side is said to have a negative polarity. Cancer tumors are negative and

can be treated with reverse polarity as well as by cleaning up the human body nutritionally. The treatment to be demonstrated against cancer will comprise of the use of three forms of energy from the Electron Therapy side including 1) electromagnetic; electrocosmic, 2) direct electromagnetic, and 3) electromagnetotherapy. Each form of energy is believed to have a definite aid and support of life functions in the human body and is considered essential to effect a recovery.

Metal in the body can be removed by using negative polarity or shoved in farther with positive polarity. The treatment of the body should progress from the feet on up to the head in stages so that the magnetic sensors can be aligned properly. The time period of application of energy is projected to be from 5 to 30 minutes. Since the energy is not continuous but is automatically intermittent using cycles of 3 seconds ON and 2 seconds OFF the human body is aided by magnetoconstriction which can pull or push fluids and organisms through the lymphatic system as an aid to human body elimination and in the balancing of normal magnetic body functions.

The electron spin of the molecules in this hemisphere is said to be clockwise while in the southern hemisphere it is said to be counter-clockwise. Many doctors use wobble-sticks or pendulum devices suspended from a chain to indicate whether the polarity is clockwise (positive) or counter-clockwise (negative) in the body or in materials. A sick person is said to be in the state of negative polarity which can be reversed with magnetic fields applied with polarity in the direction opposite to the disease or trouble encountered. Correcting and balancing the life processes in the human body by safe

As a means for relieving suffering and disease, polarity therapy offers great new hope. Polarity forces balance and aid the five senses and all life functions. Polarity therapy can be readily measured in the body with sensitive magnetometer--and with pendulums and other extremely sensitive meters. The room should be free from stray magnetic fields.

The body being equally divided into negative and positive polarity leads to deficiencies of this energy from shocks, blows, accidents and various concentrations that can be normally corrected by the application of the polarizers that provide generous amounts of negative and positive polarity as required, desired and needed. Polarity is taken from magnetic polarizers which result from the spinning of electrons within the atoms of the material. After being charged, electrons spin around their axis as well as the atoms of the material - the atom's own proton nucleus at the center of the atom. Most materials have an equal number of electrons spinning in opposite directions, and so tend to cancel each other's effect. When more electrons are spinning in one direction than in the opposite direction, the material is magnetized and polarized into two poles: one being positive while the other is negative. Polarity can be determined by a sensitive microvoltmeter. The positive pole will give a reading while the negative pole will not in regard to current flow, in the case of electron flow from impulses. To check polarity from an unknown polarizer, the south portion of the compass needle is attracted to the positive pole. Each pole seeks the opposite polarity since unlike charges attract and like charges repel.

The application of positive polarity to the right side of the human body and negative polarity to the left side of the body may be extremely beneficial to health by the induction of the normally needed polarity forces to overcome opposite polarity forces which cause trouble owing to shocks, blows, accidents and other concentrations of polarity not normally associated with desired inherent polarity. Such polarity forces in the polarization of harmful micro-organisms can cause them to be sterilized as when they are changed to all positive or all negative, Rife discovered that they will not reproduce. Such applications of concentrated polarity units which may cause the non-reproduction of pathogenic virus and other micro-organisms is viewed as a major breakthrough to health.

The application of polarity energy has also been demonstrated to greatly increase strength from 4 to 10 times and to aid in sleep and other normal body functions. It improves food and drink by use of positive polarity and with the awareness that food, grown or raised in or on the soil has only negative polarity because the soil is grounded and totally negative as well as the water coming from it.

Positive polarity in this hemisphere is known as electrons, the majority of which spin in a clockwise direction that is natural and normal. The taste and sweetness of food and drink has been greatly improved by changing the polarity from negative to positive by means of polarizers in two to three minutes which is kept polarized in the refrigerator for 48 hours normally. It is interesting to note that Russia uses polarized water, (in hospitals...) soups, tea, coffee, and foods. This may be used for recovery processes in the body or in preventative care wherein it is considered invaluable for the young and old alike to have and use. Laying on of the hands has had similar inducement but at vastly smaller energy levels which border on - it may help or it may not help. Energy levels are vital and without adequate concentration of energy, results may not occur.

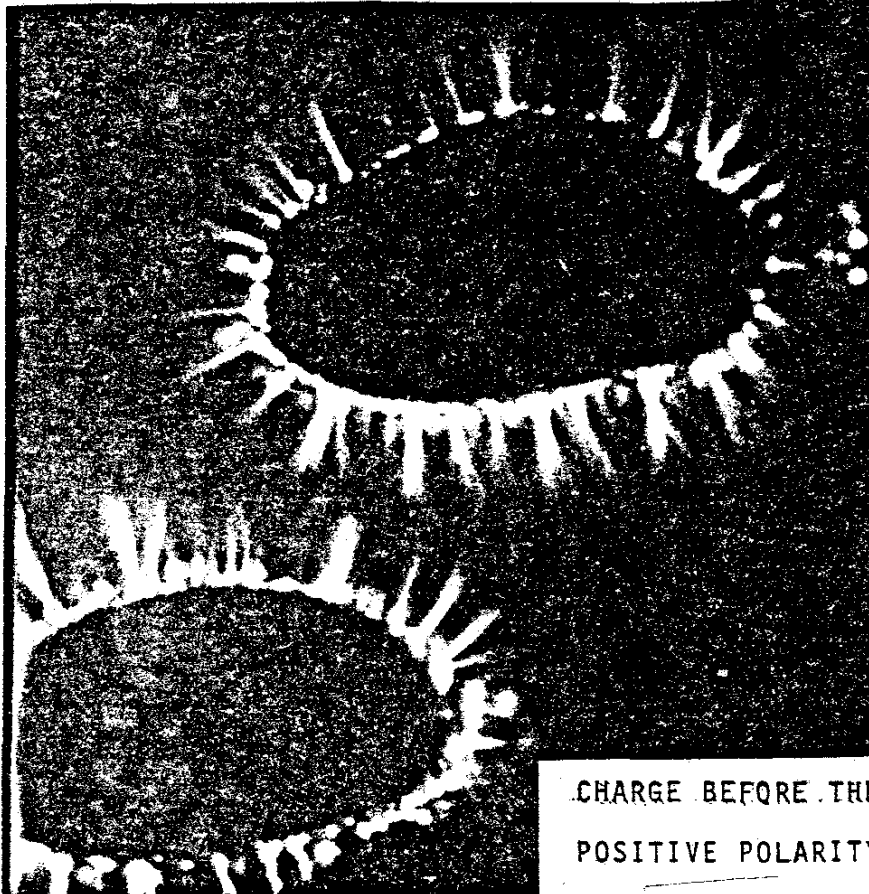
The proposed research will demonstrate that electron therapy puts strength back into the body that restores the body's ability to heal itself and recover from accidents, surgery, radiation, major killing and chronic crippling and paralyzing diseases. These troubles are believed to include every disease and trouble known to man and even those that are not yet known as no cell escapes the reach of polarity, whether by changes of the cell substances into their constituent ions by ionization so that oxidation and reduction processes can begin again to start the flow of electrons to the nervous system; no cell escapes the reach of positive electrons flowing into every cell of the body from electromagnetic audio frequencies of a potential energy level that is lethal to microorganisms but harmless to human cells; no cell escapes the reach of sympathetic harmonic vibrations from transmitted audio frequencies that devitalize viruses and reactivate the cellular functions so that potential energy levels may be revitalized back into the body wherein negative polarity from food and drink has taken its toll along with the other drug poisons, to which the body has been dosed and drugged.

Polarity in nerve cells is involved with the flow of impulses which are activated by resonant frequencies caused by response from heat, from pressure, from electric shocks, from foreign radiation applied near or on the nerve cells. Polarity is a condition of have a positive pole and a negative pole commonly known as North and South Poles and in static electricity known as a condition of polarized electrons that are not in motion. The magnetic polarizers induce a force of polarity into adjacent objects that overpower the existing polarity and it assumes the concentrated polarity charges instantly. The polarizers mentioned herein are not associated with an appliance for polarizing light. Polarity is also stated to be the exhibition of opposite effects at the two extremities. Polarity is also a presence of an axial gradient and exhibition of both anelectrotonus and catelectrotonus. Ene is a suffix used in chemistry to indicate an unsaturated hydrocarbon while tonus is a slight continuous contraction of muscle, which in skeletal muscle aids in the return of blood to the heart and helps to maintain posture. Such muscles are stimulated through and by the nervous system. Anelectrotonus is said to be an increase of the potential energy level of a nerve in the anode or positive polarity area while catelectrotonus is an increase in the negative polarity or an increase of irritability of a nerve or muscle when near the cathode; or negative pole.

The passing of one electron to another is called charge transfer. This was discovered by J. Weiss in 1942. This was a great discovery of biological importance. It means that molecules or atoms are not as closed and isolated structures as presumed, that electron clouds of two molecules can fuse, an electron of the one using the orbital of another which was explained by Robert A. Milliken. Weiss, working with complexes of aromatic hydrocarbons and quinones or nitrophenols, noticed that these had a strong dipole moment and that what happened was that an electron passed from the donor to the acceptor molecule in the chemical changes. He used strong donors and strong acceptors in which whole electrons were transferred spontaneously. Later, when interest centered around weaker donors, or acceptors, in which light energy was needed to complete the transfer, it was connected with the absorption of a photon and, thus the development of color to aid cell functions. Energy bands and charge transfer in electronics is readily applied to charge up as well as to discharge potential energy levels in the human body as well. Electron transfer takes place not only between different molecules but also between the different parts of the same molecule.



POSITIVE POLARITY CHARGE AFTER FIVE
MINUTE POLARIZER APPLICATION ON
HUMAN FINGERS [Kirlean Photography]



CHARGE BEFORE THE APPLICATION OF
POSITIVE POLARITY-2 FINGERS SHOWN

SCIENTIFIC BREAKTHROUGH FOUND IN TREATMENT WITH POLARITY POLARIZERS

The discovery that has been observed in answers to riddles of sickness points up a bright future in a scientific revolution in the elimination of radioactivity, x-rays and drugs which have proven harmful and have caused needless suffering and despair.

Of major interest is heart disease and heart attacks which can be readily eliminated with polarizers. Researchers are beginning to find out and understand that atherosclerosis, the first step toward a heart attack, stroke or coronary disease can be controlled. The trouble focuses on a group of cells that form the endothelium, the thin lining of the inner walls of blood vessels as the site where high blood pressure, smoking effects, undigested foods, and stress from nervous tensions, begin to work their insidious effect in the body that causes a dangerous build up of the dirt and debris in the blood from the lymphatic system called plaque inside the blood vessels. This plaque (circular or oval disks of 2 to 3 microns in size), when associated with the wrong reaction caused by an electrostatic negative or positive force in a blood vessel, can become attracted to the site thereby causing a restriction in the flow of blood resulting in clotting, heart trouble, diabetes and other ailments from the sealing off of the area functions, from the restriction of the blood flow, from the end result of the wrong polarity, and from a resulting increase in blood pressure.

This new concern has been voiced by Dr. Eric A. Jaffe, Assistant Professor of Medicine at the New York Hospital and Dr. Harvey Wolinsky, Assistant Professor of Medicine at Albert Einstein School of Medicine in New York City. They have studied this media in great detail finding a variety of substances leading to blood clotting, diabetes, and atherosclerosis. Polarizers have been used to reduce high blood pressure and to bring it back to normal and to induce strength and vitality back into a sick and weakened body so that such conditions can be on the road to recovery.

A recent study of polarity has been disclosed in photographs with Kirlian photography wherein a finger of a human was placed over the plates and negatives were exposed. The potential energy level of the person was recorded. He was next subjected to the forces of polarity that were applied to his hands and fingers from a 1/2 X 3 X 6 inch long polarizer which can produce 20,000 gauss at 5 inches distance. His fingers were again exposed and the potential energy level was recorded on film and showed a great increase in radiation and energy. Next the person was rested for thirty minutes without further contact with the polarizer. Then his fingers were exposed again and his potential energy level was captured on film. An to our amazement, his energy level had advanced to about 100 times of the original potential energy level of his body. His face flushed and turned pink and healthful wherein it was pale and white before the polarizer was applied and he seemed to be in more healthful spirits. By this method the intensity of polarity in the body can be readily measured and recorded.

The relationship to internal body strength greatly increased by the application of polarizers to the body using positive "South Pole" magnetic polarizers on the right side of the body and over the heart and negative "North Pole" (South seeking) magnetic polarizers on the left side of the body creates polarity forces which overcome disease by the change in polarity results that provide body and cell strength that can cope with and overcome the body deficiencies and diseases encountered in plants, in animals and in man.

THE POLARITY IS NEGATIVE WHEN THE BODY IS NOT WELL

In the northern hemisphere polarity is normally positive. A negative polarity means that the energy level is so low that the positive side of the frequency of the electrons has been virtually "chopped" off and is non-existent. It means that the response to normal stimuli is also non-existent. A person may be virtually without feeling where the cells of the body no longer function.

Longer response time periods to stimuli of voltage in the 5 volt range will be shortened with prolonged periods of application at lowered more comfortable voltages from 3 to 4 volts AC. (AC meaning alternating current at audio hertz). Longer period readouts of the changes in bioelectronic charges may be conducted by measuring slight contractions or expansions of the galvanic involuntary nerve responses, responses that show changes when positive or negative polarity energy is applied to a trouble part of the body.

The resistance in ohms and the electronic conductivity level of the blood, the organs, the glands, and other body parts differ from person to person and from part to part and the information gained from such measurements can provide an indication of polarity, conductivity rates, and the degree of operational efficiency which may be extremely important just as blood pressure and pulse is important.

The changes in potential energy levels of the bioelectronic readings are vital to check the organs, glands and bones and blood. The resistance of the blood determines the salt content in the blood and its measure of electrolyte in which the ions are electronically conducting. In the case of a bone fracture, an increase is noted in negative bioelectronic energy levels, and as healing takes place, the negative potential energy level slowly returns to neutral or normal microvoltages being observed. From this reaction other body parts, reflect similar distortions which can be readily measured when an abnormal condition exists. An extremely sensitive magnetometer can readily measure the increased or lowered polarity in the body which has a reading of plus or minus 0.2 gauss on the full scale of the meter.

The application of positive polarity to an infected broken bone, to a diseased or inoperative organ, to a gland area or to a cancer or benign tumor which is normally negative, there is an immediate change in the polarity back to positive resulting in the dissolving of the tumors, in the sterilization of the infections by locking up divisions of multiplying viruses and bacteria and eggs that may come from microworms in the blood. There is also a reaction effect to this inverse overpowering polarity in a 24 hour or 36 hour application that is most beneficial. This causes inverse microvoltage to flow in higher potential energy levels thereby increasing the strength in the body and enabling the body to cope with its trouble and "cast it out". Applications of higher voltages have been applied to soil in which the worms "come out at once". A similar reaction occurs in the body in which healing starts, microorganisms expire and leave, allowing the dormant cells to reactivate and start their flow of electrons again toward the central nervous system, thereby increasing the potential energy level upon which the body can sustain itself.

From the application of energy there is a reaction effect from the troubled part of the body which can be measured with a microvoltmeter. This then becomes a part of the indication of what is abnormal and what is normal by measuring vital parts with resistance, microvolts and micro-ohms. Knowing applied microvolts and body resistance, we can readily calculate microohms to determine current conductivity in the body. This is accomplished with Ohm's laws.

APPLICATION OF POSITIVE POLARITY TO FOOD AND DRINK

Food is supposed to give us energy. Illness is caused by loss of energy and by excessive negative polarity. The food we eat comes from the soil. The soil is negative. Thus our food is negative from the soil. Our food is further changed from negative to deeper negative by being stirred in blenders that rotate counter-clockwise. If your blender rotates clockwise, you are in luck.

Each cell in your body is continually going through oxidation and reduction accompanied by the "giving off" of electrons. From electrostatic charges on these electrons, it can be readily determined whether these electrons are spinning in a positive polarity (clockwise) or in a negative polarity (counter-clockwise). Thus we have two poles of polarity which are positive (clockwise electron spins and north seeking) or negative (counter-clockwise spins and south seeking). And from the basic rules: like charges repel and unlike charges attract.

By use of sensitive magnetometers the polarity of the body is readily measured in that the right side is positive and normally so and the left side is negative and normally so with the polarity being divided down the centerline of the body and neutral at the center.

When a person becomes too negative, the body's potential energy level is lower which results in a lowered body resistance to disease and body cells cease to function in their oxidation and reduction forces which do not give off the necessary electrons to sustain normal life support functions. A person starts on the road to illness when his cells fail to perform, and when too negative, the bacteria and other micro-organisms release their virus which, in turn, starts to divide and multiply thereby causing fever and disease in the media upon which it grows, and the disease is determined by the media upon which it grows. The media can turn the disease into a wildfire of epidemic proportions from the common E. Coli which are plentiful within. Fortunately, we have the electronic methods perfected that can destroy new germ creations that could destroy us without our new magnetic, electromagnetic and cosmic energy aids.

A person starts on the road to illness by eating more food than the body can digest or assimilate. This causes food poisoning, undigested food to be unfit to be absorbed or assimilated by the body which passes on down causing constipation, hypertension, high blood pressure, nervousness, loss of energy, nervous disorders, blood disorders and other troubles. Food poisoning may also be started by eating excessive amounts of negative polarity foods which weaken the body resistance to stay well and thus, by increasing the negative potential energy level, sets up further discomfort and trouble.

Natural causes of trouble stem from foods like fruit and vegetables eaten at the same meal which later ferment in the bowels into alcohol which destroys the kidneys and liver as persons become food alcoholics. Gas is a major cause of trouble caused by foods that when improperly mixed form elastic aeriform fluids in which the molecules are separated from each other and so have free paths. Gas may also be caused by foods that are not chewed properly. Such foods may combine to mix with the previous meal of food and drink that can ferment additional displeasure. Eating low stress foods and using the mono diet can help to correct the trouble, however, the major breakthrough is seen as in polarizing your food positive. The potential energy level of positive polarity induced into foods can greatly benefit your health through a two or more minute application of positive polarity applied to the food or drink just before it is eaten. This also causes changes for better taste and quality.

THE EFFECT OF POLARITY ON HEART ATTACKS, BLOOD CLOTS AND DISEASES

To a sick person, the administration of internal strength and especially to a weak person, the application of positive polarity to a negative polarity in the body to change the polarity from negative to positive is a boon to health.

Polarization is accomplished by using a strong magnetic field, a strong electromagnetic field, and a strong sympathetic vibratory audio frequency of the proper positive polarity that is applied to food, drink and the body for a period of 2 to 5 minutes. And particularly in the area that is afflicted.

The quality of the food and drink is greatly improved as both are totally negative coming from the negative soil wherein they gain their charge of negative polarity. Food and drink, polarized positive, taste much better and the poison in them becomes neutralized and harmless.

Weak polarizing fields do not polarize the body or the food and drink sufficiently to accomplish the necessary transformation from negative to positive. In the area of magnetic polarizers, ceramic magnets retain their strength for a lifetime with careful use and thus may prove superior to other conventional metal magnets that lose their strength after several years.

A simple test can be made with magnetic polarizers: (1) place a positive (North Seeking) polarizer on the left side of the body in the area of the kidney (2) hold for 2 minutes (3) move the right arm to the outstretched position at right angles to the body (4) tell person to resist a downward motion of the arm and apply pressure from another person's hands to force the arm downward. There is very little resistance. Next (1) place the opposite side of the polarizer magnetic in the same left side of the body over the kidney area (2) hold for 2 minutes (3) move the right arm to the outstretched position at right angles to the body (4) tell the person to resist a downward motion of the arm and apply pressure from another person's hands to force the arm downward. There is 4 to 10 times the resistance which is great and sometimes impossible to move the arm downward. This simple test proves that the life support systems in the body need positive magnetizing or positive polarity energy for strength and vitality for normal mental and physical health functions. Positive polarity energy applications to food, drinks and the body have demonstrated in thousands of tests annually since 1920 that diseases can be readily controlled with polarity and without the necessity of death-dealing shots which are all potential sources of infection; with pills that cause side effects which polarity is free of and radioactivity in the form of nuclear radiation, x-rays and microwaves such as radar that have caused cancer and other diseases for decades and have failed to aid or control the diseases being treated in errors.

The answer to sick riddles with polarity reflects a scientific gain and revolution in the treatment of disease that is far superior to medicine consisting of poisons to the body, x-rays and radioactive nuclear energy which burns the body externally and internally into massive scar tissue and lifelong growths and side effects. These methods should be replaced immediately with cosmic energy, polarizing energy, electromagnetic energy and electrostatic energy that help revitalize the body cells in addition to revitalizing the food to the correct polarity for the recovery of the body (and the food and drink) which, when combined with food grown on proper soils, (and proper chemically balanced soils, which for the most part has been ignored owing to economic misfortune) is the answer.

HEART ATTACKS

Of major interest is heart attack and heart disease and the path to such a disaster. Researchers are finally beginning to understand how the process of atherosclerosis - the first step toward a heart attack, toward a stroke or toward a coronary disease may be initiated; and may be eliminated by polarity applied to the heart and clot areas.

The trouble focuses on a group of cells that form the endothelium, the thin lining of the inner walls of blood vessels as the site which charged up with negative polarity can attract positive plaque. These restrictions at various parts in the body combine to increase blood pressure until it becomes high and pulse murmurs start and pulse rate declines; combine from smoking, from diets, from poisons in the blood caused by drugs, and from stresses and harmful radiations from x-rays, radar waves, radioactive emanations from treatments which cause the cells to decay, so that their functions are destroyed. These negative forces begin to work their evil and insidious effect on the body that is the cause of the dangerous build-up of material called plaque inside the blood vessels and in the blood and which "dirt" and debris is constantly being injected into the blood stream from the lymphatic systems. These negative forces cause an electrostatic force buildup that creates a reaction of the wrong negative polarity to attract the positive plaque and debris thereby restricting and in some cases cutting off the flow of blood thereby setting the stage for the stroke or heart attack from the resulting increase in blood pressure and decrease in pulse rate.

This new concern has been voiced by Dr. Eric A. Jaffe, Assistant Professor of Medicine at the New York Hospital and Dr. Harvey Wolinski, Assistant Professor of Medicine at the Albert Einstein School of Medicine in New York City. They have studied this media in great detail finding a variety of substances leading to blood clotting, diabetes, and atherosclerosis. Polarizing polarity of the North seeking force of the proper magnetude have demonstrated in many cases that blood pressure can be quickly returned to normal pressure, that heart murmurs can be stopped and returned to normal and that low pulse rates can be quickly returned to normal even in elderly persons. The induction of the proper positive polarity into the body can definitely eliminate heart trouble by releasing the "negative polarity" blocking blood passage, can release the causes of wrong polarity foods, drinks, and drugs that have made the body ill.

Relief from pain is another great boon of the polarity applications that provide energy in the body so that it may heal itself. Continual application for days may be required to secure the return of lost feeling that has made the cells of the body dormant. Prost-ate trouble seems to go away after a 24 hour treatment with positive polarity which has been a most painful condition to many senior citizens.

Diabetes is another infirmity that causes mental illness, failing health and a deficiency condition marked by habitual discharge of an excessive quantity of urine and the defective metabolism of carbohydrates of food, insufficiency of insulin secretion and liver trouble. This disease has recently been associated with virus and "blackouts" that show the body sugar level to require sugar from natural sources. The cause of these malfunctions has also been attributed to plaque in the blood which covers up the areas of the blood passages that feed the body so that the necessary nutrients cannot pass to the body and the body becomes deficient in such nutrients. Polarity from polarizers relieves the condition and aids health for such desired relief.

THE POTENTIAL ENERGY LEVEL OF THE BODY DETERMINES POLARITY

The pH of the body is likened to acidity which is positive and alkalinity which is negative and beyond these concepts either may be polarized positive or negative by stronger polarity forces than the charge in the body or food normally contains.

A magnet which will deliver 20,000 gauss at five inches distance is considered to be sufficient in strength to polarize any food or body parts in two to three minutes time. Polarity may also be induced by electromagnetic radiation by applying the positive conductor to the right side of the body and the negative conductor to the left side of the body allowing the body to complete the circuit. Polarity may also be induced by applied transmitted electromagnetic energy in which the positive polarity in the antennae is directed toward the body and the negative is returned to ground of the circuit.

Food that is eaten and digested starts pH reactions instantly which induce electronic charges of polarity thereby creating sine wave micro currents upon which the body is operated and controlled from the nerve centers in the brain. The potential energy level of these foods ranges from violent, in the case of hot chili-peppers, to low stress in the case of low stress foods. Pepper, being indigestible, is another source of high stress, violent reaction chemicals that greatly increase the negative potential energy level in the body.

When the pH of an organ or the blood becomes unbalanced, by the use of such disturbing food and alcoholic and other "hot" burning drinks and from the nicotine poisoning which is in the bloodstream in 3 seconds after breathing air either from smoking or inhaling it in the room for hundreds of times, the autonomic nervous system carries impulses of the increasing or decreasing potential energy levels to the central nervous system for response purposes. This creates a microvoltage field which can be measured on a chart or on a microvoltmeter of the vacuum tube voltmeter type. Using acupuncture locations, voltage readings may be taken. Electrodes may also be applied to the lower extremities and by using high gain audio amplifiers, these bioelectronic charges can be readily observed to be variable. The changes in microvoltage depends upon whether or not the positive or negative polarity is increased or decreased and also depends upon whether the energy is sufficient in the polarizer being used that is applied to an organ whether affected or not; or whether it is applied to internal or external surface tissue.

The application of polarity energy, whether cosmic, magnetic, electromagnetic, or heat rays, can cause reactions which overload the lymphatic system and can cause distress if too much is accomplished in the initial application in the devitalization of bacteria, virus, worms, and other microorganisms. It is important to realize that an adverse reaction is not harmful but that the body is trying to overcome the destruction of large masses of such microorganisms for the purposes of getting well.

It is necessary to use a delay time readout instrumentation system to afford the extension of time which allows resonance to work its beneficial effects in the time base for polarization so that the results can be better evaluated. The initial application of potential energy levels to an inactive or dormant body may receive zero response and the person will state that nothing is felt, but, upon prolonged applications of energy, feelings begin to filter through and abrupt reactions may be observed and the potential energy level must be reduced for body comfort. Longer period readouts are necessary to record the response to reactions.

THE EFFECT OF RADIONICS ON POLARITY AND POLARIZATION CHARGES

Polarization is defined as the process of bringing about a partial separation of electrical charges of opposite sign in a body by the superimposition of an external polarizing field. In magnetic polarization such as we are concerned with herein, the degree of concentration of the positive or negative field applied determines the polarity of the induced field.

In radionics each individual organism or material radiates and absorbs polarity energy by means of its own wave field and polarity which exhibits certain shapes, forms, frequency oscillations and tiny radiation energy characteristics. This is an extended force field that has been observed in Kirlean photography and exists around all forms of animate or inanimate matter. The atom, around which electrons revolve, is a good example. The faster the electrons evolve and radiate, the more internal and external energy is activated and radiated. The polarity of electrons may be either negative or positive or predominantly either by polarization charges. Activity is increased by heat and retarded by cold, by frequency applied to the atoms which reaches its highest known energy from cosmic energy in the shortest waves and highest frequencies going back and forth so fast that a potential energy level for one cycle is virtually flat, or zero exhibiting neither positive nor negative polarity.

Electronically, the pathways of electron frequencies of a sine wave pattern in negative environments may be cancelled by application of the same frequency which is applied 180 degrees out of phase with the existing frequency.

Using transmitters, a carrier wave contains the audio frequencies within its envelope which must be "split off" by an antenna. The energy reaching glands, body systems, and organs, ripples and tends to demodulate the carrier waves in a resonant radiation and absorption of the energy patterns which, at times, may constitute a sympathetic series of vibrations that effect specific areas. Glands, organs or tumors may be scanned for points in resonance by association of heat or resonant energy peaks that may be displayed on oscilloscopes for visual observation. Thus abnormalities may be detected and outlined wherein they have reached a high degree of negative polarity. Energy frequencies, having the healthy and normal period of vibrations of the glands or other parts of the body, will drive the gland or other parts in a normal and healthy state. This can reactivate cells that are dormant, charge them up to peak operating levels again and regain health thereby. This produces realignment of the radionic cells, the bonds rejoin, and healing occurs. Continued treatments eventually heals the structure and holistic healing requires that harmony with the mind, with the spirit, and with the radionic entities combine to complete the healing task.

It has been clinically verified that alternating low frequency audio frequencies devitalize pathogenic bacteria, virus and worms and fungi. Magnetic polarizing magnets remove the ability for the virus cells to divide and thus their multiplication is eliminated which is considered a form of sterilization. Electromagnetic energy applied in the form of audio frequencies directly to the body has readily demonstrated its ability to devitalize pathogenic bacteria, virus, worms and fungi when used with a suitable electrolyte both internally and externally. The blood being about 5 percent salt is an excellent conductor and voltage may be measured on all parts of the body for electrocution and devitalization effects without harm to the human cells which stand the voltages of 2 to 5 volts while the microorganisms cannot tolerate it and disintegrate into oblivion.

THE INTENSITY OF POLARITY CAN INDICATE THE DEGREE OF BODY HEALTH

The intensity of polarity potentials, body resistances, body voltage conductivities, and body temperatures, can indicate the presence of a normal condition or an abnormal condition from the use of internal and external connections in the body. Such measurements can pinpoint the internal organ troubles, the autonomic functional disturbances, inflamed areas, fever areas, low conductivity, poisoned areas, negative polarity areas, low resistance areas and nervous disorders, and dislocations.

The large body organ (visceral somatic) reflexes (the sum total of any particular involuntary activity) can readily be measured at specific spinal centers or nerves through which the autonomic (self-controlling) connection relays its messages and polarity intensity. Increases in the potential energy level accounts for spinal spasms, pain normally caused by heat, pressure, or adverse polarity intensity of negative electrons. Correcting the polarity back to positive will relieve spinal spasms. Pain is also relieved in some cases with applications of polarity units, 800 hertz transducers and cosmic energy applicators. One case of pain was helped with a positive polarity unit on one side and a negative polarity unit applied to the other side of the limb in which both faced each other and provided a neutral zone in between the two polarity unit polarizers. Rarely is one side stimulated without the opposite side being activated to help balance the polarity condition.

There are other ways of observing microvoltage reflexes generated and induced by polarity polarizers and other forms of energy because they are not only local, but become a complete body distortion to the increased resistance against natural increased irritation from the same source that displaces the bioelectronic or polarity degree of potential energy level that exists.

Many doctors have discovered, in reaction effects, that involuntary reactions taking place in muscles of either leg and torso, are not physically noticeable unless both legs are lifted, while the person is lying flat on a table, then slowly lowering the legs back to the table without pulling either leg gently. The muscle tension can then be seen and measured by noticing the difference in the length of one leg compared to the other. Such differences in polarity intensity explain the need for the application of polarizing positive polarity on the right side of the body and polarizing negative polarity on the left side of the body which will bring the legs back to the same identical lengths when correctly balanced. A water bed has also been found to be helpful in observing the reflex action and reaction to stimuli.

Migraine headaches have been found to originate from specific organs having polarity potential energy levels that are incorrect and which can be readily corrected with the proper polarity re-established in the body.

In the field of Kirlian photography, a process that photographs an electrical discharge field surrounding plants, animals, and persons has demonstrated the incredible potential energy levels attributed to polarity that greatly increases the amount of radiation observed, and even after 1/2 hour the intensity was observed to increase from the body's own reaction of an increase of polarity and internal strength heretofore not thought possible. The great strength increase of muscular strength and color and tone could be a deciding factor for a persons survival, recovery, and well being. Healing has also been observed by use of transmitted audio frequencies, direct applied audio frequencies, cosmic and + polarity. Natural and pulsed positive polarity can induced tremendous healing powers on bones and other body parts and mental troubles caused by negative areas.

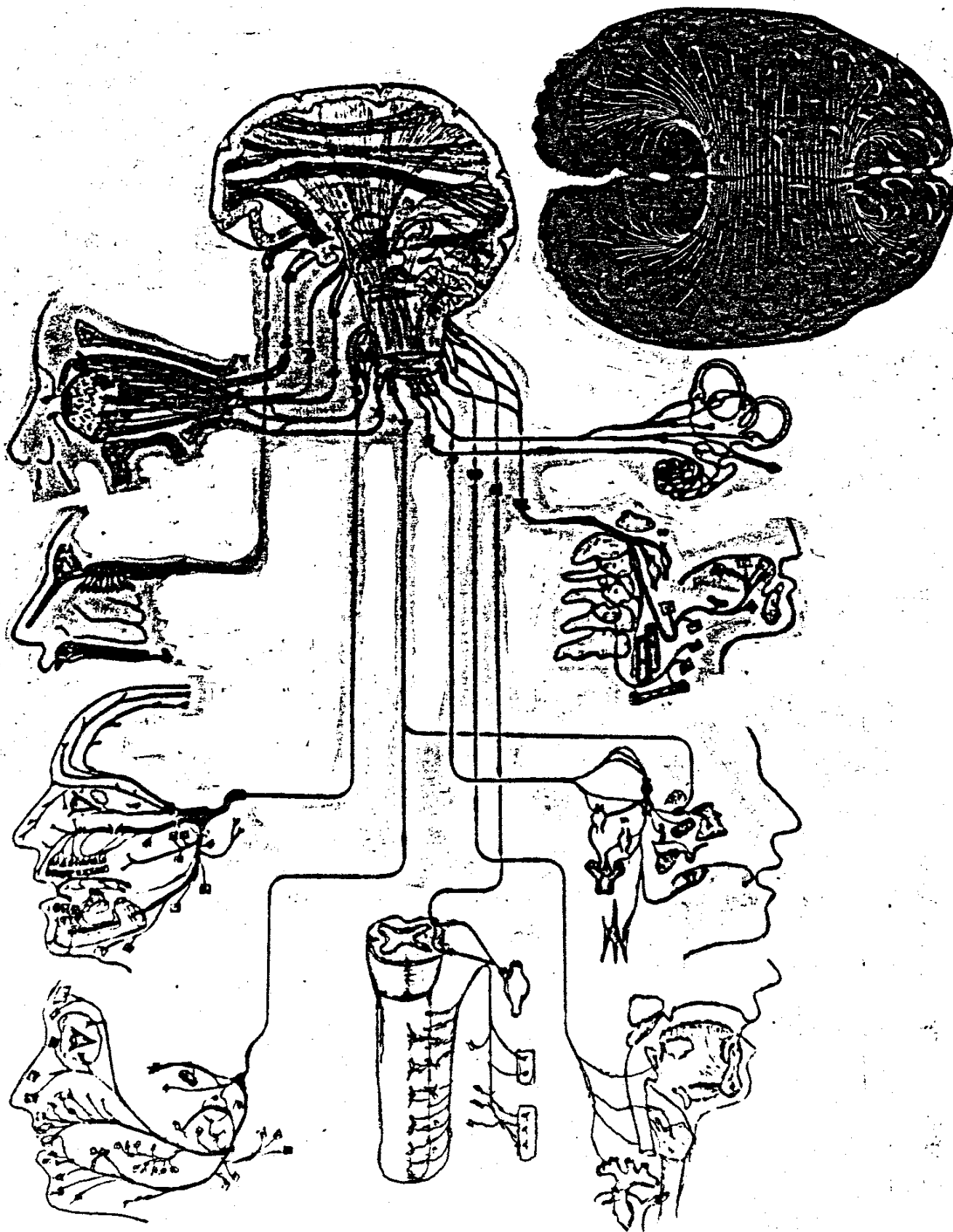
The radionic energy in the cells is attributed to biomagnetics or positive and negative polarity as well as electrostatic energy (both answering to the same polarity law in which like charges repel and unlike charges attract. Molecules of cells can be polarized to form liquid crystals. Once liquids become polarized, the molecules relate to radiations from the surrounding molecules.

Nature seeks a balance and polarity determines the positive or negative concentration of these energy forces. The all over-powering polarity comes from magnetic forces which dominate and polarize adjacent molecules into the desired polarity. This plus or minus condition is readily measured with magnetometers where the potential energy levels are sufficiently raised so that they may be read and observed.

When water is added to a substance and becomes a solvent carrier, it can cause a decay cycle by microorganism attack. The microorganisms in the water grow and rapidly multiply to the amount that the food in the water provides and they decay by expiring from polarization locking up their ability to divide, or from starvation in which their food supply has been exhausted. Decay is also associated with the cell processes of oxidation and reduction which are applied to the minerals and elements in the cells. Silica, a major element of the earth, decays rapidly owing to its dielectric or nonconducting quality wherein it accumulates static electricity in its molecules. Silica or quartz is said to be a good insulator. Silica can lose its ability to hold itself together when audio frequencies of electromagnetic energy are tuned to its resonant frequency such as has been observed with the disintegration of glass. Silica can also lose its ability to hold itself together by application of negative polarity from fallout radiation applied to water, for example in a dam, which can be disintegrated by decay radiation action of ~~ex~~cited solubility acceleration. Steel in combination with silica can also weaken and disintegrate by the same radiation infiltration to decay the bonds of the molecules thus destroying bridges and tall buildings, and so forth.

The elements of hydrogen and oxygen, in their liquid state can become "heavy" with polarity changes in their molecular composition; even air humidity causes the changes. You would have no pulse or heart beat if it were not for the oxidation and reduction processes going on continually in your body to create the giving off of electrons that are fed to the nervous conductors activating potential energy levels in the body that make the body function normally. The radionic effects from millions of cells in the blood, flow electrons together, that cause electrostatic and polarity forces to search out and reach for the opposite balancing potential energy levels as cells pass their electric charges to other cells which pulse the cells, make them movable from time to time in all directions and keep them alive electronically. When radiation, microwaves and radar, and other x-rays of a negative polarity break down their positive polarity and when the cells no longer perform their oxidation and reduction functions, the cells are said to be dormant, feeling ceases, and communication ceases into lifelessness. An electronic "null" or death occurs and anemia and loss of energy exists. To avoid this decay it is important to observe proper safeguards in contact with cancer causing and death dealing forces of microwaves, radiation, radar, x-rays and other harmful decaying radiations of negative polarity. Forms of radiation that are harmful and accumulative must be avoided at all times.

Polarizers stop decay, increase internal and cell body strength for fast body recovery from sickness when applied with proper energy levels.



PORTION OF WIRING DIAGRAM FOR ELECTRON THERAPY APPLICATIONS

POLARITY FUNCTION IN THE HUMAN ANATOMY

All matter and energies are made up of atoms which are composed of the center neutral part or neutrons, represented by symbol 0; the positive electrons +; and the negative electrons -. Polarity is said to be positive when more electrons are whirling in a clockwise direction than counterclockwise. Polarity is said to be negative when more electrons are whirling in a counterclockwise direction.

All cells are bipolar in their functions giving off electrons from the forces of oxidation and reduction. The accumulative amount of these electrons that are given off depend upon the nutrients returned to the cells by the blood. If the cells receive a massive negative polarity from the food eaten, then more negative electrons than positive are going to be received in the nervous system which unbalances the health functions and leads to poor health.

The centerline of the human body on a vertical plane is the neuter pole dividing the body sides with positive on the right and negative on the left with, of course, some changes in regard to sex and body make up as previously set forth. The side of the head has a polarity associated with the brain as being positive in front and negative in the back and looking from the left side the electromagnetic brain waves are said to be rotating around in the brain area in a circular motion from the top of the forehead to the rear of the top of the head and then on down and around continuously.

The right side of the body and the right side of the head is given as the positive pole that gives off positive energy currents and polarity while the left side is just the opposite.

An excess amount of positive current produces pain, swelling and tissue heat, and irritation in the organs and other body areas. Heat coagulates blood in protein. Due to an excessive amount of blood in the area, the opposite polarity pole is required to balance it back to normal. Painful swellings can be reduced in approx. 30 minutes.

The right hand conducts positive polarity while the left hand conducts negative polarity. The polarizers which have a positive pole and a negative pole can be employed to balance the body polarity by massive overconcentrations of polarity which benefits are received in seconds and minutes. Positive polarity can relieve negative spasms, tension, congestion and strains. Negative polarity should be located over the pain itself where the positive currents are in excess to release irritation, heat, swelling and to return the normal body strength back to its rightful position. The negative pole provides toning, soothing, cooling and cell refreshment.

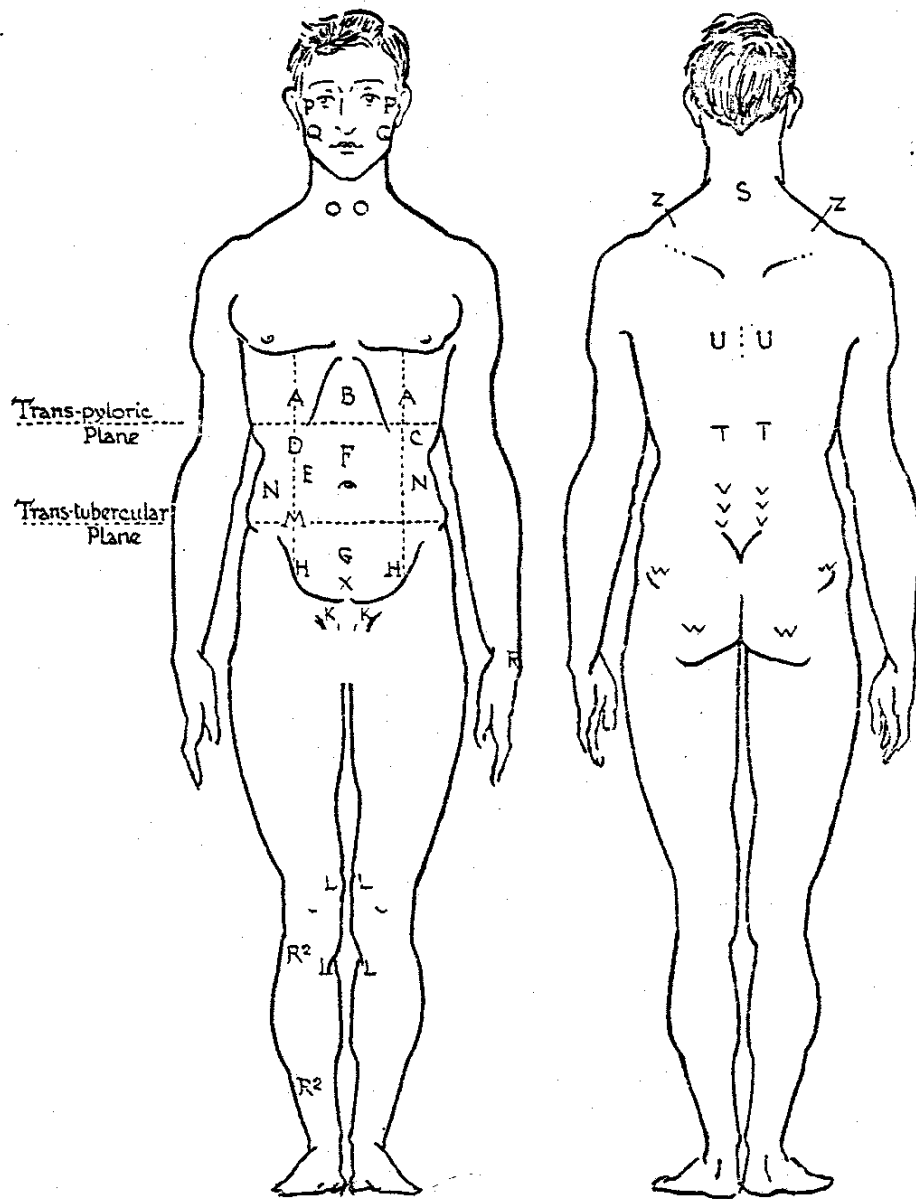
If the pain is in the front, place the negative pole over it, and the positive pole on the back opposite the pole on the front to get an electron therapy flow through the congested area and to relieve pain. With the polarizers, it may take up to 30 minutes to readjust. With the use of Frequency Instruments, observe the correct polarity as every cell in the body is treated simultaneously and the major intensity of the current will be applied over the painful area - front to back or top to bottom.

Downward stroking with the negative polarizer has a very soothing effect and with the positive pole - a very stimulating effect, wherein, the stroking is from the direction of the feet to the head. (just the opposite from downward).

Placing the polarizers on the feet while watching TV, positive up under the right foot and negative up under the left foot can energize the body meridians and cells.

By the author and B.W.Gonin

SELECTED POINTS FOR INJECTION
FOR APPROPRIATE TREATMENT CAN BEST
BE STUDIED BY THE FOLLOWING DIAGRAMS.



AN OUTLINE OF THE THEORY & PRACTICE
FOR POLARITY THERAPY IN HUMAN BODY

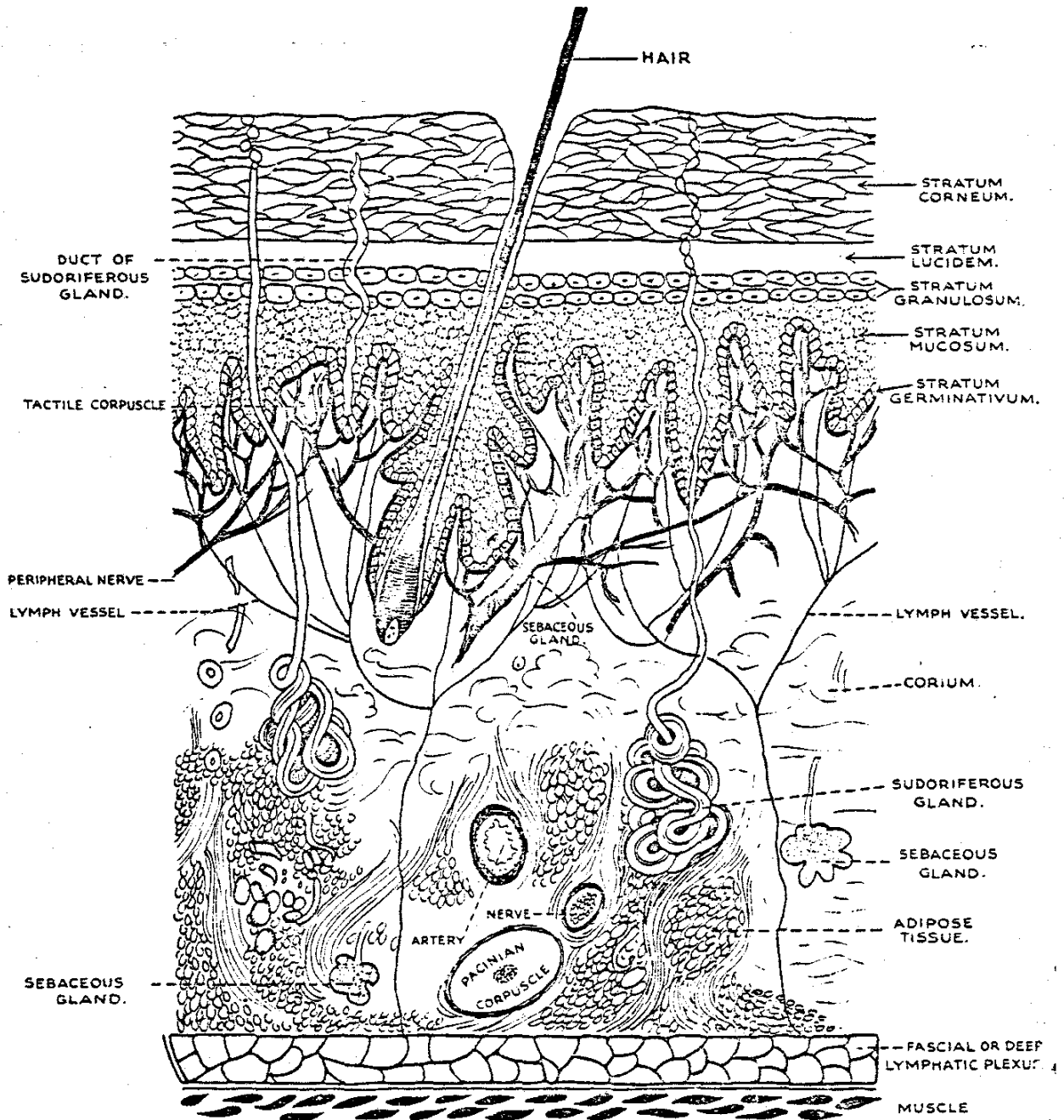
LOCATION FOR INJECTION OF POLARITY BY MEANS OF REFERENCE LETTERS

- A, right, corresponds to the right lobe of the liver, under which the ascending colon turns into the transverse colon.
- A, left, corresponds to the large curvature of the stomach.
- B, corresponds to the epigastrium. It comprises the left lobe of the liver, the stomach, the transverse colon, the duodenum and the pancreatic gland.
- C, D, E and F is the middle abdominal region about 3 cm. above the navel, and corresponds to a part of the transverse colon, but chiefly to the jejunum as well as parts of the ileum on the left side of the aorta abdominalis.
- G, the hypogastrium.
- M, the lower abdominal region.
- N, the right and left lumbar region.
- HH, the lower part of the inguinal region.
- X, the lower hypogastrium.
- KK, the os pubis region.
- I, the hips.
- L, the knee musculature, to be watched in cases of articular rheumatism and gout.
- O, corresponds to the thyroid gland.
- P, corresponds to the trigeminal nerve.
- Q, corresponds to the parotid gland.
- V, the os sacrum and the lumbar plexus. To be closely watched in sciatica.
- W, spinal infantile paralysis and lumbago.
- TT, corresponds to the kidneys.
- U, corresponds to the roots of the lungs.
- S, corresponds to the tumour growths in the nape of neck.

EXPLANATION OF SELECTION POINTS FOR INJECTION OF POSITIVE & NEGATIVE POLES USING POLARIZERS OR FREQUENCY DEVICES

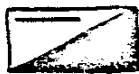
- A, in pleurisy; A, left, in cardiac neurosis. In hyperemia when the veins are visible.
- B, in asthma, epilepsy, gall stones and gastralgia.
- C, in cardiac neurosis and splenomegaly.
- D, in all liver and throat diseases.
- E, in rheumatism, gout and paralysis of the lower extremities.
- F, in diabetes.
- G, in disease of the duodenum.
- HH, in sciatica.
- KK, in diseases of the abdomen.
- L, in rheumatism.
- M, in diseases of the caecum.
- N, for the ovaries and appendix.
- X, for abdomen and bladder.
- Q, for the parotid gland.
- P, for the trigeminal nerve.
- O, for goitre and the thyroid gland.
- R, for rheumatism.
- S, for tumours, swellings of the neck and paralysis of the arm.
- U, in consumption and tuberculosis; also at B in tuberculosis of the lungs.
- TT, for the kidneys and spine tensors.
- V, in sciatica, infantile paralysis and lumbago.
- W, also in sciatica.
- Z, Supra-scapular, nerve in neuritis.

SECTION OF THE SKIN OF THE BODY -
THE INTEGUMENT



CONTROL OF EXPANSION OR CONTRACTION
OF BLOOD VESSELS - SKIN VASOMOTORS
[SECRETORY NERVES TO SWEAT GLANDS]

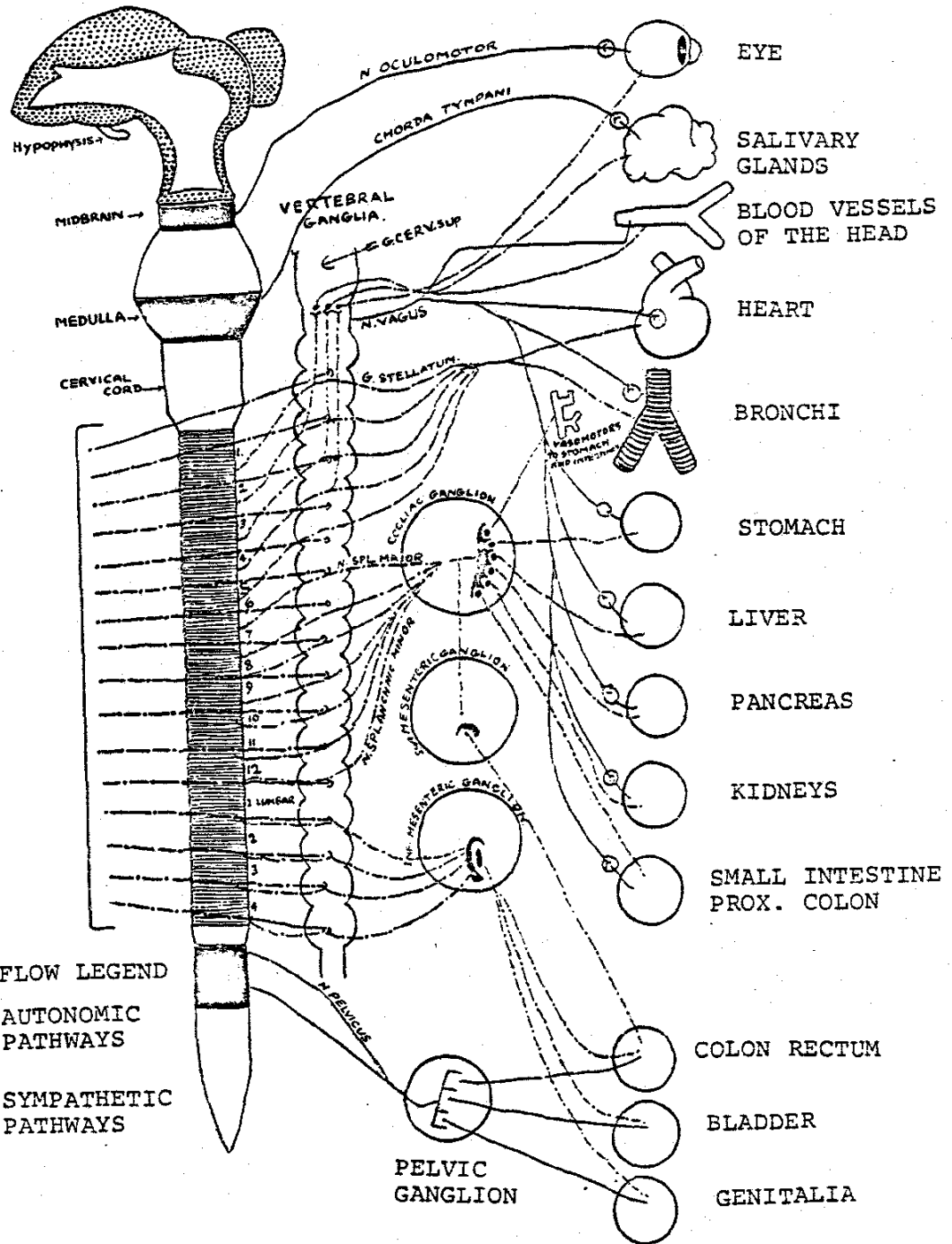
ELECTRON FLOW LEGEND



AUTONOMIC
PATHWAYS



SYMPATHETIC
PATHWAYS



EPISTEMOLOGY.

HEALTH AND ILL-HEALTH.

Health is a condition of soundness of the living organism. It is the maintenance of the approximate constancy of the internal environment and, so, requires constant regulation.

Deviation is disease.

Disease is a condition of structure which by mechanical or chemical means has been changed from its natural state.

Actually, disease is not an entity but the result of a series of experiences with an unfavourable environment, and constitutes the sum total of all the reactions of the body, physical and psychical, to adverse environment. It is an artifact to separate man from his environment and from the universe.

Actual symptoms of disease as observed by doctors may be largely due to the proliferative morbid processes of the various specific bacteria or viruses; these in turn only exist because of a favourable soil.

No hard and fast lines between the various types of disease exist.

There is a definite series of body changes with specific concomitants (micro-organisms) from the first alteration in the dynamic balance of the cell right up to the appearance of malignancy which is the summation of the body's reaction to all physical and psychical ills.

Any condition of disease results in some degree of energy imbalance and the most that any form of treatment can aspire to accomplish is to assist the subject, as a whole, to re-assert his inherent tendency towards normal balance.

In other words, the standard of natural or original immunity to disease must be restored and retained.

A plant or an animal insusceptible to attack by bacteria or virus is a plant or an animal completely immune to attack by invasion, infection or contagion.

That being so, is disease natural, or normal or necessary?

Is disease avoidable and, perhaps, inexcusable?

Is all disease due to one primal, fundamental cause?

Is disease of skin and bone and bowel due to one and the same primal cause? If so, this would enormously simplify matters.

The suggestion made here is that it is so due.

THE CAUSATION OF DISEASE.

IMPROPER CULTIVATION.

For 6,000 years or so, the soil has been scratched to a depth of only 6 or 8 inches, first of all by hand-labour, then by oxen, then by horses and finally by immense machines, e.g., gyro-tillers, weighing anything up to 16 tons.

The weight of the animals, and still more in the case of heavy machines, has compacted the sub-soil over the face of the whole world until a hard-pan of varying thickness has been created a few inches beneath the top-soil as hard as the surface of a macadamised road.

This hard-pan is impermeable to rain with the result that the water is led off its surface into ditches and streams, leading to inundations and floods (e.g. Mississippi Valley, Fen Country, etc.) and causing constant leaching out of mineral salts, such as Calcium, Potassium, Magnesium, etc. As a result of this impermeability the sub-soil lacks its norm of water and the water-level (and consequently Earth Rays) is interfered with: so much so, in fact, that capillary attraction is unable to function properly.

Through this lack of water in the sub-soil the top-soil becomes unduly dry and desiccated and in certain quarters, under the agency of heavy winds, it blows completely away (e.g. Western States of America.)

Elsewhere, in seasons of drought it will not support plant-life. The impermeability of this hard-pan to rain not only deprives the sub-soil of its norm of aqueous content, but also deprives it of its oxygen and interferes with the solubility and assimilability of all the earthy and mineral salts essential to plant growth.

Further, the impermeability of the hard-pan prevents the penetration of the sub-soil by the plant rootlets, and directly interferes with the growth and proliferation of the millions of micro-organisms upon whose well-being all growth depends.

With loss of the norm of water, oxygen and insolubility of mineral salts, these bacteria are unable to convert the inorganic salts into assimilable organic form and consequently protein formation suffers, both for plant fabric and plant food, together with faulty auxin and hormone formation.

As a consequence, toxic substances, such as tox-albumin, appear at the cost of amino-acids, vitaminisation suffers, the whole laboratory of the plant is upset and the health of the plant declines.

By this improper cultivation of the land and improper seeding the immunity of the plant suffers and it becomes readily attacked by bunt, rust, smut, by viruses and by fly, etc.

Per contra, deep cultivation and shallow seeding produce a plant which tillers well and which is resistant to the ravages of all viruses or pests. Completely healthful production is, however, increased an hundredfold and more.

IMMATURITY.

The terrible effects of faulty diet upon the general health of the people is, at last, becoming generally recognised.

The constant ingestion by the animal of improperly grown and improperly cultivated and immature foodstuffs, which are acid-forming, induces a susceptibility to attack by micro-organisms (Bacterium) both motile and non-motile (Virus).

A fruitful cause of diseases is the constant ingestion of foodstuffs which have not been allowed to arrive at full maturity, do not contain the embryo of life and cannot, therefore, reproduce themselves. New peas, new carrots, new potatoes, new turnips, etc., attractive and palatable though they be, are unsound foodstuffs and in excess are causative of disease, since they contain only sufficient oxygen to control the embryo of insect-life and have not been allowed to mature sufficiently to receive the creative embryo-of-life itself (l'elan vital, entelechy) which only pervades the sap and cell-plasma after the seed has arrived at complete maturity and is in a condition to reproduce itself.

This will be readily observed by placing such immature foods in a box and examining them later on when the oxygen controlling the embryo of insect-life will have been dissipated and the embryo of insect-life itself will have come to life in the form of bugs, lice, beetles, etc.

The results of such faulty diet have not been sufficiently studied heretofore nor guarded against.

The immediate major results are :

1. Alkaline Colon.
2. Successive chills to body-surface leading to lymphatic stasis.

1. ALKALINE COLON.

Faulty diet consisting of immature and improperly-grown foodstuffs—particularly when cooked by usual methods—predisposes all animals to chronic bacterial infection of the intestinal tract.

It is this very fact of constancy of ingestion of faulty diet, apart from the question of the virulence of the bacteria or their

spores, which establishes the danger of the factor of chronicity. To this is due the alkalinity which permits the growth of organisms and compounds causing bowel-foulness which are absorbed into the blood stream.

In all such cases there exist additional factors which assist the process such as bowel-stasis with accompanying retention of faeces, diminution of intestinal reflex and consequent muscle-inertia.

In such an alkaline medium excess of *Bacillus Coli Communis* (which may be the progenitor of all intestinal flora) and streptococci, spore-bearing bacilli, gram-negative bacilli may abound, whereas in a natural acid colon *Bacillus Coli Communis* and lactic acid bacillus are to be recovered mainly.

The *Bacillus acid lacticus*, universal in carnivorous and herbivorous animals and in man, is gram-positive and anaerobic and requires for its successful development the presence of sugar or starch. It can be encouraged to develop enormously by suitable raw diet and, when present in large quantity, prevents the growth of the pathogenic bacilli and their toxin-formation.

Further, the acid medium provided by the *bacillus acid lacticus* prevents the toxic products of protein disintegration and checks the toxæmia due to bacterial products.

Above and beyond this, the acid medium protects the intestinal mucosa and bowel-wall, increasing its resistance to permeability by toxins and noxious food derivatives when these have appeared.

Sinning is the outstanding characteristic of Man: where his diet is concerned, man's ambition should be to keep his sinning within reasonable limits—say 25%—and insist that 75% at least of his intake should be of the nature of raw properly-grown food-stuffs.

2. SUCCESSIVE CHILLS TO THE SKIN.

Toxins produced in the bowel and absorbed into the blood stream, and so affecting the oxygen-carrying substances, are not only precursors of anæmia and general debility but act as interrupters of the metabolism of the cell-protoplasm possibly by "sterilising" the enzymes, auxins and hormones.

The sodium-potassium balance of the cell may be so affected that the cell-membrane becomes progressively impermeable osmotically, refusing admission to the mineral ions and refusing exit to the products of cell-combustion, leading to eventual death of the cell so affected and viscosity of the tissue fluids.

The first step in the production of conditions favourable to successful bacterial attack is the lowered resistance and physiological depression caused by improper feeding, leading to a succession of skin chills.

Repeated chills to the surface of the skin in early youth impede the normal passage of the secretions of the millions of the sebaceous and sudoriferous glands to the external surface, interfering with physiological interchange of gases, with excretion and with temperature.

The secretions of these glands, however, do not cease but find their way into the tissue-spaces and tissue fluids, gradually choking the lymphatic system, producing standstill in the papillæ and elsewhere which may go on to lymphangitis.

Retardation of the capillary circulation follows, permitting extrusion, from the slow-moving stream, of fibrinogen, prothrombin and weakened blood-corpuscles which, otherwise, would have been dealt with by the liver in the formation of bile. This may account for the excess of cholesterol found in the blood of cancer patients.

In this way, viscosity of the tissue-fluids increases *de die in diem* and gradual deposition in the tissues of this "smegma" eventually affects the sensory nerve organs in the skin leading to their inefficiency as receptors of trophic and other influences and loss of irradiation of the motor nerve-endings.

The extent of these implications cannot be pursued to their logical conclusions in a brief treatise such as this but it must be borne in mind that the conditions that obtain in the superficial tissues are eventually extended into the deep tissues, causing these "smegmatous" infiltrations throughout the body with their attendant clinical symptoms.

One must, however, always bear in mind in any consideration of the skin, its correlation with the nervous system.

Although the skin, with its sensitive layers and nerve ramifications and accessories, is only connected with the central nervous system by part of the peripheral nerve system, yet they both have a common origin in one primitive germinal layer which formed the outer surface of the embryonic tube or ectoderm. It is only at a later date in development that these become separated the one from the other by the enclosure of the central nervous system within the organism.

In the early stages of development all influences of the external environment or structure were apprehended only upon the outer surface where the cells acquired the necessary sensitiveness and responsiveness for transmission of these external impressions.

There is, in connection with these facts, an observation which manifests itself (by instantaneous action *inter alia* upon the blood and sweat) to every user of plant hormones by hypodermic subcutaneous injection.

This is, that there exists in the skin a dermal plexus of nerves, dissection of which presumably has not yet been made—which may be altogether distinct from the central nervous system and which may conceivably only come into operation by means of the irradiation of the cutaneous sensory nerve filaments.

Be that as it may, these smegmatous depositions and acid-residues are invariably the precursors of fibrositis, neuritis, arthritis, osteo-arthritis, etc., and must be dissolved and drained by the lymphatics before cure can be effected naturally.

GENERAL OBSERVATIONS.

Metabolic activity depends upon normal transmission of normal neural currents to every organ and its individual cells.

It is in the maintenance of these nervous conductors in the highest state of efficiency, in order to prevent any loss either in quantity or in potential, that the healthy action of all parts of the body depends absolutely.

That this electric conductivity in nerve differs from ordinary electrical manifestation in a live circuit was noted by Dr. T. H. Bowman who remarked that, when a nerve fibre is stimulated at any point, it immediately acts not only as a conductor but that, as the point stimulated there is a charge generated and a current transmitted in both directions apparently as the result of accumulated energy in the substance of the nerve.

He called this neural electric manifestation "neuro-electricity," the importance of which cannot be exaggerated.

No cell can perform its functions unless its contents are ionised and so able to act as electrolytes—a condition governed by the mineral constituents of the blood, the absence of which renders the cell unable to function. Ions and electrons are a necessary condition for, and precursor of, all electric conductivity, in solids as in liquids, and it is this neuro-electricity, acting on the ionised cell content which governs metabolic activity.

Any undue interference with these neuro-electrical currents, either by reduction of their potential or quantity, or loss of conductivity or insulation in the nerve substance leads to metabolic disequilibrium followed by congestion and increase in temperature.

Another point is well brought out by Professor Charles Fox in "Mind and Its Body," as it deals with the effects of toxic and chemical agencies upon the neuro-potential of nerves.

Page 31. "Now L. Lapicque (Principe pour une theorie du fonctionnement nerveux) has shown that there is a physical basis for the restriction of the nervous impulses to certain directions. Neurons are not only anatomically distinct, but vary in specific conductivity. Each neuron, just like the different strings of a musical instrument, has its own periodicity.

"When an impulse has travelled along a certain neuron it ultimately reaches some synapsis or network of junctions with other neurons. The final direction of the impulse will be determined by the relative periodicities of the neighbouring fibres. The characteristic resonance, or time constant, of each nerve is called its chronaxy. If an electric current of constant intensity is suddenly passed through a nerve fibre connected to a muscle and continued indefinitely, the start of the current will provoke a contraction. Now, in accordance with the 'all or none' rule a certain liminal intensity of the current will be necessary to cause a contraction, and below this intensity no effect will be produced. Such threshold of intensity for any particular nerve is called its rheobasis.

"If the duration of the current is progressively shortened, a time will come when no impulse is set up by the stimulus: and in order to provoke an impulse, with a current of very short duration, it will be necessary to augment its intensity. The minimum duration necessary to attain the threshold of excitability, with twice the rheobasic intensity, is taken to be the measure of the chronaxy of a nerve; and differs in different nerves. Thus, whilst the same 'all or none' rule of excitability applies to every nerve fibre, there are enormous differences from one to another, depending on their chronaxies. When a neuron is stimulated the action current which travels along it will have its course into other neurons determined by their chronaxies. Each neuron, by virtue of its own time constant, acts as a sort of resonator picking up impulses from other isochronic neurons.

"There is, however, a certain amount of irradiation when the exciting cause reaches greater intensities, bringing new fibres and new isochronisms into play. Moreover, as neurons are living structures *their chronaxies can be considerably modified by various means, as by fatigue, toxic or other chemical agencies, as well as by increasing the intensity of the excitation.*"

Now the cell content, as Graham showed, is protoplasm, which is a colloid. As such, due probably to their high molecular weight, colloids will not diffuse through animal membranes nor act as conductors of

electricity, but associated with them are substances with opposite qualities which he called "crystalloids."

These readily diffuse through animal and vegetable membranes: they have a comparatively small molecular weight and are all conductors of electricity. Both colloids and crystalloids are absolutely necessary to the vital functions of a cell, the colloid ("the dynamic state of matter") giving the stabilising condition necessary for the permanence of the structure and the crystalloid ("the static state of matter") providing the means for the nourishment of the cell and the removal of its waste-products.

In the metabolism within the organism, transition between the respective forms of colloids into soluble substances takes place where these proteins are acted upon by digestive ferments and converted into colloid proteoses and less-colloidal peptones.

Other substances of higher complexity than proteins and more unstable are found in the cell-plasma, called hormones, and these have functions in regard to specific changes and organs. The formation of these hormones in certain secreting glands is entirely dependent upon the due supply of neuro-electricity to the gland-cells, and without the stimulating effect of hormones healthful life is impossible owing to glandular and endocrine insufficiency.

Under proper methods of cultivation, where undue leaching out of the all-important minerals has been prevented, salts from the soil in solution and directly transferred from inorganic to organic forms, are taken up by the plant-roots as a very weak solution containing sodium, potassium, calcium, magnesium, iron, etc., in association with sulphuric, hydrochloric and phosphoric acids, together with the compound salts of ammonia, etc.

These are the mineral constituents which the plant cell, deriving its energy from the action of sunlight upon chlorophyll, builds up into the complex vegetable protoplasm—in no wise differing from animal protoplasm—with the carbon derived from the atmospheric carbonic acid.

Actually these salts do not themselves pass into the cell-plasma but only their ions. These ions disappear very rapidly in the cell-reactions and need to be replaced continually from without, otherwise no cell-activity is possible.

It is clear, therefore, that the part played by improper methods of cultivation, under which, *inter alia*, these essential minerals are, in large measure, lost through constant leaching has a dire and determining effect upon the physiological behaviour of the unit-cell upon the integrity of which the health of the whole organism depends not only in respect of growth but also in respect of function.

SUMMARY.

The importance of the foregoing facts, scant though they be, obviously demands more elaboration and furbishment than space allows to remove them completely from the realm of empiricism.

The contention of the writer is that departure from the normal standard of immunity of disease is *an artifact* and is due, in the final analysis, to the constant ingestion by the human of immature and improperly cultivated foodstuffs.

Many generally accepted principles, also, require complete revision in the light of present-day knowledge, notably the idea that cow's milk is a balanced and perfect food for the young—even after formation of teeth.

Cow's milk has undoubted advantages for the calf but is quite unsuitable as a continuing food for human children. It contains far too much protein and mineral salts and far too little sugar: cow casein forms a solid coagulum in half-an-hour or so whereas human casein forms a flaky, flocculent, easily-digested coagulum and takes three times as long to do so.

Cow's milk is one of the greatest etiological sources of excessive lymphoid tissue, of enlarged glands, tonsils, adenoids—calling for constant surgical interference—common colds and catarrh: it is also a major source of epidemic and systemic disease: tuberculosis, typhoid, and constipation, toxæmia, etc.

As Dr. James Pursell somewhat caustically puts it: "It is rather difficult to build mahogany tables of hemlock or grow normal human beings from material intended to produce cows."

The only source of vitamins is from the sun and earth represented by vegetables, grains, fruits and nuts, all of which, when properly cultivated, contain electro-magnetic forces in the embryo of life: for this reason vegetable (soya, etc.) and fruit juices are far more valuable as health and body-builders than cow's milk.

Another principle, general in practice, which calls for clamant condemnation, is that of using aluminium for cooking purposes.

There is, perhaps, nothing which so quickly and adversely affects "soil" as aluminium, encouraging rapid change in intestinal flora and its development and preparing the way for pathogenic invasion and toxin formation.

Aluminium compounds such as the acetate, chloride, phosphate and sulphate are corrosive poisons and gastro-intestinal irritants. They act as catalysts producing anæmia: in their presence growth of algæ and bacteria is checked.

Owing to their action upon the intestinal mucosa, permeability of the bowel-wall is increased and the passage of toxins into the blood-stream is facilitated causing "clumping" of the red corpuscles, for aluminium compounds are protoplasmic poisons and destroy the endothelium of the digestive tract. Like all metals, their general characteristic is that their effect is cumulative.

DIAGNOSIS.

Infiltrations of the skin, or smegmatous conditions and lymph stasis, with or without fibrotic nodules can always be discovered by light palpation with the finger: they occur in at least 75% of the race.

When these occur in the shoulder-girdle they are accompanied by the condition of more or less marked fibrositis and panniculitis with resultant neuritis, arthritis, etc.

In proportion as this condition ascends the cervical vertebræ as far as the occipito-nuchal line is there evidence of aural and ocular disturbance through involvement of the parasympathetic nerves. When these infiltrations occur in the pelvic girdle over the sacrum with formation or not of a well-marked "sacral pad," there is always corresponding involvement of the lumbosacral cord of the sympathetic or parasympathetic nerves and interference with the hypogastric and pelvic plexuses.

As these plexuses govern the lower bowel and genitalia it is not remarkable that this smegmatous condition is always present in such cases as rectal carcinoma, prostatitis, etc., and accompanies all diseases of the female genitalia.

Light palpation of the abdominal surface will also reveal the surface tension consequent upon deep lymph stasis with involvement of the lacteals.

Tension can always be detected over the liver in affections of that gland; over the gall-bladder in cholecystitis; over the duodenum in duodenitis or ulcer; over the pylorus in cancer or stenosis; in the epigastrium over the coeliac axis and its allied plexuses, e.g., cardiac, hepatic, lienic, mesenteric, aortic, etc., and over the portal vein, particularly at the point of bifurcation, in disease of the lower bowel such as hæmorrhoids or cancer. It is suggested that no exploratory laparotomy should ever be attempted until the condition of the nervous segment governing the particular area of pain manifestation has been explored by the finger for involvement, and if found, for treatment—notably the areas of distribution of the 10th, 11th and 12th thoracic nerves.

ANCILLARY METHODS OF DIAGNOSIS.

1. Microscopy.
2. Highest frequency.

1. MICROSCOPY. The recent remarkable discovery of an extension of the law of optics whereby magnification in intensified adumbrates a new and promising field of diagnosis.

Present-day methods of magnification up to 1,600 X have been extended under this method by the use of mono-chromatic rays through a series of crystal cubes to magnification of 32,500 X.

By means of this newly-devised microscope the whole field and the perimeter are equally distinct and stereoscopic. Every pathogenic organism is shown to be possessed of its distinct colouration and frequency and so to establish definite authenticity of specific disease according to present-day nomenclature even with 10,000 X.

For instance, in an epidemic of typhoid fever the filter-passing virus can be detected in a blood-stream many days—certainly 14—ahead of the Widal test.

Further, the elusive ultra-microscopic non-filtrable virus is proven to be a non-motile bacterium; each of the 32 viruses so far isolated has its definite particular and peculiar rate of colour vibration and frequency.

The most important revelation, however, is the existence of certainly three and probably four viruses in all forms of cancer, all of which appear to be instantly destroyed by the passage through the host of a corresponding oscillatory frequency, followed gradually by improvements in clinical symptomatology.

It is confidently anticipated that further research here may throw great light upon the cure of all forms of morbid processes provided resistance in the patient has not been completely undermined, and provided there has been no undue surgical interference.

2. HIGHEST FREQUENCY. Through the improved and extended methods of the original work of Dr. Albert Abrams by certain medical practitioners such as Dr. Mather Thompson and others, particularly Dr. Guyon Richards, and by lay-practitioners such as the late Mr. A. E. Baines and Mr. Howard Parsons, etc., it is now not only possible to discover exactly what tissues are adversely affected, and exactly what mineral or glandular deficiencies or excesses have contributed to alteration in soil whereby the intestinal flora can successfully develop, but also, by prescribing remedies of similar frequency to the highest frequencies found, to restore the body to equilibrium and health.

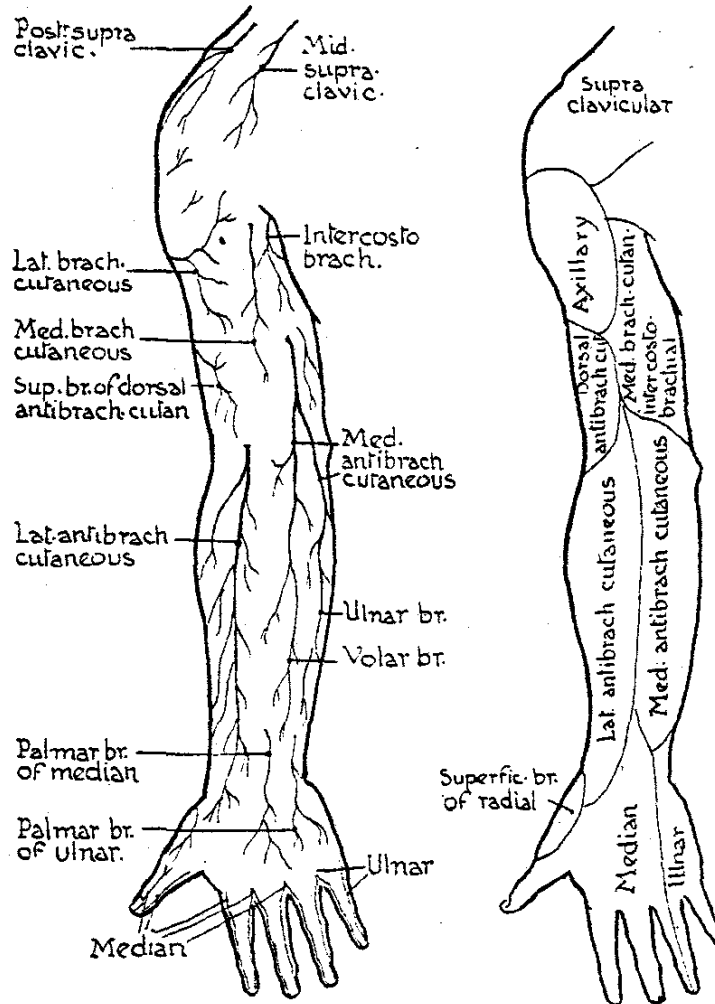
Royal R. Rife checked Dr. Abrams instruments and found them to be excellent. It was Rife who used his virus microscopes to calibrate frequencies to devitalization points of the micro-organisms so that precise frequencies to kill them were found. The rates were originally called Mortal Oscillatory Rates or "MOR" in the audio range. It was Rife who provided this information to Gonin and also the Virus Microscope to see 32,000X.

The cutaneous nerves of the right upper extremity.

DIAGRAM showing the segmental distribution of the cutaneous nerves of the right upper extremity.

• ANTERIOR ASPECT •

• ANTERIOR ASPECT •

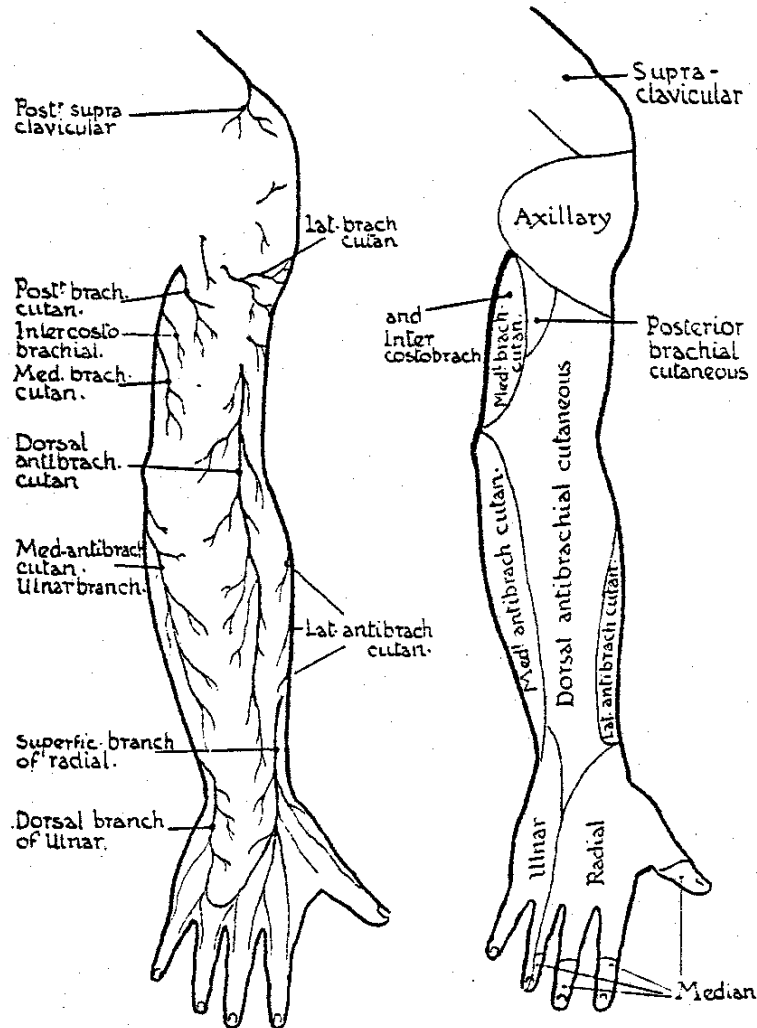


The cutaneous nerves of the right upper extremity.

DIAGRAM showing the segmental distribution of the cutaneous nerves of the right upper extremity.

POSTERIOR ASPECT

POSTERIOR ASPECT

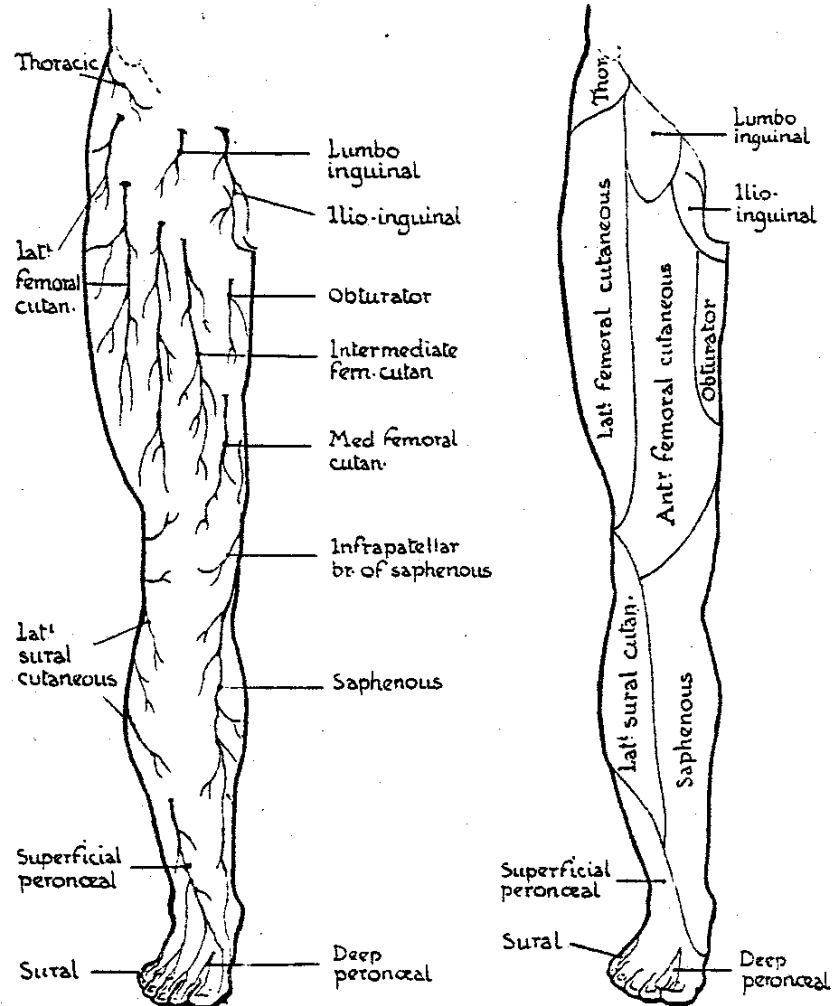


The cutaneous nerves of
the right lower extremity.

ANTERIOR ASPECT.

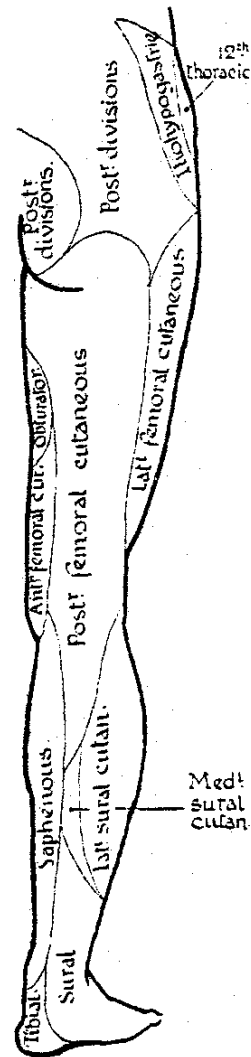
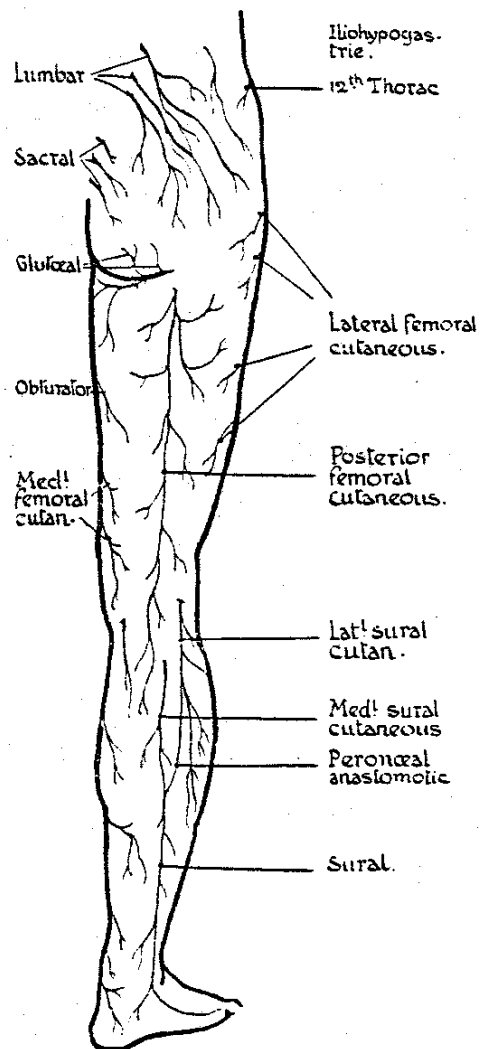
The segmental distribution
of the cutaneous nerves
of the right lower extremity.

ANTERIOR ASPECT.



The cutaneous nerves of
the right lower extremity.
• Posterior aspect.

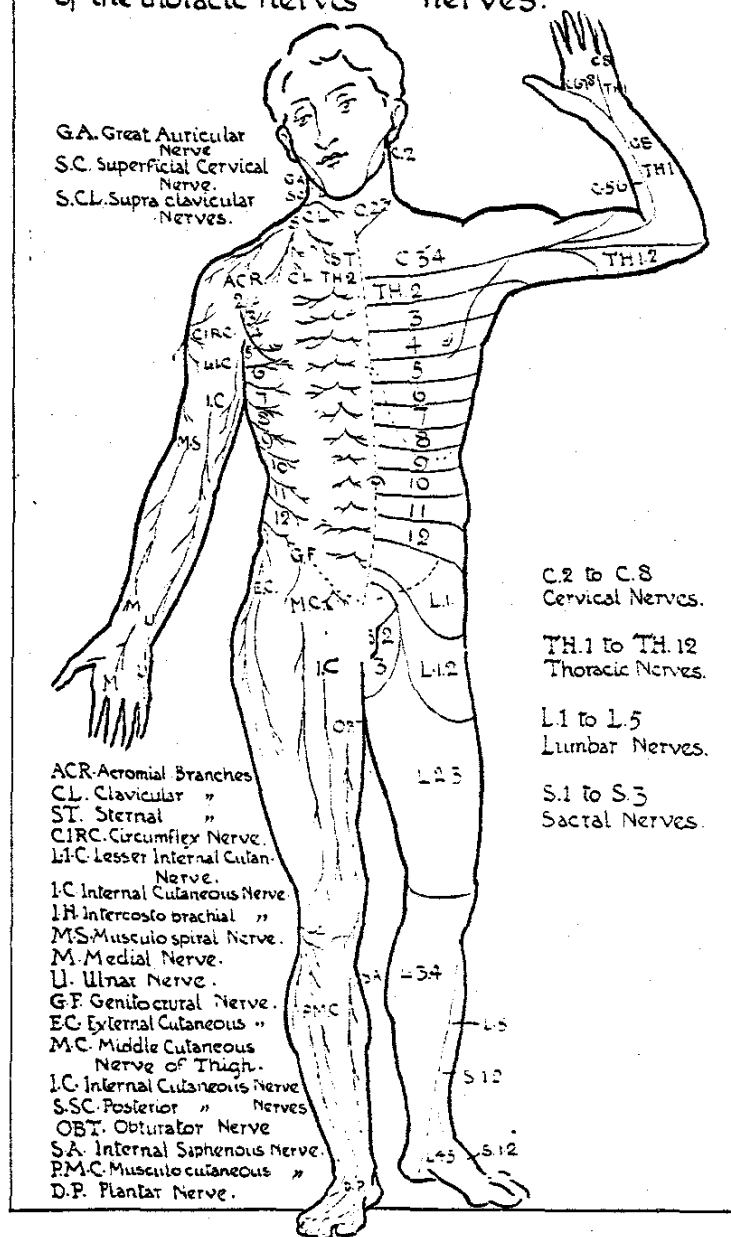
The segmental distribution
of the cutaneous nerves
of the right lower extremity.
• Posterior aspect.



DIAGRAMMATIC REPRESENTATION OF THE DISTRIBUTION OF CUTANEOUS NERVES

Peripheral nerves
and terminal branches
of the thoracic nerves

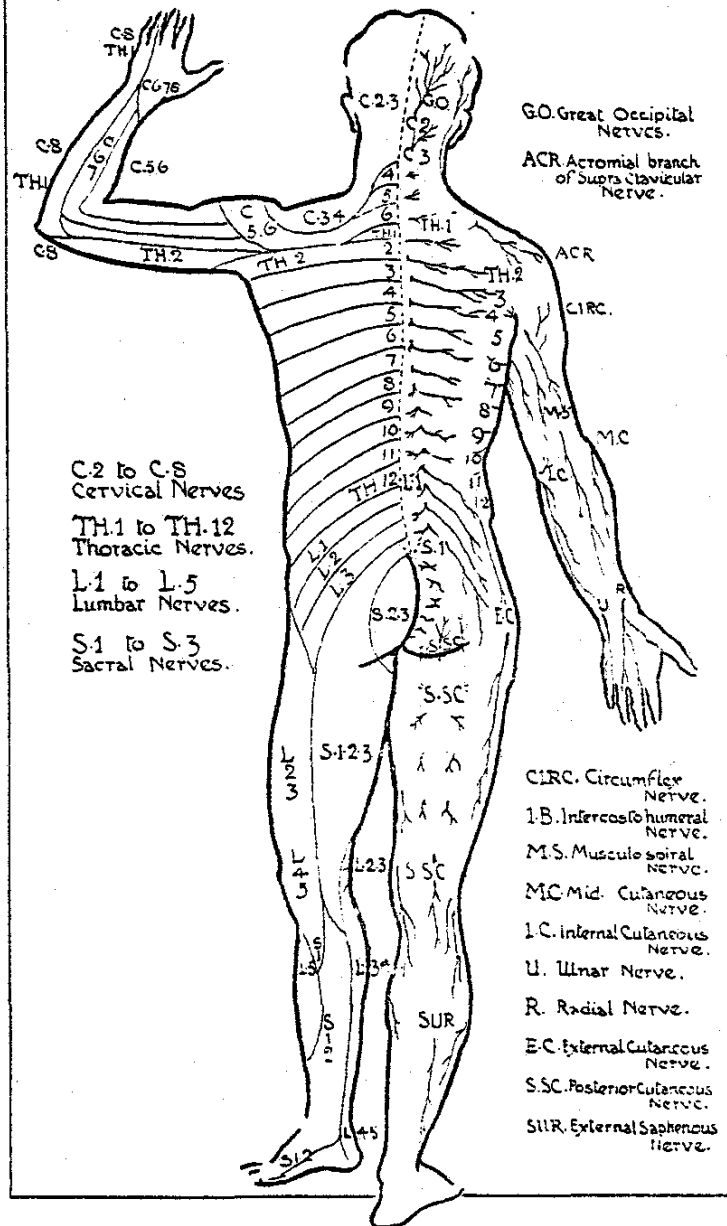
The skin areas
supplied by the spinal
nerves.

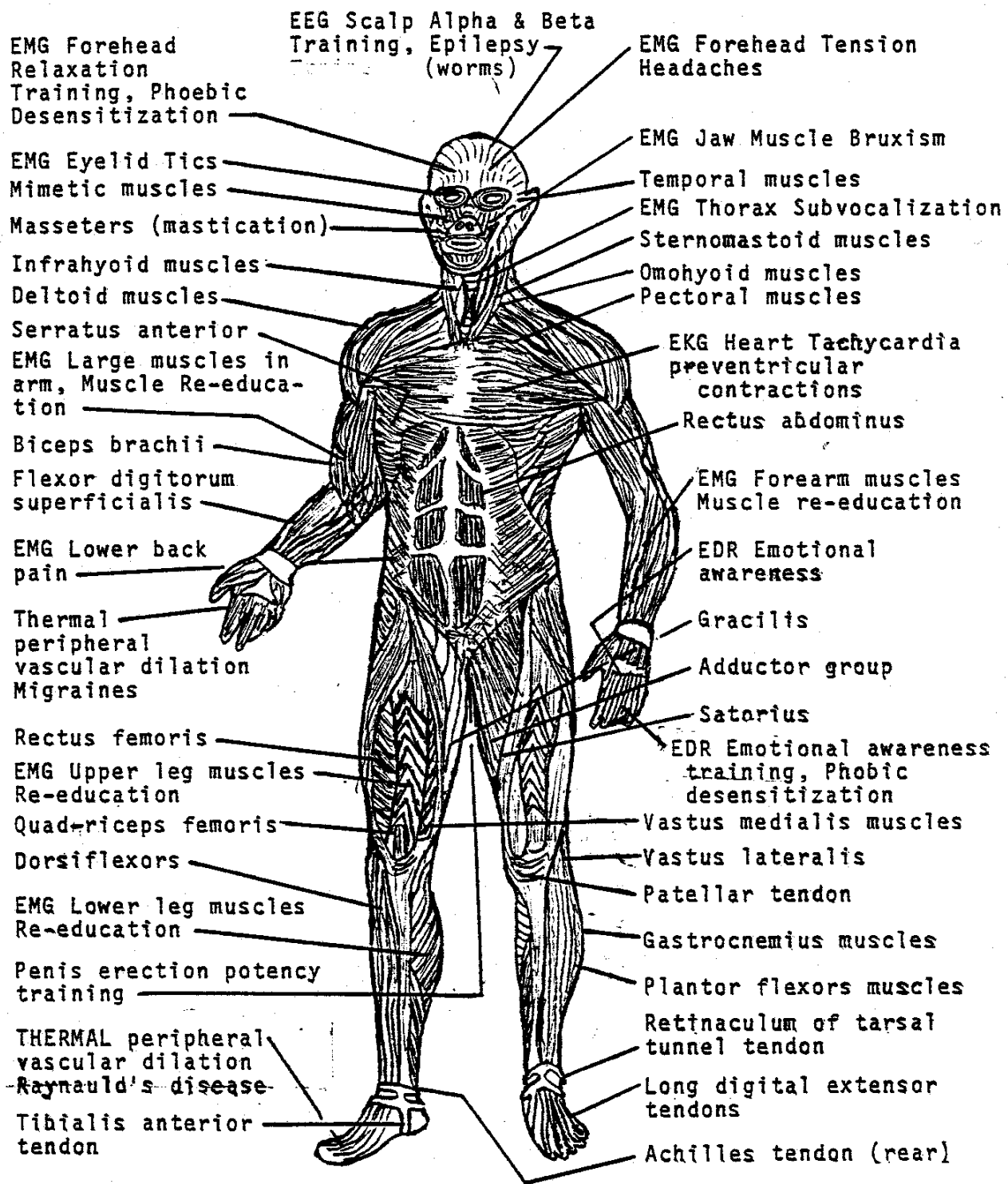


DIAGRAMMATIC REPRESENTATION OF THE DISTRIBUTION OF CUTANEOUS NERVES

Peripheral nerves
and terminal branches
of the thoracic nerves.

The skin areas
supplied by the spinal
nerves.





BIOFEEDBACK MONITORING

Monitoring effects of mind states on body functions of polarity that detects nerve signals for recognized visual or auditory displays. By bringing such body activity into conscious awareness, the knowledge to voluntarily regulate specific body functions is now possible.

Electronic Instruments are now available for such purposes.

ELECTRO PHYSICAL THERAPY CHART

SYMPATHETIC NERVOUS SYSTEM

Positive to Stimulate; Negative to Dilate or contract

PERSISTENT HICCOUGH: Negative to 3rd, 4th, 5th cervicals

DECREASE BLOOD SUPPLY to Lung Heart, kidneys, spleen, head & stomach; Negative to 7th

INCREASE BLOOD SUPPLY to Lung Heart, kidneys, spleen, head & stomach, mammary glands Positive to 3rd and 4th

REDUCING EYE STRAIN, stomach exit contraction, Negative: 5

GALL BLADDER CONTRACTION - Negative; KIDNEY DILATION - Negative; LIVER STIMULATION OF LIVER - positive 6th & 7

CONTRACTION of Organs & Blood vessels in stomach, liver, bowels, bladder, and uterous tubes; Negative; post operative adhesions; 7th & 8

DILATION OF GALL BLADDER and duct; Negative; 9th cervical

DILATION TO ORGANS: Stomach, liver, abdominal blood vessels, intestines, urterers, uterus, cervix, gall bladder, bowels; Negative; blood supply to lungs; 10th, 11th, & 12th

PROSTATE CONSTRICTION, Negative on 12th Thoracic

STIMULATION TO ORGANS: liver, stomach, abdominal blood vessels, intestines, ureters, uterus, cervix, gall bladder and bowels: I, II, and III

CONTRACTION TO ORGANS: liver, stomach, abdominal blood vessels, intestines, ureters, uterus, cervix, gall bladder and bowels: I, II, III

HERTZ

20

5

24

20

9

7

18

7

8

6

12

20

11

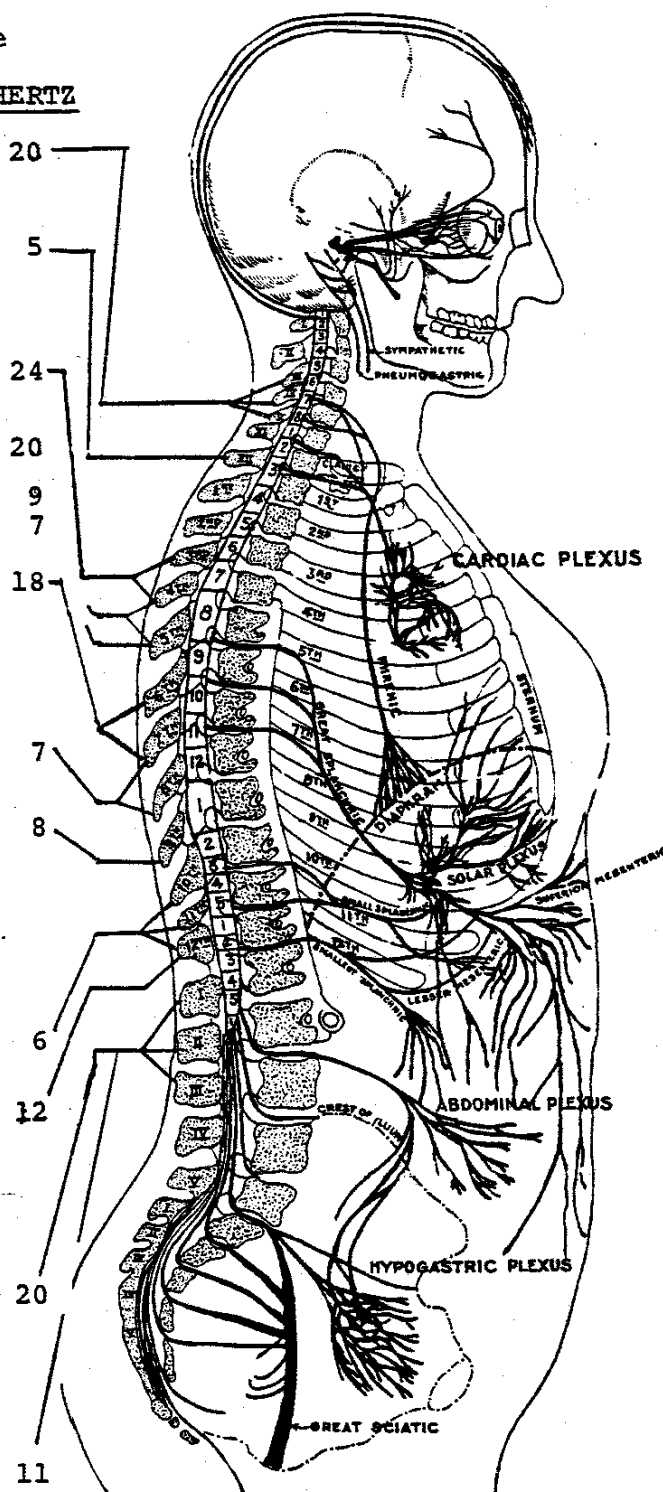
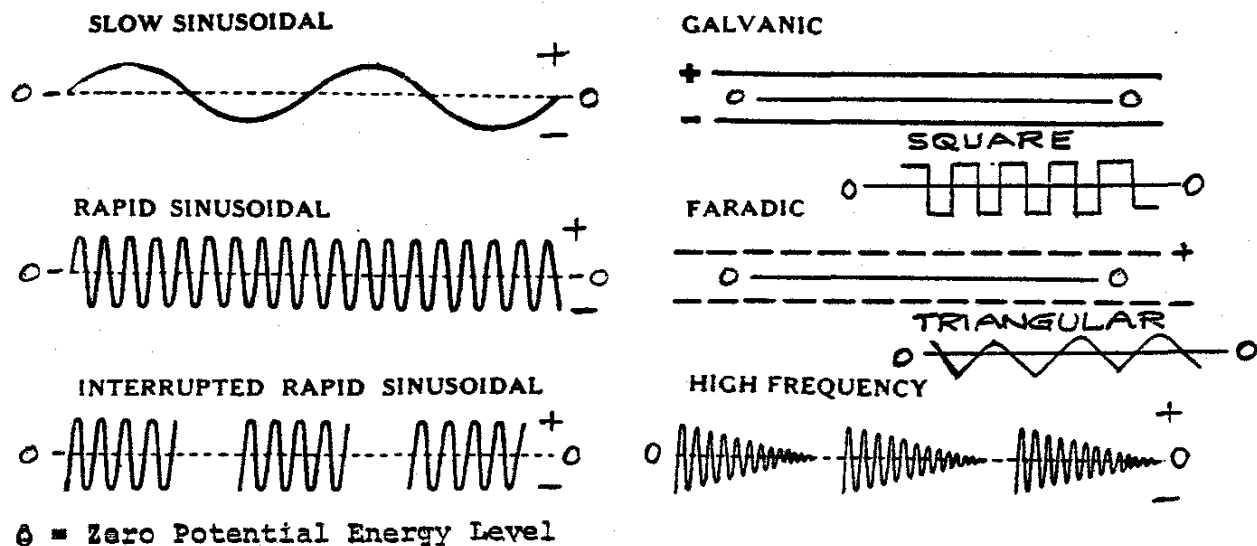
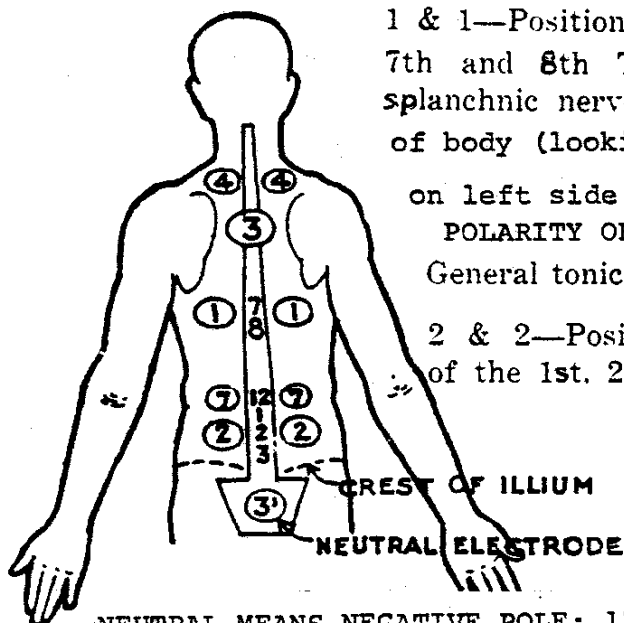


Diagram of Different Forms of Electricity



APPLY NEGATIVE OR POSITIVE ALSO FROM POLARIZERS

CHART NO. 1.



1 & 1—Position of electrode on each side of the 7th and 8th Thoracic vertebrae for splanchnic nerves. Use positive on right side of body (looking forward) and negative pole

on left side of body (looking forward)
POLARITY OBSERVATION TYPICAL ON ALL POINTS
General tonic to nervous system.

2 & 2—Position of electrodes on each side of the 1st, 2nd and 3rd lumbar vertebrae for the viscerio and vaso reflex of constriction and stimulation below diaphragm.

(Patient lying on back)

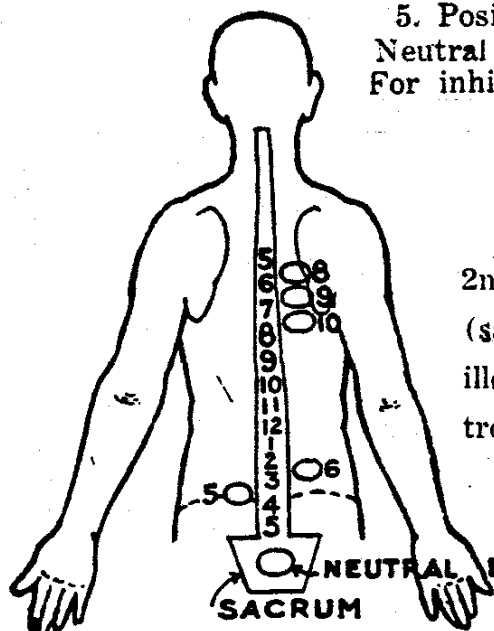
NEUTRAL MEANS NEGATIVE POLE: 17 Hertz constrict (1 to 7)
44 Hertz stimulate

3 & 3—Position of electrodes to obtain viscerio and vaso reflex of dilatation above diaphragm.

4 & 4—Position of electrodes to obtain viscerio and vaso reflex of constriction and stimulation above diaphragm.

7 & 7—Position of electrodes to obtain viscerio and vaso reflex of dilatation and inhibition below diaphragm.

CHART NO. 2.



5. Position of active electrode for left ovary. Neutral electrode on sacrum. For inhibition of left ovary use 1 Hertz

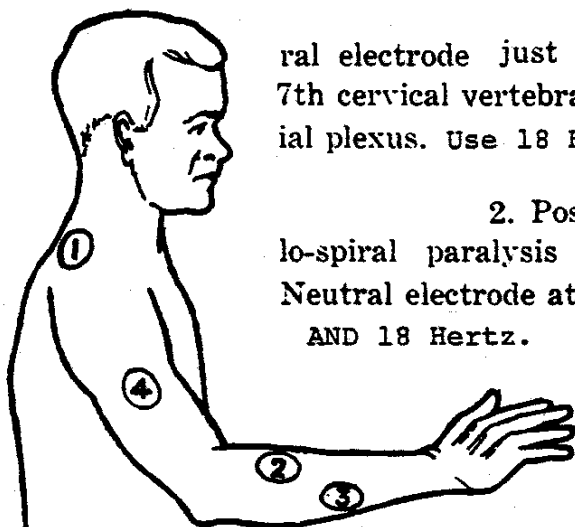
6. Position of active electrode between 2nd and 3rd lumbar vertebrae on right side (same technique as No. 5) for stimulating illeocecal valve and appendix, neutral electrode on sacrum. For inhibition use 10 Hertz

8. Position of active electrode for stimulating (technique same as No. 5) stomach and dilating pylorus with neutral electrode on sacrum. Use 20 Hertz

9. Position of active electrode for stimulating and contracting gall-bladder. (Same technique as No. 5) Neutral electrode on sacrum. Use 16 Hertz.

10. Position of active electrode for stimulating autonomic center of liver with neutral electrode on sacrum. Use 20 Hertz.

CHART NO. 3.



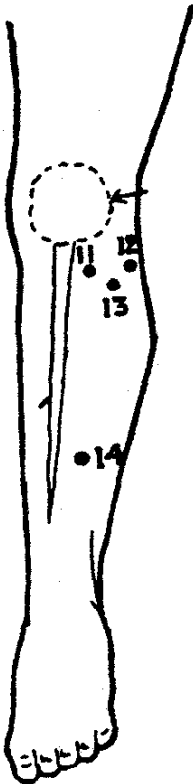
1. Position of neutral electrode just a little to the right of the 6th and 7th cervical vertebrae stimulating the roots of the brachial plexus. Use 18 Hertz.

2. Position of active electrode for musculo-spiral paralysis stimulating extensors of forearm Neutral electrode at 1. USE + POLARIZERS ON BOTH SIDES AND 18 Hertz.

3. Position of active electrode in stimulating flexors of the forearm and hand. Neutral electrode at 1. Use 18 Hertz.

4. Motor points for stimulating musculo-spiral nerve.

CHART NO. 4.



11. For external popliteal paralysis showing position of active electrode at the motor points of tibialis anticus. Neutral electrode on sacrum. Use 240 Hertz.

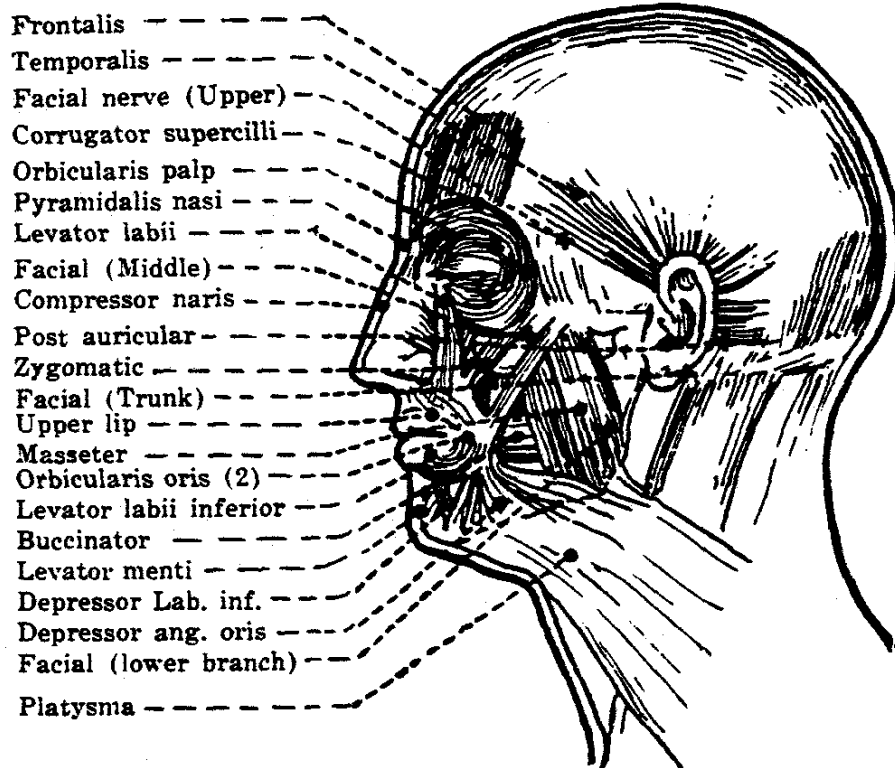
12. Position of active electrode for peroneus longus. Neutral electrode on sacrum. Use 240 Hertz.

13. Position of active electrode for extensor communis digitorum. Neutral electrode on sacrum. Use 240 Hertz.

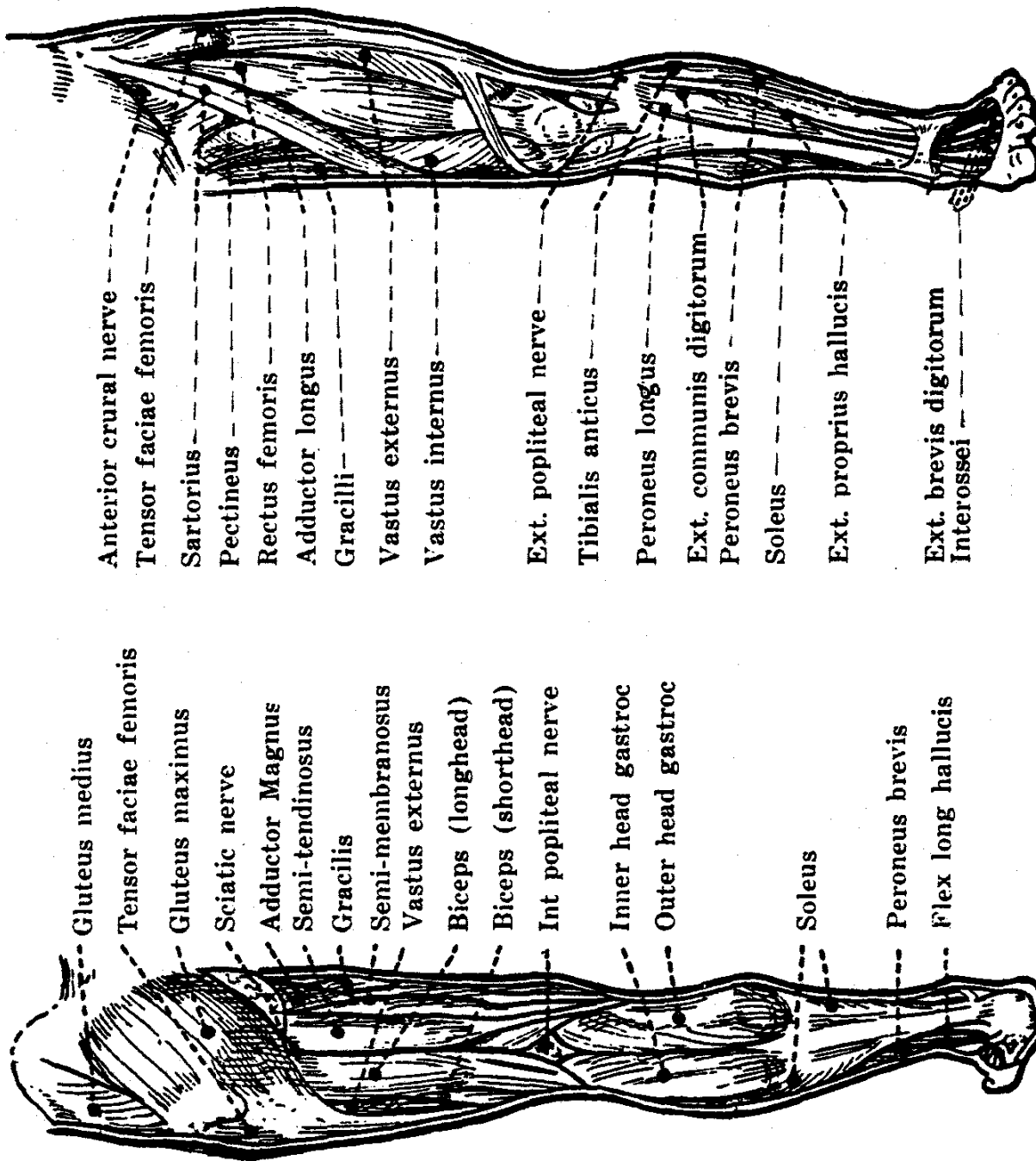
14. Position of active electrode extensor proprius hallucis. Neutral electrode on sacrum. Use 240 Hertz.

15. Same technique any muscle of body.

CHART NO. 5



MUSCLE



Anterior crural nerve

Tensor faciae femoris

Sartorius

Pectineus

Rectus femoris

Adductor longus

Gracilli

Vastus externus

Vastus internus

Ext. popliteal nerve

Tibialis anticus

Peroneus longus

Ext. communis digitorum

Peroneus brevis

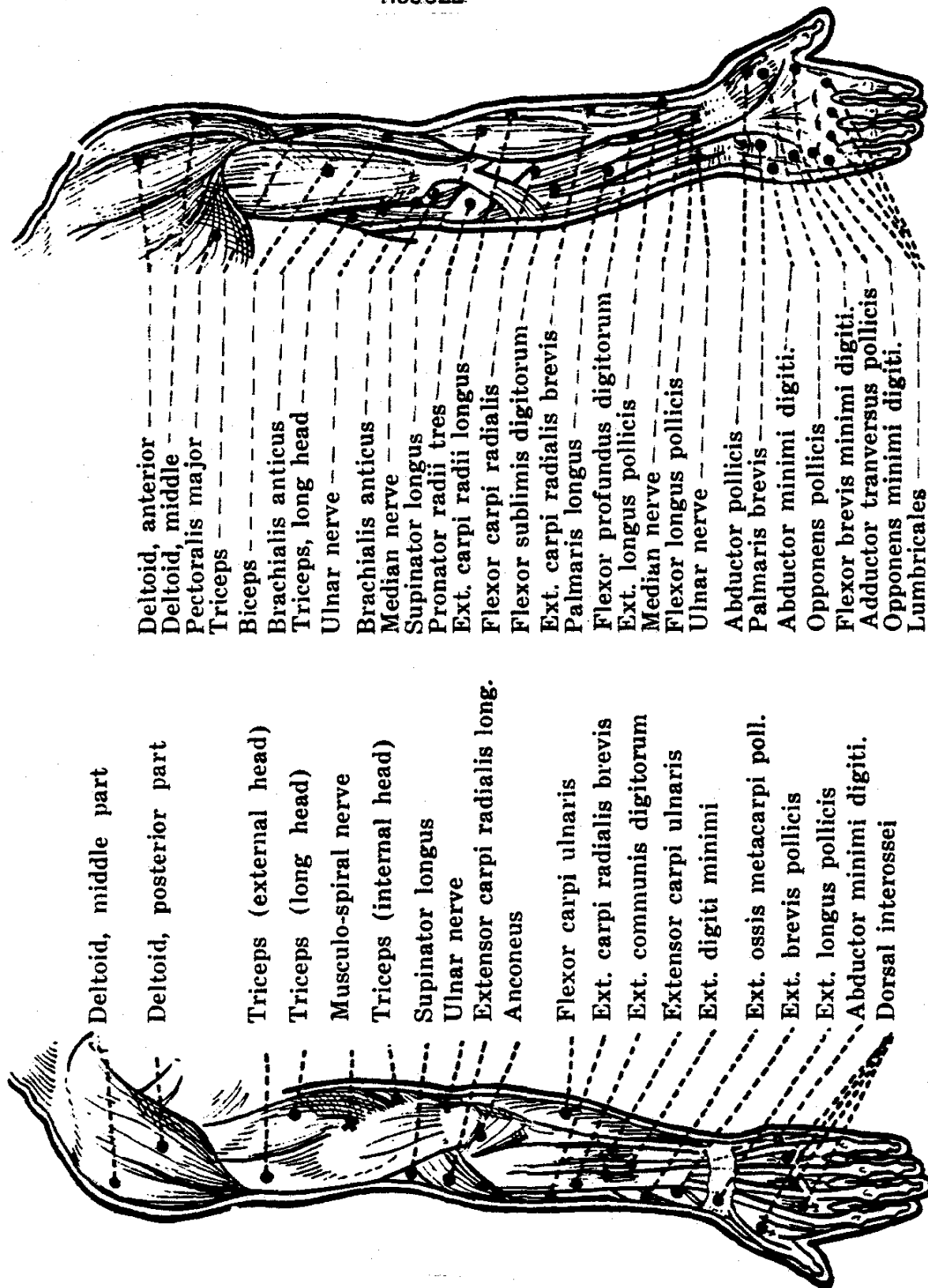
Soleus

Ext. proprius hallucis

Ext. brevis digitorum

Interossei

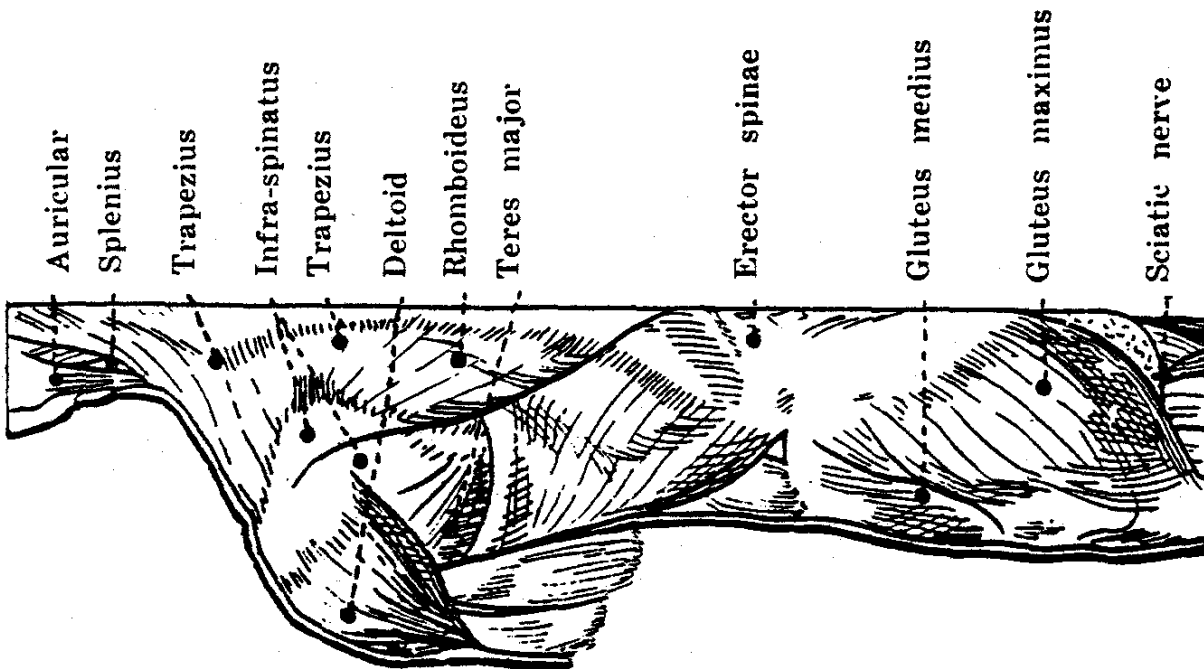
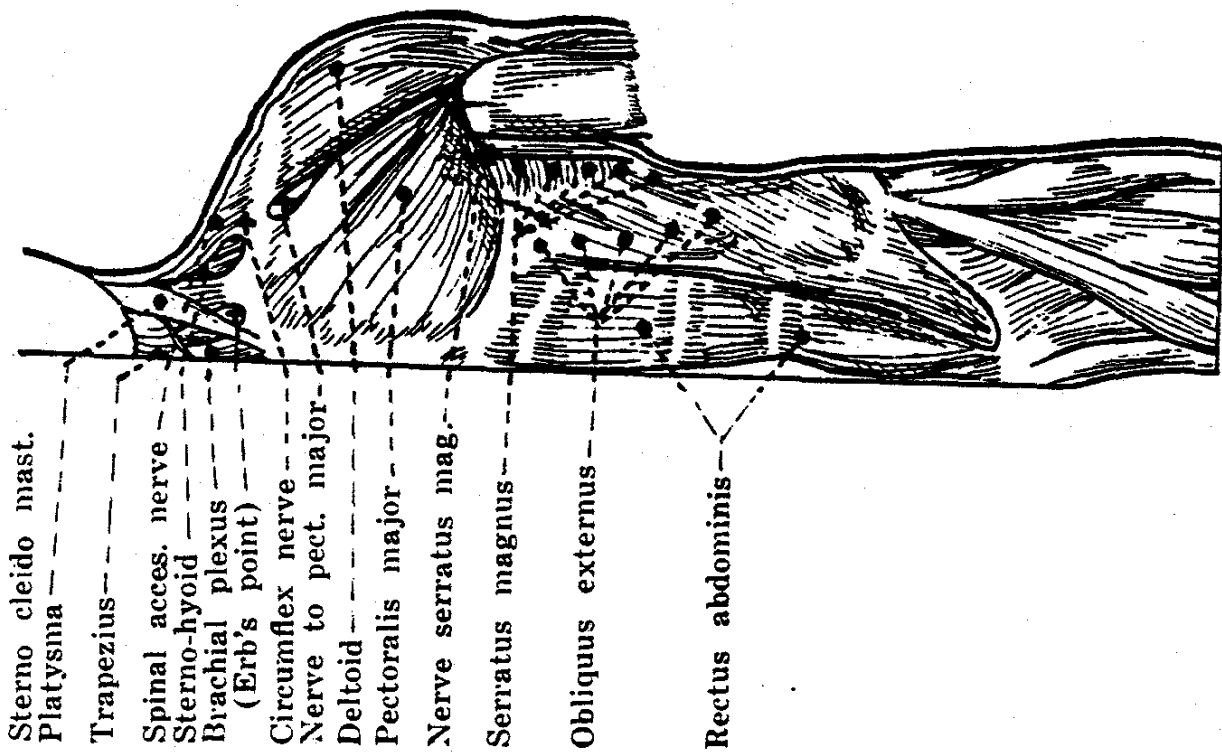
MUSCLE



Deltoid, anterior
 Deltoid, middle
 Pectoralis major
 Triceps
 Biceps
 Brachialis anticus
 Triceps, long head
 Ulnar nerve
 Brachialis anticus
 Median nerve
 Supinator longus
 Pronator radii tres
 Ext. carpi radii longus
 Flexor carpi radialis
 Flexor sublimis digitorum
 Ext. carpi radialis brevis
 Palmaris longus
 Flexor profundus digitorum
 Ext. longus pollicis
 Median nerve
 Flexor longus pollicis
 Ulnar nerve
 Abductor pollicis
 Palmaris brevis
 Abductor minimi digiti
 Opponens pollicis
 Flexor brevis minimi digiti
 Adductor transversus pollicis
 Opponens minimi digiti
 Lumbricales

Deltoid, middle part
 Deltoid, posterior part
 Triceps (external head)
 Triceps (long head)
 Musculo-spiral nerve
 Triceps (internal head)
 Supinator longus
 Ulnar nerve
 Extensor carpi radialis long.
 Anconeus
 Flexor carpi ulnaris
 Ext. carpi radialis brevis
 Ext. communis digitorum
 Extensor carpi ulnaris
 Ext. digiti minimi
 Ext. ossis metacarpi poll.
 Ext. brevis pollicis
 Ext. longus pollicis
 Abductor minimi digiti.
 Dorsal interossei

MUSCLE



ADVANTAGES OF USING POLARITY

Polarity therapy is an application of energy that regenerates the cells of the body and aids healing and reduces pain.

Frequency Instrument energy when applied to the body induces a voltage of 1 to 5 volts that can be measured at any part of the skin of the body with an ordinary vacuum tube voltmeter.

The application of audio frequencies, harmless to the human cells, is preceded by the drinking of an organic electrolyte some 5 to 15 minutes prior to use which gives better conductivity and consists of: Organic sodium - 1/2 teaspoon of Whey and organic potassium - 1/2 teaspoon of Rice polishings in 1/2 glass of polarized water - polarized positive for 2 minutes with magnetic polarizers.

After using the energy from a Frequency Instrument, another drink of 1/2 teaspoon of acidophilus in 1/2 glass of positive polarized water or other suitable liquid is suggested to recover "good" bacteria.

The application of magnetic polarizers provides energy to aid and sustain body functions which are depleted by lacking nutrients in food and drink that are currently available from polluted air and soils.

Experience has shown that by polarizing skin areas, the healing processes can be effectively supported. Magnetic polarizers can penetrate up to 14 inches deep right through the body and quickly relieves pain and suffering from almost any source of trouble.

The deep penetration of Frequency Instruments is also of great aid to the body cells by regeneration and reactivation - all pathogens are readily devitalized by penetrating electrocuting energies that reach to every cell in the body. It is important to reduce time of use so that the lymphatic system does not become overloaded.

Colonics have been eliminated by using magnetic polarizers, 2 1/2 hours - positive side up toward the body areas of the colon. Worms have been readily devitalized by Frequency Instruments in the colon and blood areas.

Pendulum dousing has demonstrated another effective aid in finding what, and where the trouble may be and is becoming more useful and effective in trained hands. The transmittal of energy with positive polarizers, and Frequency Instruments is developing into a new science of applications that are demonstrating good results.

Application of magnetic and cosmic polarizers has replaced needle insertion with deep penetration polarity from acupressure and acupuncture methods in a noninvasive technology that shows great promise of solving pathogenic problems that plague all citizens.

Main Advantages: No radiation, no infection risk, No danger, Simple application, short time periods, precise point application not necessary, no pain required, Complete penetration of the body.

ELECTRON THERAPY POLARIZER POLARITY ENERGY REGENERATION

APPLICATION OF POLARIZED ENERGY TO BALANCE

THE COSMIC ENERGY LIFE FORCES

WHAT IS ELECTRON THERAPY?

Electron Therapy is the science of balancing the cosmic life energy in the human body. The vital energy circuits embrace electrostatic, magnetic and electromagnetic field and conductivity in the human body.

Vital energy balancing and spurious fields in the body are the basic recipients of this corrective and regenerative energy. The potential energy levels at all parts of the body function when sufficient energy is induced from cell regeneration and oxidation accompanied by the giving off of electrons and protons that provides the necessary energy level in the nervous system to sustain the life forces. The objective is to know their anatomical relationship and functions as positive and negative polarities and to balance them by scientific skill and electron energy by application of polarizers, frequency instruments and ray tube instruments and pulsed magnetic pyramids and through the use of the new cosmic polarizer. Exercise, polarized diets massage and love aid in the accomplishment of good health.

APPLICATIONS WITH POLARIZERS N = Negative; S = Positive

<u>CONDITIONS</u>	<u>POLE</u>	<u>MINUTES</u>	<u>TIMES USED DAILY</u>
Healing and regeneration	S	60 to 380	2X
Infections and irritations	N	60	3X
Arthritis and pain-----	N ----	30 -----	2X
Bladder pain and infection	N	30	2X
Bleeding - menstrual, etc.	N	30	2X
Blood clots-plaque buildup ---	N ----	30 -----	2X
Blood pressure - high	N	30	2X
Blood pressure - low	S	30	2X
(Apply to right ear and on down the artery 25 min & 5 over heart)			
Body fluid build up-----	N ----	30 -----	2X
(Apply Four Inches above and then below swelling to draw it out)			
Aid in healing bones and pain	N	30	2X
Aid in healing joints-----	N ----	30 -----	2X
Heal broken bones as an aid	S	30 to 90	2X
and apply above the bone	N	30 to 90	2X
(N pulls fluids to aid in repairing the knitting of the bone)			
Brain (use small round units)	N	30	2 - 3X
(1/2 inch diameter to 3 inches in diameter aids in localizing)			
Bronchitis: apply three places;			
Nose-----	N ----	8 -----	3X
Throat	N	8	3X
Lungs	N	8	3X
Burns (do not touch area)-----	N ----	45 -----	2 - 3X
Cancer	N	45	3X
Gas and indigestion	S	30	2 - 3X
Constipation (colon area)	S	30 - 45	3X
Ear-----	N ----	30 -----	2X
Emotions:if aggressive use	N	15	3X
if dull,inactive use	S	15	3X

Cataracts	N	12	2X
Glaucoma	N	15	2X
Restore hair color-----	S	30	1X Night
Headaches	S	15	1X
(Apply to lower stomach area and right side of head)			
Heart	S	10	2X
Arresting congestion-----	S	15	3X
Liver	N	30	3X
Muscles - Firm up with	N	30	1X- 3X
After Firm use S until suitable strength occurs			
Note: N reduces calciums. S increases swelling, infection, inflammation.			
Use N on one side and S on opposite side in optional cases			
Hemorrhoids/Piles -----	N	30 to 45	3X
Prostate	S	30	2X
Sex	S	20	2X
Shoulders,/Neuritis-----	N	45	2X
(also applied for nerve inflammation)			
Sinus infections, irritation	N	7 - 15	2X
Spinal Curves not straight:			
N pulls; S expands. In morning place S at side of spine where curve			
is more pronounced; 12 hours later apply N to side opposite (side			
that is curved inward:			
	S	40	1X a.m.
	N	40	1X 12 hours later
Sprains and ligaments-----	N	30	1X
	S	30	1X afterward
Teeth and gums (after clean)	N	30 to 40	2X after meal
Sore Throat-----	N	20	2X
Weak throat	S	20	2X
Thyroid swelling	N	15	2X
Tumors	N	30 - 45	2X
Ulcers-----	N	30 - 40	2X
Vertebrae: N to pull & cont.	N	30	2x
naot - then use	S	30	2X
Polarizing acupuncture and			
acupressure points-----	S	5	3X
Check body balance with pendulum			
Polarizing between hands:			
Right hand on N; left hand on S--- 10-----3X			
Check balance with pendulum			
Polarizing feet: S up under right foot;			
N up under left foot-----30 - 120 ----- 2X			
Polarizing to increase body strength: N in vertically over spleen			
on left side of body under armpit and down;			
use S on opposite side of body-----5 ----- 2X			
Post Stroke Regeneration	S	15	3X
Apply over veins and arteries of the body			
Replacing Colonics-----	S	120 to 150	1X
Sit on polarizer S up over towel, etc.			

RESEARCH DATA

I N D E X

- "A" Glands - 3, 5, 19
- Abdominal - 47, 48, 49, 26
- Adenoids - 48, 5
- Ankles - 51
- Arms - 46, 49, 52
- Anatomy - 24
- Adrenal - 5
- Apoplexy - 5
- Artherosclerosis 14, 18
- Audio - 21
- Anemia - 22, 32, 37
- Asthma - 26
- Alkaline colon - 31
- Auxins - 32
- Aluminum - 37
- Algae - 37
- arthritis - 38, 55
- Algae - 37
- Aural - 38
- Adhesions - 47

- Bacteria - 15, 20, 37
- Blood - 4, 5, 33, 47, 54, 55
- Blood pressure - 1
- Bladder - 47
- Bones - 55
- Bipolar - 24
- Body poles - 1
- Bowels - 47
- Brain - 3, 5
- Brachial Plexus - 49, 55
- Burns - 55

- Carcinoma - 5, 38, 55
- Cardiac neurosis - 26
- Catararacts - 56
- Casein - 37
- Cell - 1, 32, 33, 36
- Cervix - 47
- Cervicals - 47
- Catarrh - 37
- Chills - 32, 33
- Capillary - 33
- Chronaxie - 35
- Charge transfer - 12, 13
- Cholecysstitis - 38
- Colonics - 56
- Contraction - 1, 37
- Colon - 2, 5, 54
- Constipation - 2, 37, 55
- Color - 4
- Cramps - 5
- Colds - 37
- Coronary - 14

- Conductivity - 15, 34
- Consumption - 26
- Cow's milk - 37
- Crystalloids - 36
- Colloid - 35
- Cutaneous nerves - 40 to 45
- Central Nervous System - 34

- Degeneration - 2
- Diagnosis - 38
- Duodenum - 26, 38
- Decay - 22
- Discharges - 4
- Diabetes - 18, 26
- Disease - 30

- Ears - 5, 55
- Electrolyte - 1, 20, 54
- Electron Therapy - 12, 23, 55, 56
- Electromagnetic Pulsed Pyramids 1
- Exhaustion - 3
- Expansion - 3
- Electromagnet - 4
- Eyes - 5, 38, 47
- Emotions - 55
- E-Coli - 5, 16, 32
- Endothelium - 14, 38
- Epigastrium - 26
- Epilepsy - 26
- Epistemology - 29
- Enzymes - 32
- Endocrine - 36
- Electrodes - 48

- Faradic - 48
- Fibrositis - 38
- Fever - 5
- Forearm - 49
- Food - 2, 11, 16, 24, 37
- Frequency Instrument - 1, 47, 5
- Feet - 56
- Fungi - 5, 20

- Gall bladder - 38, 47
- Galvanic - 8
- Gall stones - 26
- Gland - 3
- Gout - 26
- Goiter - 26
- Genitalia - 38
- Glaucoma - 56
- Gums - 56

- Heart - 5, 14, 18, 47, 56

Hand - 49
 Head - 50, 56
 Hemorrhoids - 38, 56, 5
 (Strep-Staph-Fungi)
 Hiccough - 47
 Hormones - 32, 34, 36
 Hypogastrium - 26, 38

 Iodine - 4
 Insulin - 18
 Injection - 25
 Inguinal - 26
 Immaturity of food - 31
 Irradiation - 33
 Impulse - 35
 Isochronic - 35
 Intestinal Mucosa - 38, 47
 Indigestion - 55

 Joints - 55
 Junctions - 1

 Kidneys - 5, 26, 47
 Kirlean - 13, 20
 Knee - 26

 Lactic acid bacillus - 32
 Larynx - 5
 Large Intestine - 5
 Leg - 50
 Ligaments - 56
 Liver - 26, 38, 47, 49, 56
 Lumbar - 26
 Lumbago - 26
 Lymph - 5, 18, 38, 54

 Magnets - 9, 10
 Magnetometer - 16
 Mammary gland - 47
 Microvolts - 3
 Micro-ohms - 15
 Migrane Headaches - 21
 Motor Nerve - 33
 Metabolism - 36
 Mortal Oscillatory Rate - 39

 Neck - 26
 Negative Polarity - 1, 2, 24
 Neuritis - 26, 38, 56
 Neural currents - 34
 Neuron - 35
 Nerves - 9, 28
 North Pole - 14

 Organ - 3
 Os pubis - 26
 Os sacrum - 26

Ovaries - 5, 26, 49
 Oxidation - 24

 Paniculiculitis - 38
 Parotid - 26
 Pain - 55
 Pancreas - 5
 Paralysis - 5, 26
 Pendulum - 54
 Pelvic Girdle - 38
 Parasympathetic Nerve - 38
 Pleurisy - 26
 Peptones - 36
 Plaque - 14, 18
 Pineal - 5
 Pneumonia - 5
 Polarity Junctions - 1
 Polarity Poles - 1, 10, 15
 Polarizers - 1, 16, 18
 Polarity - 1, 19, 21, 24
 Pollution - 4
 Prostate - 18, 47, 56, 5
 Positive Polarity - 24, 25
 Proteins - 36
 Proteoses - 36
 Prostatitis - 38
 Pylorus - 38
 Pyramids - 9
 Pulse - 5

 Radiation - 18, 20, 22
 Radar - 22
 Radionics - 20, 22
 Rife Ray Tube - 1
 Research - 6, 7, 8
 Reflexes - 21
 Reduction - 24
 Rheumatism - 26
 Resistance - 15

 Sarcoma - 5
 Sinus - 56
 Sinusoidal - 48
 Sacrum - 38, 49
 Sebaceous - 33
 Sex - 56
 Skin - 27, 33
 Sinning - 32
 Silica - 22
 Sciatica - 26
 Small Intestine - 5
 Spinal Cord - 3
 Sprains - 56
 Solar Plexus - 1
 Spores - 32
 Spleen - 5, 47

Splanchnic - 48
 Spasms - 9, 21, 24
 Spine - 21, 26, 56
 South Pole - 14
 Sodium-potassium - 32
 Smegmatous - 33
 Strength - 4, 17
 Stomach - 5, 47
 Streptococcus - 5, 32
 Stroke - 5, 56
 Staphylococcus - 5
 Streptothrix - 5
 Stenosis - 38
 Suderiferous - 33
 Stimuli - 21
 Sunstroke - 5, 56
 Sympathetic - 12, 47
 Sugar - 18

 Tension - 1, 2
 Testes - 5
 Teeth - 56
 Tox albumen - 30
 Thoracic - 48
 Therapy 3, 6
 Thyroids - 5, 26, 26
 Tonsils - 5
 Thyphoid - 5, 37
 Throat - 26, 5, 56
 (Strep, Staph, Fungi)
 Tuberculosis - 5, 26, 37
 Tumors - 26, 56

 Ulcer - 38, 56
 Ureters - 47
 Uterous - 47

 Varicose Veins - 4
 Vertebrae - 56
 Viruses - 15, 19, 29, 39, 5
 Vitamins - 37

 Worms - 5, 20

 X-rays - 22

P E R S O N S

R.E. Seidel, M.D.	6
Dorland's Dictionary	6
Arthur Yale, M.D.	7
James B. Couche, M.D.	7
R.T. Haimer, M.D.	7
Arthur I. Kendall, Ph.D.	7
E.C. Rosenow, M.D.	7
Milbank Johnson, M.D.	7
Charles F. Tully, D.D.S.	7
Royal R. Rife	7, 39
John F. Crane	7, 9, 10
Thomas Colson	7
Hugo Fricke	8
Mathews	8
Crile, M.D.	8
Prof. Nuttkowski	9
J. Weiss	12
Dr. Robert A. Milliken	12
Dr. Eric A. Jaffe	14, 18
Dr. Harvey Molinsky	14, 18
B.W. Gonin, M.D.	25, 39
Dr. T.H. Bowman	34
L. Lapique	35
Graham	35
Dr. James Purcell	37
Dr. Albert Abrams, M.D.	39
Dr. Mather Thompson	39
Dr. Guyon Richards	39
A.E. Baines	39
Howard Parsons	39